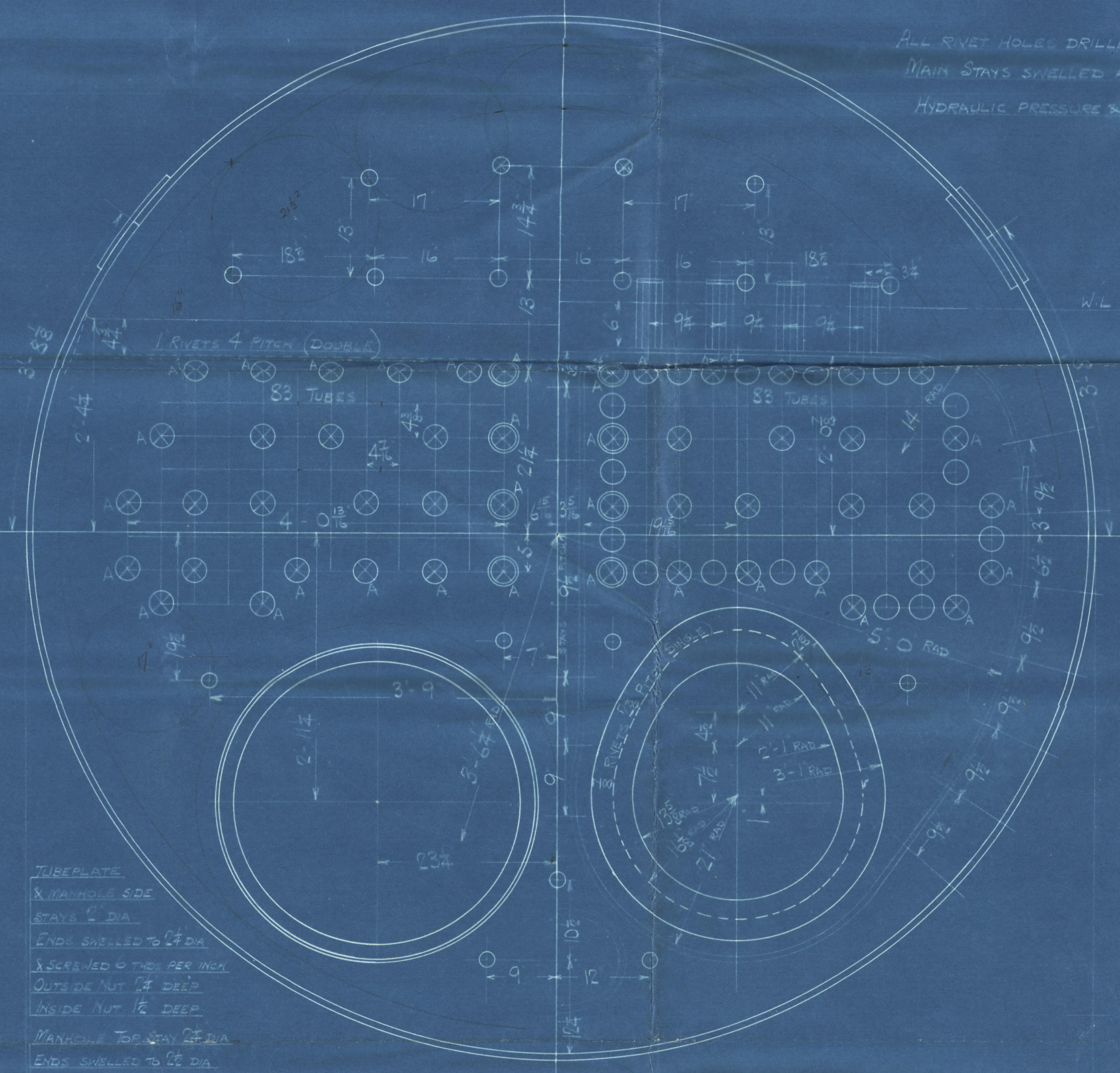
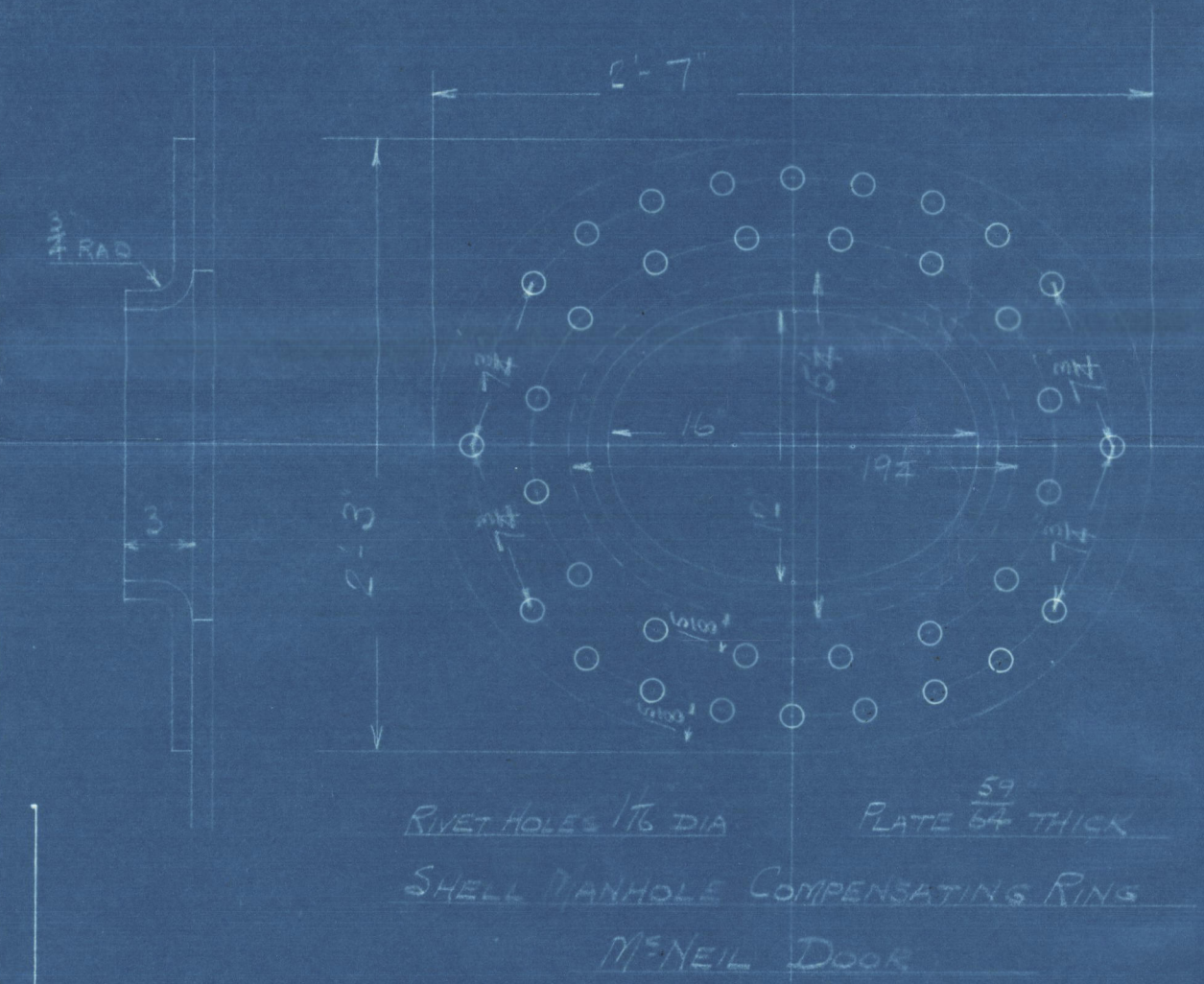
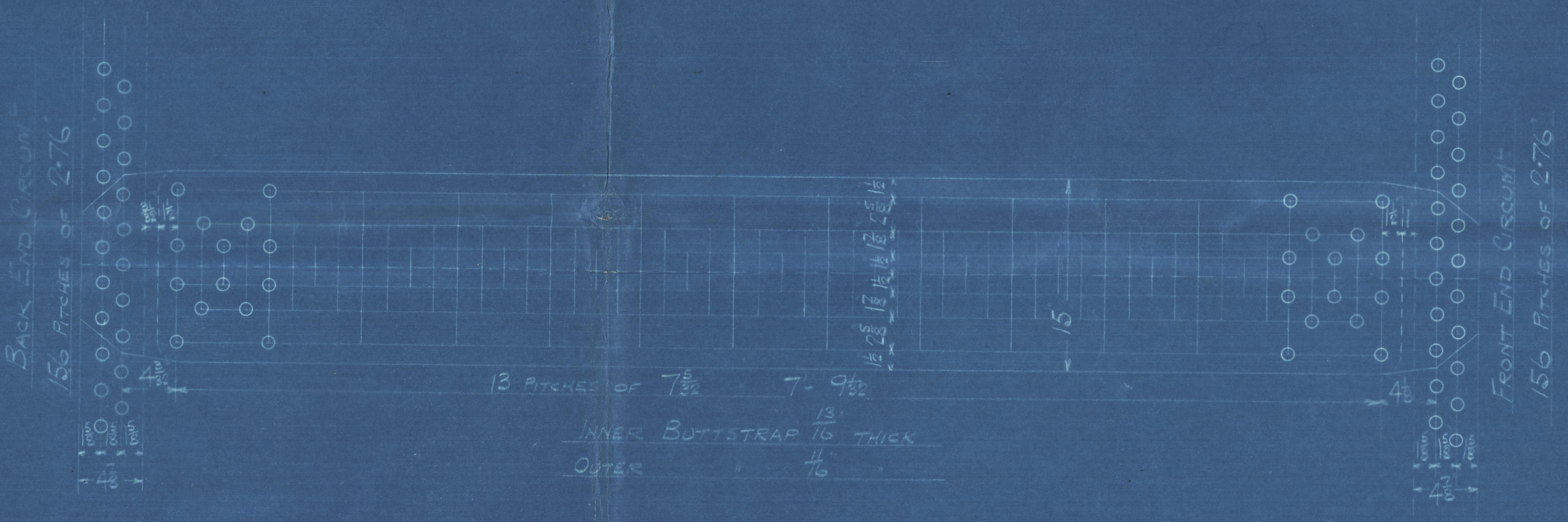


11.12.28
11.12.28

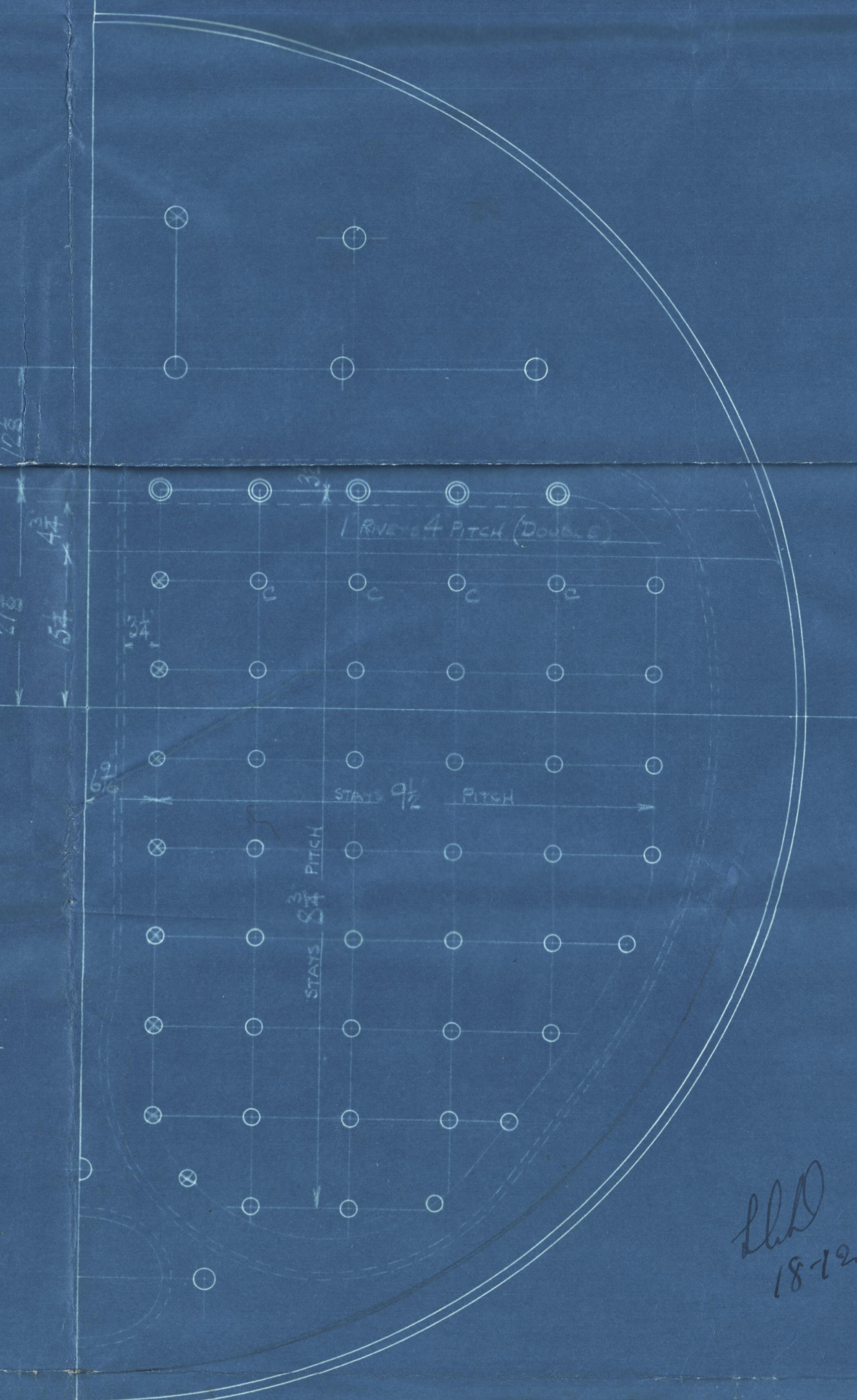
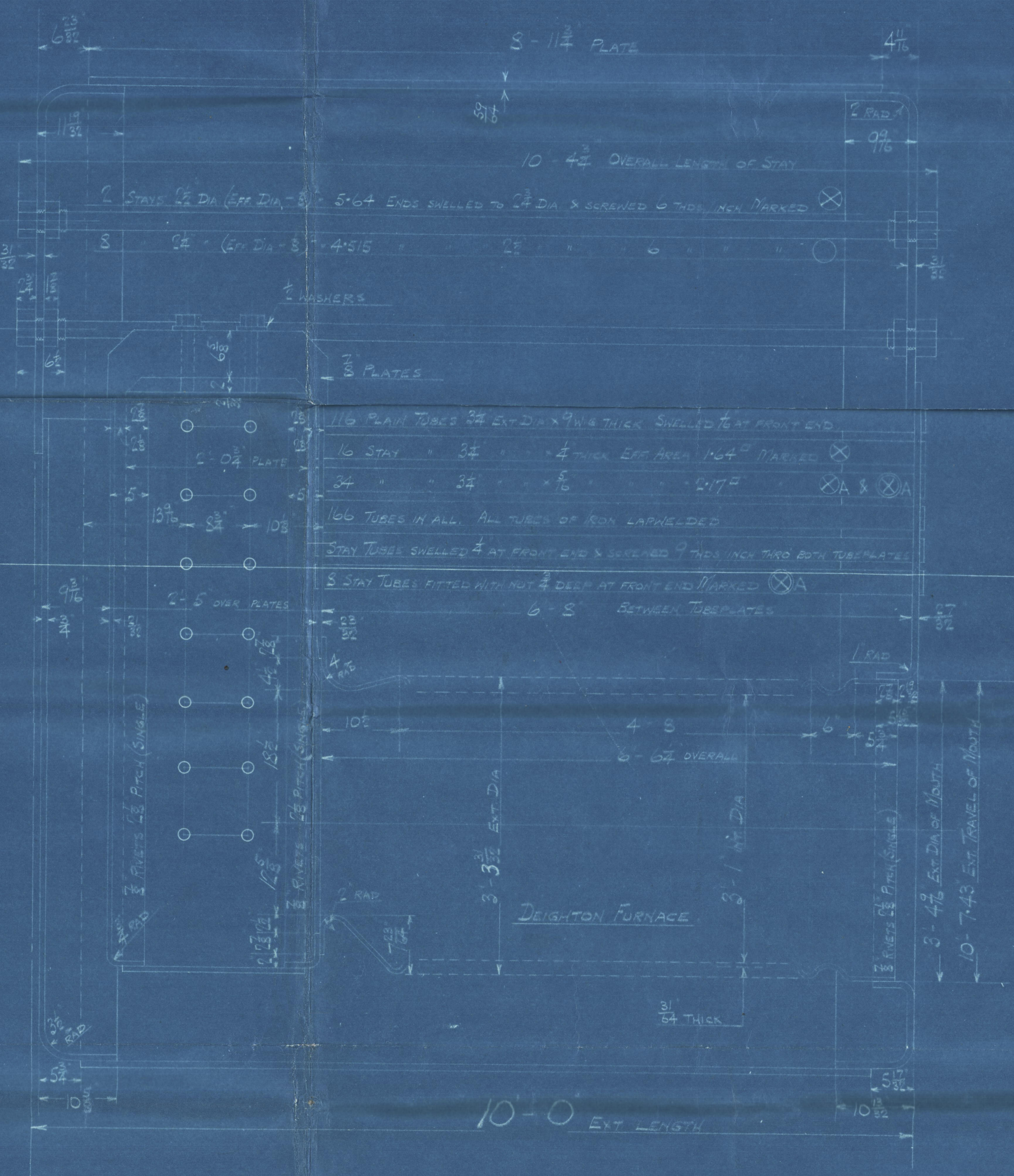
SURFACES		ONE BOILER
TUBES		938
FRONT TOP AND SIDES		67
BACK		46
TUBESHEET		31
TURNACES		76
TOTAL HEATING SURFACE		1158
GRATE AREA (5" BARS)		34
TUBE AREA		74
WATER AREA		93
STEAM SPACE		212
GRATE AREA : HEATING SURFACE		: 24
: TUBE		: 27.6
: AREA		: 4.6
: WATER		: 2.33
: STEAM SPACE		: 6.23
% BOILER ABOVE FIREBOX		13.3
HEIGHT OF WATER		13 TONS

RIVETING		
	LONG	END
RIVET HOLE DIA	7/8	1 1/8
PITCH	7/8	2 1/2
% PLATE	58.02	51.5
% RIVET	58.5	55.4
% COMBINED	59.7	

LIMITS OF TENSILE STRENGTH & MATERIAL		
SHIELD BUTT WELD	20 TO 25 TONS	
GROUDED	23 TO 25	
OTHER PLATES	26 TO 30	
TURNACES	26 TO 30	
MAIN STAYS	23 TO 30	
SCREENED STAYS	26 TO 30	
RIVET BARS	26 TO 30	

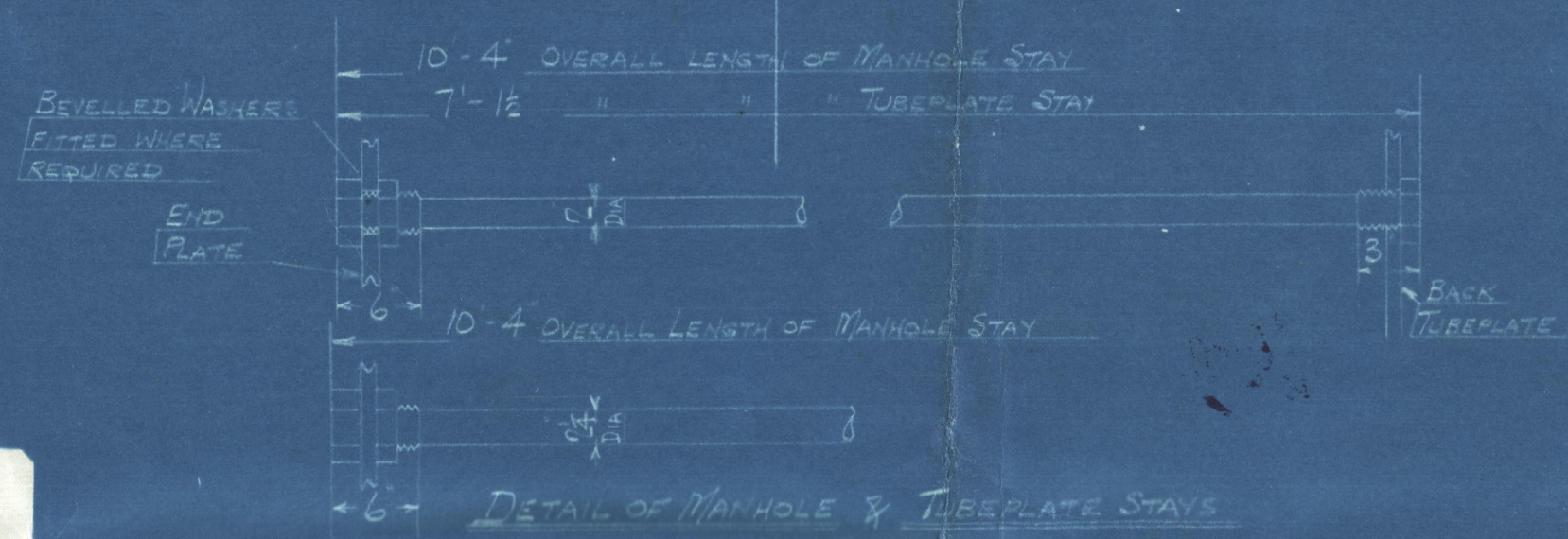


ALL RIVET HOLES DRILLED IN PLACE
MAIN STAYS SHIELDED AT ENDS BY
HYDRAULIC PRESSURE & ANNEALED



TUBESHEET
MANHOLE SIDE
STAYS 1/2 DIA
ENDS SHIELDED TO 1/2 DIA
SCREENED TO 1/2 DIA PER INCH
OUTSIDE NOT 1/4 DEEP
INSIDE NOT 1/2 DEEP
MANHOLE TOP STAY 1/2 DIA
ENDS SHIELDED TO 1/2 DIA
SCREENED TO 1/2 DIA PER INCH
OUTSIDE NOT 1/4 DEEP
INSIDE NOT 1/2 DEEP

11-6 EXT. DIA. ONE 16" DIA. MANHOLE AT BACK



AUXILIARY BOILER
ONE OFF FOR EACH CONTRACT NO.
CONT'S NOS 901-902-903-904-905
WORKING PRESSURE 180 LBS PER SQUARE INCH
TEST 220
5 PASS LLOYD'S SURVEY
SCALE 1/8" = 1 FOOT

POSITION	MARK	DIA	1/4" (25)	1/2" (25)
BACK TOP & SIDES	1	1/8	1.84	0
" WIDE SPACE	2	1/8	2.19	0
" TOP ROW	3	1/8	2.55	0
" CORNER	4	1/8	3.00	0

ALL FIREBOX STAYS SCREENED THRU BOTH PLATES AND NOT FITTED AT EACH END EXCEPT STAYS DRILLED IN BACK BOTTOM END WHEN PROJECT 3" AND ARE CHAMFERED
ALL STAYS NOT 1/2 DEEP EXCEPT ON 1/4 SIDE TOPS WHERE THE OUTSIDE NUTS ARE 1/4 DEEP
ALL 1/2" NUTS 1 DEEP

O.T. 34/34



GLASGOW

DAVID ROWAN & Co. Ld

AUXILIARY BOILER N^o 901

W.P. - 180 LBS

LITHGOWS LTD S/S N^o 821

N^o 1834'S

LLOYD'S TEST

320 LBS.

W.P. - 180 LBS

L.C.D.

18-6-29

"Cape
Corso"

es. Knight of St George

GLASGOW REPORT N^o 49122

Gnk. 19086.



© 2020

Lloyd's Register
Foundation

WIS - 0053