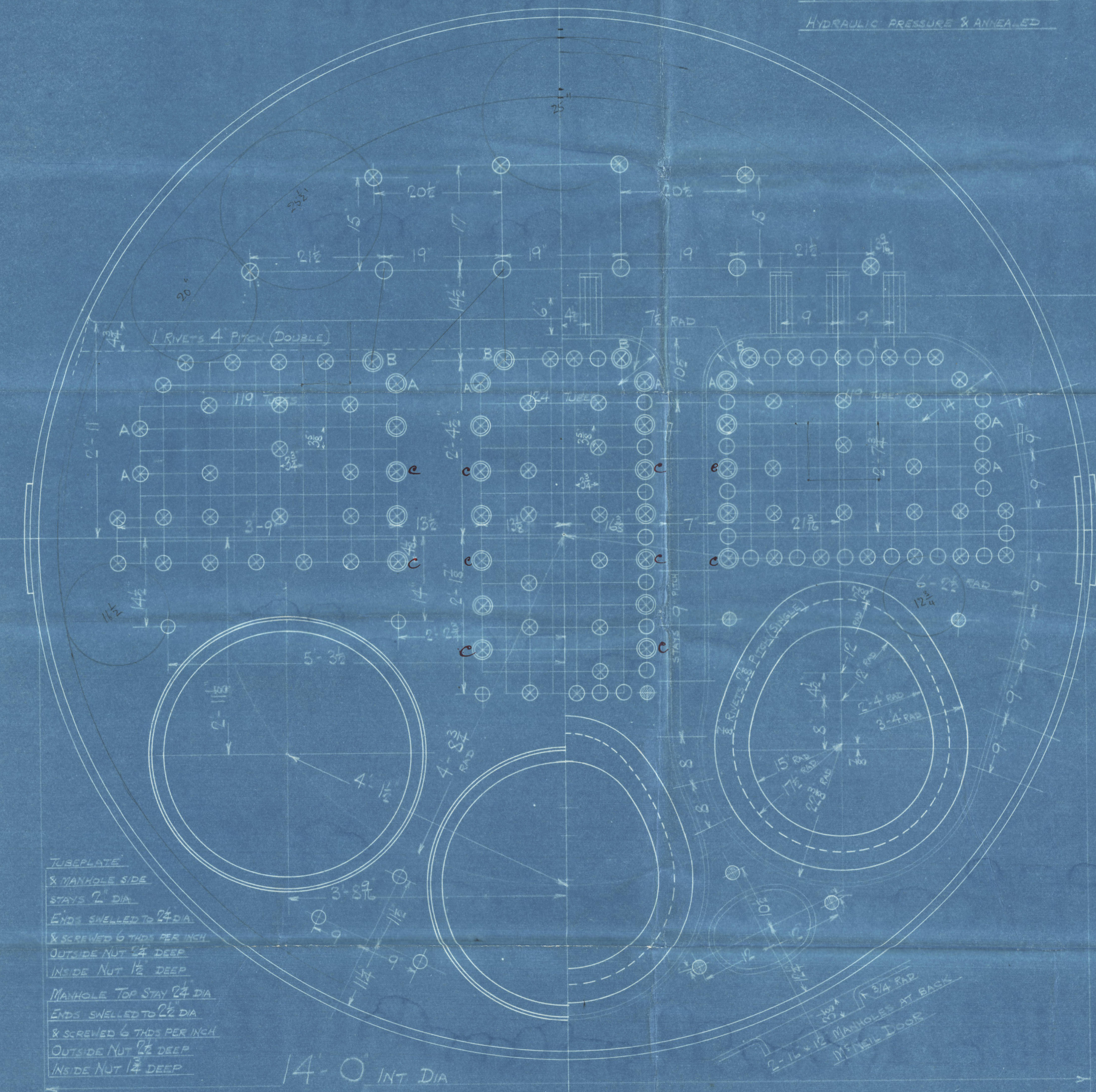


18/2/28

SURFACES	ONE BOILER	TWO BOILERS
TUBES	1820 #	3640 #
FIREBOX TOP AND SIDE	129	258
" BACK	68	136
TUBESHEET	47	94
TURBINES	14	28
TOTAL HEATING SURFACE	2215 #	4430 #
GRATE AREA (5" x 6" BARS)	54'6"	109'2"
TUBE AREA	888	1776
WATER AREA	140	280
STEAM SPACE	375 #	750 #
HEATING SURFACE	140	280
TUBE	140	280
AREA	6'14"	12'28"
WATER	140	280
STEAM SPACE	140	280
% BOILER ABOVE FIREBOX	30.7	
WEIGHT OF WATER	22 TONS	44 TONS

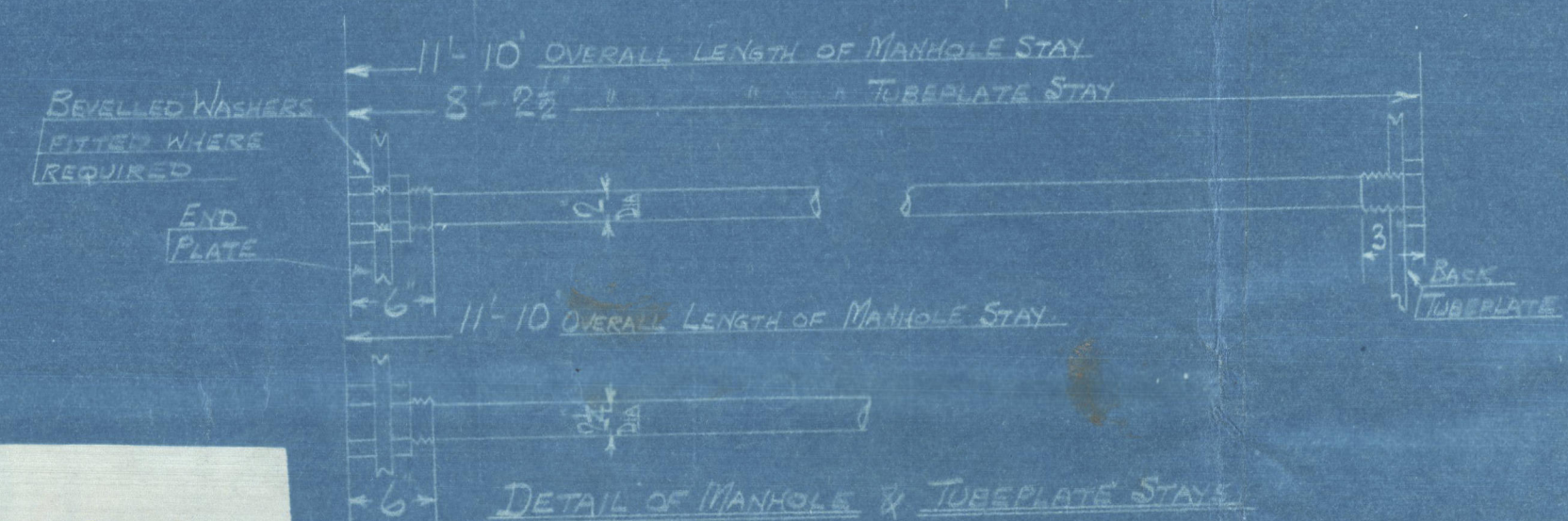
RIVETING	
LONG	END
RIVET HOLE DIA	1 1/8
PITCH	3 1/2
% PLATE	85.8
% RIVET	84.6
% COMBINED	84.7

LIMITS OF TENSILE STRENGTH & MATERIAL	
SHELL & BUTTSTRAPS	20 TO 23 TONS
GIRDERS	28 TO 32
OTHER PLATES	26 TO 30
END PLATES	26 TO 30
MAIN STAYS	28 TO 32
SCREWED STAYS	26 TO 30
RIVET BARS	26 TO 30

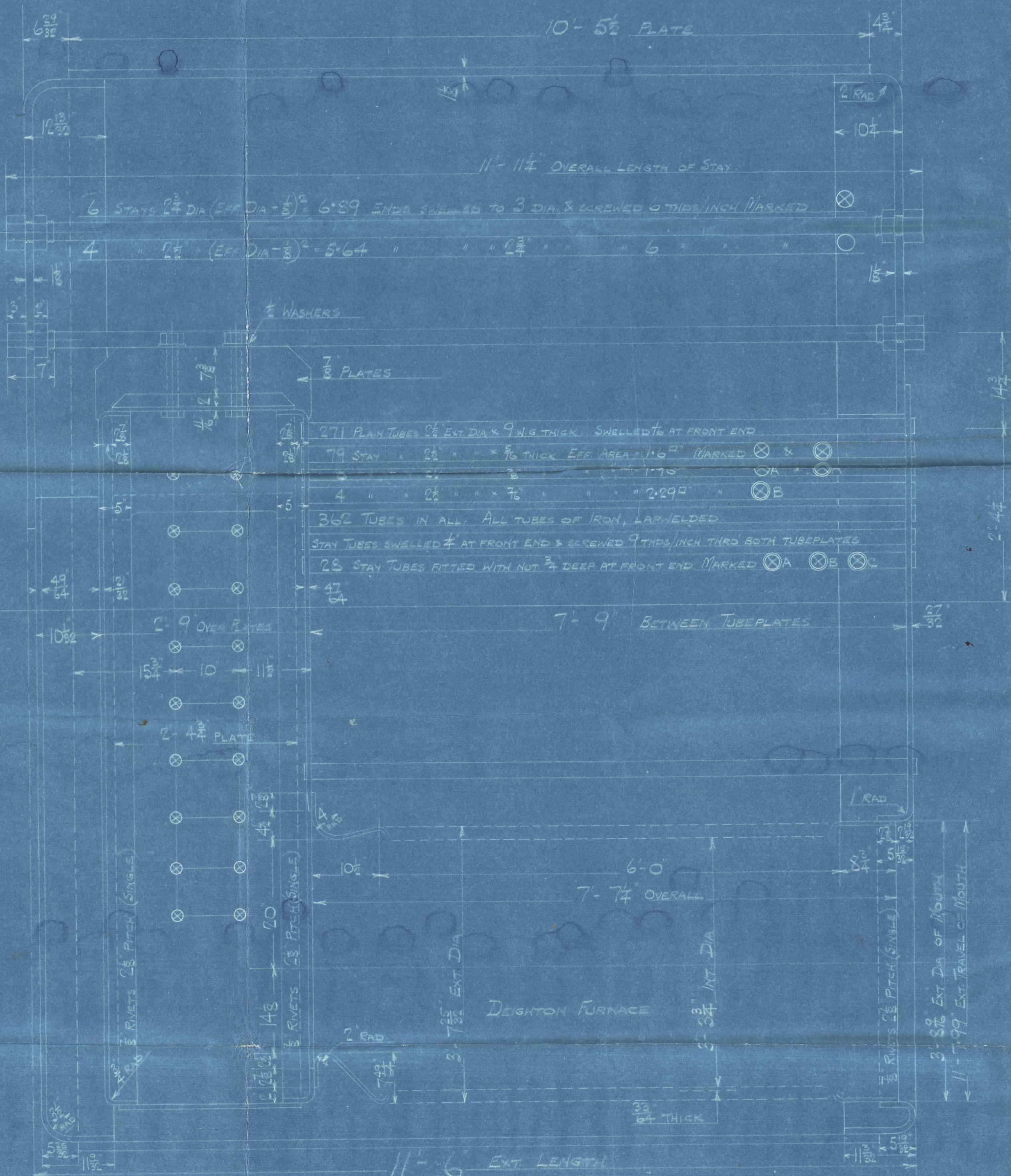
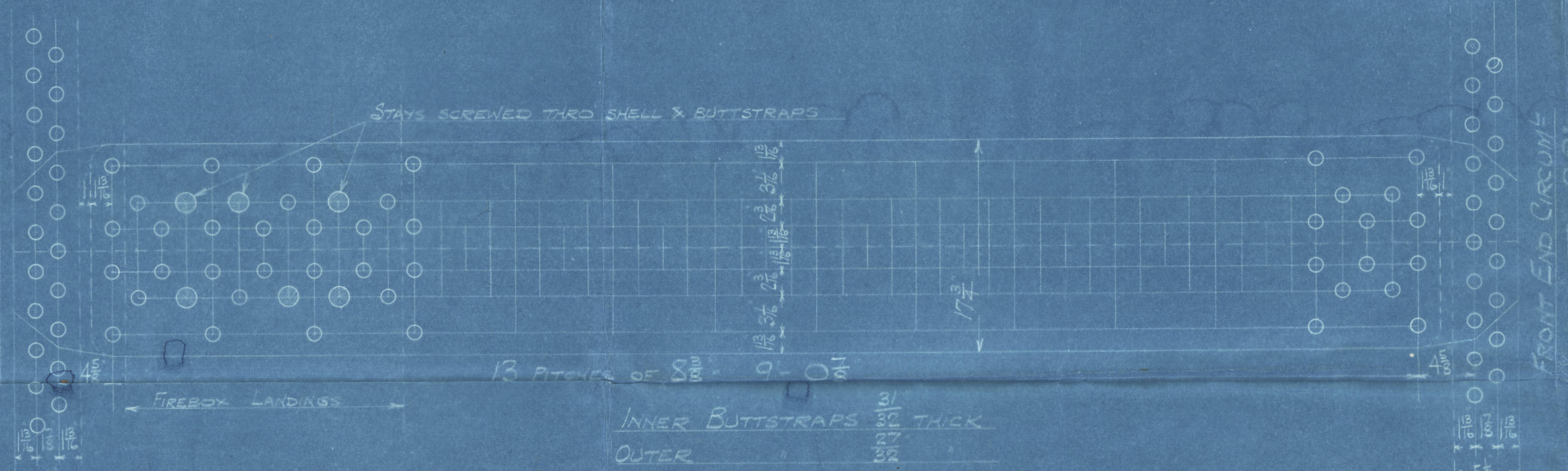


TUBESHEET  
& MANHOLE SIDE  
STAYS 2" DIA.  
ENDS SHELLED TO 2 1/2" DIA.  
& SCREWED 6 THDS PER INCH  
OUTSIDE NUT 1/4" DEEP  
INSIDE NUT 1/2" DEEP  
MANHOLE TOP STAY 2 1/2" DIA.  
ENDS SHELLED TO 2 1/2" DIA.  
& SCREWED 6 THDS PER INCH  
OUTSIDE NUT 1/4" DEEP  
INSIDE NUT 1/2" DEEP

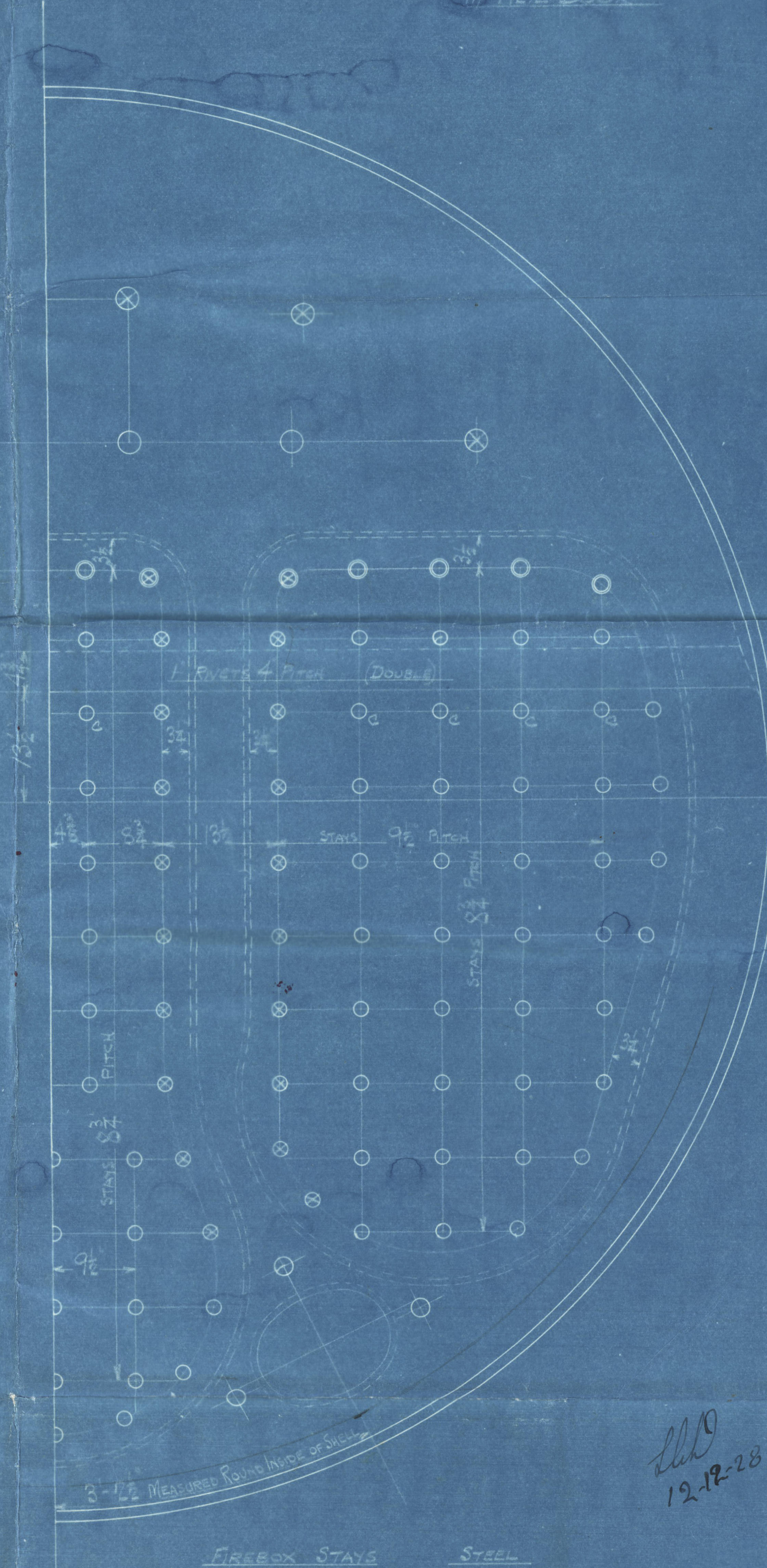
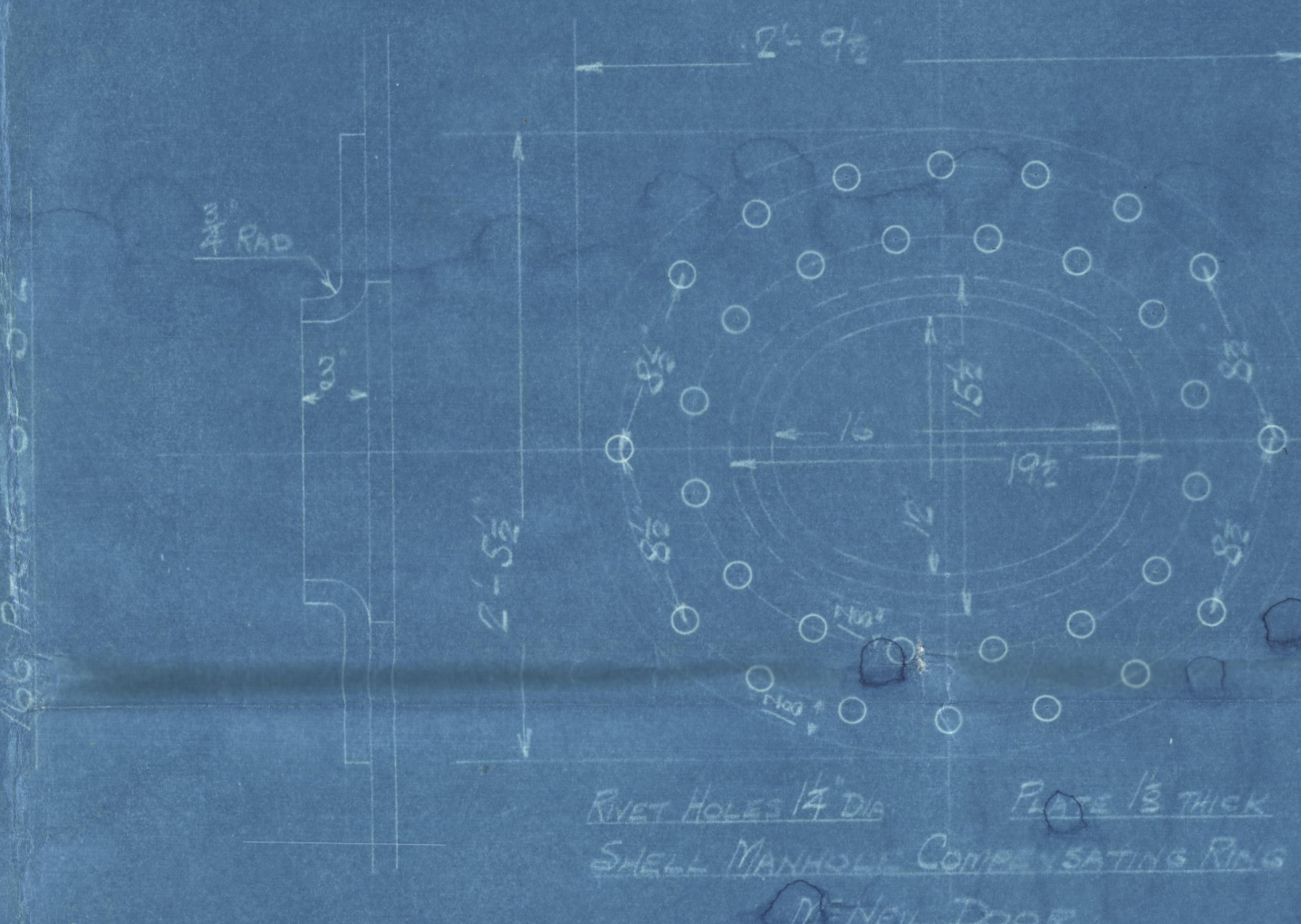
14'-0" INT. DIA



BACK END CURVE  
166 PITCHES OF 3" x 2"



MAIN BOILER  
2 OFF EACH CONT NO  
CONT'S N<sup>OS</sup> 901-  
WORKING PRESSURE 180 LBS PER SQ. INCH  
TEST 320  
TO PASS LLOYD'S SURVEY  
SCALE: 1/8" = 1' & 1/2" = 1' ONE FOOT



FIREBOX STAYS		STEEL	
POSITION	MARK	DIA	(DIA-2ST) THDS/INCH
BACK	0	1 1/8	1844
TOP SIDES & BACK WIDE SPACE	0	1 1/8	2199
BACK TOP ROW	0	1 1/8	2555
" " CORNER	0	2	31003

ALL FIREBOX STAYS SCREWED THRU BOTH PLATES AND NOT FITTED AT EACH END EXCEPT STAYS FROM WING FIREBOX TO SHELL AND STAYS MARKED C IN BACK BOTTOM END WHICH PROTECTS AND ARE CAULKED ALL 1/8" x 1/2" NUTS & DEEP EXCEPT ON GIBBER TOPS WHERE THE OUTSIDE NUTS ARE 1/2" DEEP

07.34068.A





GLASGOW

DAVID ROWAN & CO. LTD  
MAIN

(2) BOILERS N<sup>o</sup> 901

WP-180 LBS

LITHGOWS LTD 3/5 N<sup>o</sup> 824

"Cape Corso."

Gnk Repl<sup>y</sup>

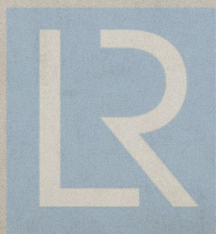
No. 19086

N<sup>o</sup> 18344  
LLOYD'S TEST  
320 LBS  
WP-180 LBS  
L.E.D.  
18-6-29

-X

Knight of St. George

GLASGOW REPORT No 49522



© 2020

Lloyd's Register  
Foundation

WIS-0052