

PROFILE & DECKS

Nos 827-8-9

SCALE 1/8" = ONE FOOT.

TO CLASS 100A1 AT LLOYD'S SPECIAL SURVEY

DIMENSIONS

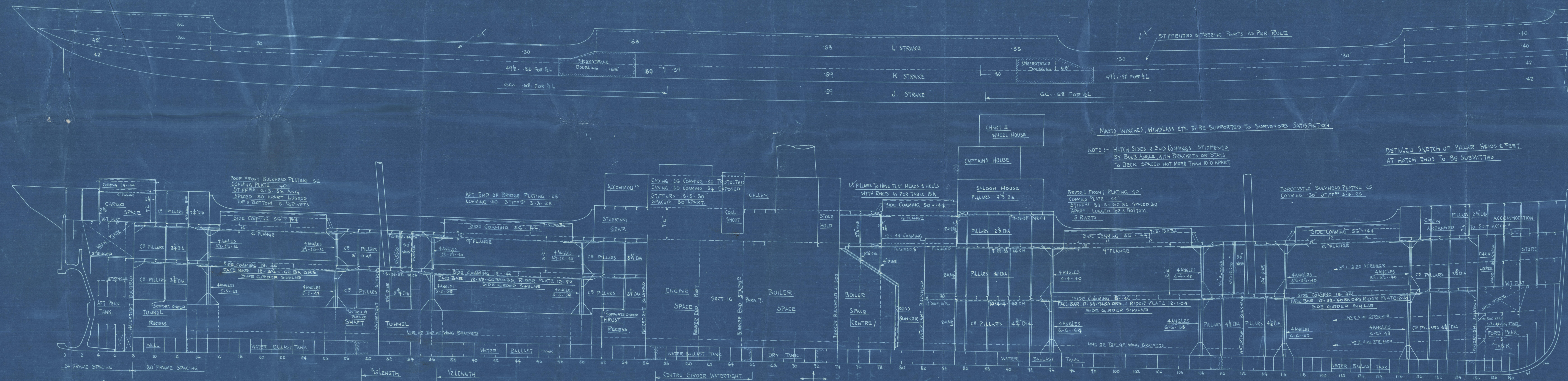
851'4" ON LOAD LINE

352'6" B.P. 50'6" EXTREME 50'3" MOULDED 127'3" TO UPPER DECK.

THE SCANTLINGS & DETAILS OF CONSTRUCTION NOTED HEREON ARE SUBMITTED ON THE UNDERSTANDING THAT THEY ARE THE MINIMUM WHICH WILL BE ACCEPTED FOR CLASS AND IF NOT THEY ARE TO BE AMENDED. ERRORS & OMISSIONS EXCEPTED.

PLANS OF HATCHES, BULKHEADS, TUNNEL AND BOTTOM STRENGTHENING FORWARD WILL BE SUBMITTED LATER.

SHEER FORWARD = 78
SHEER LENGTH FORWARD = 42.9
SHEER AFT = 39
SHEER LENGTH AFT = 21.45
DISPLACEMENT COEFF = .77
ROUND OF BEAM = 13

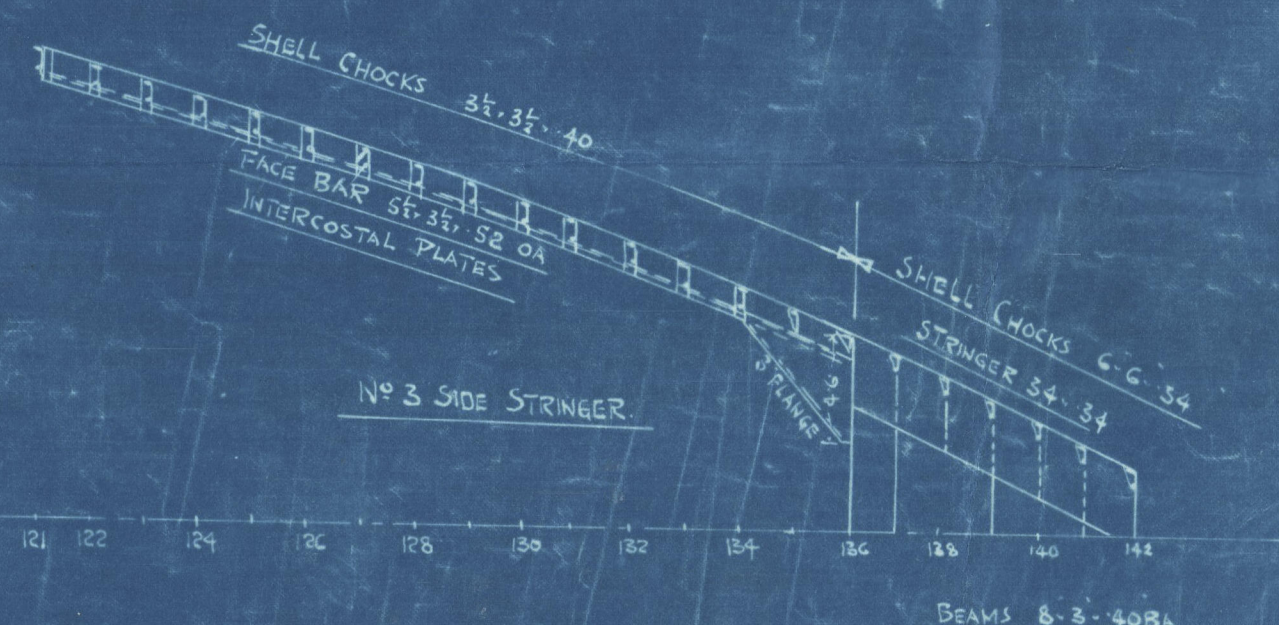
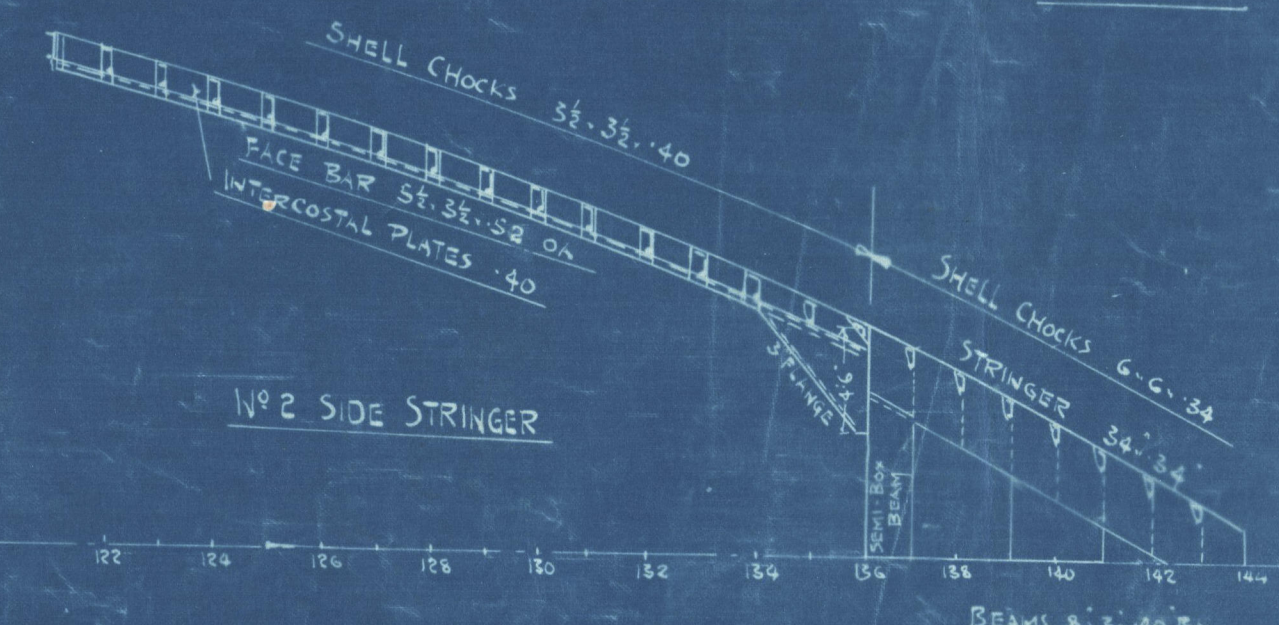
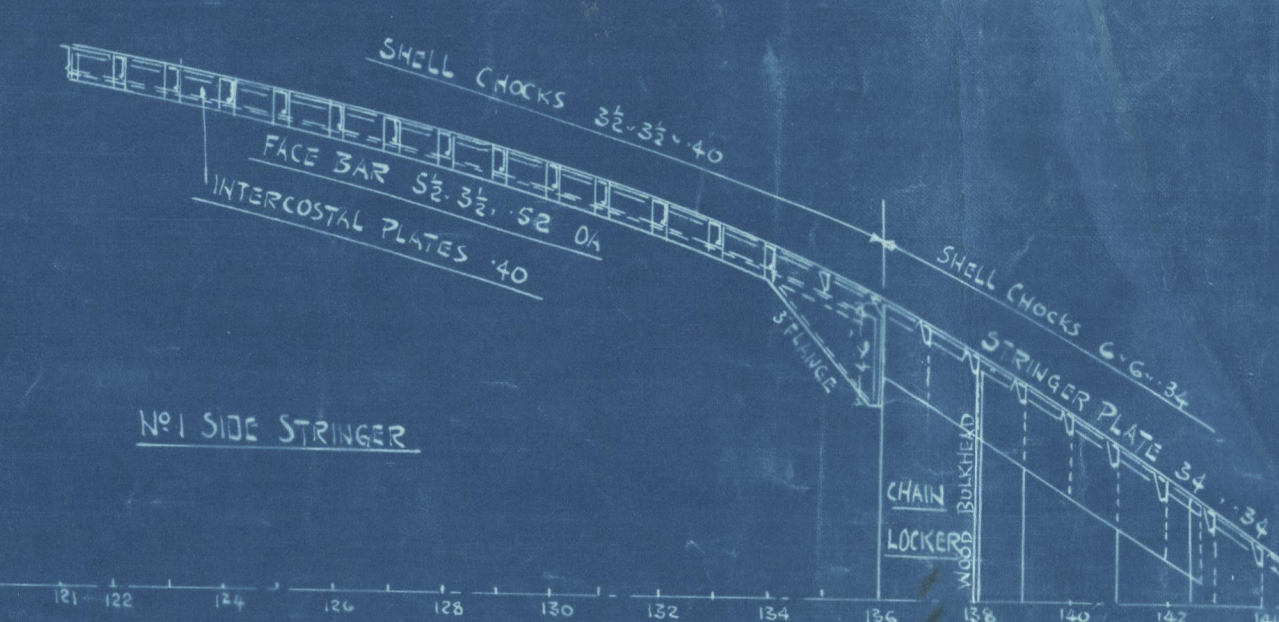
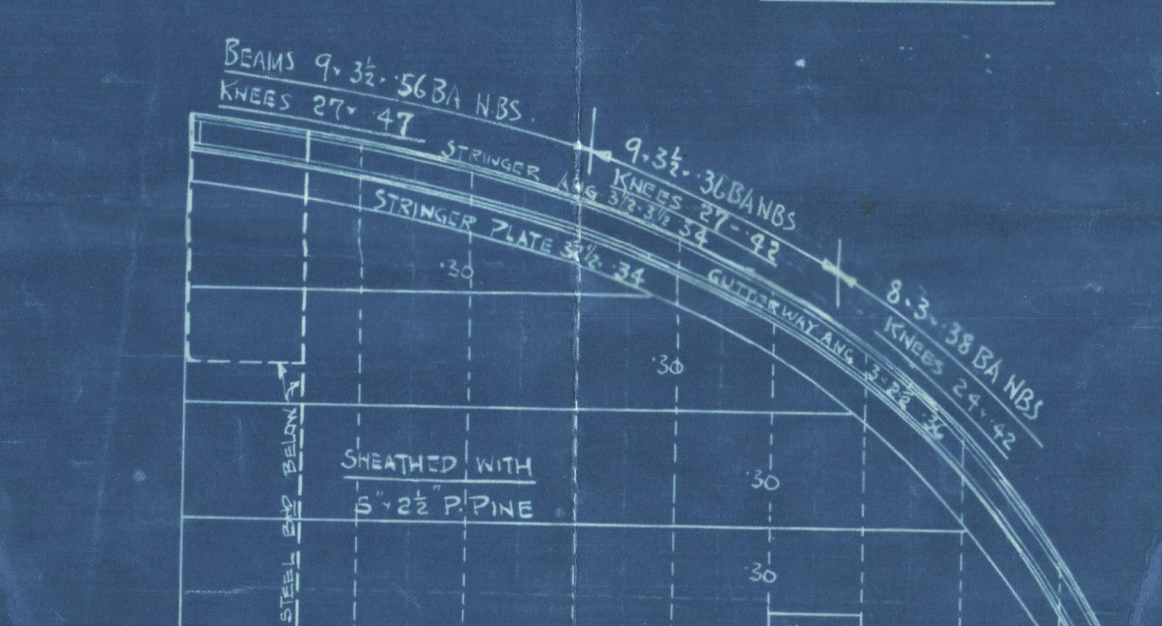
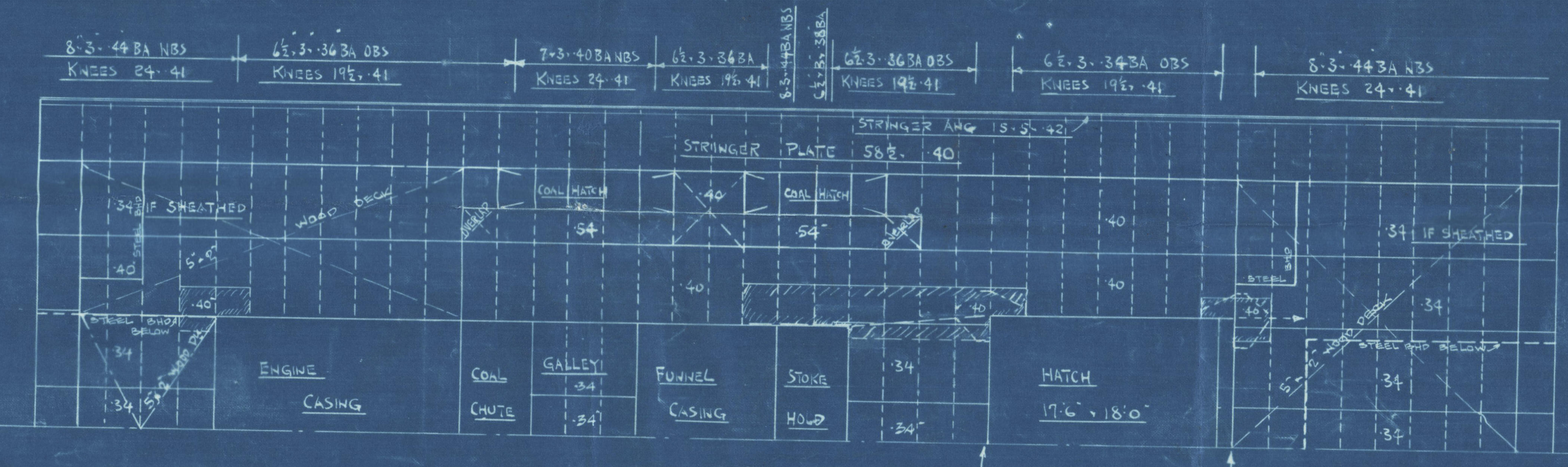
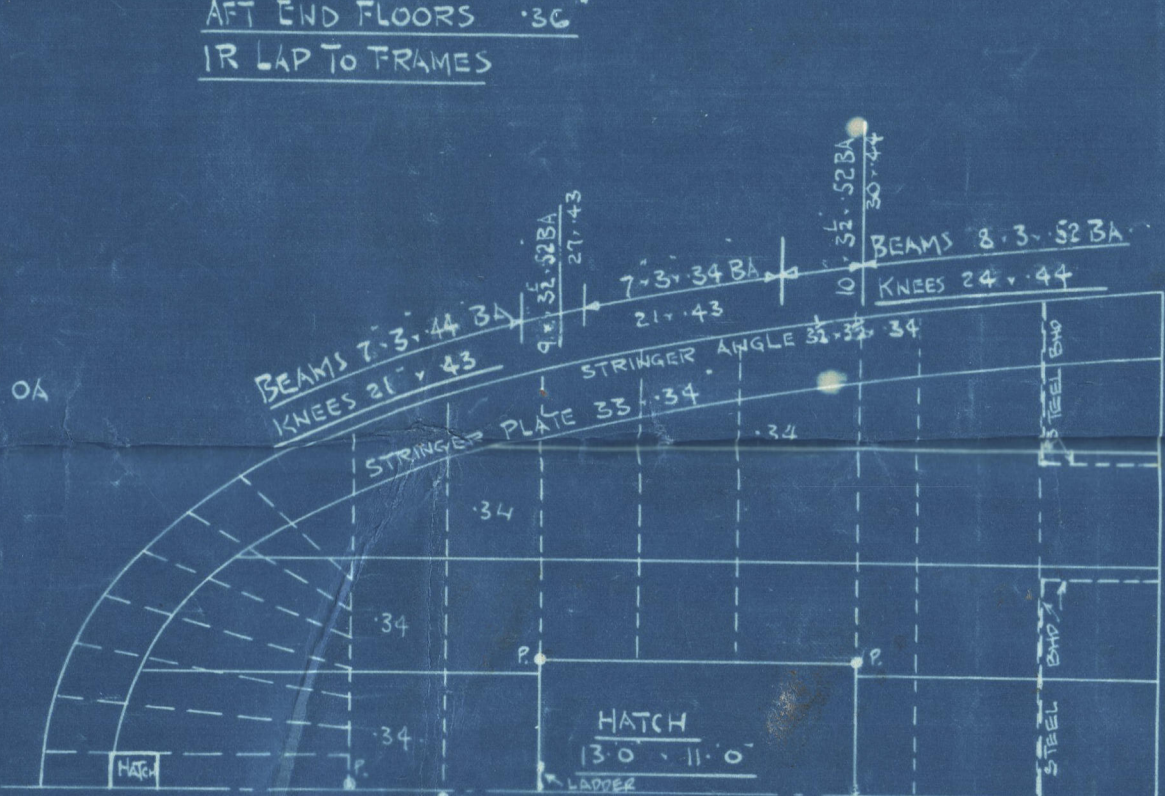


MASTS, WINCHES, WINDLASSES ETC. TO BE SUPPORTED TO SURVIVORS SATISFACTION.

NOTE: HATCH SIDES & END COMINGS STIFFENED BY BULB ANGLE WITH BRACKETS OR STAYS TO DECK SPACED NOT MORE THAN 10'0" APART.

DETAILED SKETCH OF PILLAR HEADS & FEET AT HATCH ENDS TO BE SUBMITTED.

FRAMES AT STRONG HATCH END BEAMS TO BE REINFORCED BY REVERSE BARS.



LITHGOWS LTD

Nº 827. "Cape Corso"
EX

"KNIGHT OF ST GEORGE"

PROFILE & DECKS (AS BUILT).

827

Greenock Report Nº 19086.



© 2020

Lloyd's Register
Foundation