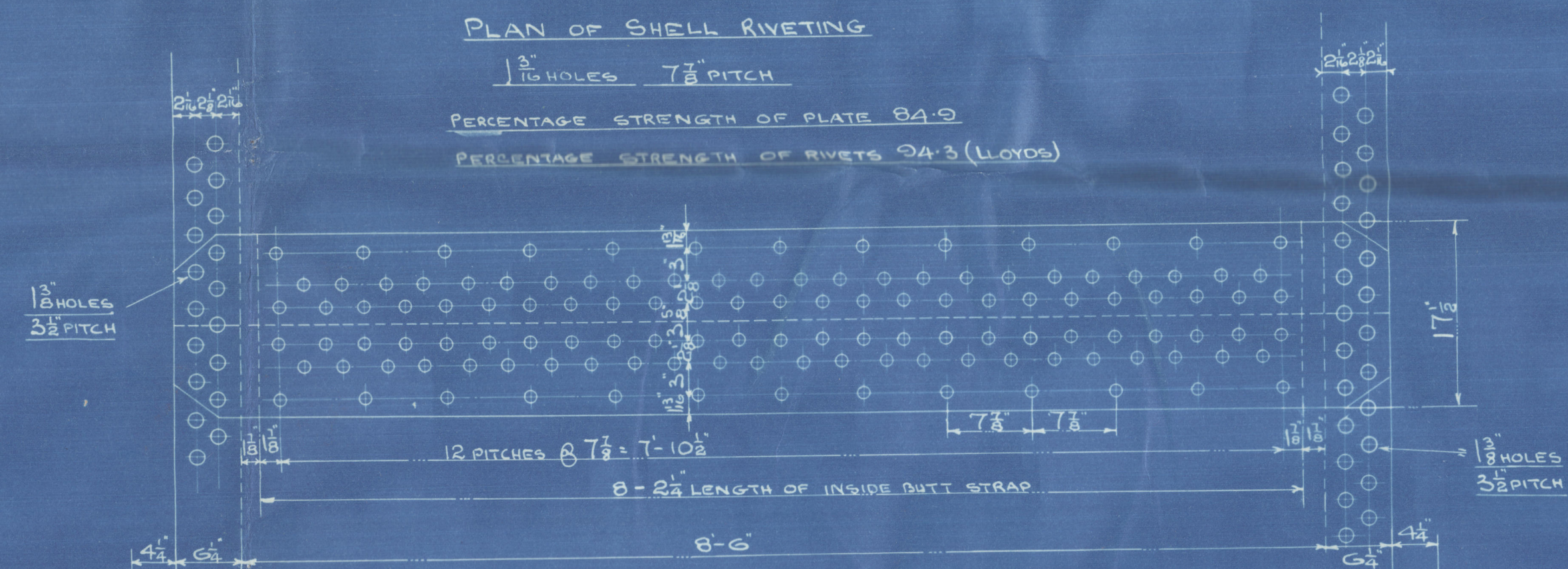
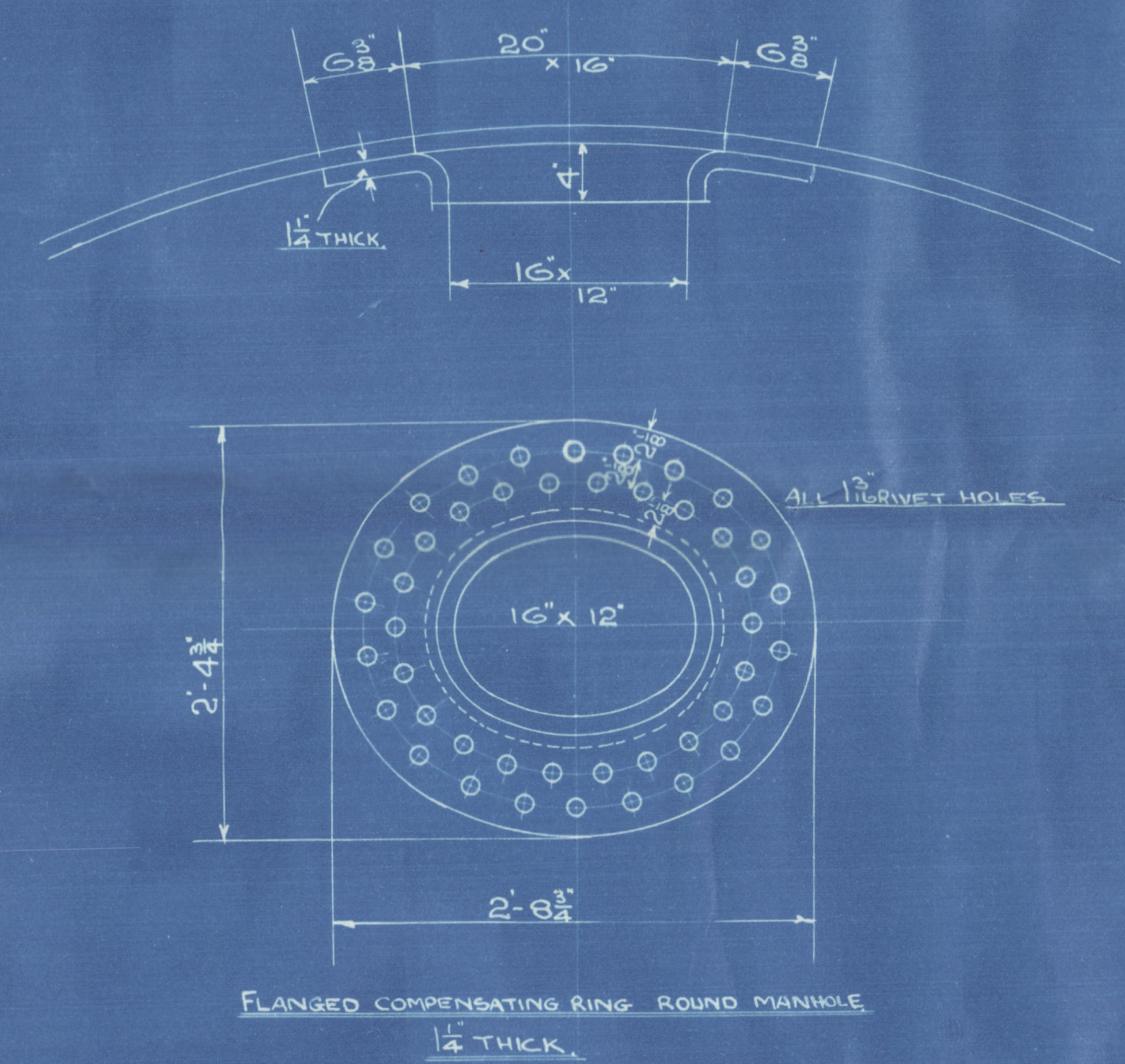


10/12/08

2 STEEL BOILERS. N^o 558

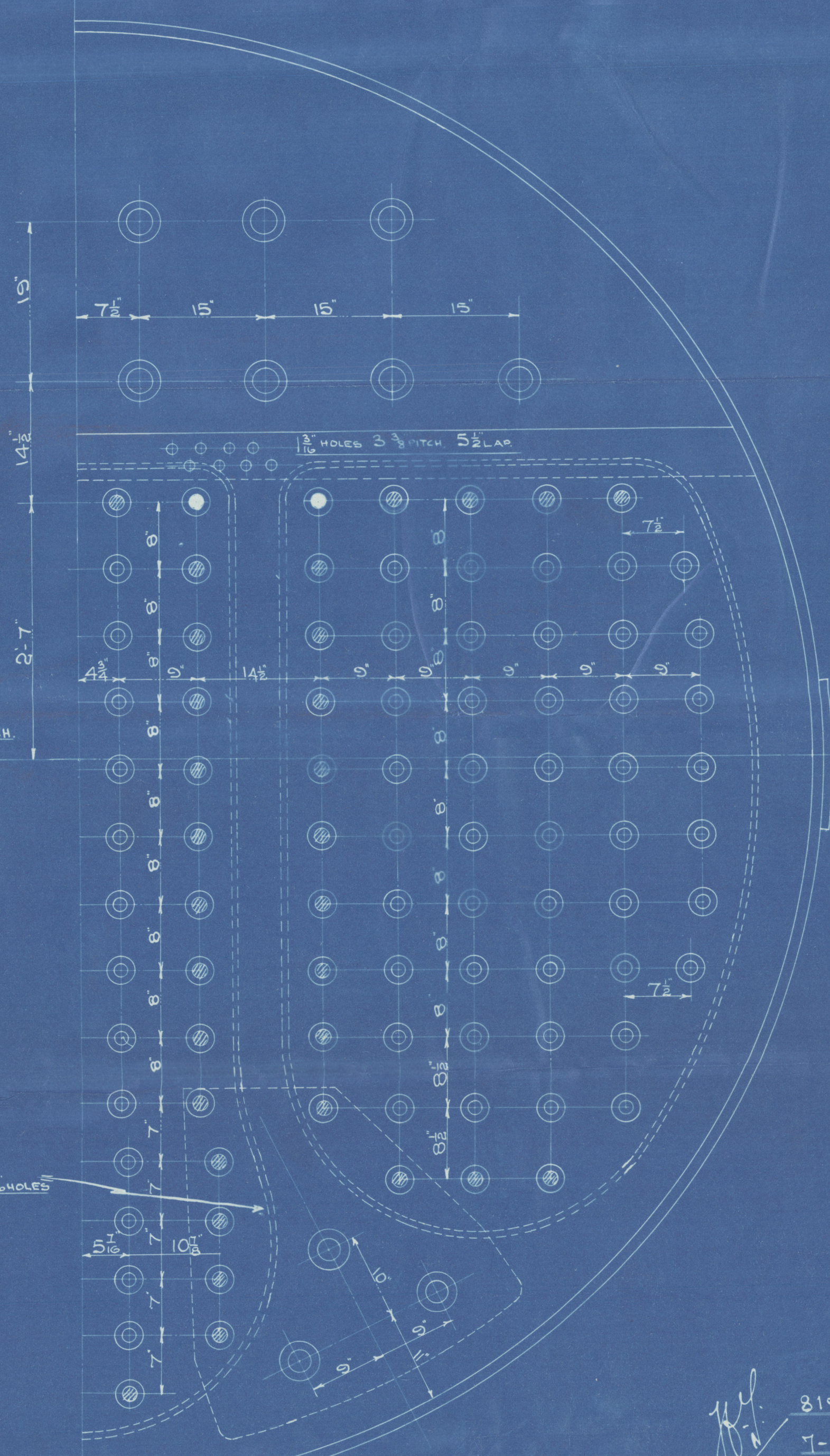
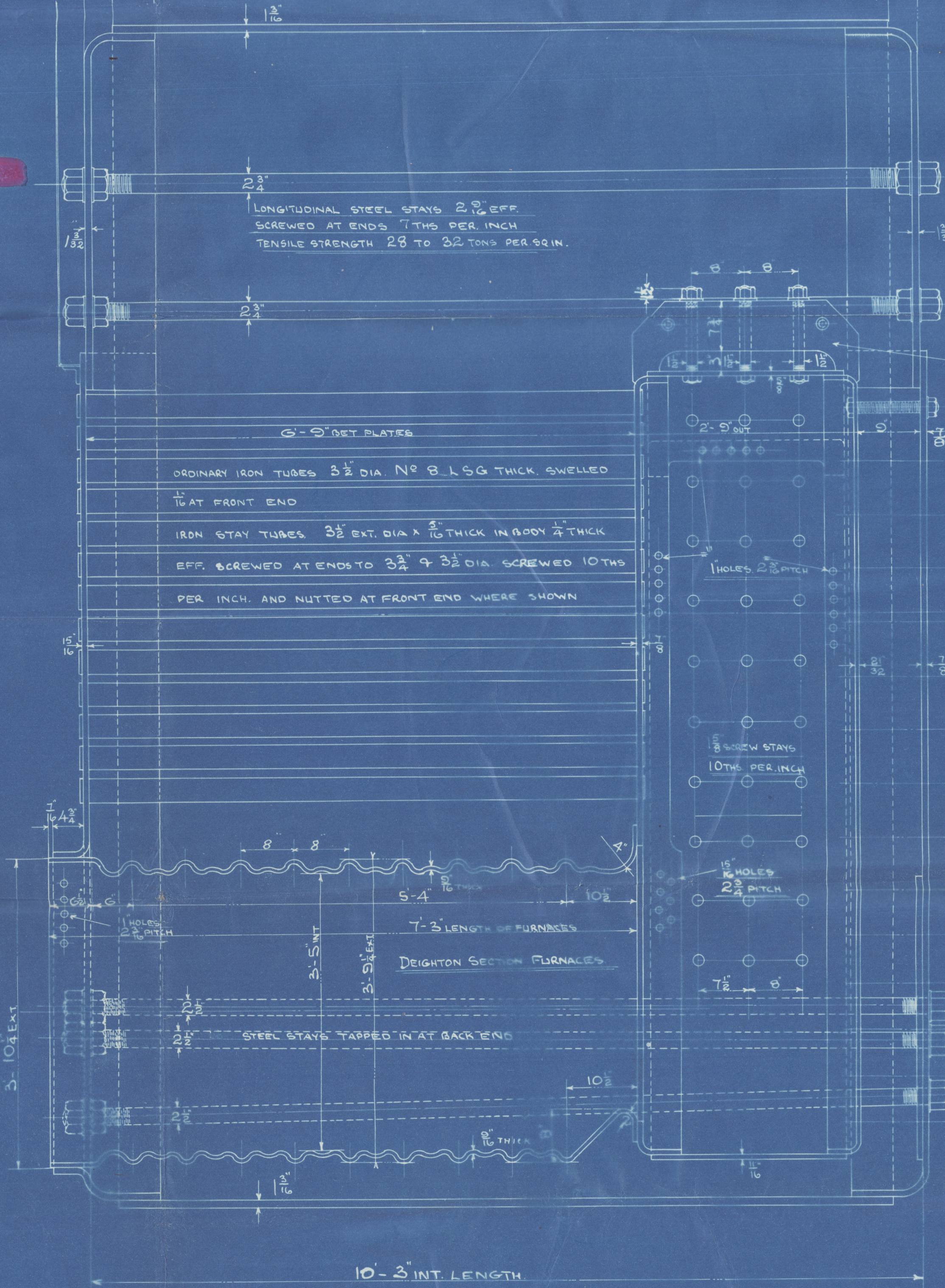
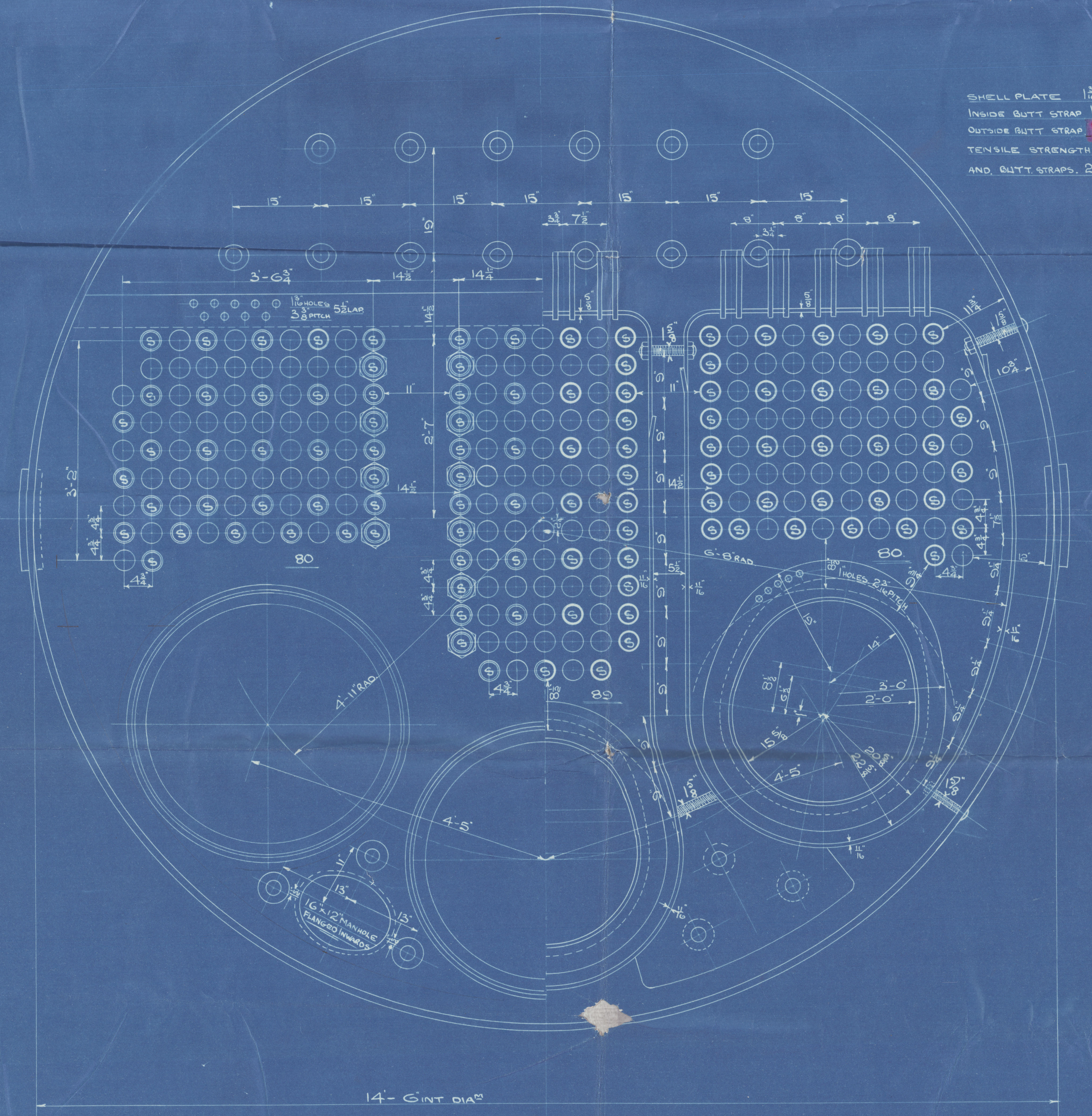
WORKING PRESSURE 180 LBS. PER SQ. INCH. LLOYD
TEST PRESSURE 360 LBS. PER SQ. INCH.
SCALE 1 INCH = 1 FOOT

NOTE. ALL PLATES, STAYS, AND RIVETS TO BE OF SIEMENS MARTIN STEEL.
THE SHELL PLATES AND BUTT STRAPS, TO BE OF 28 TO 32 TONS PER SQ.
INCH TENSILE STRENGTH. ALL RIVET HOLES TO BE DRILLED IN PLACE AFTER
THE PLATES ARE BENT. ALL FLANGED PLATES TO BE ANNEALED AFTER
FLANGING. THE SCREW STAYS ARE 1 1/2", 1 3/8", 1 1/2", 1 1/8" EFF. DIA. SCREW INTO BOTH
PLATES AND NUTTED AT EACH END, EXCEPT ON OUTSIDE OF SHELL WHERE
THEY ARE RIVETED OVER AS SHOWN. ALL SCREW STAYS TO BE SCREWED
10 THS. PER INCH. THE TUBES ARE OF IRON. THE ORDINARY TUBES ARE
2 1/2" EXT. DIA. X NO. 8 LSG. THICK SWELLED 1/4" AT FRONT END. THE
STAY TUBES ARE 3 1/2" EXT. DIA. X 1/2" THICK IN BODY 1/4" THICK EFF. SCREWED
AT ENDS TO 3 1/2" & 3 1/2" DIA. 10 THS. PER INCH. AND NUTTED AT FRONT
END WHERE SHOWN.
A MANHOLE IN SHELL WITH SHORTER AND LONGITUDINALLY FITTED WITH
A FLANGED COMPENSATING RING.



DIMENSIONS.

	1 BOILER.	2 BOILERS.
LENGTH OF FIRE BARS	5'-6"	5'-6"
AREA OF FIRE GRATE	56 sq	112 sq
DIAM. OF TUBES OUTSIDE	3 1/2"	3 1/2"
LENGTH OF TUBES BETWEEN PLATES	6'-9"	6'-9"
N ^o OF TUBES	249	498
AREA THROUGH TUBES	12.6	25.2
SURFACE OF TUBES	1545 sq	3090 sq
TOTAL HEATING SURFACE	1925 sq	3850 sq
WORKING PRESSURE	180 LBS. PER SQ. IN.	



9.12.08

4 P.P.
10.12.08

10.12.08

N^o 558

8152 B
7-12-1908

35

Messrs Earles & Co

N° 558 Boilers

⁵/₈ "La. Loure"

Hull Report No. 21.224

N° 1400

Lloyds Test

360 lbs.

J.B.

24-4-09



RETAIN

20/12/08
14/12/08



© 2021

Lloyd's Register
Foundation

W1493-0204

Lloyd

W1443-0204



© 2021

Lloyd's Register
Foundation