

7:20:06
REGISTERED
LONDON

STEEL BOILERS N° 436

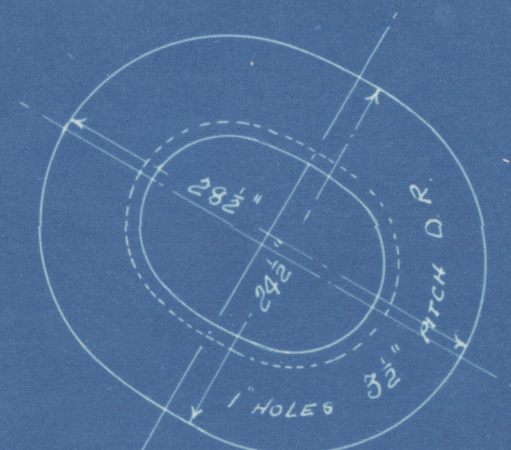
TO LLOYDS REQUIREMENTS & TESTS FOR 120 LBS W.P.

SCALE 1" = 1 FOOT

HEATING SURFACE

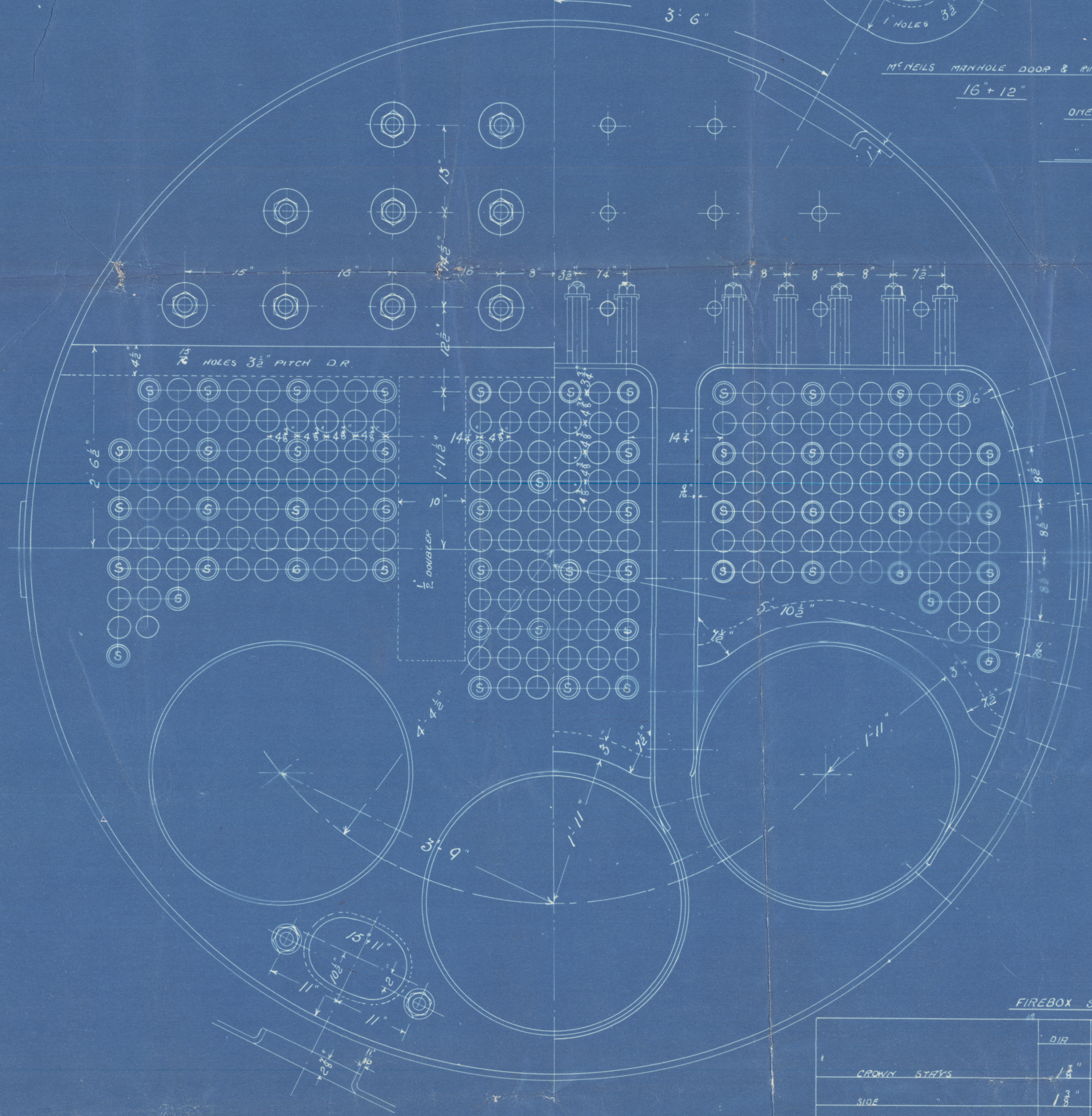
2 1/4 TUBES	1183	SQ. FT.
FURNACES	104	"
COMB. CH.	170	"
TOTAL	1460	"

GRATE SURFACE 114 sq. ft.



M. REELS MANHOLE DOOR & RING
16" x 12"

ONE OFF RIGHT
LEFT.



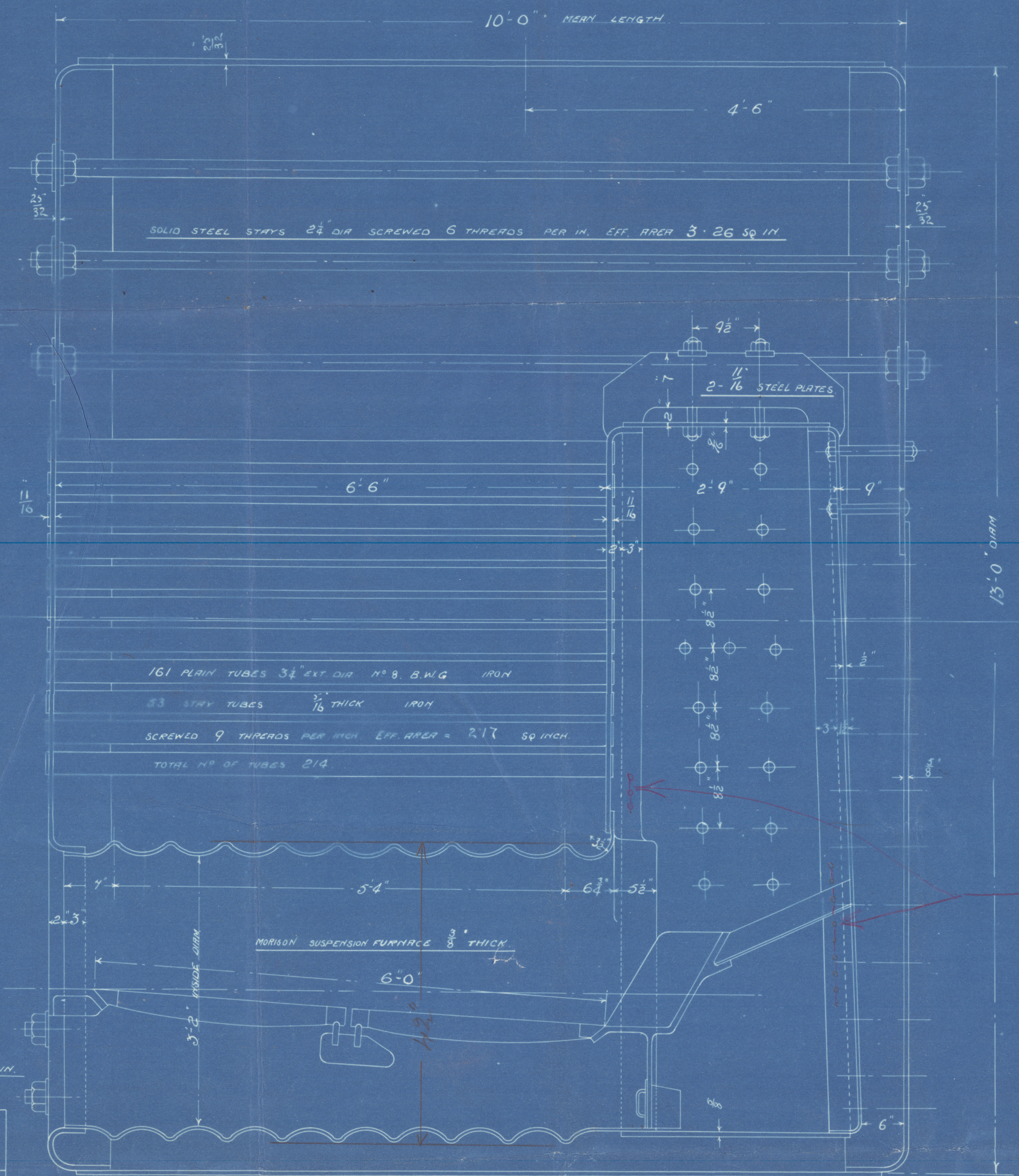
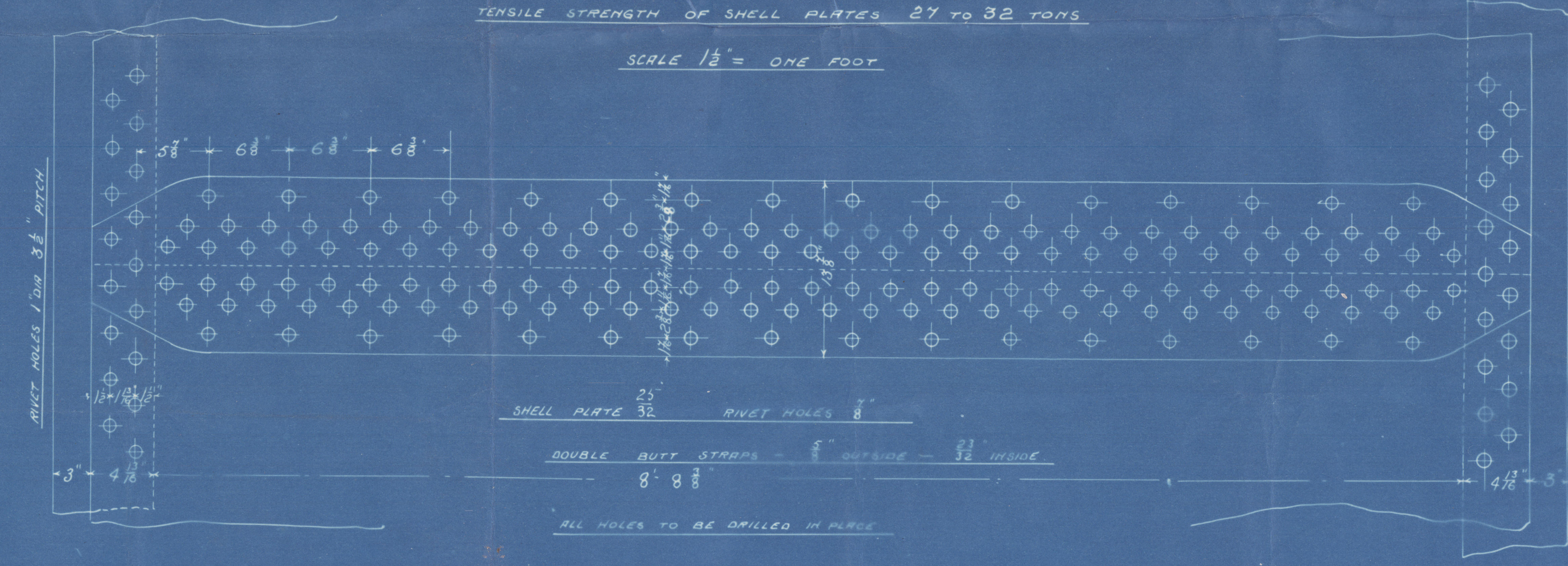
2" DIA STEEL STAY
6 THREDS PER IN. EFF. AREA 2.53 SQ. IN.

FIREBOX STAYS

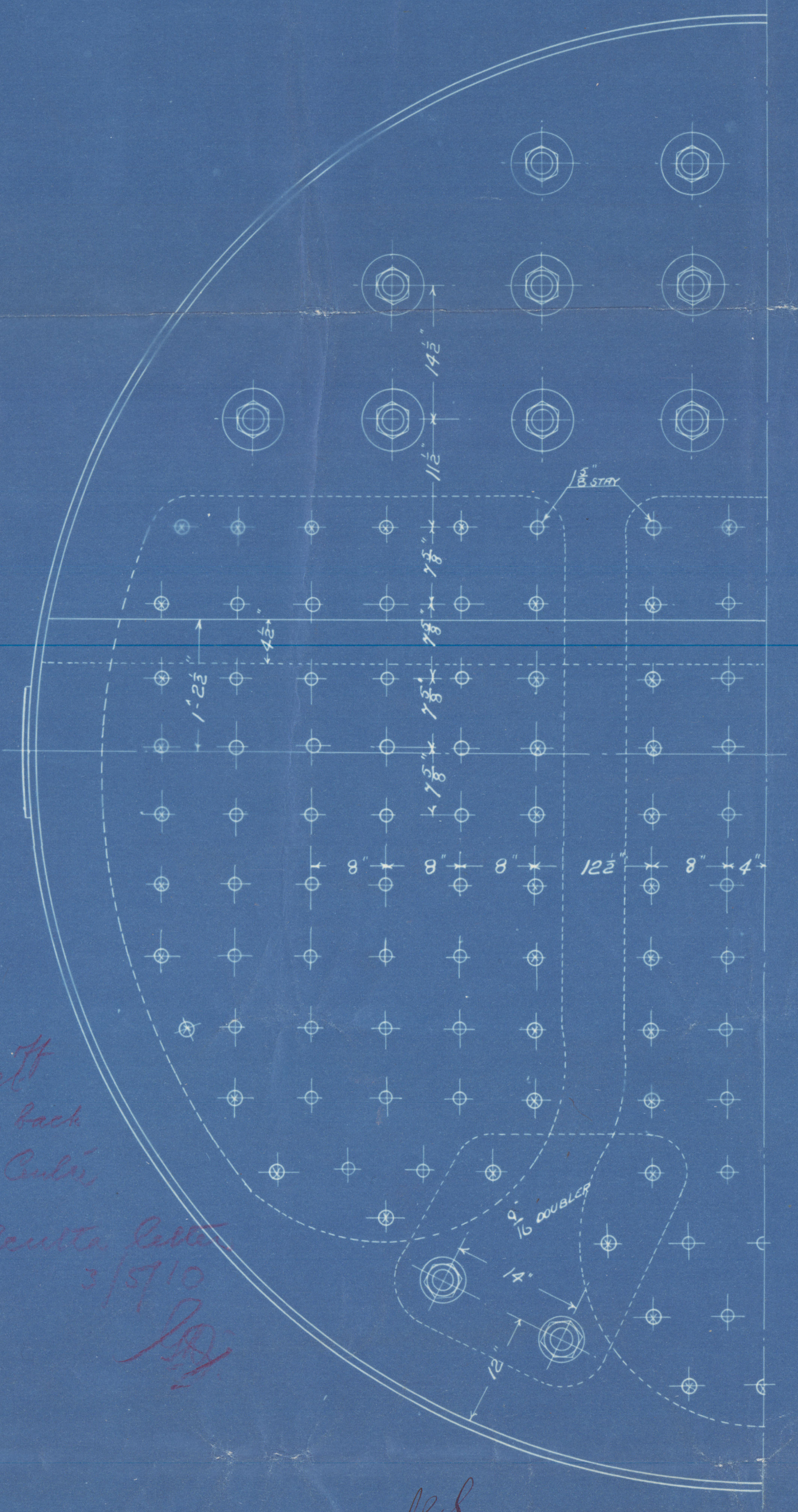
	DIA	N° OF TUBES	EFF. AREA	REMARKS
CROWN STAYS	1 1/2"	9	1.19	NETTED BOTH SIDES
SIDE	1 1/2"	9	1.19	INSIDE COMB. CH. BODY
BACK	1 1/2"	9	.96	
Marginal	1 1/2"	9	1.45	BOTH ENDS

TENSILE STRENGTH OF SHELL PLATES 27 TO 32 TONS

SCALE 1 1/2" = ONE FOOT



4 panels
Rivet heads dropping off
plates between panels
holes cracked (on back
plate - inspection of boiler
see Calcutta letter
3/5/10
amw
5/2/06



W. SIMONS & CO., LTD
LONDON WORKS,
RENFREW.

7.2.06

Tom Simons VC
No 436
Gh. rpt. no. 24630



Boiler

See letter re cracking between rivet
holes of C.C. tube plate & tack plate
landings to wrapper plate

Calcutta letter 3/5/10

four years after build

Yd.



© 2019

Lloyd's Register
Foundation

W1487-0163