

31.3.06

MIDSHIP SECTION

S.S. NOS 366-7

STEEL SCREW TRAWLERS

TO BE CLASSED 100 A.1. AT LLOYDS

DIMENSIONS 125' 0" x 22' 0" x 13' 3 1/4" 12' 6" HOLD

SCALE 1/2" = 1 FOOT

E.B. CASING AS PREVIOUSLY APPROVED

DECK PLATED OVER AT SIDES OF CASING

NUMERALS AS PER RULES

1/2 BREADTH	10.95
1/2 GIRTH	20.33
DEPTH	13.70
	44.98 1 ST ND

LENGTH AS PER RULE 123.87

5571.6726 2ND ND

PROPORTIONS

DEPTHS TO LENGTH	9.04
BREADTHS TO LENGTH	5.6

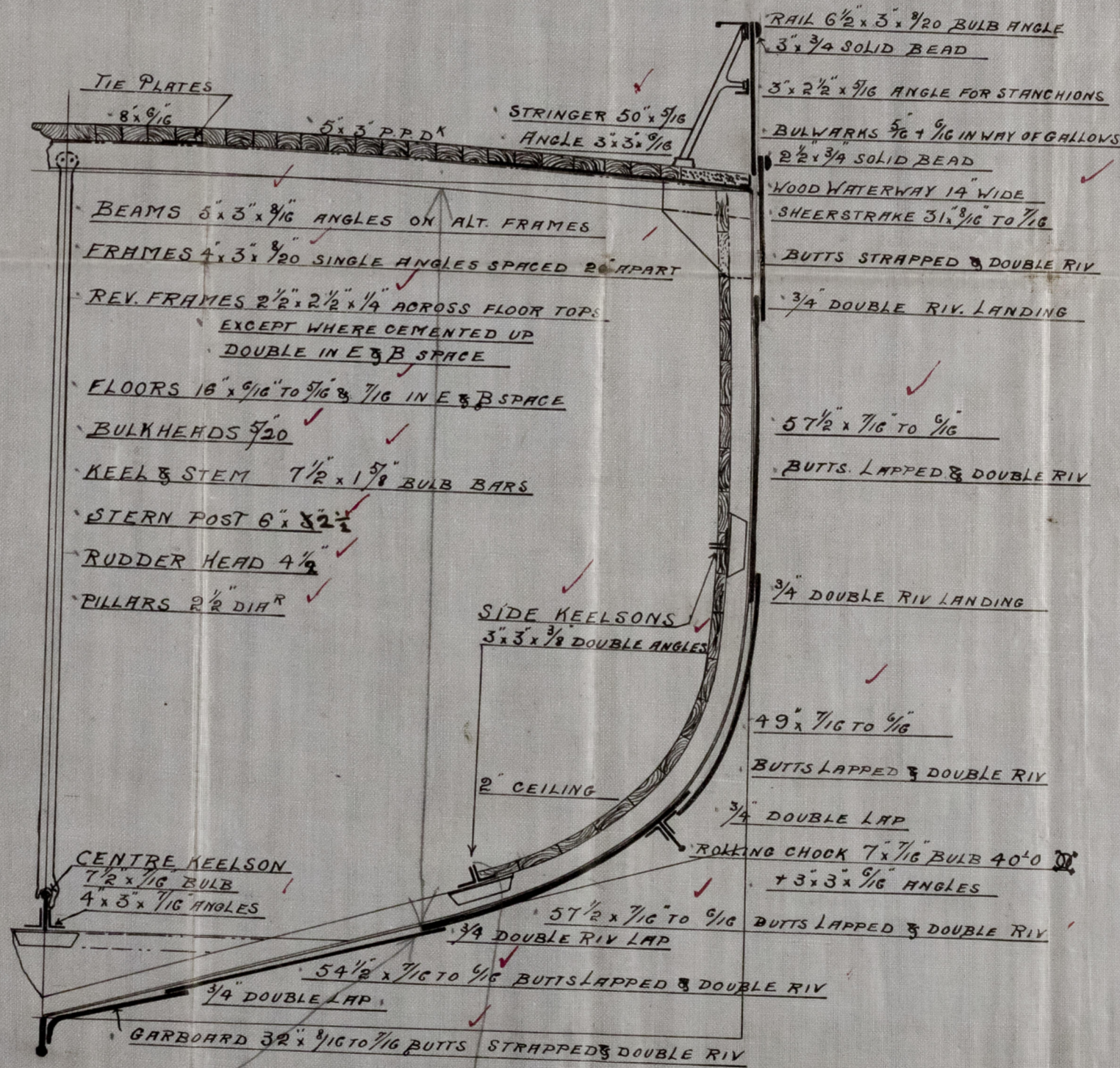
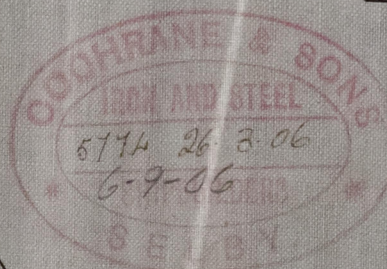
EQUIPMENT

1 ST BOWER ANCHOR	5 1/2 CWTs EX STOCK
2 ND " " "	5 " " " "
3 RD " " "	2 3/4 " " " "
105 FATHS	1 1/2" SHORT LINK CABLE
60 "	6" HAWSER
60 "	4 1/2" WARP

COCHRANE & SONS

SHIPBUILDERS

SELBY



Line stretched taught over top of the keelson and the amount of curve on the bottom noted before launching and verified 31.3.06. B.C. Landing point where measurements from beams to shell were taken, after the launch.

Cochran & Sons.

No. 366 + 367.

Midship Section

of Liberia Hull Rpt No. 18285
Ormonde - - 18435

RETAIN

W1486-0112

Midship Section 366-7

Midship Section 366-7



© 2021

Lloyd's Register
Foundation