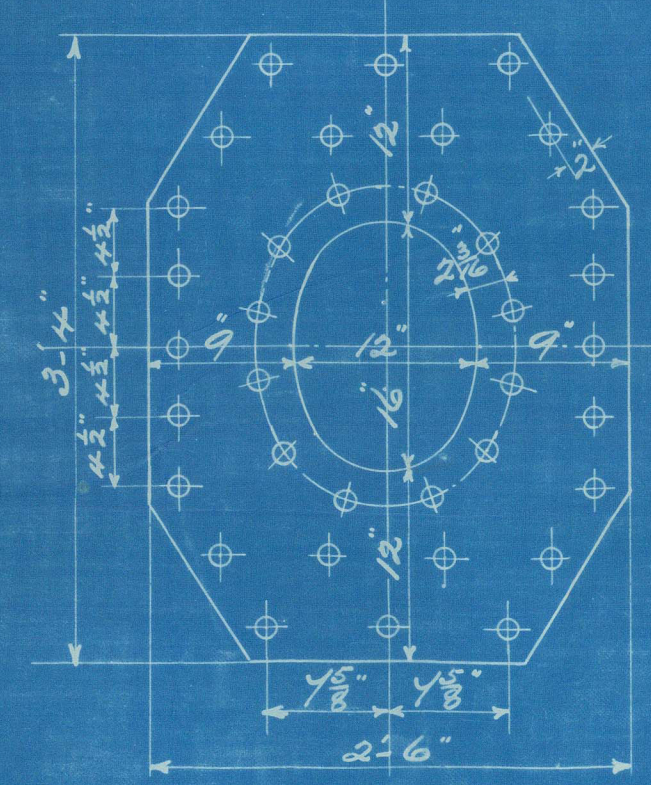


DIA. OF BOILER 12'-0" inside
 LENGTH OF DO 10'-0" inside
 NUMBER OF TUBES 158
 LENGTH OF DO 6'-4 1/2" between plates
 DIA. OF DO 3 1/2" AREA THRO TUBES 8.1 sq ft.
 HEATING SURFACE IN TUBES 920 sq ft
 TOTAL HEATING SURFACE 1164 sq ft
 FIRE BAR SURFACE 5 ft bars 3 1/2 sq ft.
 DIA. OF SAFETY VALVES
 CUBIC FEET OF STEAM SPACE 220 cu. feet
 WORKING PRESSURE 180 lbs. LLOYDS

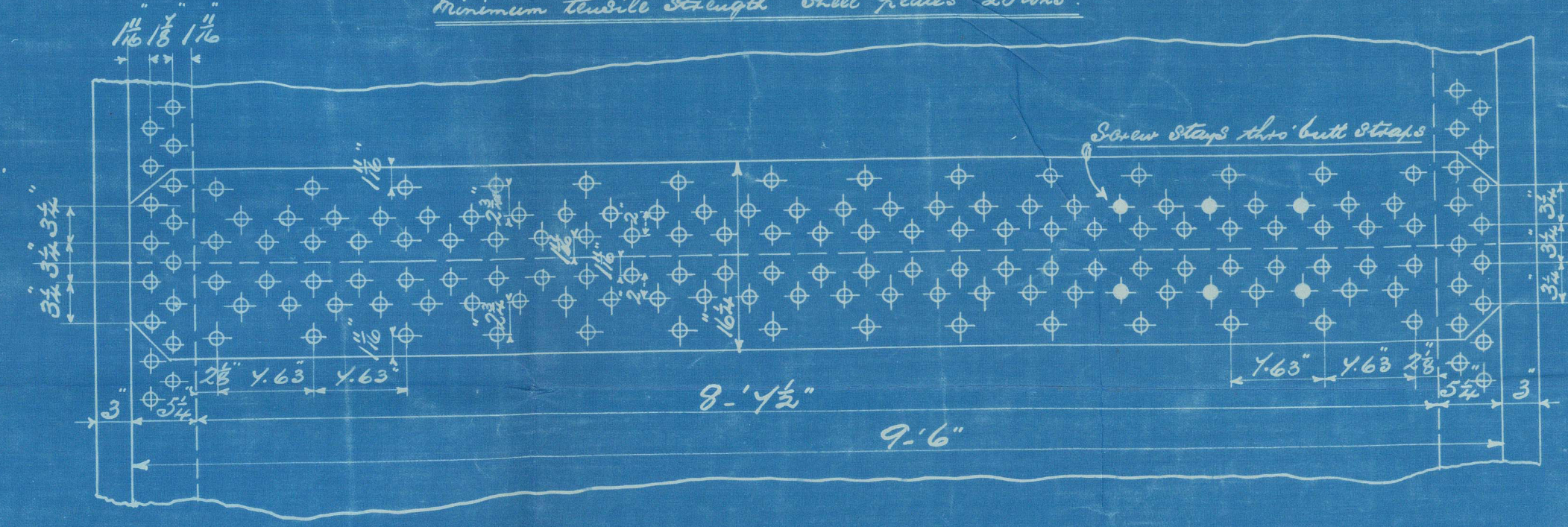
R.

9:12:05

Doubling plate 1" thick
 Rivets 1 1/2" Holes 1 3/4"
 Fitted outside shell and shorter axis longitudinally.



Circumferential Beams 8 1/2" pitch
 % plate 65.4
 % rivet 55.0
 Longitudinal Beams 4.63 pitch
 % plate 85.2
 % rivet 98.0
 Double butt straps 1" thick
 All rivets in shell 1 1/2" dia. Holes 1 3/4" dia.
 Minimum tensile strength Shell plates 28 tons

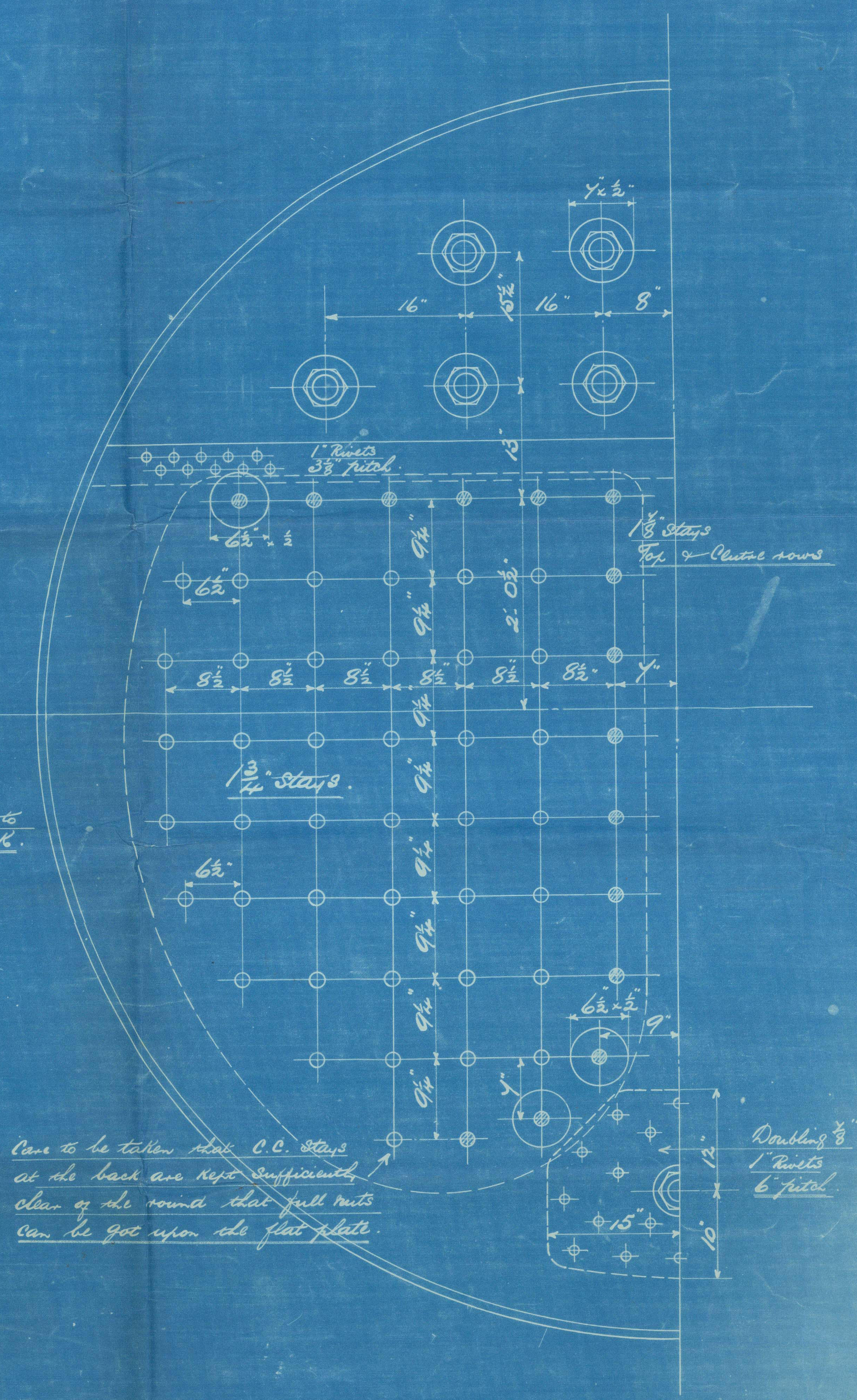
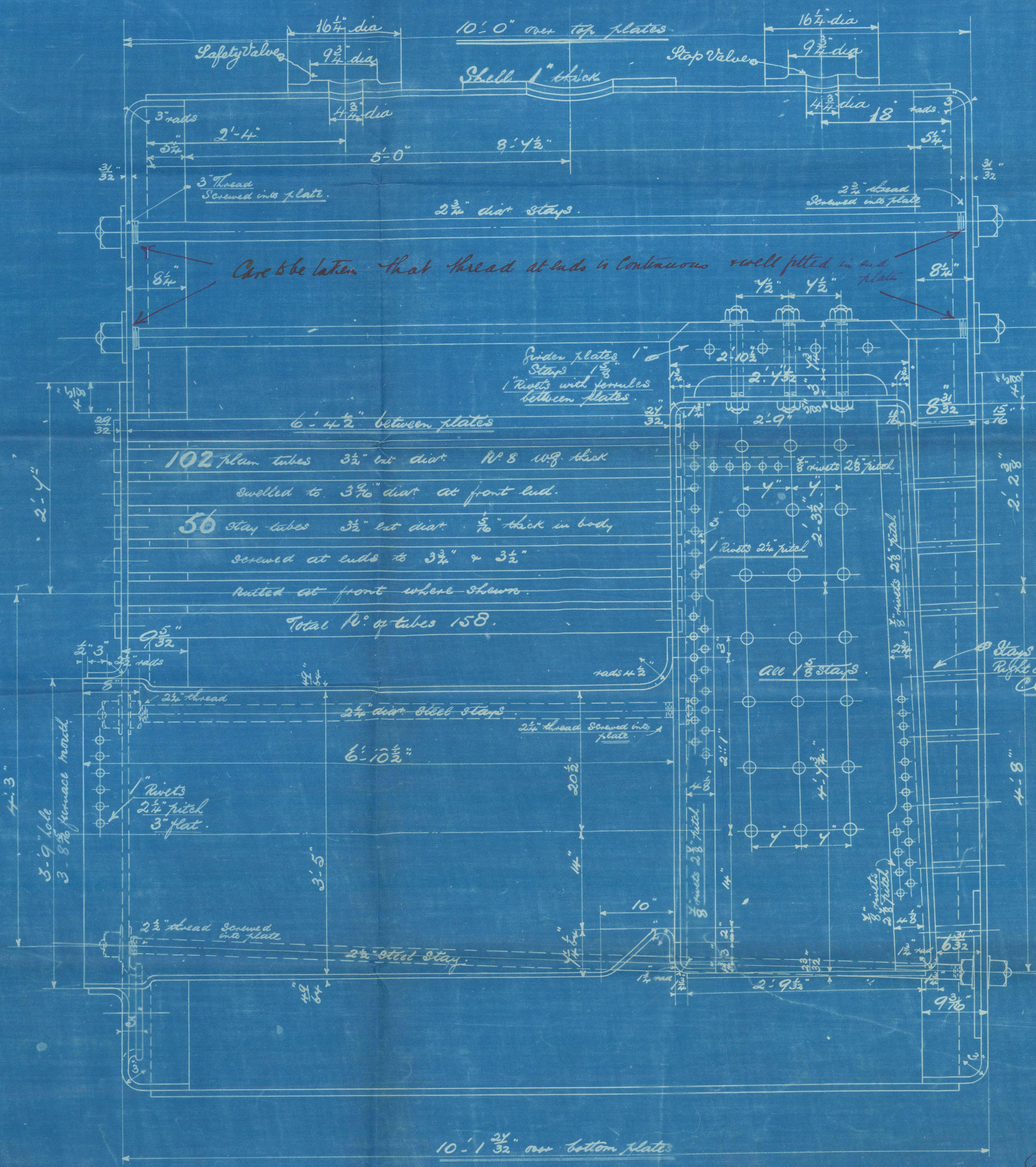
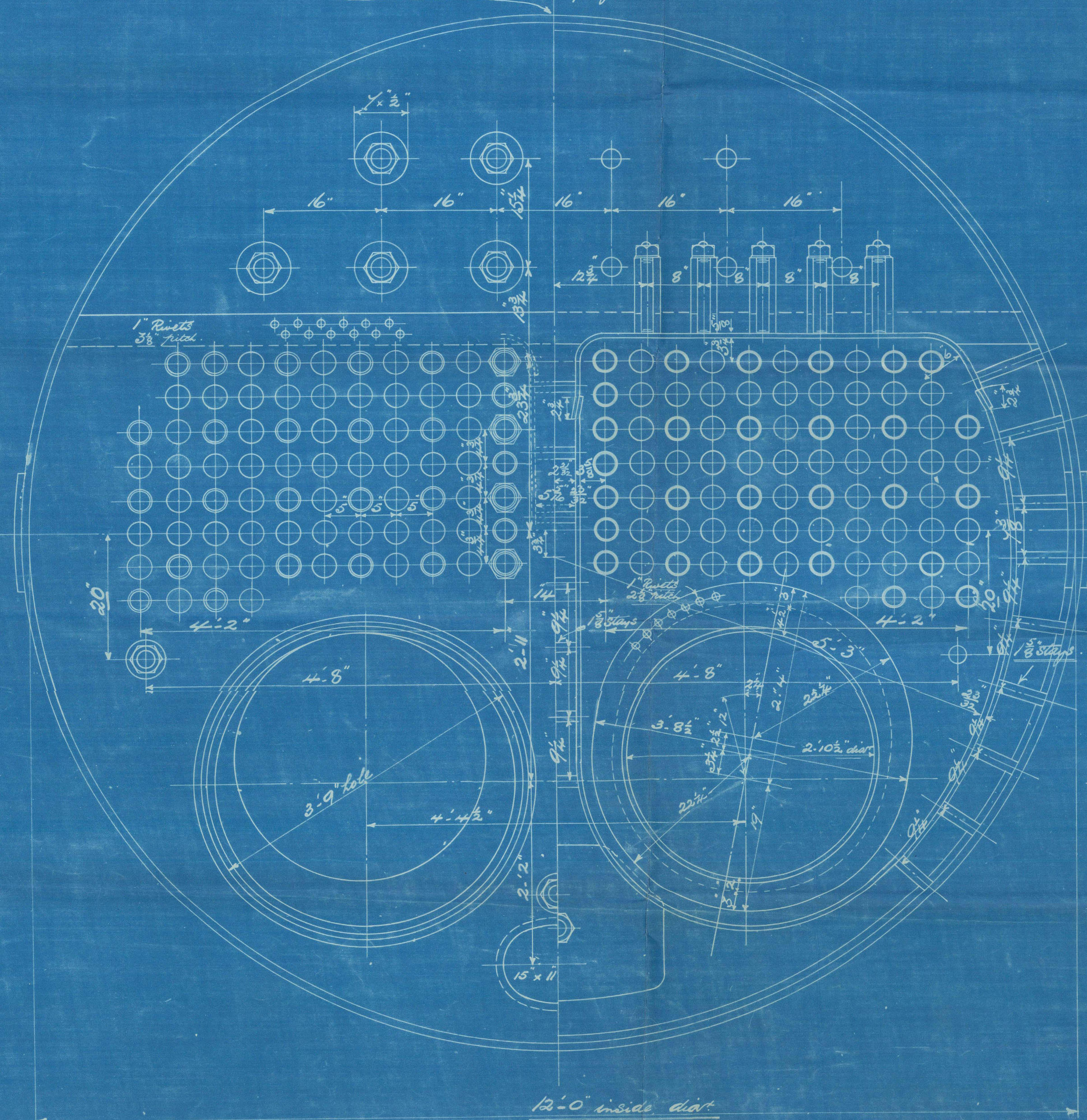


Note:
 The plates rivets & stays of steel by the Siemens-Martin process
 All rivet holes drilled throughout the boiler. Those in shell after
 the plates are bent
 All flanged plates to be annealed after the plates are bent
 Stays are not to be welded. Tubes are of iron.
 The tensile strength of the shell plates to be between 28 & 32 tons
 per sq. inch.
 The combustion chamber stays are screwed into head plates & fitted
 with a nut at each end. Washers on outside of shell only.
 None inside C.C.

Particulars of Staying.

Stays	Dia.	No. of stays per sq. inch	Sq. area of stays
Steam space stays	2 1/2"	6	5.055 sq. in.
Full plate	2 1/2"	8	3.423 "
Bottom stay	2 1/2"	6	4.108 "
Stay tubes	3 1/2"	9	2.364 "
C.C. stays	1 1/2"	10	1.46 "
	1 1/2"	10	2.046 "
	1 1/2"	10	2.394 "

No. 10 hole doubling, safety and stop valve blocks to be placed on top of boiler

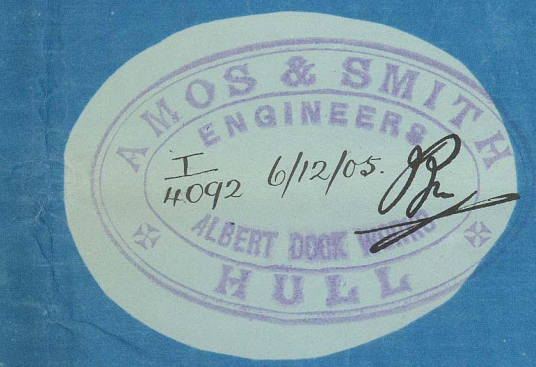


Note to be taken that C.C. stays
 at the back are not sufficiently
 clear of the round that full nuts
 can be got upon the flat plate.

10106

AMOS & SMITH
 ENGINEERS
 ALBERT DOCK WORKS
 HULL

STEEL BOILERS N^{os} 998 & 999.



TITLE Steel Boilers
 FOR WHOM
 DATE 3/2/05
 ORDER No. 546 & 547
 IF MADE
 SCALE 1" = 1 foot

© 2021
From AMOS & SMITH, HULL.

Enclosure for

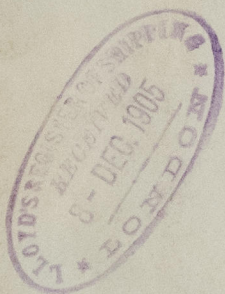
Lloyds Surveyors.
Hull

Messrs
Amos Smiths

Boilers No 998.9

Wkg press.

180 lbs □



s/s Liberia Hull Rpt No. 18285
- Camorde " - -18435

RETAIN

© 2021

Lloyd's Register
Foundation

W1486-0111