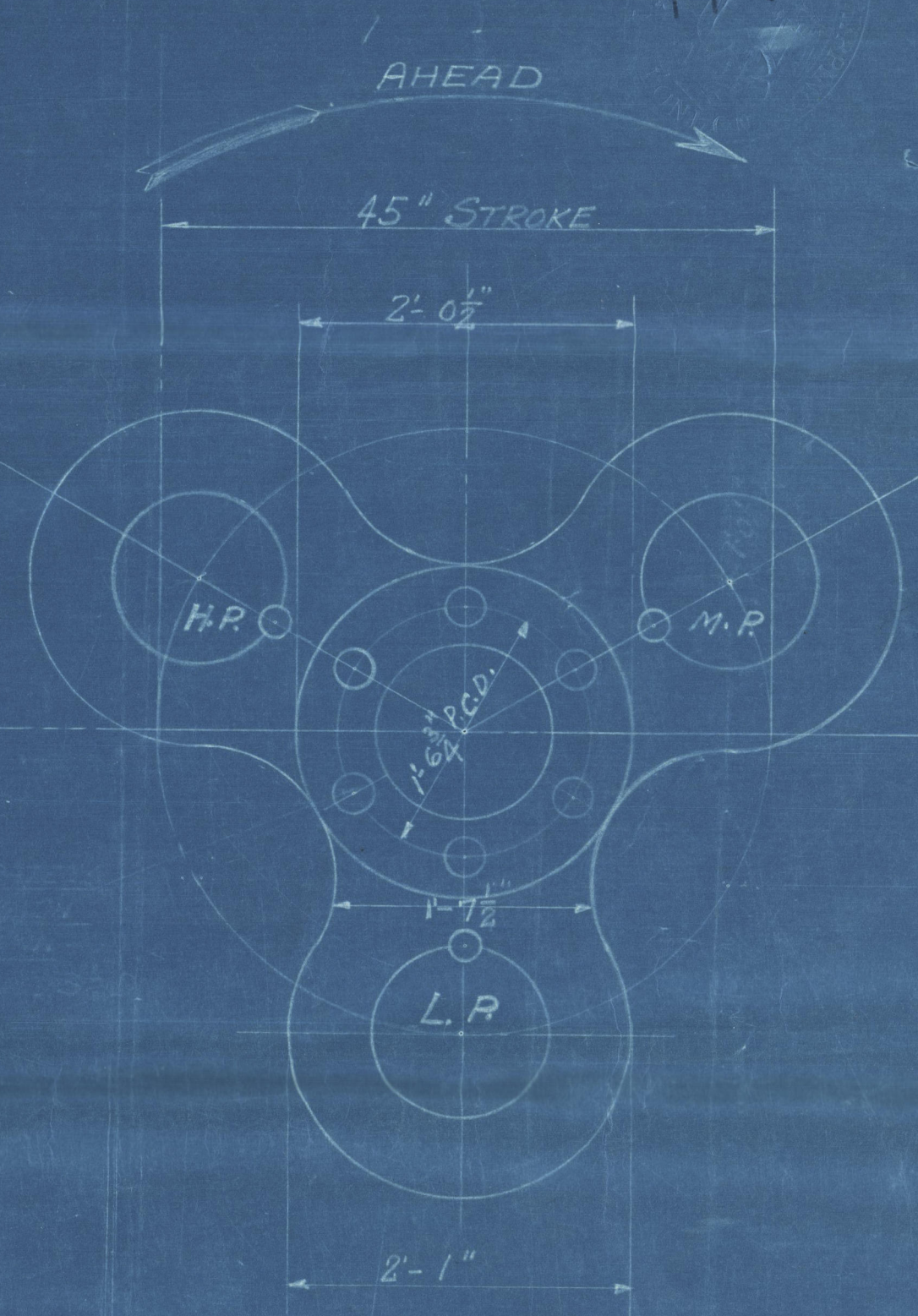
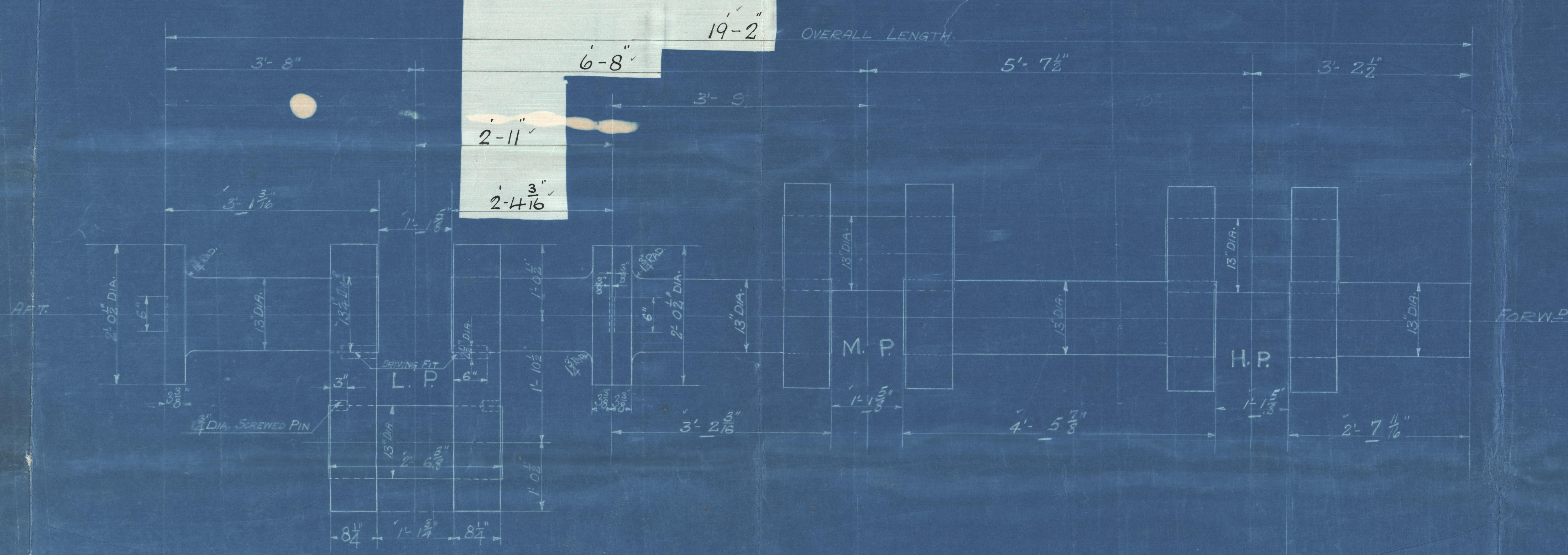
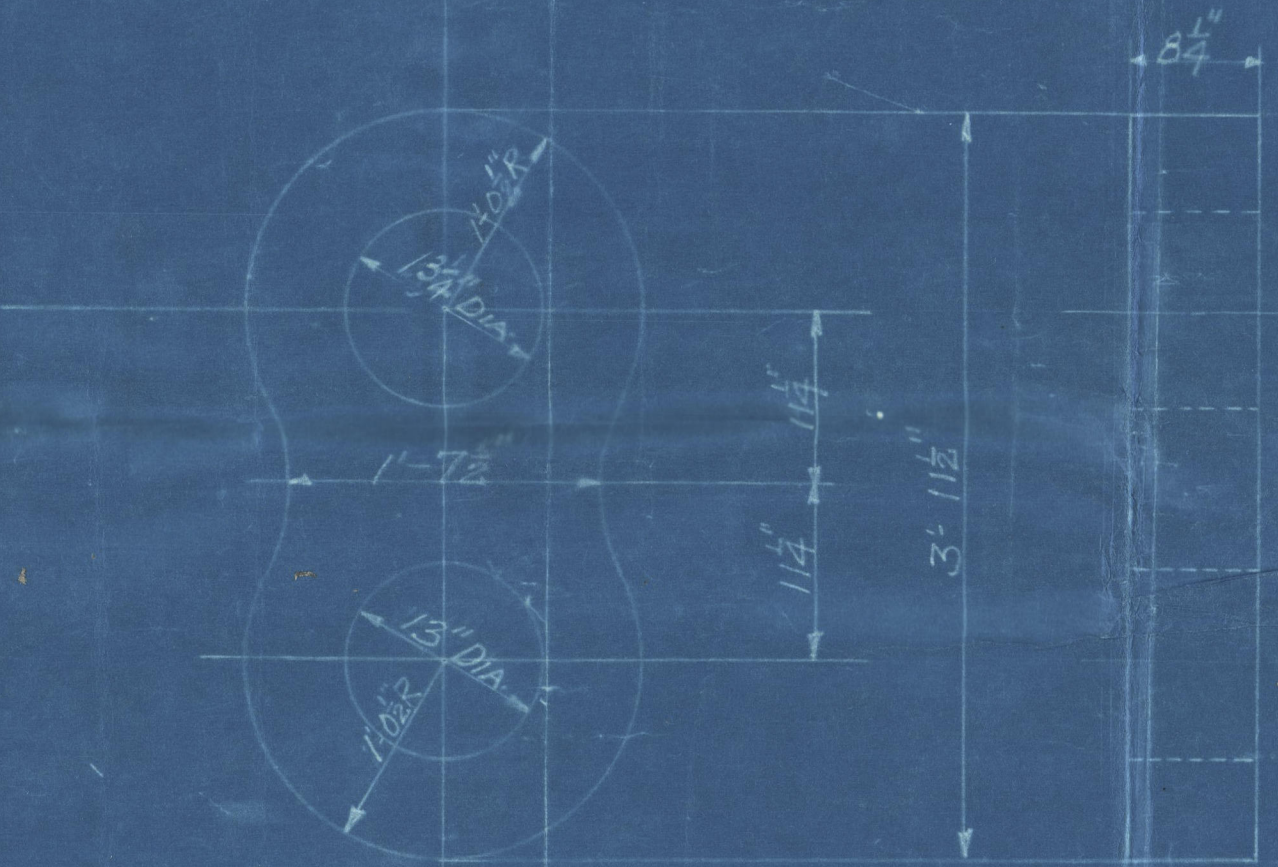
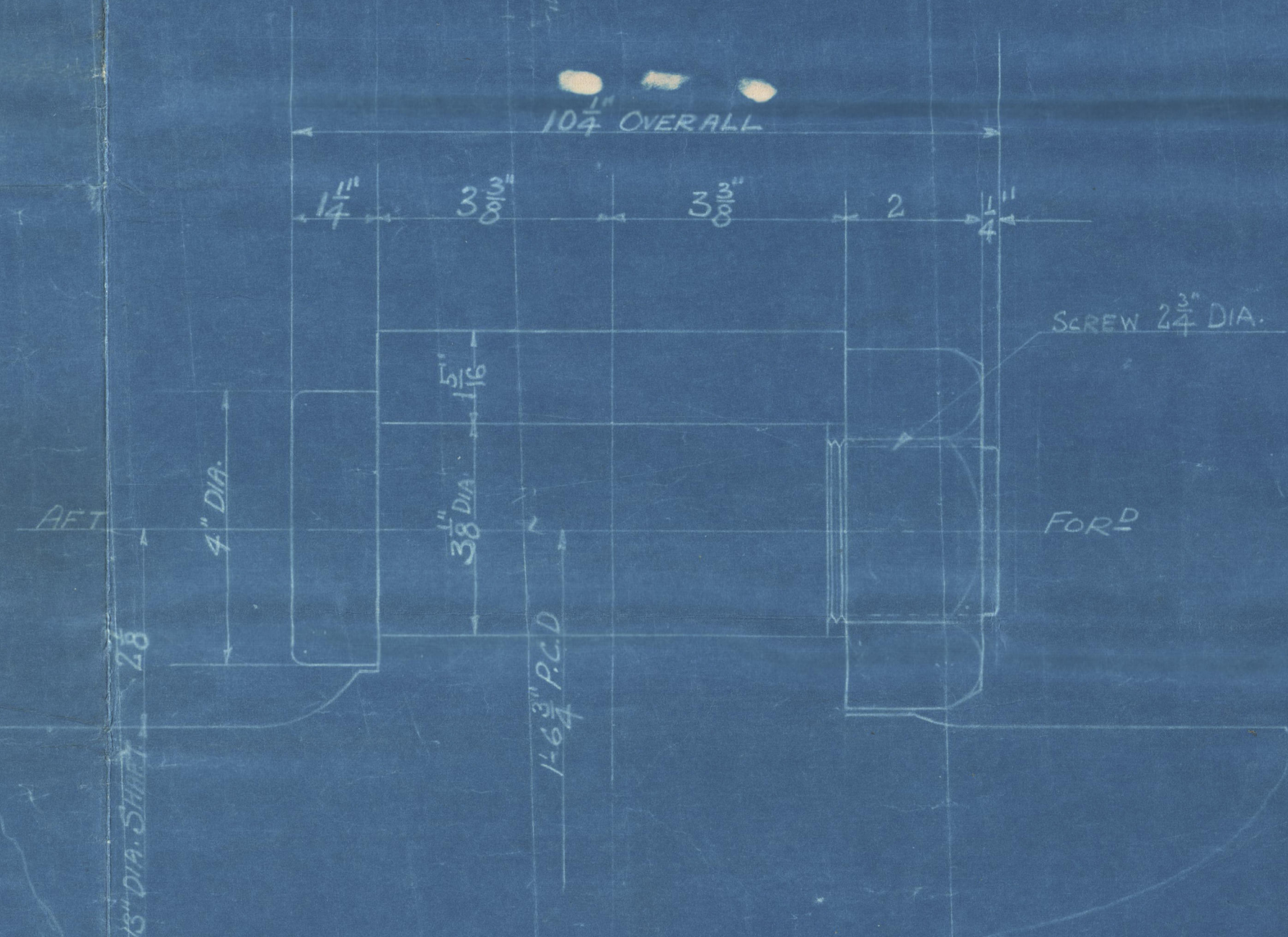


25/2/29



— LOOKING FORWARD —
— ON AFT. END —



— CRANK SHAFT PINS & WEBS ALL OF —
— FORGED INGOT STEEL —
— TO PASS LLOYDS SURVEY —

— SCALE HALF SIZE —

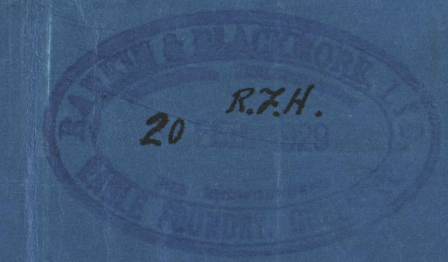
— DETAIL OF COUPLING —
— 6-OFF STEEL BOLTS —
— IN EACH COUPLING —

— CRANK SHAFT WEB —
— 6-OFF FORGED INGOT STEEL —

— SCALE 1 IN. = 1 FOOT —

Done 21/2/29

~~XXXXXXXXXX~~
Warrack Roadyard 1/5 417
— CRANK SHAFT —



— ENGINE No 441. —

Lloyd's Register Foundation

W48-0051

Crank shaft

Barnshin

g sk. 19106.

W1148-0051



Lloyd's Register
Foundation