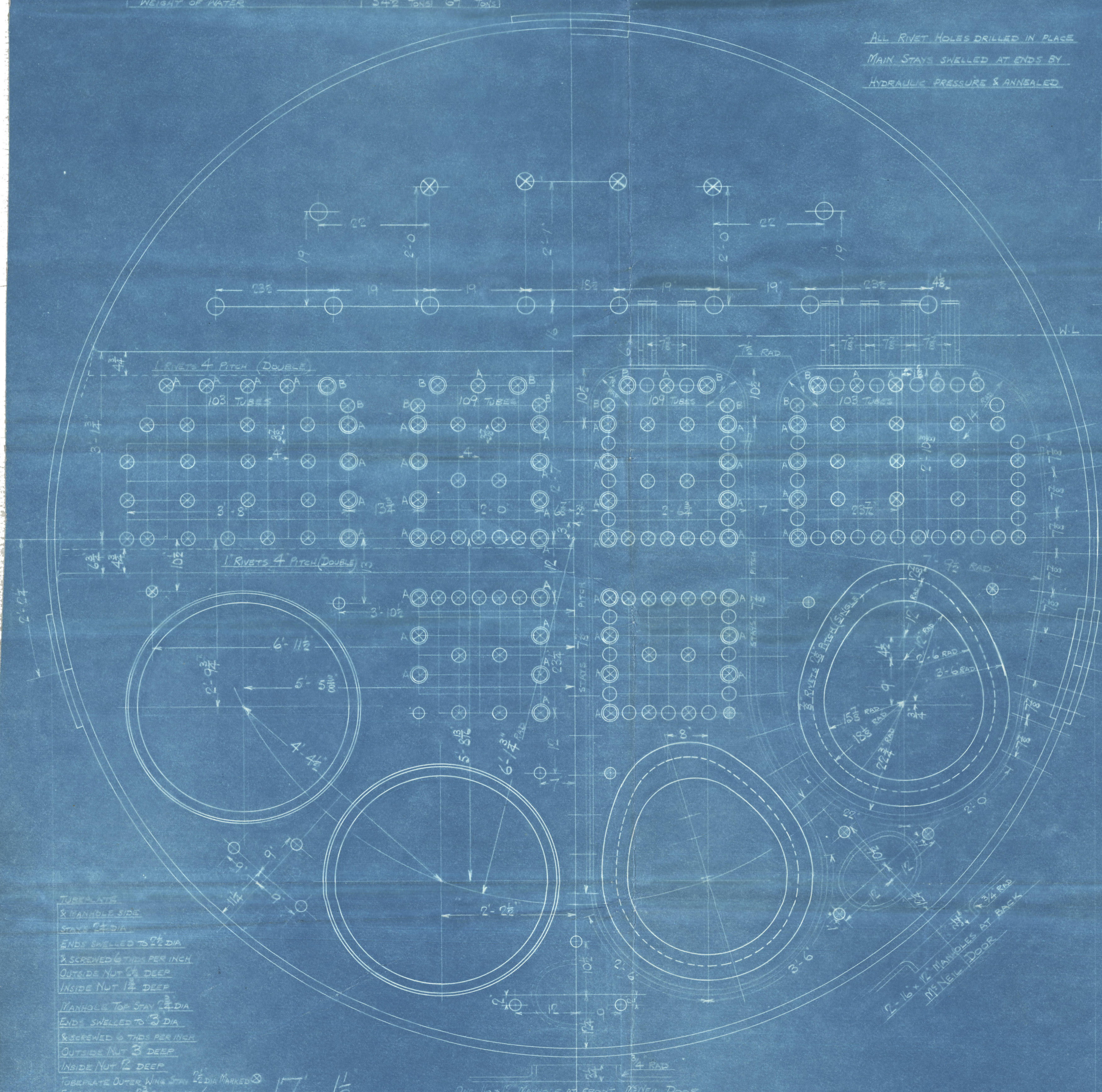
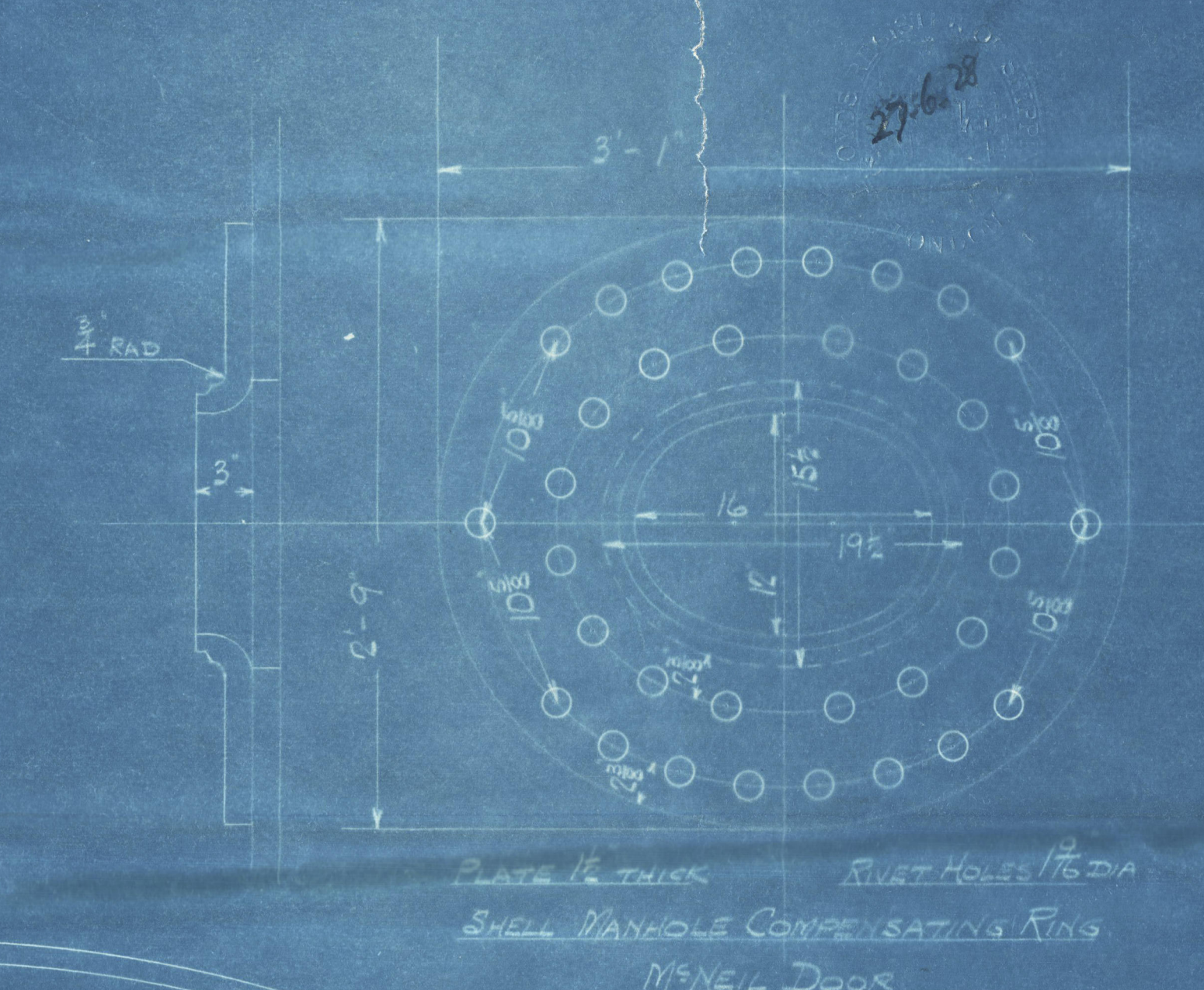
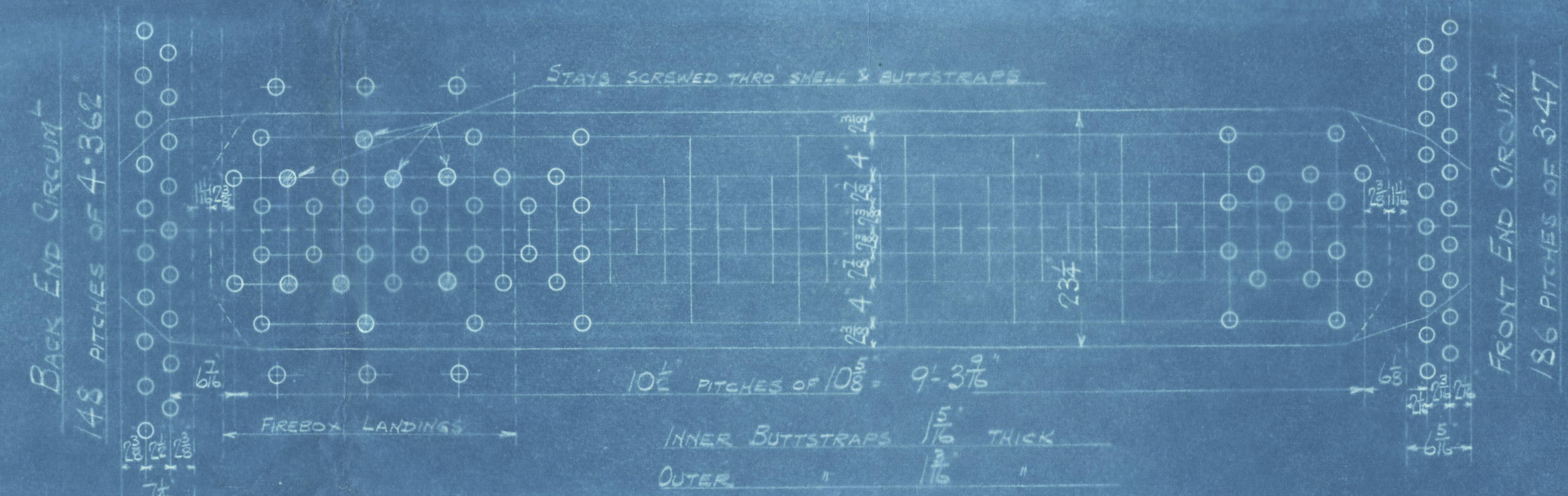


SURFACES		ONE END	2 ENDS
TUBES		2386 #	4772 #
FIREBOX TOP AND SIDES		228	456
BACK		105	210
TUBEPLATE		71	142
FURNACES		199	398
TOTAL HEATING SURFACE		2986 #	5972 #
GRATE AREA (5-6 BARS)		77	154
TUBE AREA		1253	2506
WATER AREA		186	372
STEAM SPACE		677	1354
GRATE AREA : HEATING SURFACE		1 : 38.8	
: TUBE		1 : 3	
: AREA		1 : 1.4	
: WATER		1 : 5.5	
: STEAM SPACE		1 : 3.5	
% BOILER AREA FIREBOX		3.4%	
HEIGHT OF WATER		3.4%	

RIVETING			
	LONG	BACK END CIRC	FRONT END CIRC
RIVET HOLE DIA	1 1/8	1 1/8	1 1/8
PITCH	10 1/2	4 1/2	3 1/2
% PLATE	35-59	64-1	60-3
% RIVET	86	45	42-5
% CAPBLED	877	—	—

LIMITS OF TENSILE STRENGTH & MATERIAL	
SHELL & BUTTSTRAPS	30 TO 34 TONS
GIRDERS	28 TO 32
OTHER PLATES	26 TO 30
FURNACES	26 TO 30
MAIN STAYS	28 TO 30
SCREENED STAYS	26 TO 30
RIVET BARS	26 TO 30

ALL RIVET HOLES DRILLED IN PLACE
MAIN STAYS SHELL AT ENDS BY
HYDRAULIC PRESSURE & ANNEALED



12-0 MEAN LENGTH
MAIN BOILER
TWO OF EACH CONT. NO.
CONT. NO. 884-895
WORKING PRESSURE 210 LBS PER SQUARE INCH
TEST 365
TO PASS LLOYD'S SURVEY
SCALE: ONE INCH = ONE FOOT

FIREBOX STAYS		STEEL
POSITION	NO.	DIA
BACK, TOP & SIDES	8	1 1/2
WIDE SPACE W/STAY	2	2.005
TOP CORNERS	2	2.122

ALL FIREBOX STAYS SCREENED THRU BOTH PLATES AND NOT FITTED AT EACH END EXCEPT STAYS FROM WING FIREBOX TO SHELL AND STAYS MARKED C IN BACK BOTTOM END WHICH PROTECT S AND ARE CALKED.
ALL 1 1/2" NUTS 1 1/2" DEEP EXCEPT ON GIRDERS TOP WHERE THE OUTSIDE NUTS ARE 1 1/2" DEEP
ALL 2" NUTS 1 1/2" DEEP
ALL 3 1/2" NUTS 1 1/2" DEEP

OT 33449.B



21-6-28
27/6/28

GLASGOW

DAVID ROWAN & CO. LTD

(2) BOILERS N^o 895

WP-210LBS

DUPLICATE OF N^o 894

LITHGOWS LTD SN^o 823

N ^o 18324
LLOYD'S TEST
365LBS
WP-210LBS
L.C.D.
12-6-29

Bahadur

GLASGOW REPORT No. 49587

Srk. 19089.

W147-0210



© 2021

Lloyd's Register
Foundation