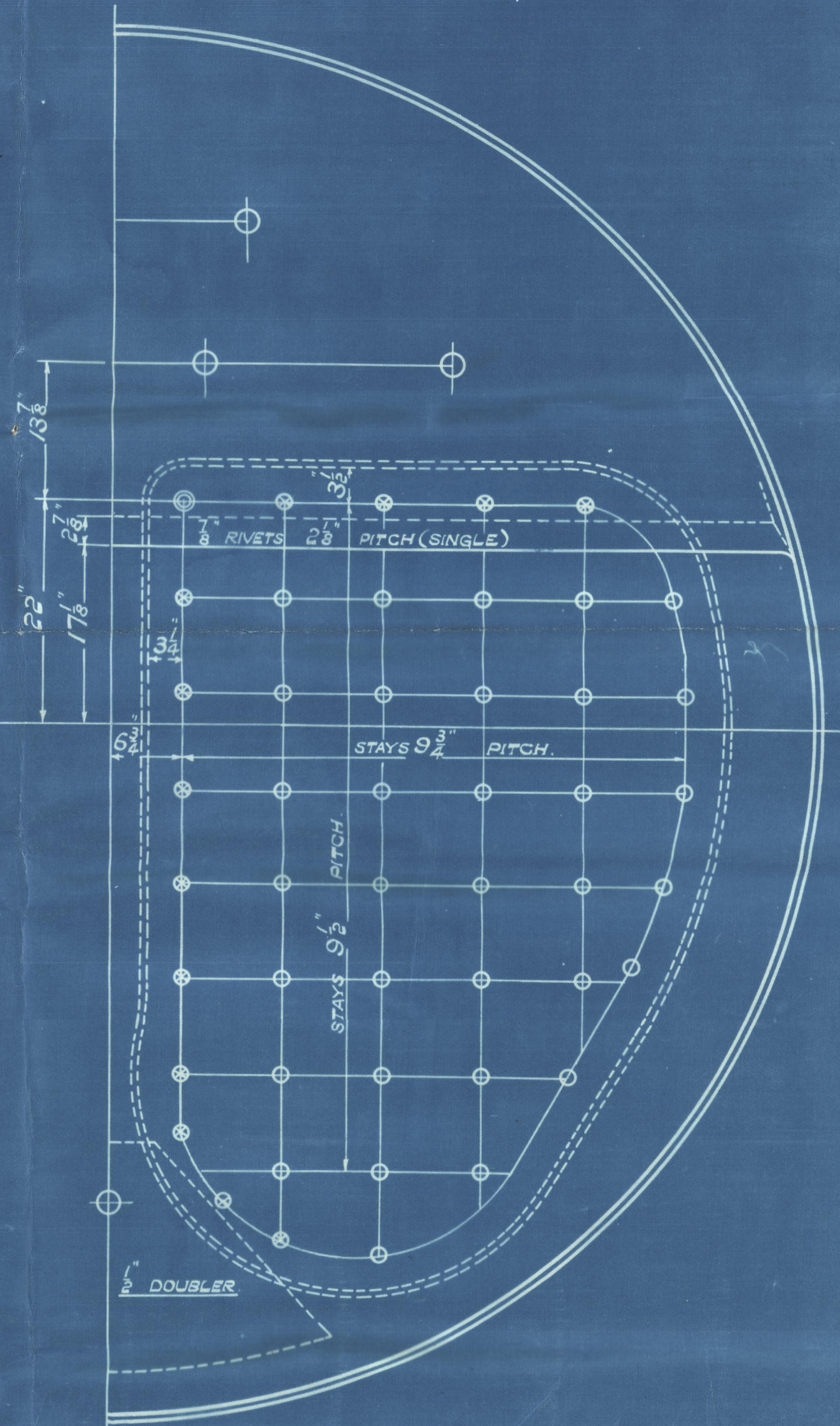
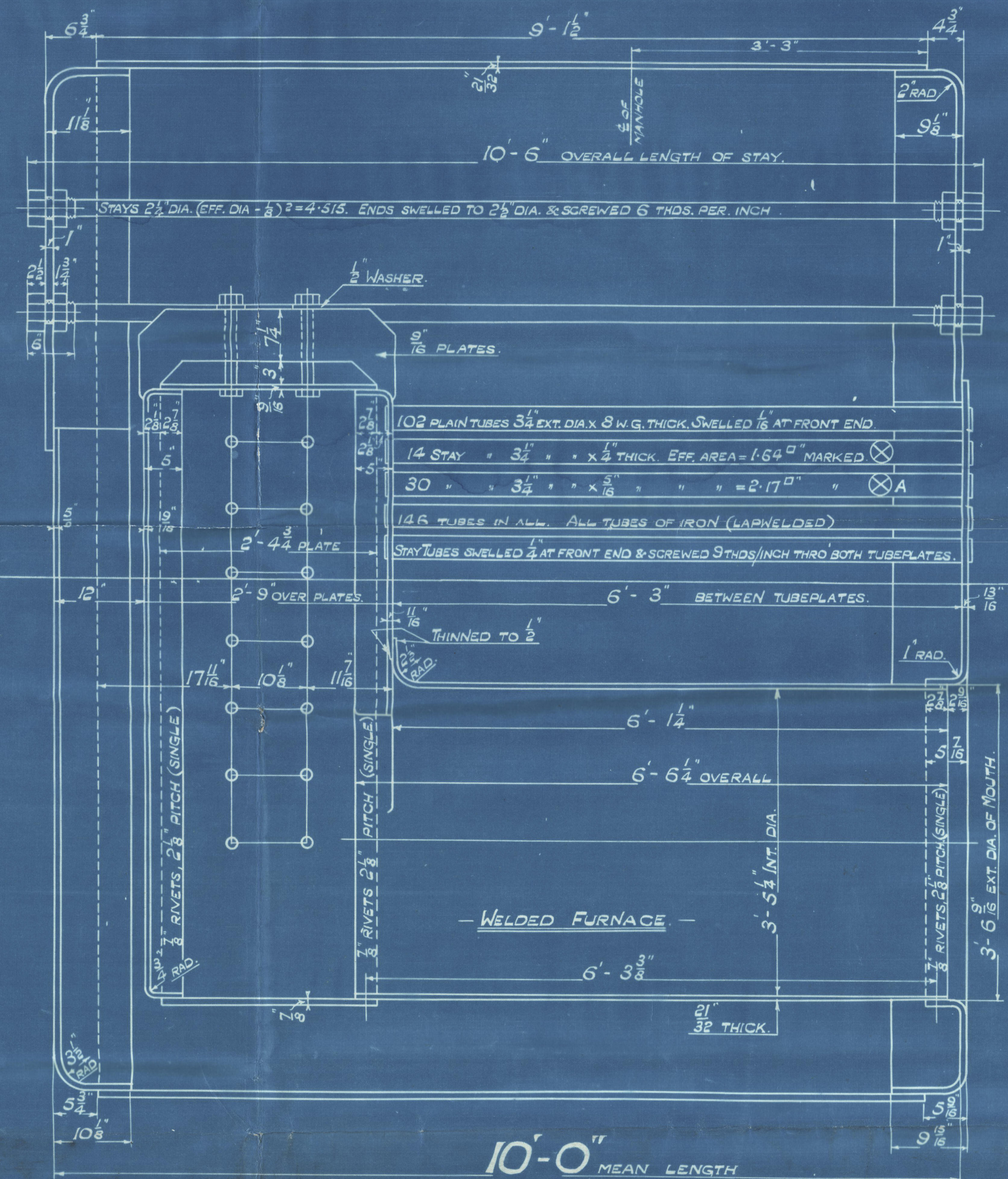
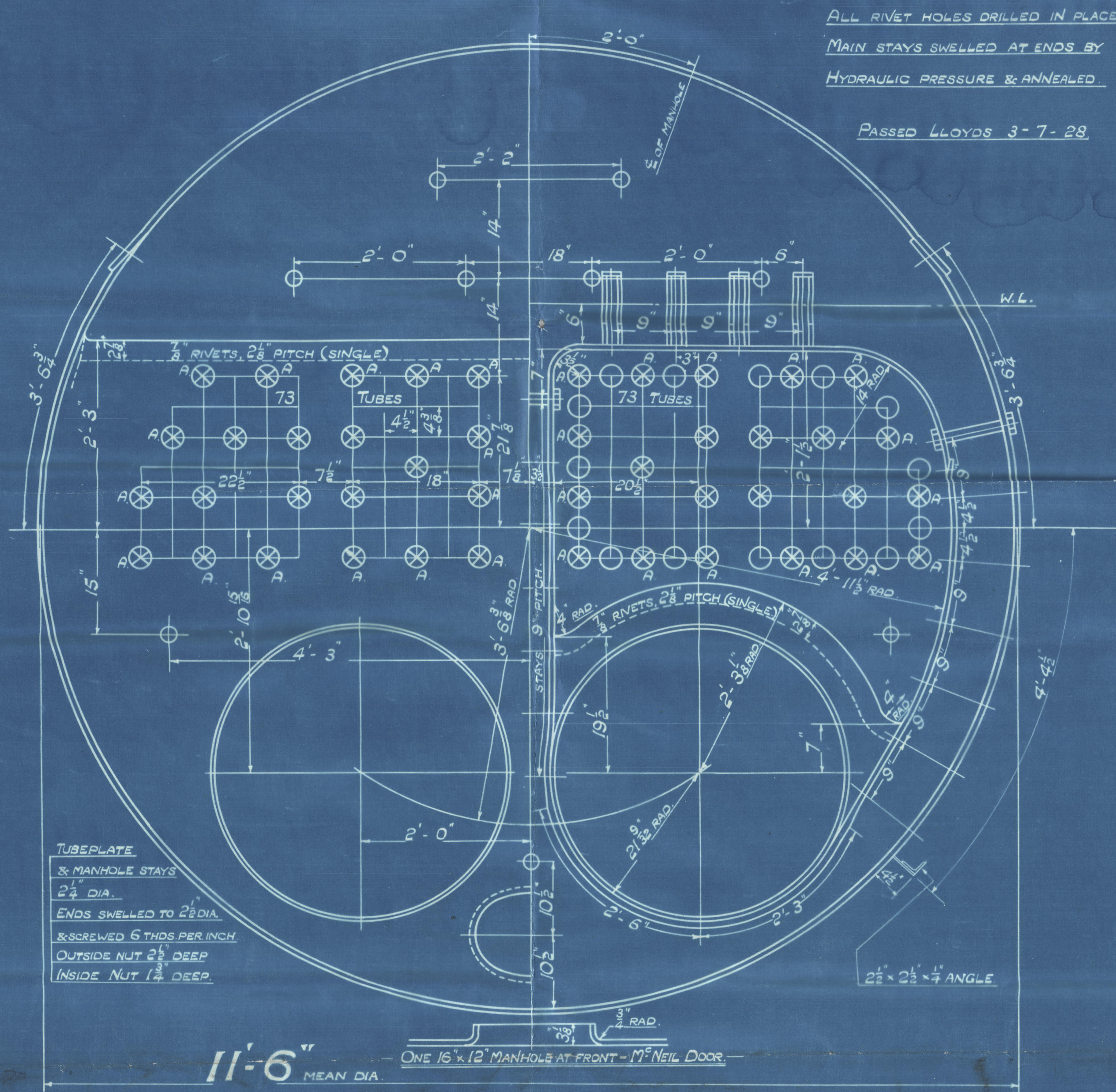
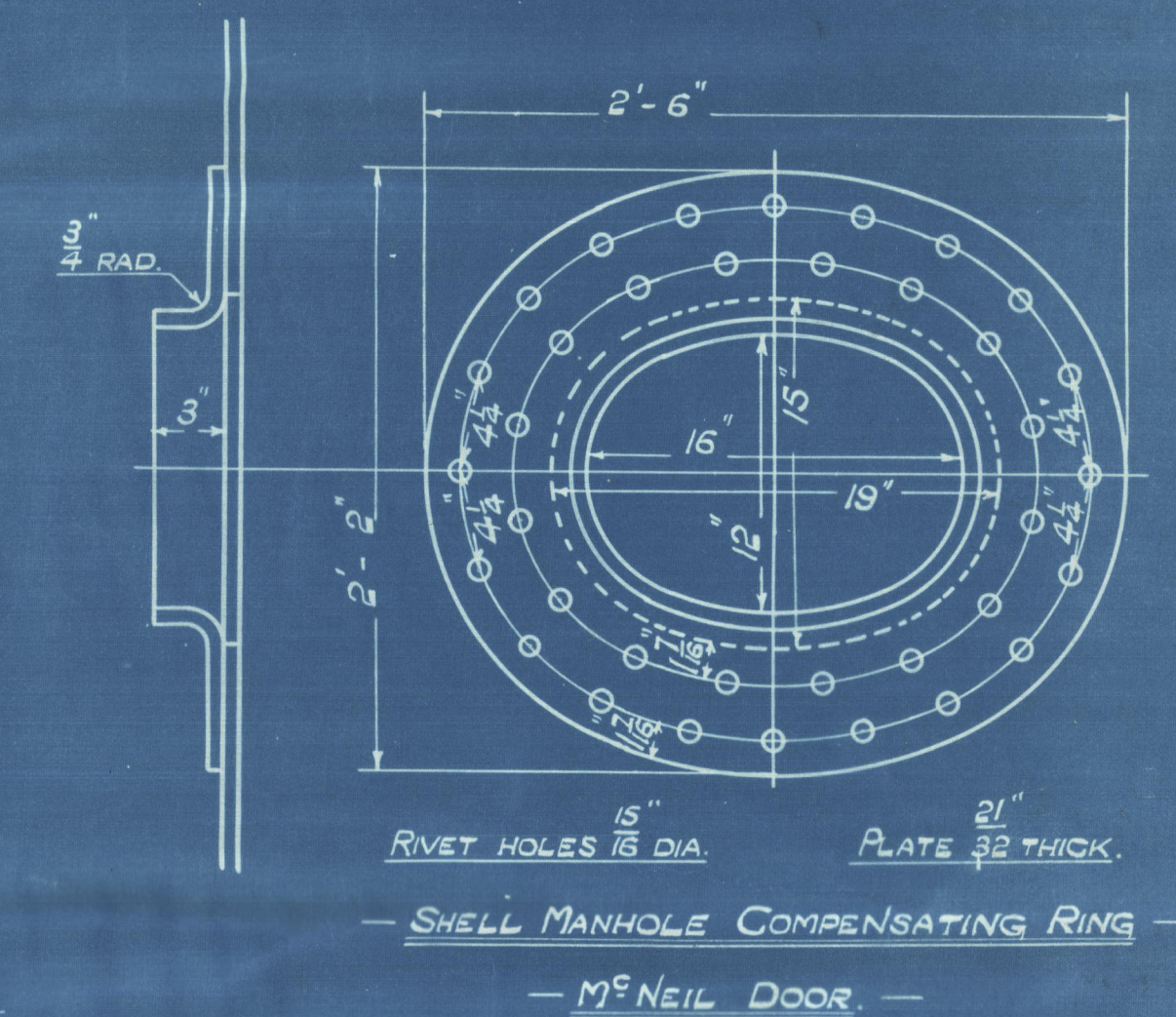
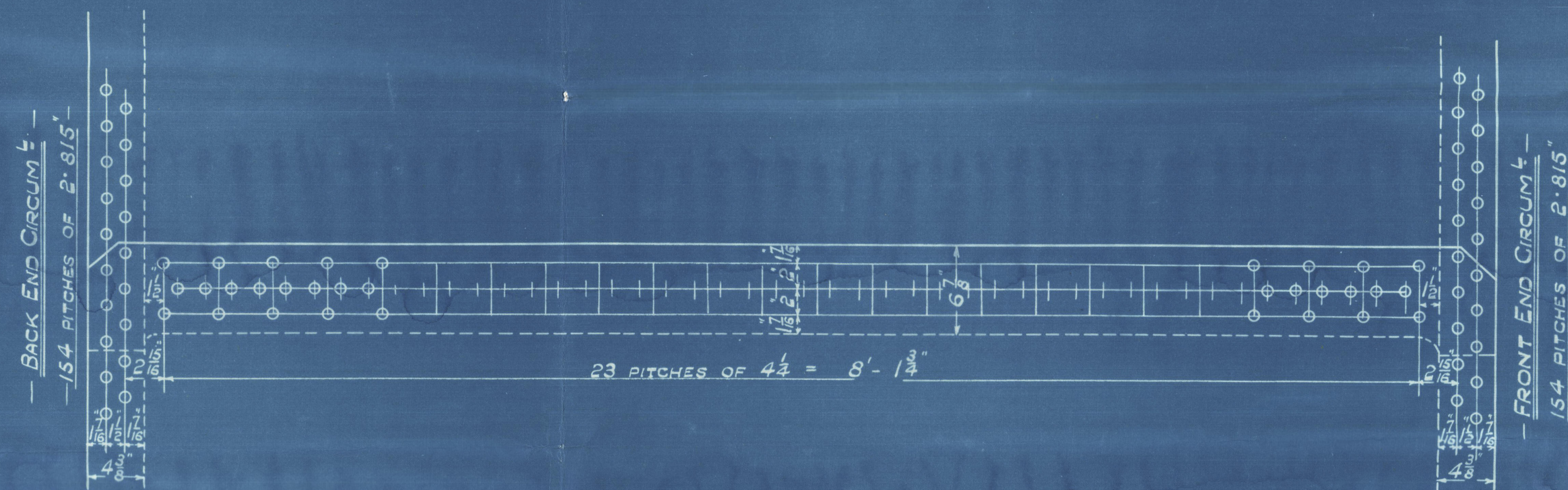


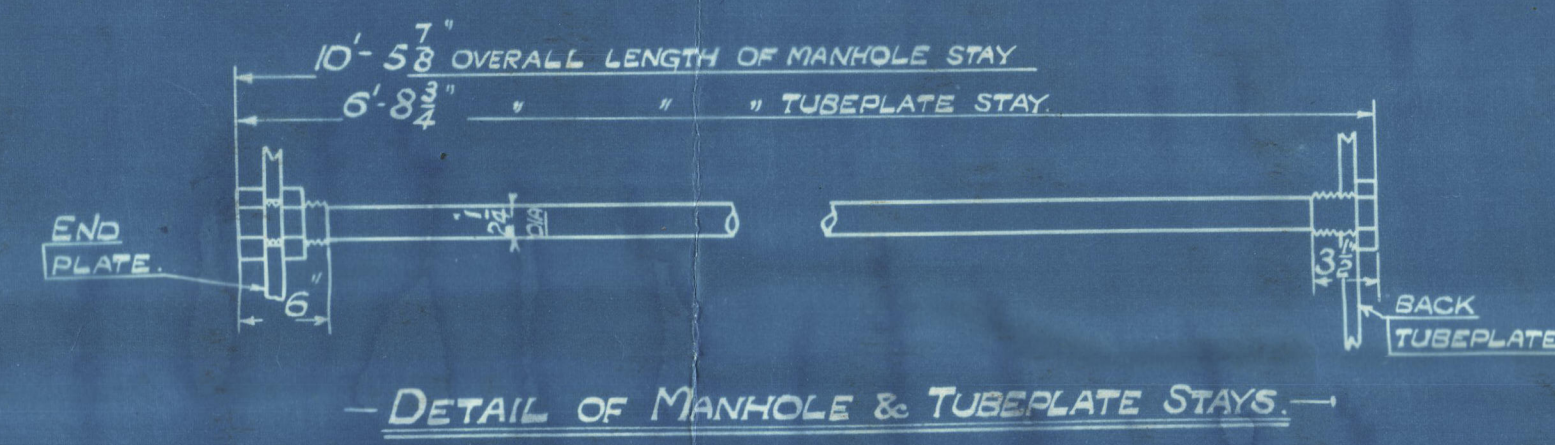
SURFACES.		ONE BOILER.
TUBES.	776	#
FIREBOX TOP AND SIDES.	80	"
" BACK.	46	"
" TUBEPLATE.	28	"
FURNACES.	70	"
TOTAL HEATING SURFACE.	1000	#
GRATE AREA (S-S BARS).	37.8	"
TUBE AREA.	6.47	"
WATER AREA.	100	"
STEAM SPACE.	220	#
GRATE AREA : HEATING SURFACE.	1 : 26.45	
" : TUBE.	1 : 20.5	
" : WATER.	5.84 : 1	
" : STEAM SPACE.	1 : 2.64	
% BOILER ABOVE FIREBOX.	31.2	
WEIGHT OF WATER.	13 1/2	TONS

- RIVETING -		
	LONG	END
RIVET HOLE DIA.	15	16
PITCH.	4 1/2	2 8/15
% PLATE.	77.9	56.7
% RIVET.	78.6	59.4
% COMBINED.	78.1	

- LIMITS OF TENSILE STRENGTH & MATERIAL -		
SHELL.	29 TO 33 TONS	SIEMENS MARTIN STEEL
GIRDERS.	28 " 32 "	
OTHER PLATES.	26 " 30 "	
FURNACES.	26 " 30 "	
MAIN STAYS.	28 " 32 "	
SCREWED STAYS.	26 " 30 "	
RIVET BARS.	26 " 30 "	



TUBEPLATE
& MANHOLE STAYS
2 1/2" DIA.
ENDS SHELLED TO 2 1/2" DIA.
& SCREWED 5 THDS PER INCH.
OUTSIDE NUT 2 1/2" DEEP
INSIDE NUT 1 1/2" DEEP.



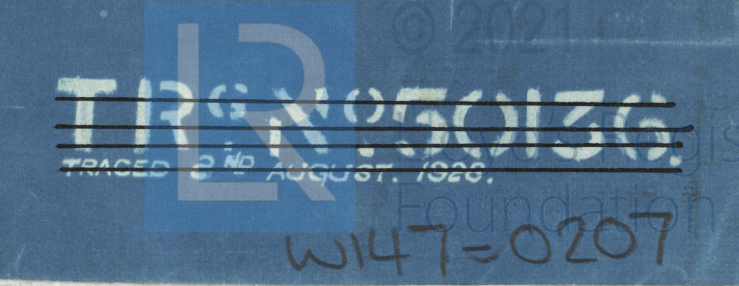
- FIREBOX STAYS - STEEL -				
POSITION	MARK	DIA.	(DIA-267)	SCREWED THDS/INCH.
BACK, TOP & SIDES.	0	1 1/2	1.52	9
" WIDE SPACE & TOP ROW.	0	1 1/2	1.844	9
" TOP CORNER.	0	1 1/2	2.199	9

ALL FIREBOX STAYS SCREWED THRO' BOTH PLATES AND NUT FITTED AT EACH END.
ALL 1 1/2" NUTS 2" DEEP EXCEPT ON GIRDER TOPS WHERE THE OUTSIDE NUTS ARE 1 1/2" DEEP.
ALL 1 1/2" x 1 1/2" NUTS 5" DEEP.



DONKEY BOILER
ONE OFF EACH CONT N°
CONT N° 894-895 CONT N° 894 DONKEY BOILER A
- WORKING PRESSURE 110 LBS. PER SQUARE INCH -
- TEST 215 " " " " " "
- TO PASS LLOYDS SURVEY -
- SCALES 1' & 1 1/2" = ONE FOOT -

O.T.33671



GLASGOW

DAVID ROWAN & CO. LTD

DONKEY BOILER N^o 894A

WP-110LBS

DUPLICATE OF N^o 894
(now renumbered N^o 374)

AND OF N^o 895

TO BE FITTED WITH

ENGINES & MAIN BOILERS

N^o 895

IN

LITHGOWS Lth Sth N^o 823

N^o 18325

LLOYD'S TEST

21.5 LBS

WP-110LBS

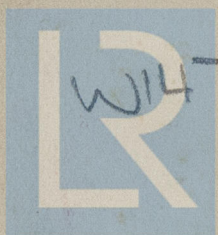
L.C.D.

12-6-29

Bahadur

GLASGOW REPORT No. 49587

Feb. 19089.



© 2021
W147-0207

Lloyd's Register
Foundation