

"Lufetian" as built

629.

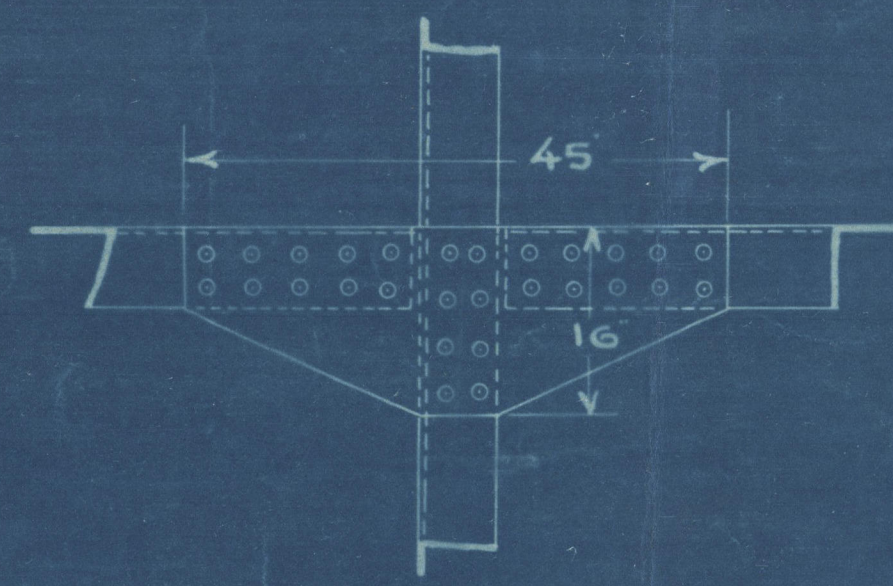
YARD-PROFILE.

SCALE 1/8" = 1'00"

DIMENSIONS: 365'0" x 51'3 1/2" x 29'6" MDL UPPER DECK

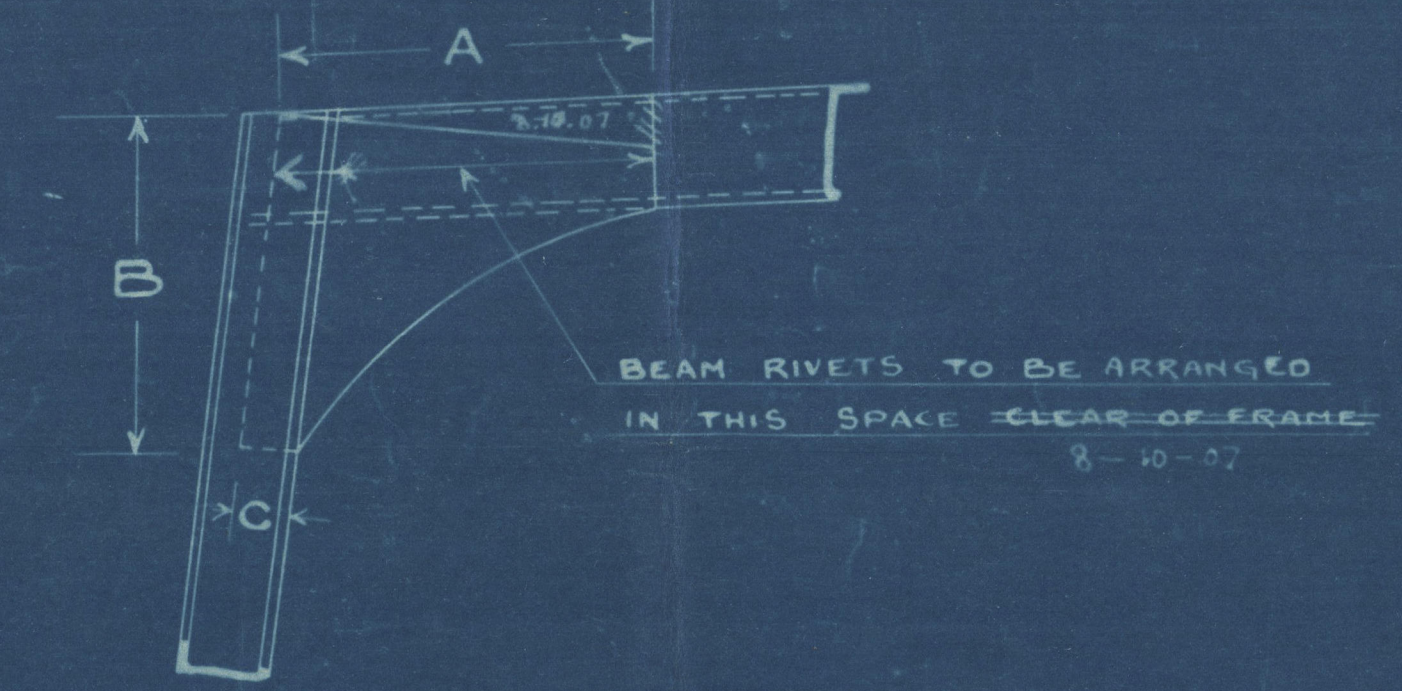
1ST NO. 102 44 2ND NO. 370 57

DETAIL OF HALF DIAMOND PLATES ON WEB FRAMES



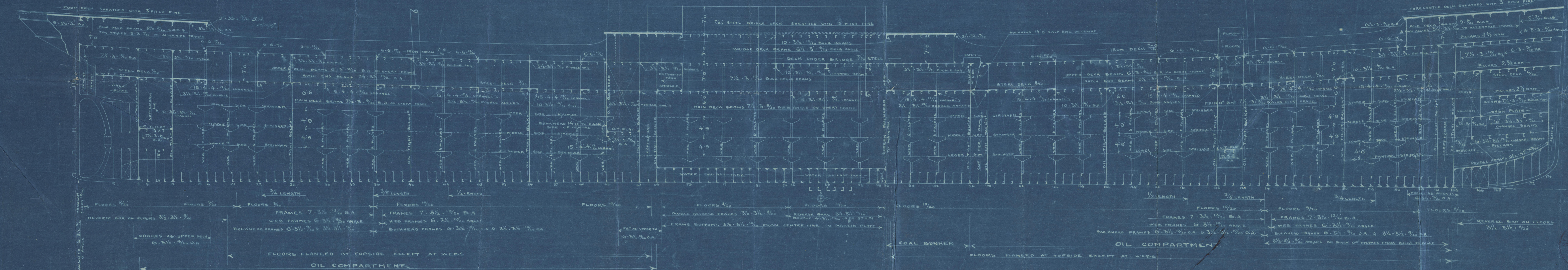
NOTE:- BULKHEADS N° 26.- 96.- 135.- 150.

ABOVE MAIN DECK ARE NOT CARRIED TO SHIPS SIDE BUT ONLY EXTEND FROM CENTRE TO TRUNK SIDE. WEBS FITTED AT SHIPS SIDE BETWEEN MAIN & UPPER DECK IN WAY OF THESE BULK



KNEES AT SHIPS SIDE

DECK	SIZE OF BEAM	SIZE OF FRAME	A	B	C	THICKNESS	RIVETS PER INCH	FRAME DIAM.
POOP DECK	9 B.A. & 8 1/2 BULB	6 3/4 x 1/20 O.A.	21 1/8	23 3/8	4 1/2	8/20	5	5 7/8
	8 1/2 x 1/20 BULB	7 3/4 x 1/20 O.A.	20 7/8	23 3/8	4 1/2	8/20	5	5 7/8
BRIDGE DECK	6 1/2 x 3/4 x 1/20 B.A.	7 3/4 x 1/20 O.A.	15 1/2	18	4 1/2	9/20	5	5 3/4
	6 1/2 x 3/4 x 1/20 B.A.	6 3/4 x 1/20 O.A.	16 1/2	18	4 1/2	9/20	5	5 3/4
	10 x 3/2 x 1/20 B.A.	7 3/4 x 1/20 O.A.	25	27 1/2	4 1/2	10/20	6	6 7/8
	10 x 3/2 x 1/20 B.A.	6 3/4 x 1/20 O.A.	26	27 1/2	4 1/2	10/20	6	6 7/8
FORECASTLE DECK	9 x 1/20 BULB	7 FRAME	22 1/4	24 3/4	4 1/2	9/20	6	6 7/8
	9 x 1/20 BULB	6 FRAME	23 1/4	24 3/4	4 1/2	9/20	6	6 7/8
	8 x 1/20 BULB	7 FRAME	19 1/2	22	4 1/2	8/20	5	5 7/8
	6 x 3/4 x 1/20 B.A.	7 FRAME	15 1/2	18	4 1/2	9/20	5	5 3/4
	6 x 3/4 x 1/20 B.A.	WEB FRAME	21	21	4 1/2	9/20	5	5 3/4
UPPER DECK	7 1/2 x 3/4 x 1/20 B.A.	7 FRAME	18 1/4	20 3/4	4 1/2	10/20	5	5 3/4
	7 1/2 x 3/4 x 1/20 B.A.	WEB FRAME	24	24	4 1/2	10/20	6	6 7/8
	9 1/2 x 3/4 x 1/20 B.A.	WEB FRAME	24	24	4 1/2	10/20	6	6 7/8
	9 1/2 x 3/4 x 1/20 B.A.	7 FRAME	26 1/2	28 1/2	4 1/2	9/20	7	7 7/8
	12 x 3/4 x 3/4 x 1/20 CHANNEL	WEB FRAME	30	30	4 1/2	12/20	7	7 7/8
	12 x 3/4 x 3/4 x 1/20 CHANNEL	7 FRAME	30 1/2	33	4 1/2	12/20	8	8 7/8
	7 1/2 x 3/4 x 1/20 B.A.	7 FRAME	20	22 1/2	4 1/2	9/20	5	5 7/8
	7 1/2 x 3/4 x 1/20 B.A.	WEB FRAME	30 1/2	36	11 7/8	9/20	10	9 7/8
MAIN DECK	10 x 3/2 x 1/20 B.A.	7 FRAME	27 1/2	30	4 1/2	9/20	7	7 7/8
	12 x 3/4 x 3/4 x 1/20 CHANNEL	WEB FRAME	30	36	10	12/20	10	10 7/8
	12 x 3/4 x 3/4 x 1/20 CHANNEL	7 FRAME	33 1/2	36	4 1/2	12/20	9	9 7/8
	15 x 4 x 4 x 1/20 CHANNEL	WEB FRAME	30	36	10	15/20	10	10 7/8
FORE PEAK FLAT	7 1/2 x 3/4 x 1/20 B.A.	7 FRAME	20	22 1/2	4 1/2	9/20	5	5 7/8
PUMP ROOM FLAT	7 1/2 x 3/4 x 1/20 B.A.	7 FRAME	20	22 1/2	4 1/2	9/20	5	5 7/8
PANTING BEAMS	10 x 3/4 x 3/4 x 1/20 CHANNEL	7 FRAME	22 1/2	25	4 1/2	9/20	6	6 7/8



SIR JAMES LAIN & SONS LTD.
DRAWING OFFICE
4927
BRIGHTON VICE, ENGLAND

SIR JAMES LAIN & SONS LTD.
DEPTFORD YARD
SUNDERLAND

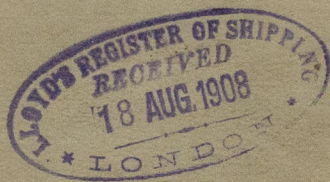
Luteban.

No 629.

Sir - J. Loring & Son

Profile as vessel
Leill.

see report No 23802.



W1147-0167



© 2021

Lloyd's Register
Foundation