

16.2.07.

MIDSHIP SECTION.

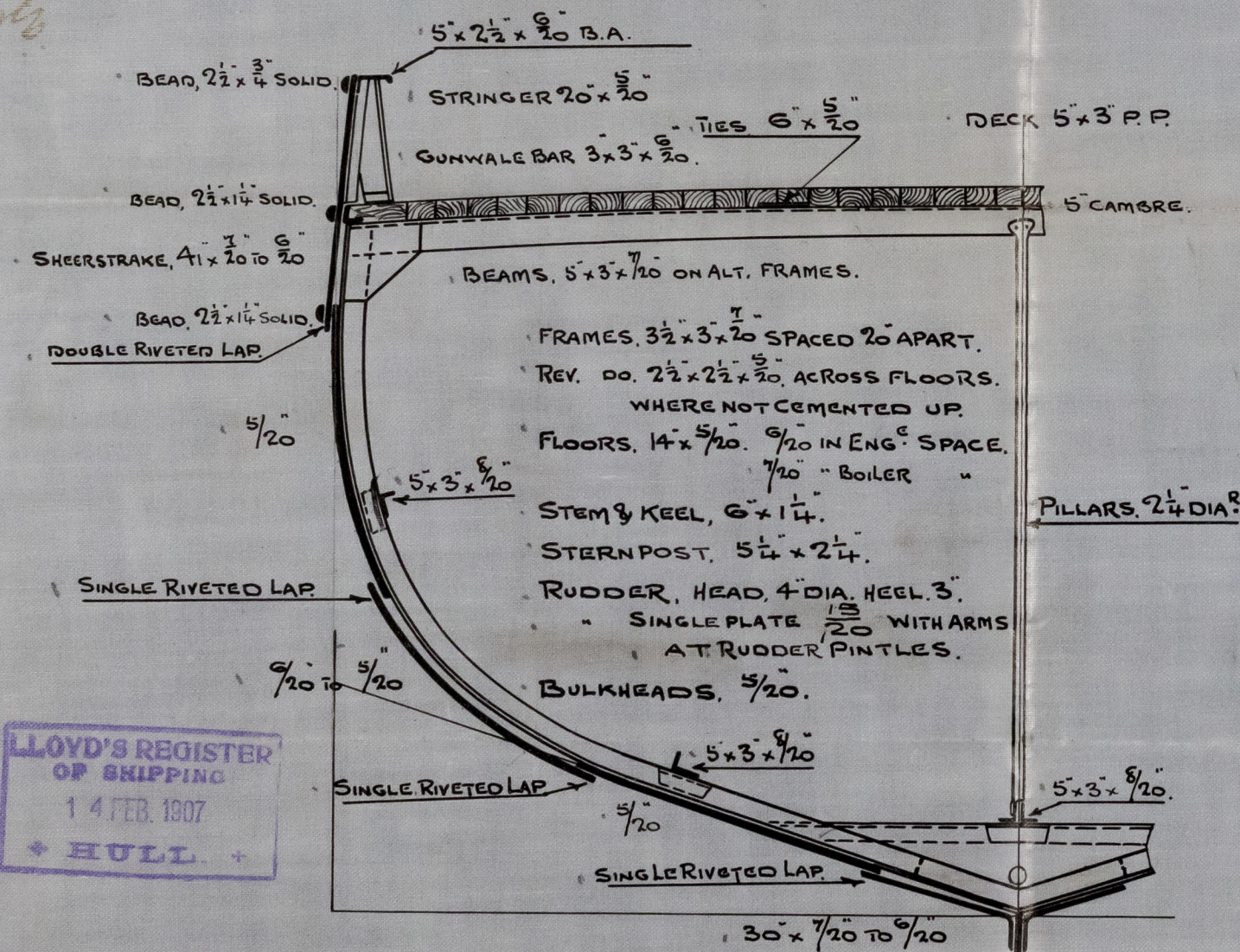
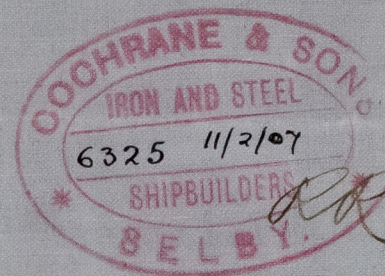
S. S. N^o 413.

DIMNS 82'-0" x 18'-3" x 9'-0" MOULDED.

TO CLASS 100 A.1. FOR FISHING PURPOSES.

DECK PLATED OVER IN WAY OF MACHINERY SPACE.

SCALE $\frac{1}{2}$ " = ONE FOOT.



LLOYDS NUMERALS.

$\frac{1}{2}$ BREADTH. 9.08.

$\frac{1}{2}$ GIRTH. 14.63.

DEPTH. 9.37.

1ST NUMBER 33.08.

RULE LENGTH. 81.06.

2ND NUMBER. 2681.46.

PROPORTIONS.

DEPTHS TO LEN. = 8.65.

BREADTHS - " = 4.46.

EQUIPMENT.

2 BOWER ANCHORS, 3 CWTs. EACH EX. STOCK.

1 " " 1 3/4 " " "

60 FATHOMS, 1 1/2" CHAIN CABLE.

60 " 5" HAWSER.

60 " 2 1/2" WARP.

Messrs. Cochran & Sons
No. 413.

Midship Section.

S/S Fraserburg
Hull Report No.

19.5.04



MIDSHIP SECTION.

2 No 413

Deck plated over in May 1904

to class 100 A 1 for fishing

SCALE 5.000000

SCALE 5.000000

2.5 x 3.0 x 0.5

2.5 x 3.0 x 0.5

2.5 x 3.0 x 0.5

2.5 x 3.0 x 0.5