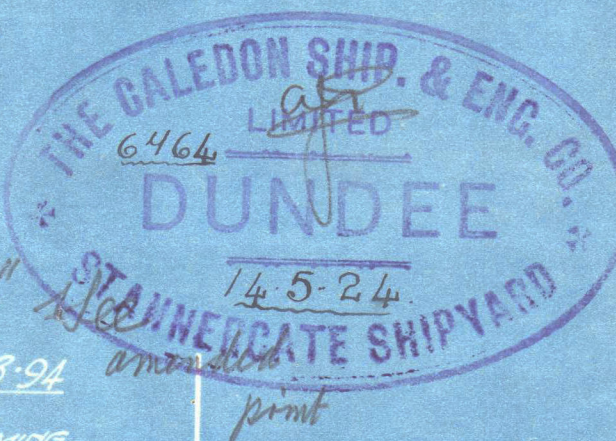


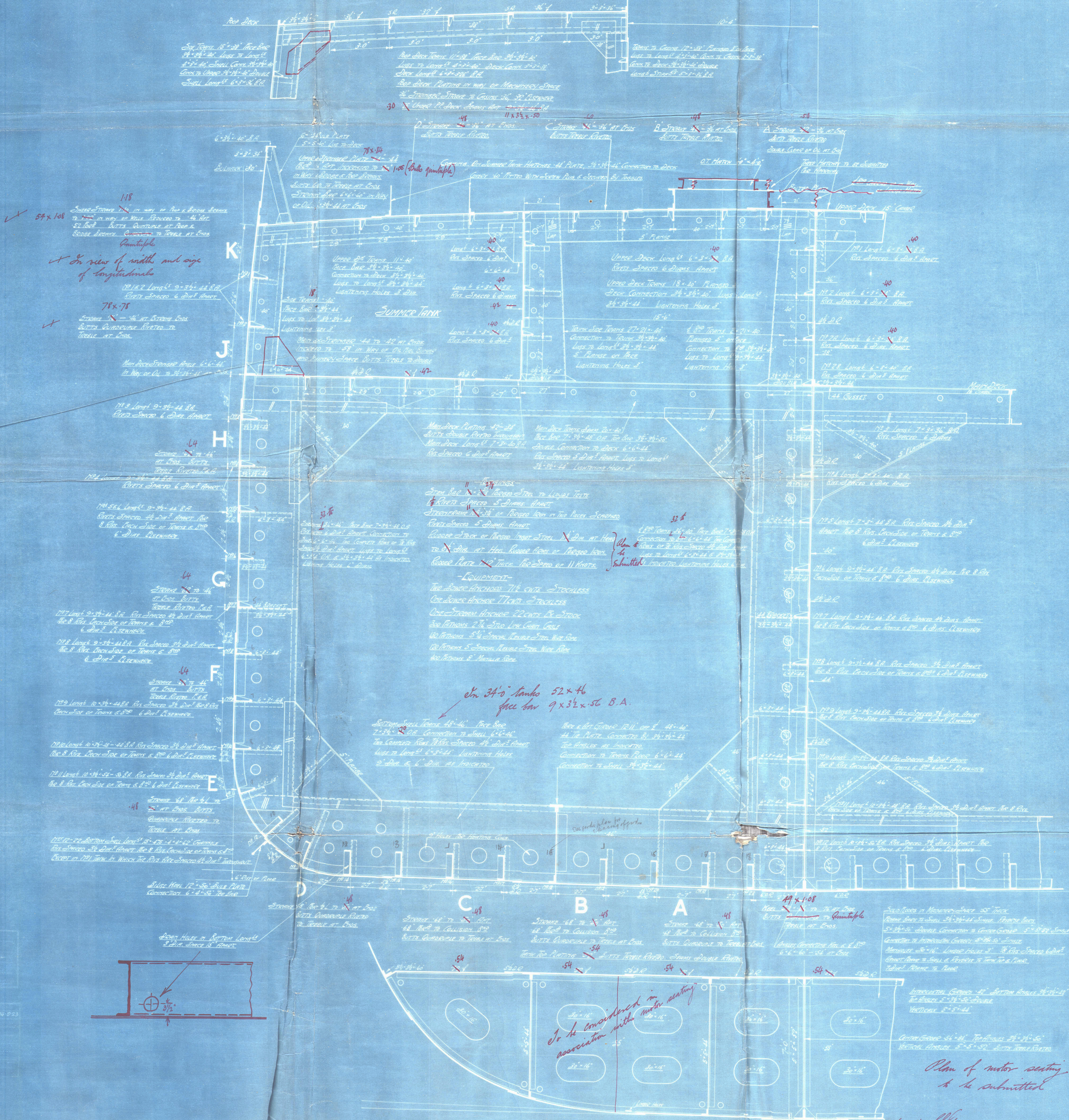
Lloyd's
Stamp
22/5/24

T.S.M.V. NO. 294. PROPOSED TANKER. MIDSHIP SECTION.

SCALE 1/2" = 1 FOOT



PARTICULARS: Length Between Perpendiculars 440'-0"
Beam at Main Deck 52'-0"
Depth Main Deck to Upper Deck 35'-0"
8+2 = 42320 5 = 13.94
Built on Lakerwood System of longitudinal framing
Classified "100" by Lloyd's "Carrying Oil in Bulk"



J. GARDNER
J. GARDNER
12/5/24

30P LLOYDS 14-223

to be considered in
association with motor setting

Plan of motor setting
to be submitted

SECTION THRU DOUBLE BOTTOM IN MACHINERY SPACE

Caledon & B. M. Co.

T.S.M.V. 294

Midship Section.

①
"As Fell" Dem 8538.
M.V. ^{ex}"ATHELCHIEF"

XI 45- 0160



© 2020

Lloyd's Register
Foundation