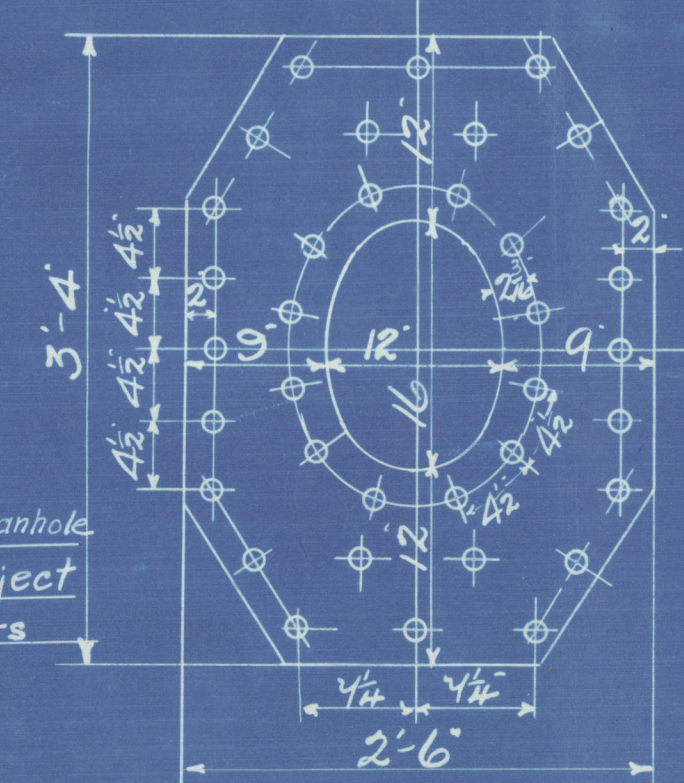


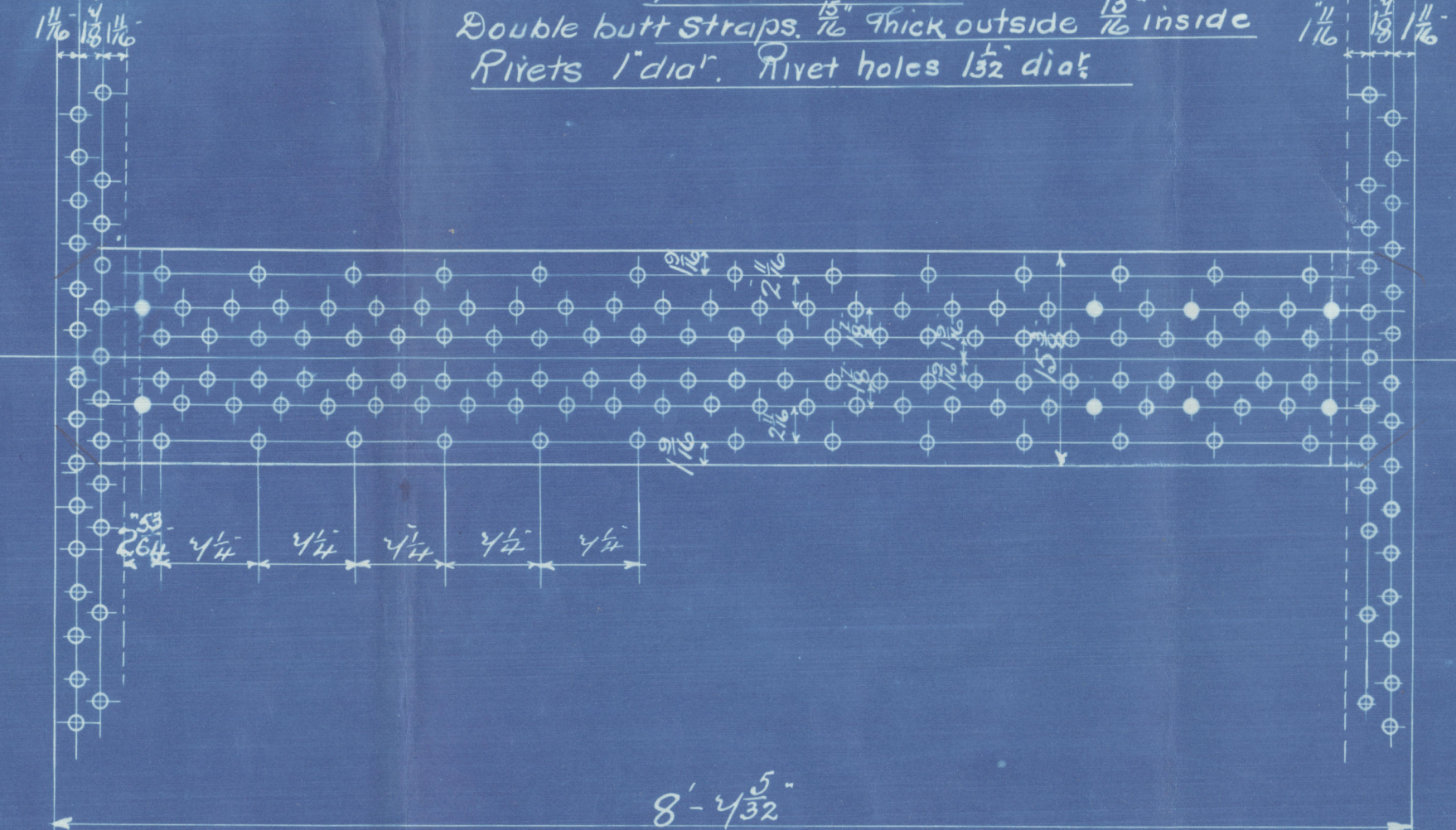
Diameter of Boiler 11'-6" outside
 Length of do. 9'-6" over plates
 Number of Tubes 138
 Length of do. 5'-11" between plates.
 Dia of do. 3 1/2" Area thro' Tubes
 Heating surface in Tubes 748 sq ft
 Total Heating Surface 980.
 Fire bar Surface
 Dia of Safety Valve
 Cubic feet of Steam Space. 6' above C.C. Top. 197.
 Working pressure 180 lbs. Lloyds

Doubling plate 1/2" thick
 Rivets 1" dia 1 1/2" hole
 Fitted outside shell with short axis
 Longitudinally
 Circumferential Seam 3/4" pitch
 1 1/2" dia rivets, 1 1/2" dia holes.
 7/8" Plate
 7/8" Rivet



Note: Studs on manhole doors are not to project thro' nuts when nuts are nipped up.

Longitudinal Seam 1/2" pitch.
 7/8" Plate 85.4
 7/8" Rivet 91.4.
 Double butt Straps 7/8" thick outside 1/2" inside
 Rivets 1" dia. Rivet holes 1 1/2" dia

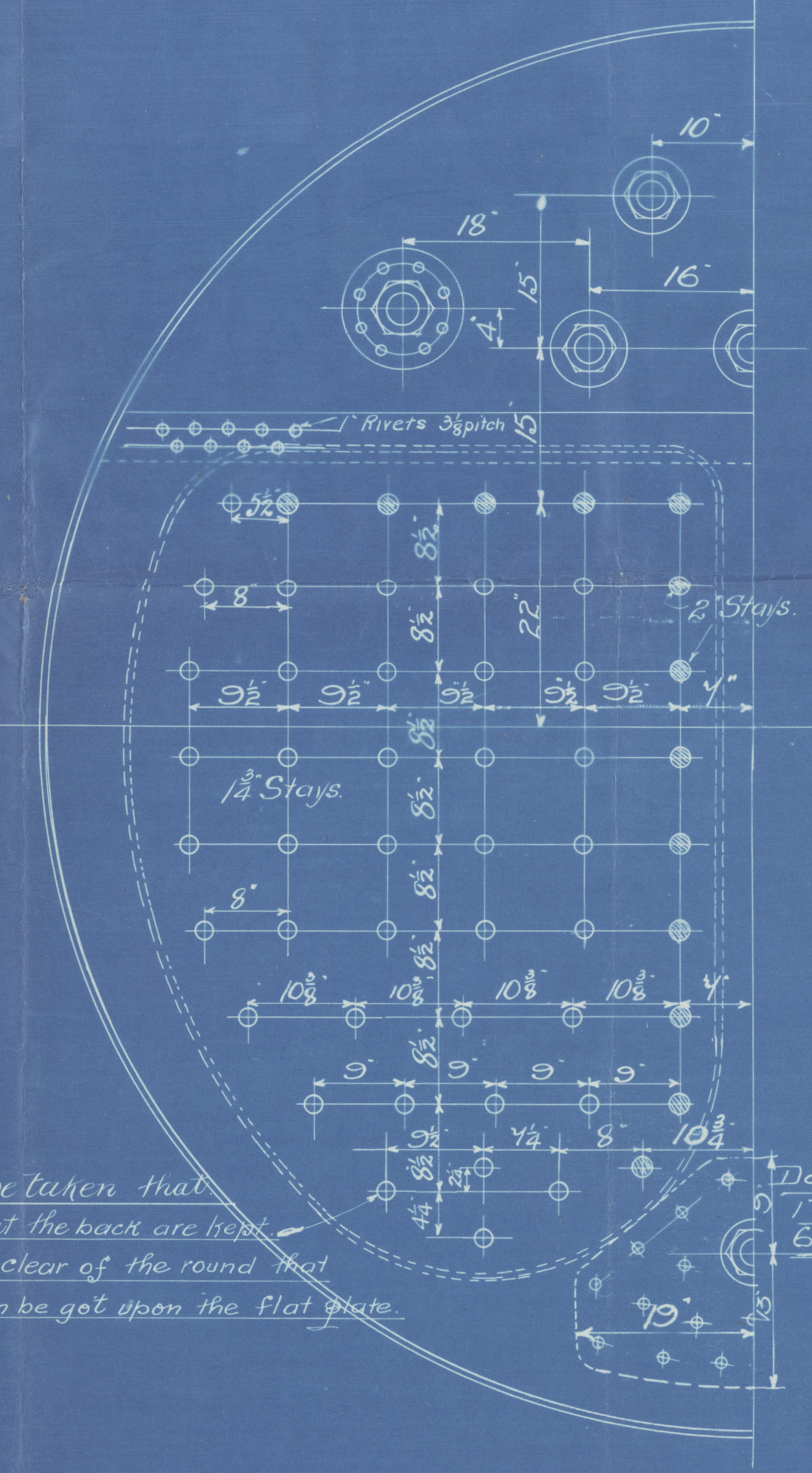
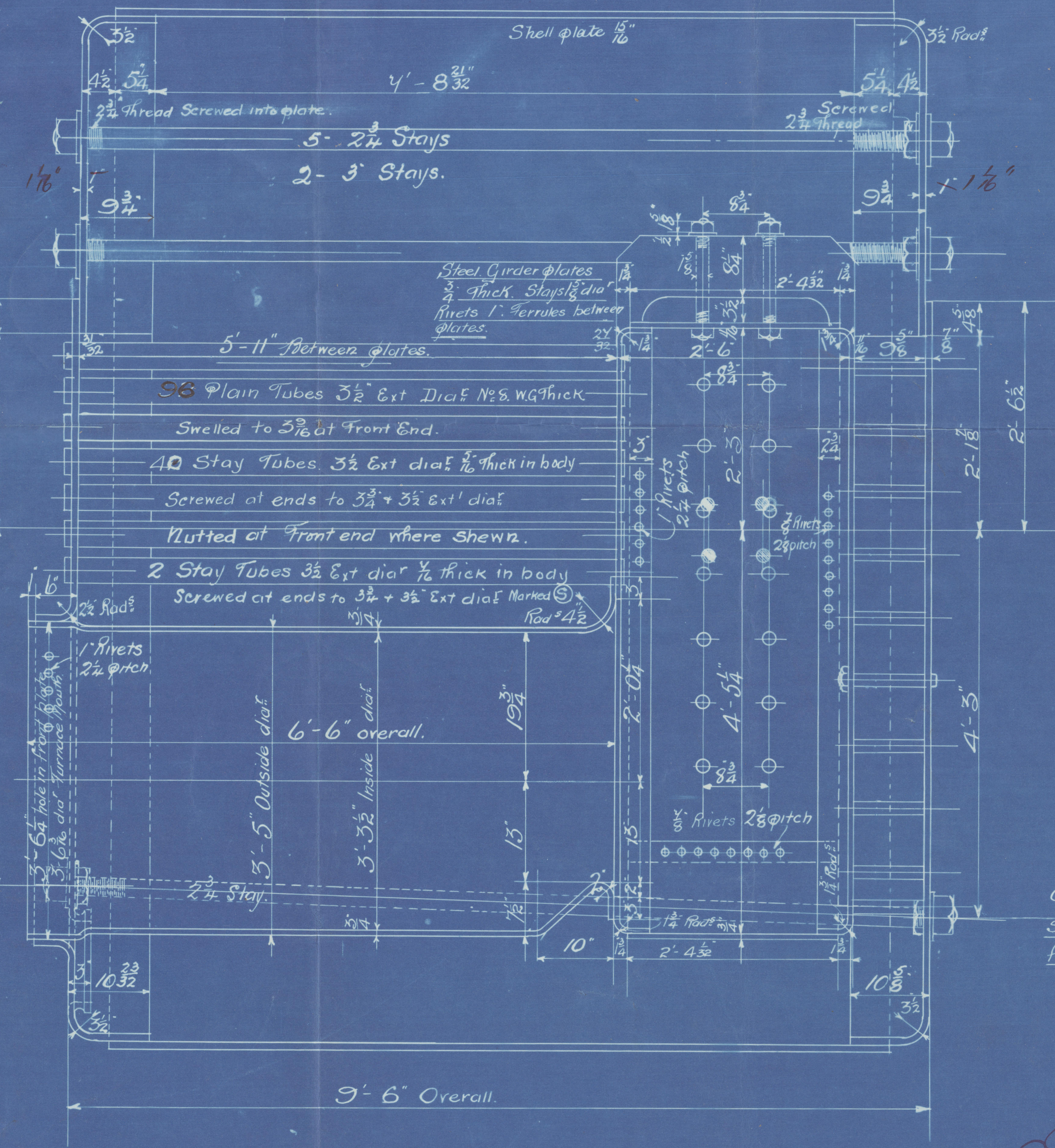
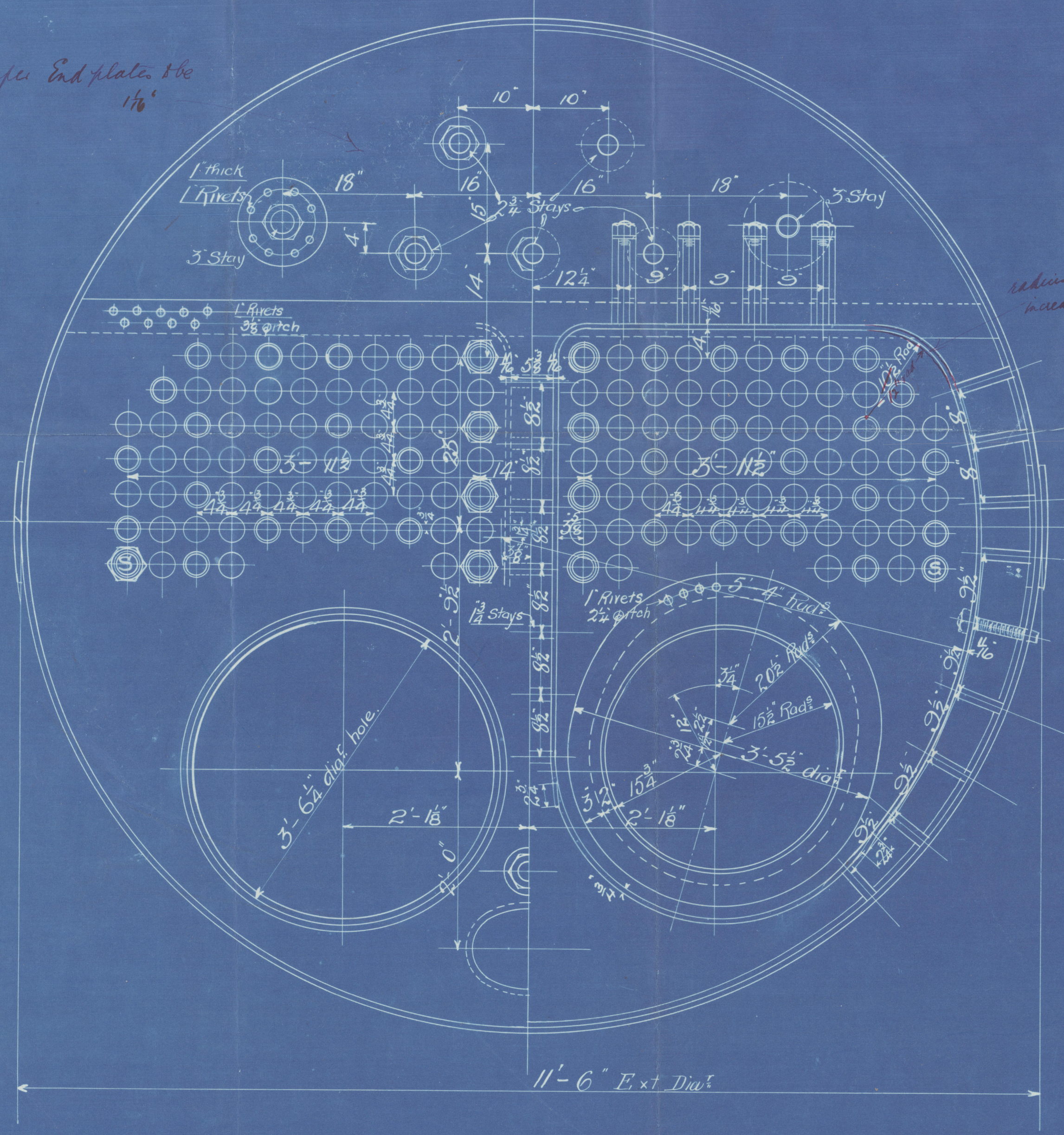


Note: The plates, rivets & stays of Steel by the Siemens Martin process.
 all rivet holes drilled throughout the boiler. Those in shell after the plates are bent.
 All flanged plates to be annealed after the plates are bent.
 Stays are not to be welded. Tubes are of iron.
 The tensile strength of the shell plates & butt straps to be between 29 & 33 tons per sq inch.
 The combustion chamber stays are screwed into both plates.
 No washers inside C.C.
 No Nuts on C.C. Stays outside boiler.

Particulars of Staying

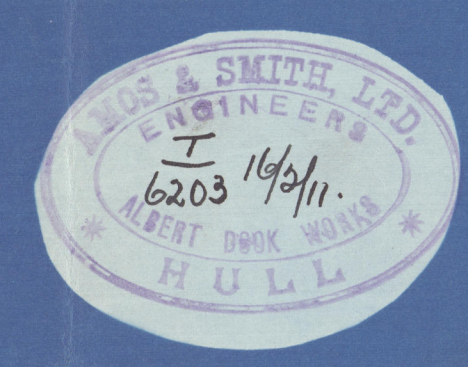
Stay	Dia	No of threads per inch.	Area at bottom of thread.
Steam Space Stays	3"	6	6.10 D
" "	2 1/2"	6	5.055 D
Bottom Stays	2 1/4"	6	5.055 D
C. C. Stays	2"	8	2.66 D
" "	1 3/4"	10	2.066 D
Stay Tubes.	3 1/2"	9	2.364 D
C. C. Stays	1 1/2"	10	1.96 D

Upper End plate 1 1/2"



Care to be taken that
 C.C. Stays at the back are kept
 sufficiently clear of the round that
 full nuts can be got upon the flat plate.

20.2.11
 20.2.11



18/11
 20/11

3 STEEL BOILERS N° 1978-9 & 80

10311

TITLE Steel Boilers
 FOR WH...
 DATE 18/2/11
 ORD No 1978-9 & 80
 MADE IN...
 W1443-00711/2

© 2014 43-0071 3 3/2

From AMOS & SMITH, Ltd., HULL.

Enclosure for

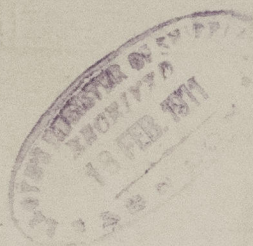
Mass Lloyd's Surveyors

Hull

Amos Smith

Boilers N^o. 1978-9-1980

W. P. = 180 lbs.



$\frac{5}{8}$ Faci Hull Rpt No. 24221

REMAIN



© 2021

Lloyd's Register
Foundation

W1443-0071