

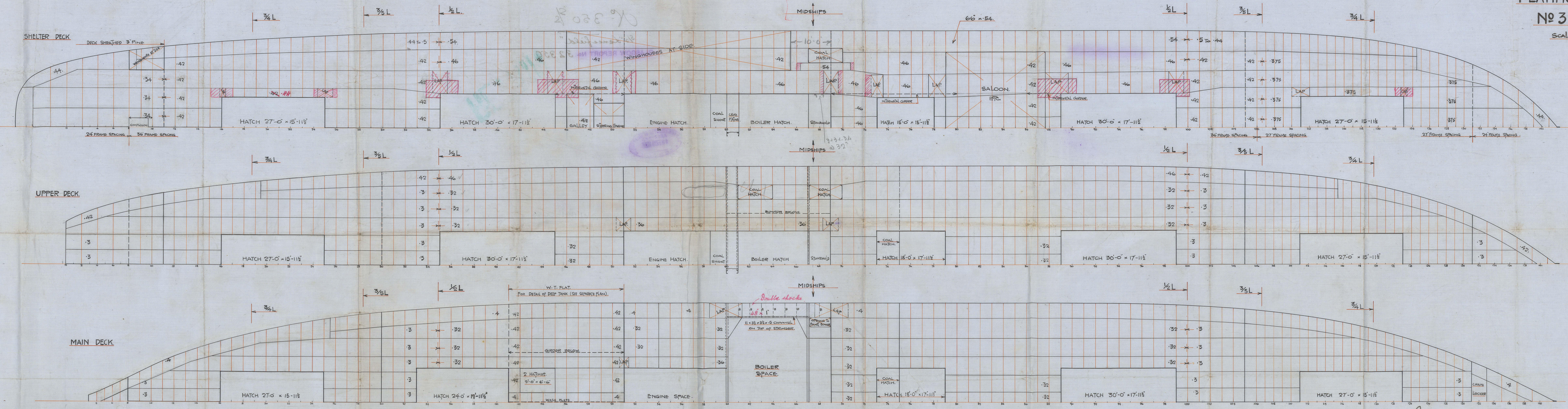
27.2.12  
6.9.12

*Handwritten:*  
I think I  
and I  
2008  
All Decks steel

# SHELTER, UPPER & MAIN DECK PLATING PLANS.

No 350 SS.

SCALE 1/8" = 1 FT.



SHELTER DECK.  
STRINGER PLATE 54 x 54 TO 35 x 44 AS PER PLAN.  
STRINGER BUTTS LAPPED & TRIPLE RIVETED FOR 1/2 L.  
DECK PLATING BUTTS LAPPED & DOUBLE RIVETED FOR 1/2 L.  
TO SINGLE AT ENDS.  
ALL LANDINGS SINGLE RIVETED.  
(Scuttlings are in excess of Rules)

UPPER DECK. (NOT REQUIRED BY RULES)  
STRINGER PLATE 47 x 46 TO 34 x 42.  
STRINGER BUTTS LAPPED & TRIPLE RIVETED FOR 1/2 L. DOUBLE AT ENDS.  
DECK PLATING BUTTS LAPPED & DOUBLE RIVETED FOR 1/2 L. DOUBLE AT ENDS.  
TO SINGLE AT ENDS.  
ALL LANDINGS SINGLE RIVETED.

MAIN DECK. (NOT REQUIRED BY RULES)  
STRINGER PLATE 47 x 46 TO 34 x 42.  
STRINGER BUTTS LAPPED & TRIPLE RIVETED FOR 1/2 L. DOUBLE AT ENDS.  
DECK PLATING BUTTS LAPPED & DOUBLE RIVETED FOR 1/2 L. DOUBLE AT ENDS.  
TO SINGLE AT ENDS.  
ALL LANDINGS SINGLE RIVETED.

*Handwritten:*  
C.B.  
27.2.12.





C. Cornwell & Co  
Deek Plans

N<sup>o</sup> 350  $\frac{1}{2}$

$\frac{1}{2}$  "Lancefield"

GLASGOW REPORT No. 32350



W1441-0086



© 2021

Lloyd's Register  
Foundation