

# BUILDER'S NO. 454-8. SMALL BOILER.

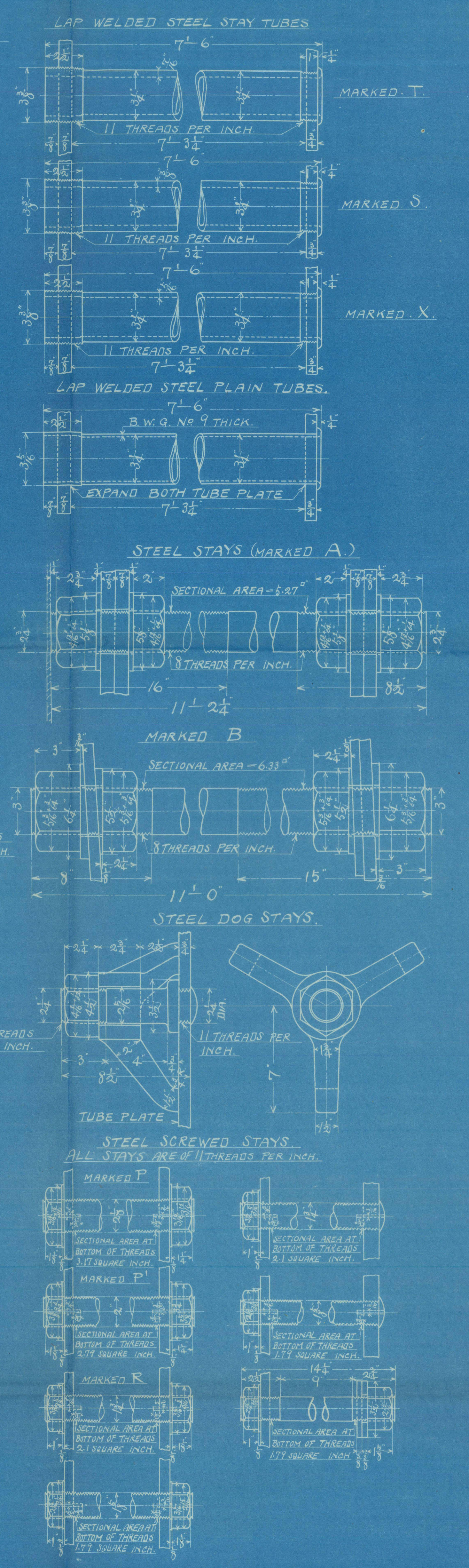
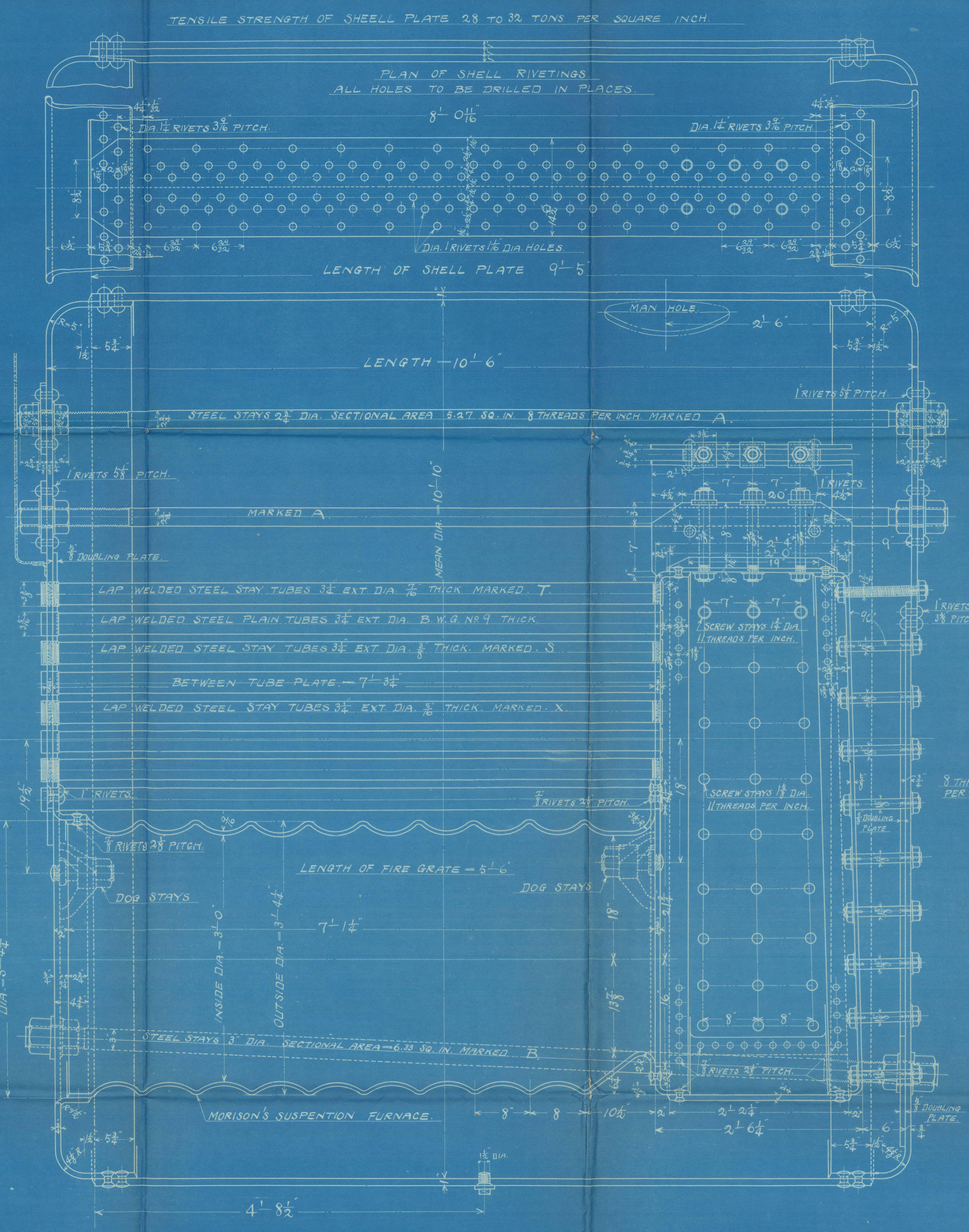
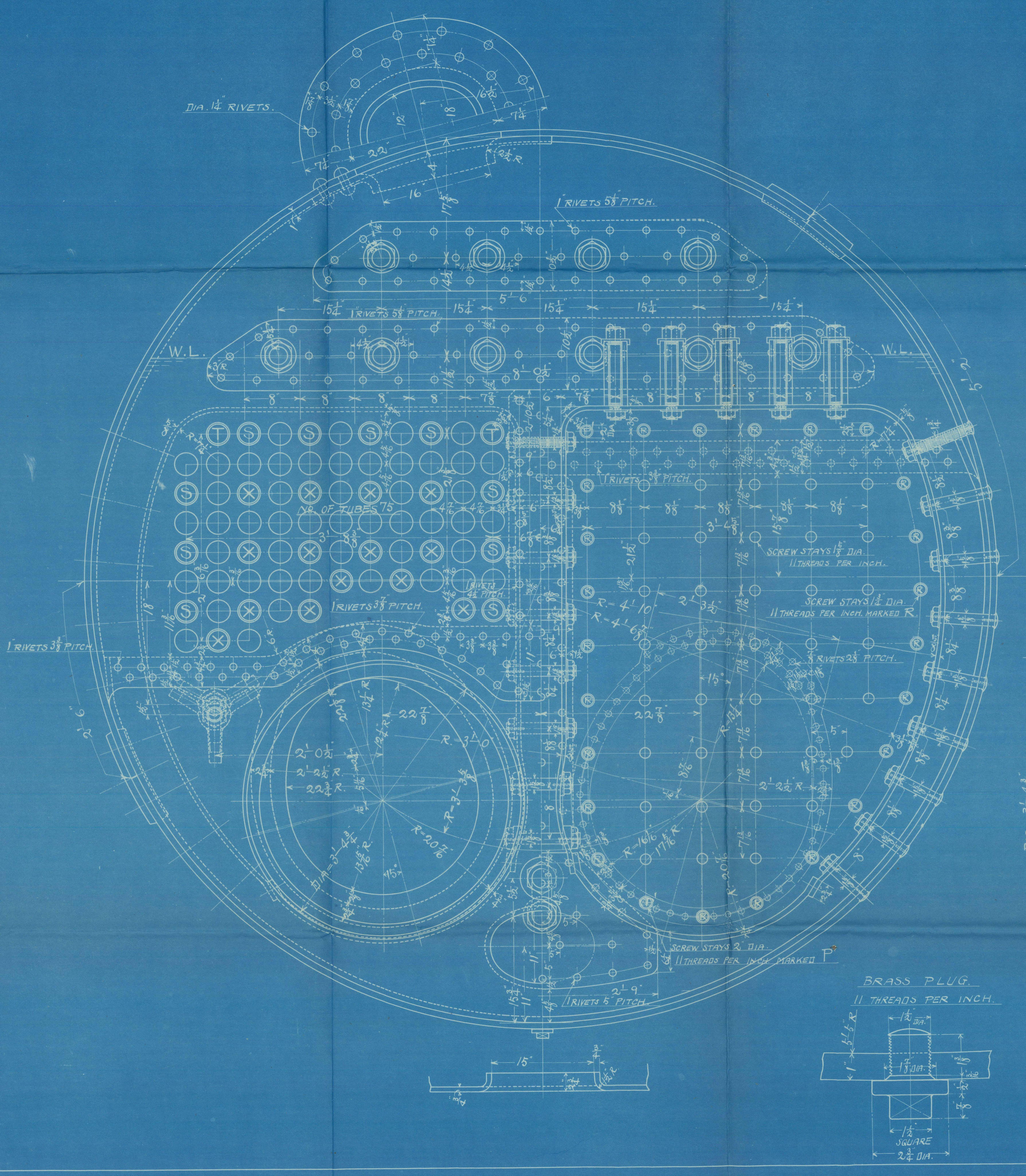
DIA. 10'-10" x 10'-6" LONG.

WORKING PRESSURE: 200 LBS.

SCALE: 1/2" = 1'-0"

HEATING SURFACE	927.458 <sup>50</sup> SQ. FT.
TUBES	74.532
FLUES	102.187
FIRE BOXES	27.802
BACK TUBE PLATES	1132.479
TOTAL	33.000
RATIO H/G	34.318
SECTIONAL AREA OF TUBES	6.541 <sup>50</sup> SQ. FT.
SECTIONAL AREA OF TUBES	1
GRATE AREA	5.045

TUBES  
98 STEEL PLAIN TUBES 3/4" EXT. DIA. B.W.G. NO. 9 THICK  
4 STEEL STAY TUBES 3/4" EXT. DIA. 1/2" THICK MARKED T  
20 STEEL STAY TUBES 3/4" EXT. DIA. 1/2" THICK MARKED S  
28 STEEL STAY TUBES 3/4" EXT. DIA. 1/2" THICK MARKED X  
150 IN ALL.



DRAWING NO. 77.



Kawasaki Dockyard  
No. 454  
S/s. EATERN MOON.  
SMALL BOILERS.  
Kobe Rpt. 2685

KAWASAKI DOCKYARD Co., LTD.

Builders No. 454.

Small boiler.

Drawing No.



RETAIN



© 2021

Lloyd's Register  
Foundation

W1435-0138