

No 2

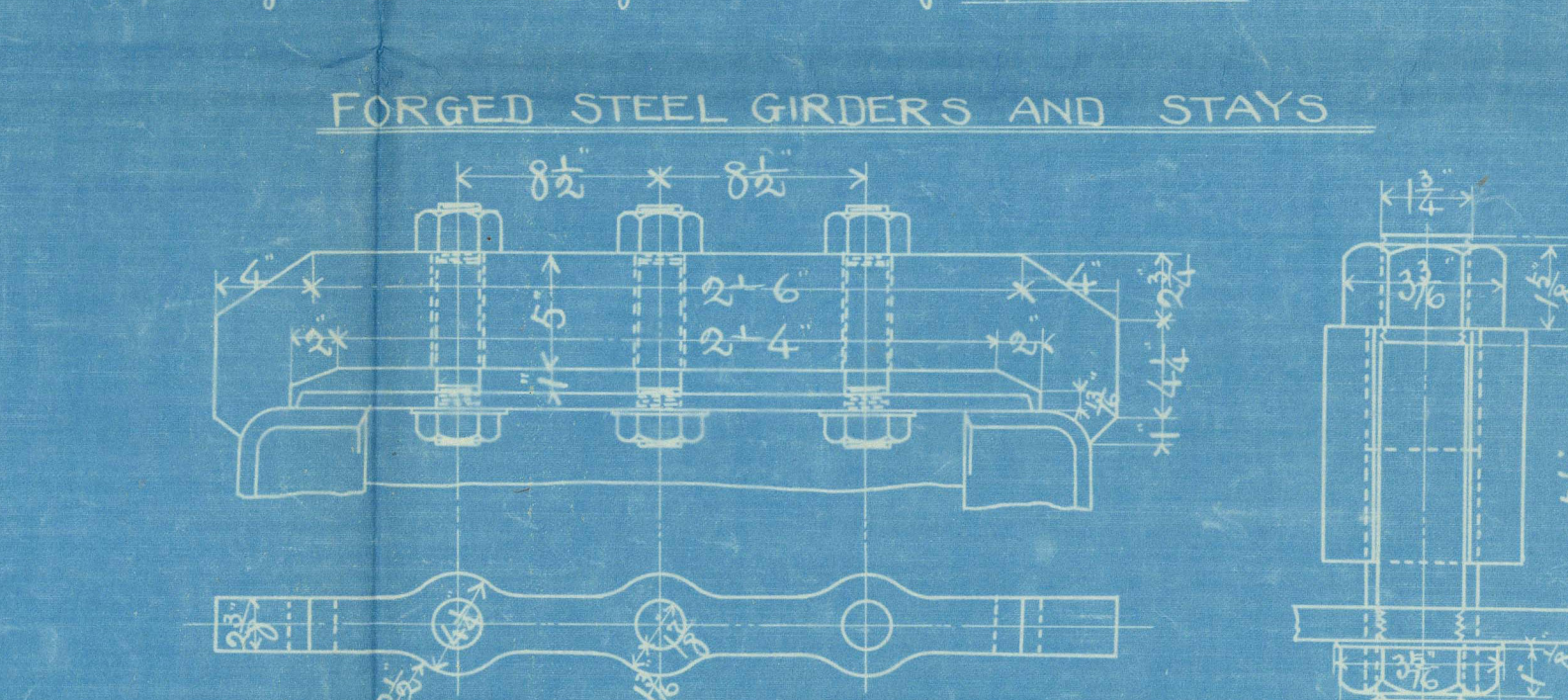
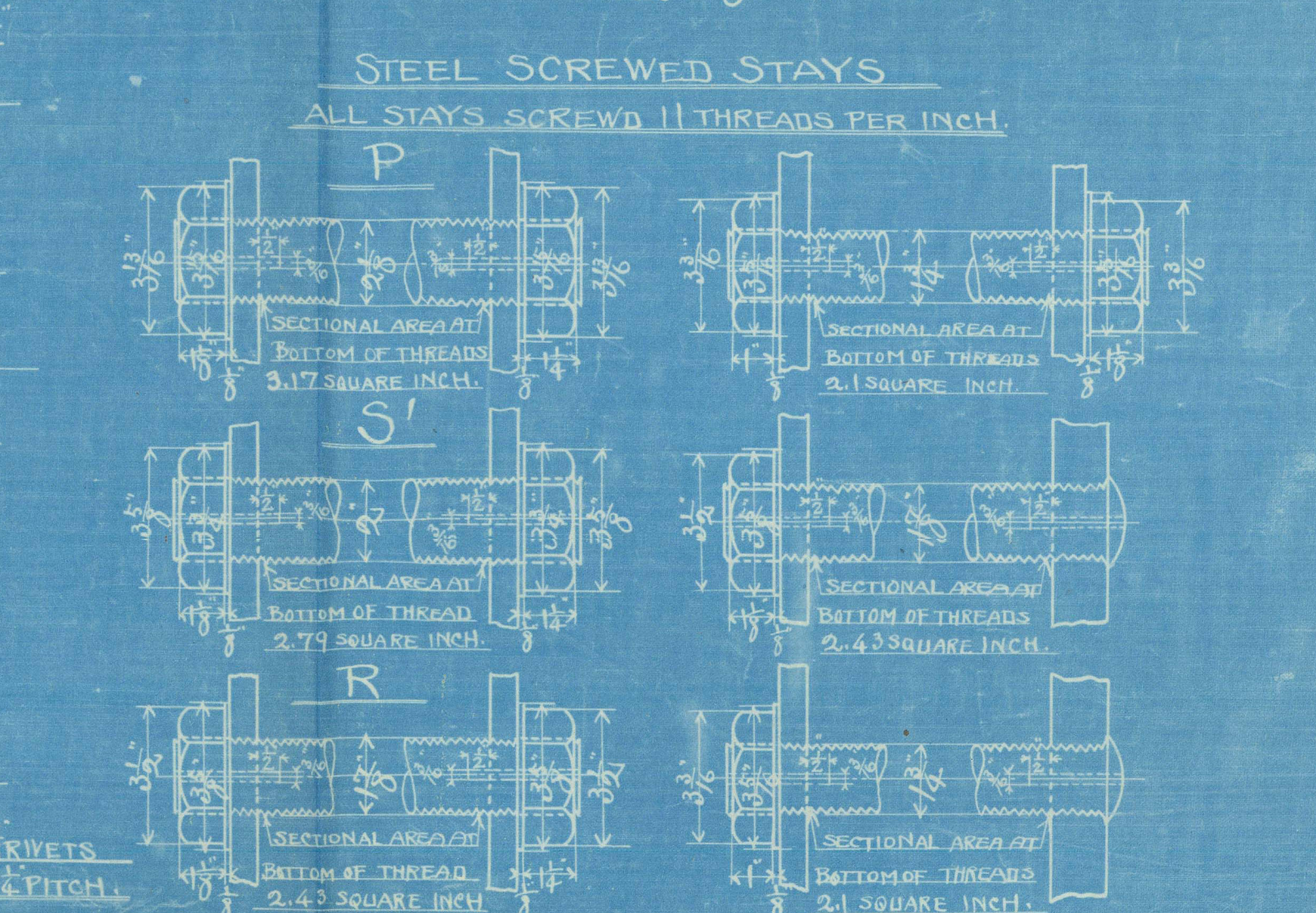
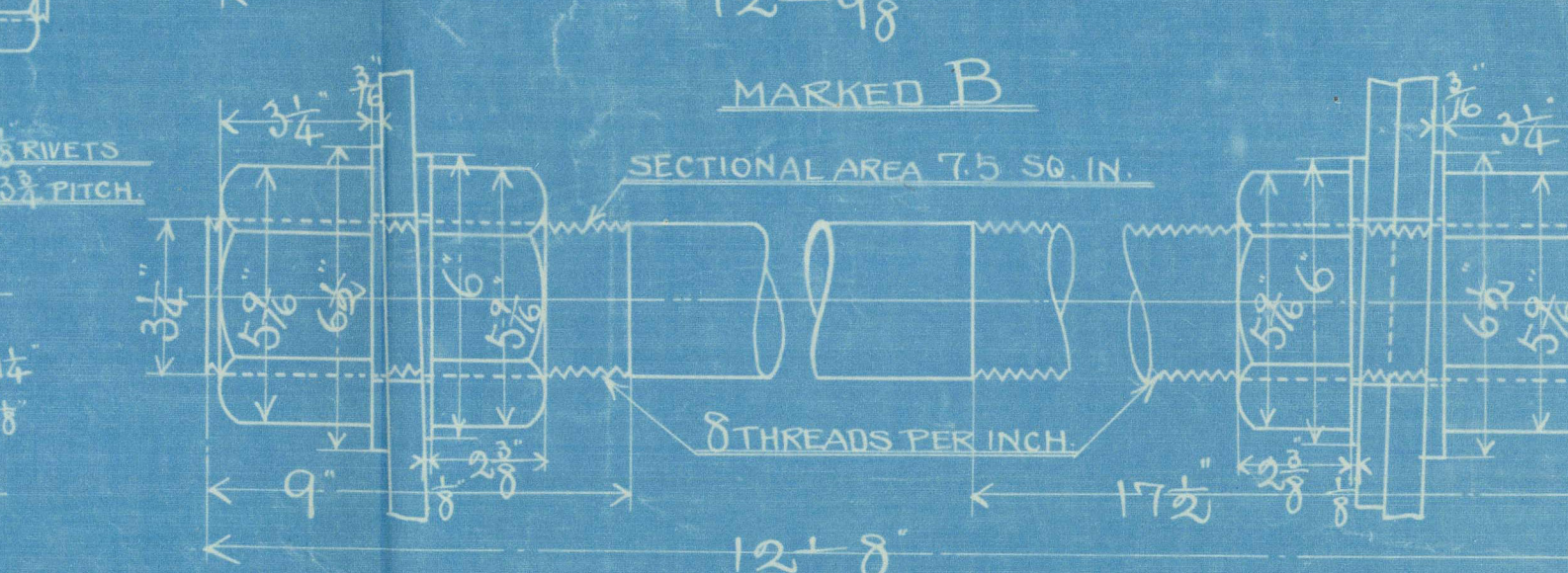
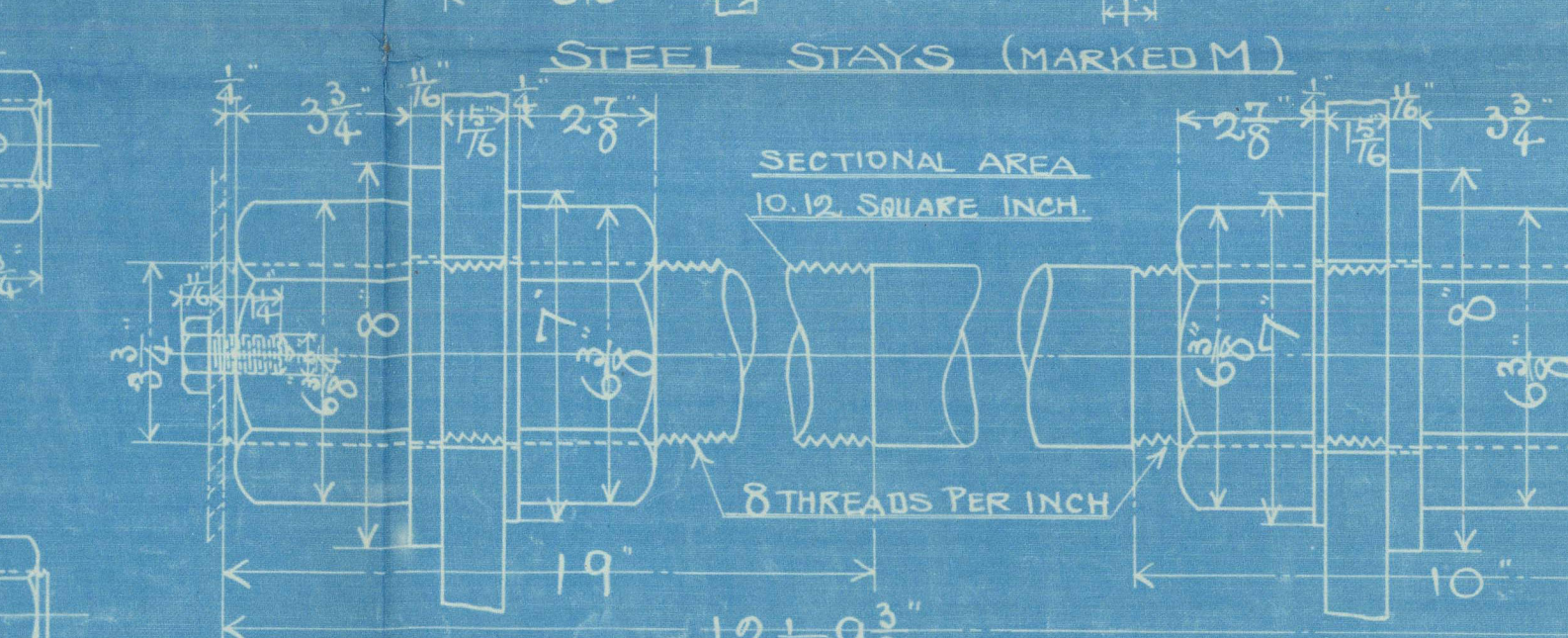
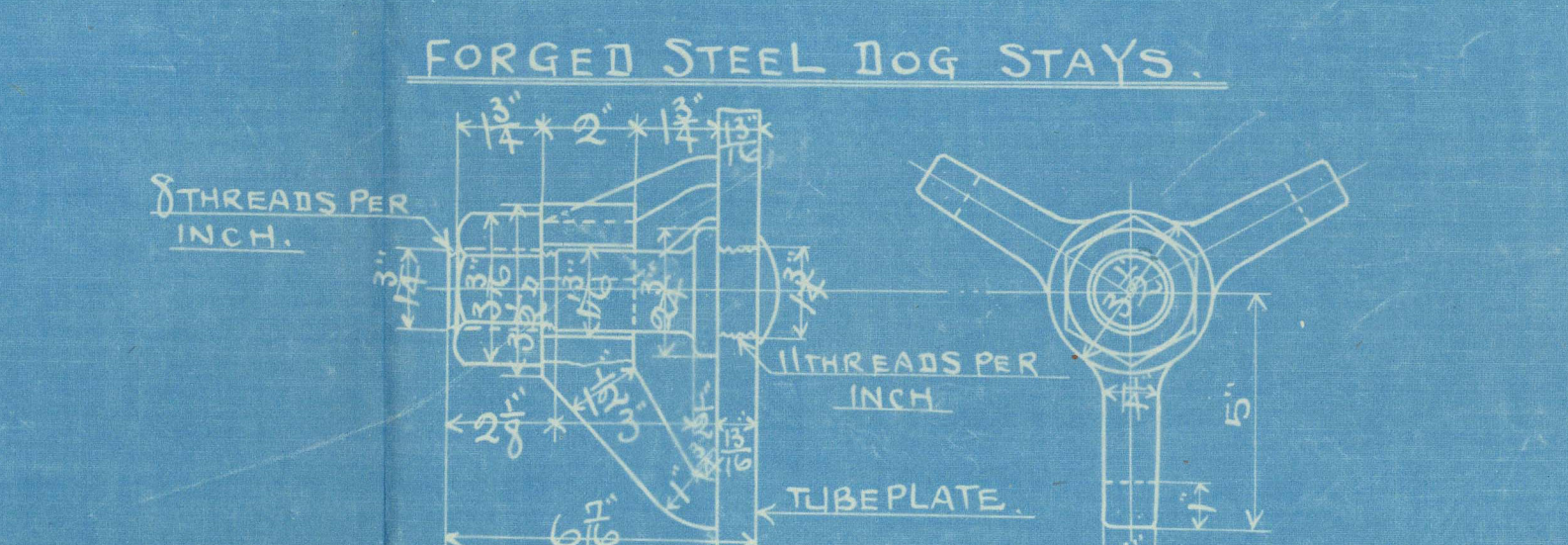
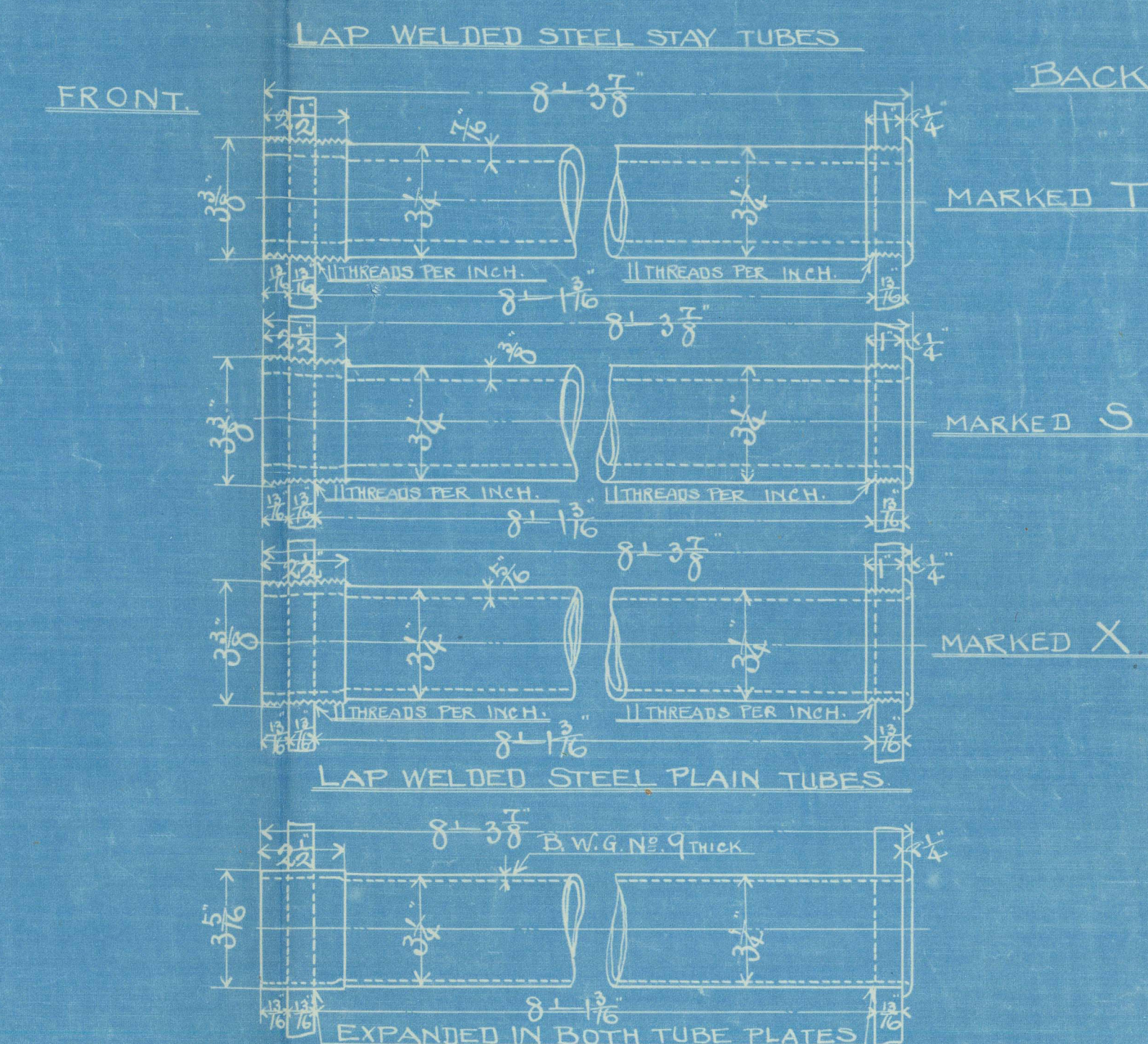
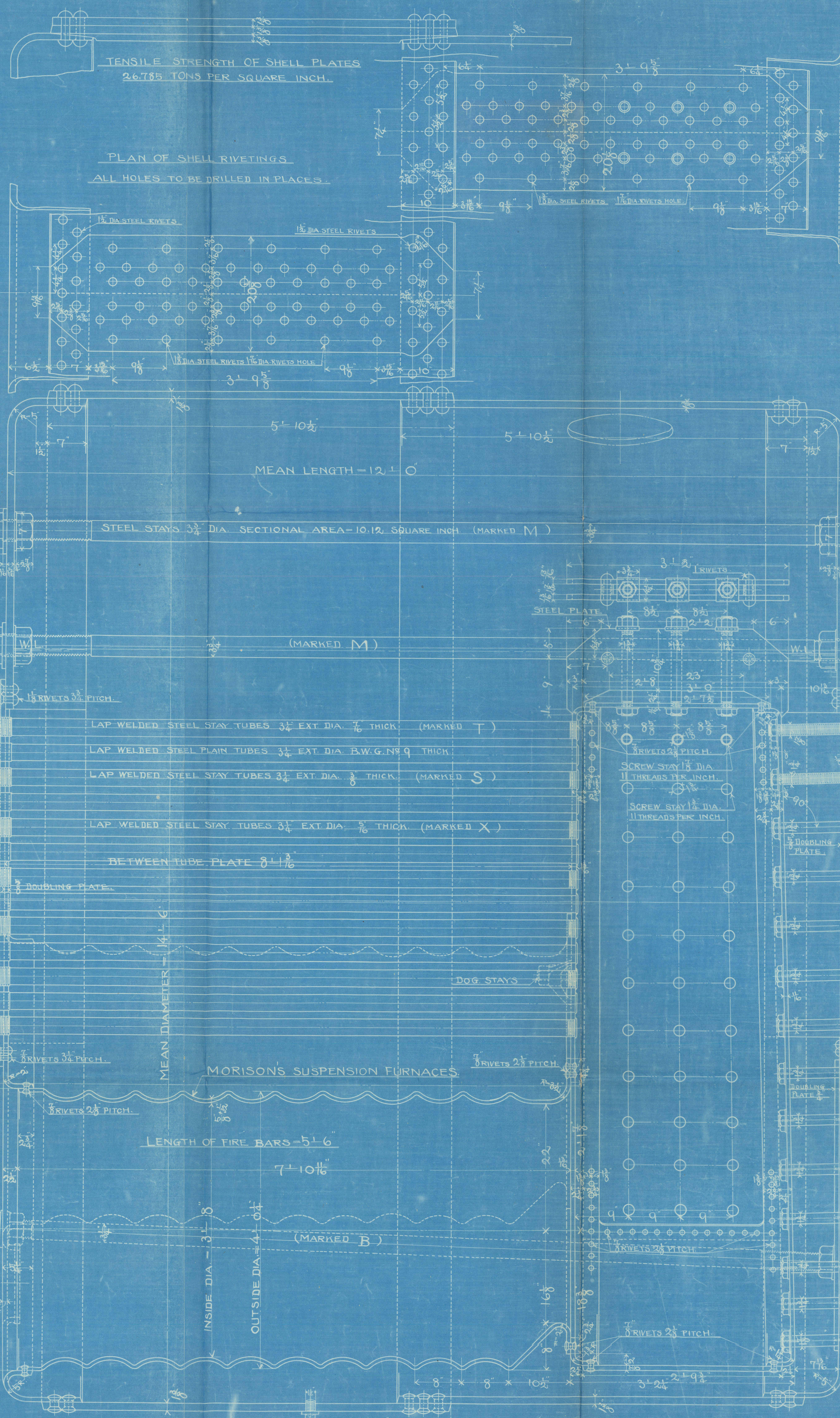
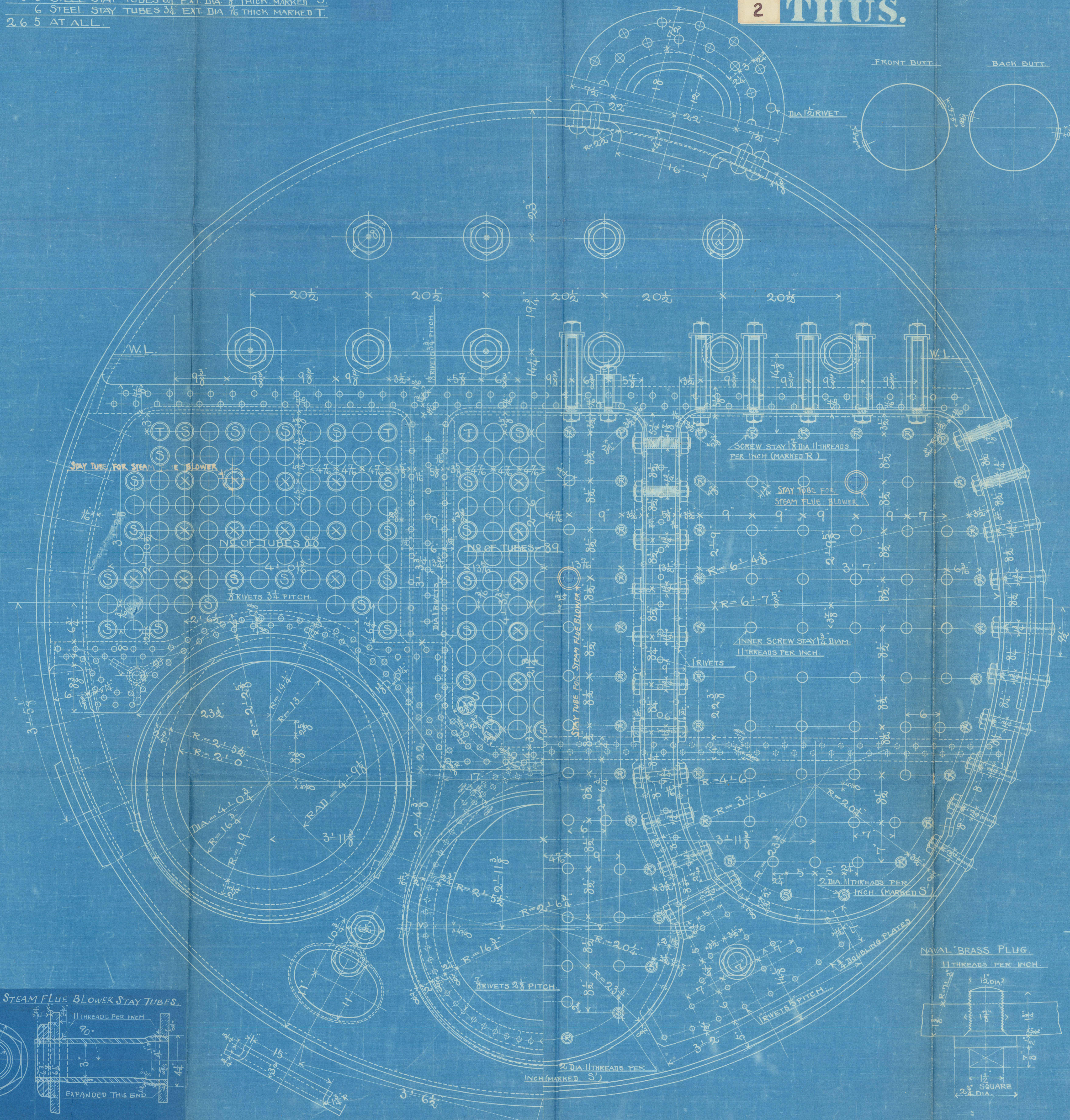
STEEL BOILERS FOR BUILDERS No 458.

DIA. 14'-6" x 12'-0" LONG.
WORKING PRESSURE 200 LBS.
SCALE: 1 1/2 IN. TO 1 FT.

2 THUS.

HEATING SURFACES.	54 FT.
TUBES.	1826.039
FLUES.	161.053
FIRE BOXES.	218.474
BACK TUBE PLATES.	46.666
TOTAL.	2252.232
GRATE AREA.	60.500
RATIO OF 1/2 G	37.227
SECTIONAL AREA OF TUBES.	11.495
SEC. AREA OF TUBES.	1
GRATE AREA.	5.263

TUBES
17 4 STEEL PLAIN TUBES 3/4 EXT. DIA. NO 9 B.W.G. THICK
3 2 STEEL STAY TUBES 3/4 EXT. DIA. 1/2 THICK MARKED X
5 3 STEEL STAY TUBES 3/4 EXT. DIA. 1/2 THICK MARKED S
6 STEEL STAY TUBES 3/4 EXT. DIA. 1/2 THICK MARKED T
2 6 5 AT ALL.



KAWASAKI DOCKYARD Co., LTD.

Builders No. 458.

S.S. "Eastern-Cloud"

Large boiler.

Drawing No.

RETAIN



© 2021

Lloyd's Register
Foundation
with 32-0157