

"AGIOS GEORGIOS IV"

Nº 279 - MIDSHIP SECTION - AS BUILT

DIMENSIONS 410'0" B.P. x 56'3 1/2" Br. MLD x 36'8" MLD TO UPPER DECK.

CLASS 100.AJ. WITH FREEBOARD.

27'8" MLD TO SECOND DECK.

CORRESPONDING TO A DRAFT NOT EXCEEDING THAT CONTEMPLATED BY THE RULES FOR A COMPLETE SUPERSTRUCTURE SHIP HAVING A TONNAGE OPENING

LENGTH ON LOAD LINE	410'0"
BREADTH MOULDED	56'3 1/2"
DEPTH TO UPPER DECK	36'8"
DEPTH TO SECOND DECK	27'8"
RULE DEPTH 27'8" + 8'0" D = 35'8"	
1st NUMBER	L x D = 14620
2nd	L x (B + D) = 37689
L + DEPTH TO UPPER DECK	40'0" + 27'8" = 67'8"
d FRAMES ONLY	24'48"
d IN E & B SPACE	
d AT 1/2 L FORWARD	26'03"
d PAINTING FRAMES AT COLL BHD	
d OTHER THAN FRAMES	23'60"

EQUIPMENT NUMBER.	
2nd No	38/03
CASINGS 0.5 x 0.8 x 7.75	267
MIDSHIP HOUSE 0.5 x 26.5 x 7.5	91
2 BOWER ANCHORS 6.8 CWT. STOCKLESS	38.618
1 BOWER ANCHOR 5.8 CWT. STOCKLESS	
3 BOWER ANCHORS PATENT STOCKLESS COLLECTIVE WT 134.2 CWT	
1 STREAM ANCHOR 13 CWT. EX STOCK	
270 FATHOMS 2" STUD CHAIN CABLE (JAYCO PATENT)	
30 - 5" STEEL WIRE STREAM HAWSER (6x12)	
120 - 4 1/2" - TOWLINE (6x24)	
2/30 - 2 1/2" - HAWSERS.	
2/30 - 2 1/2" - WARPS.	
OWNERS REQUIRE IN ADDITION TO THE ABOVE	
30 FATHOMS 4" STEEL WIRE	
2/30 - 2 1/2" -	

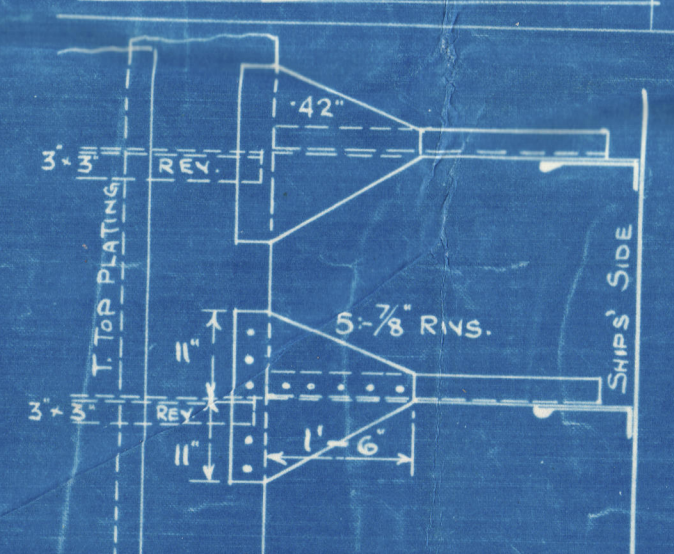
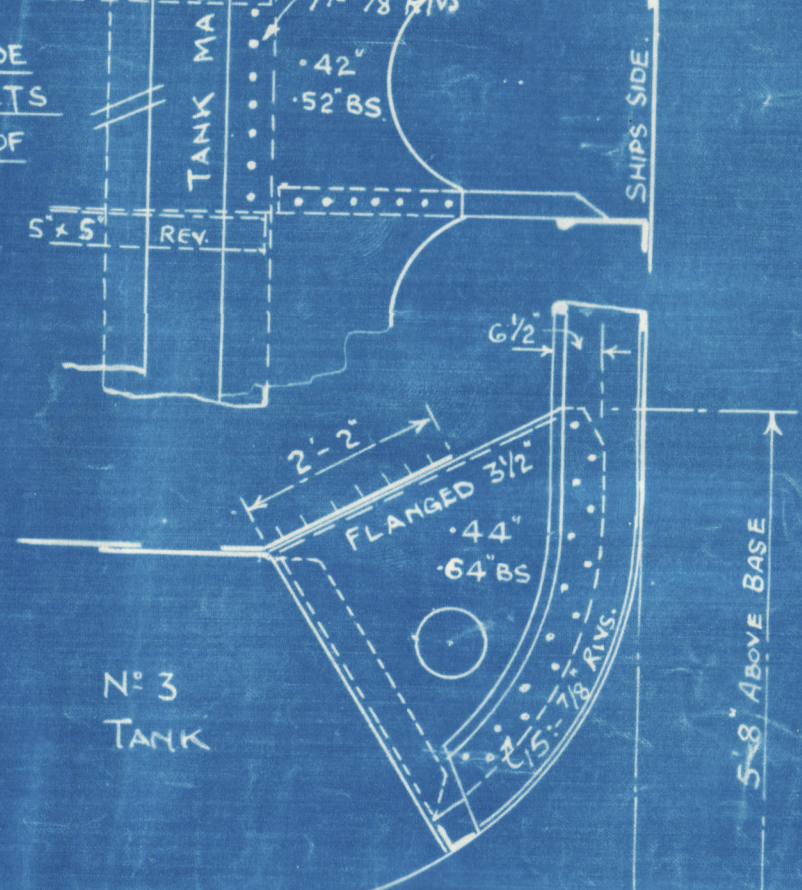
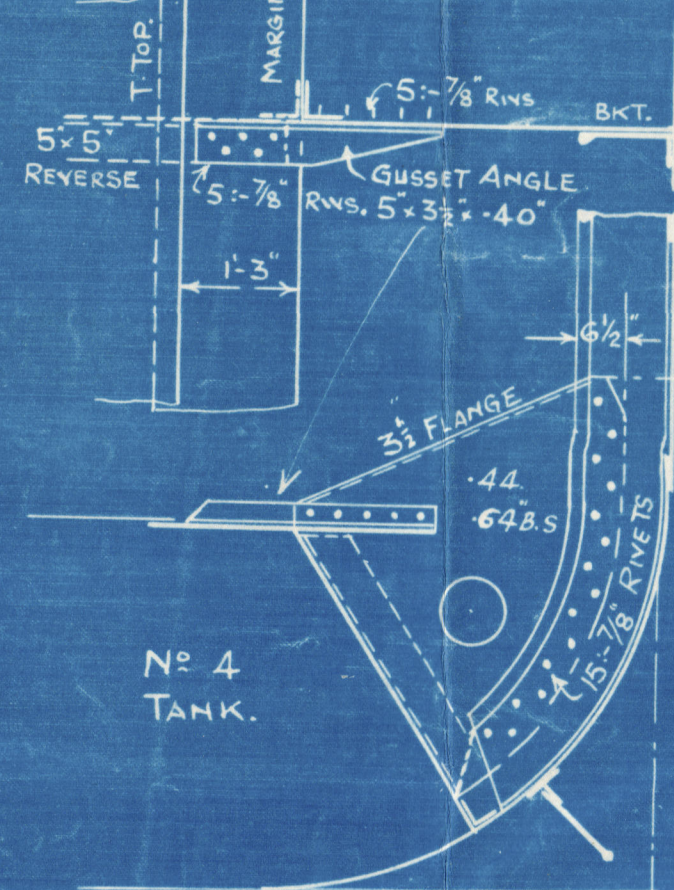
RIVETING	DIMS.
SIDE FRAMES TO SHELL IN FORE & AFTER PEAKS	5 1/2"
" " " 10% L ABAFT COLLISION BHD. (RULE P.25)	5 1/2"
" " " ELSEWHERE	6 1/2"
BOTTOM " " SHELL FORD. OF 1/2 L. TO COLLISION BHD.	5 1/2"
" " " FROM AFT TO 1/2 L FORWARD	7
" " " FLOORS " " 1/2 L " "	7
" " " FLOORS FORD. OF 1/2 L. TO COLLISION BHD.	5 1/2"
BULKHEAD FRAMES TO SHELL	5
" " " BULKHEAD	4 1/2"
REVERSE FRAMES TO TANK TOP UNDER ENGINES	5 1/2" - 6
" " " FLOORS " "	7
" " " W.T. DIVISION	5
" " " TO TANK TOP & FLOORS ELSEWHERE	7
CENTRE GIRDER BOTTOM ANGLES (CHAIN) 2 ROWS	5
" " " TOP (REEL) 2 ROWS	7
" " " VERTICAL	5
SIDE GIRDER TOP & BOTTOM ANGLES (6 RNS AT 31" SPACING)	7
" " " VERTICAL ANGLES	7
MARGIN PLATE ANGLE	4 1/2"
UPPER DECK STRINGER ANGLE	REEL.
BULKHEAD STIFFENERS (EXCEPT PEAKS)	7
" " " PEAKS	6
FLOORS W.T. DIVISION, VERTICAL STIFFENERS	7
SHELL SEAMS	4
TANK TOP SEAMS	4
UPPER DECK	4 1/2"
UPPER " 8 1/2" RNS x 7 1/8" RNS IN 31" FRAME SPACING	4 1/2"
2ND DECK BEAMS AT W.T. PLAT AFT	5
" " " ALTERNATE FRAMES FORWARD	6
UPPER " " ELSEWHERE	7

STEM BAR. 9 1/2" x 2 1/2"
STERN POST 10 1/8" x 8"
RUDDER POST 10 1/8" x 8" (CRUISER STERN)
PROPELLER BOSS PLATES 68"

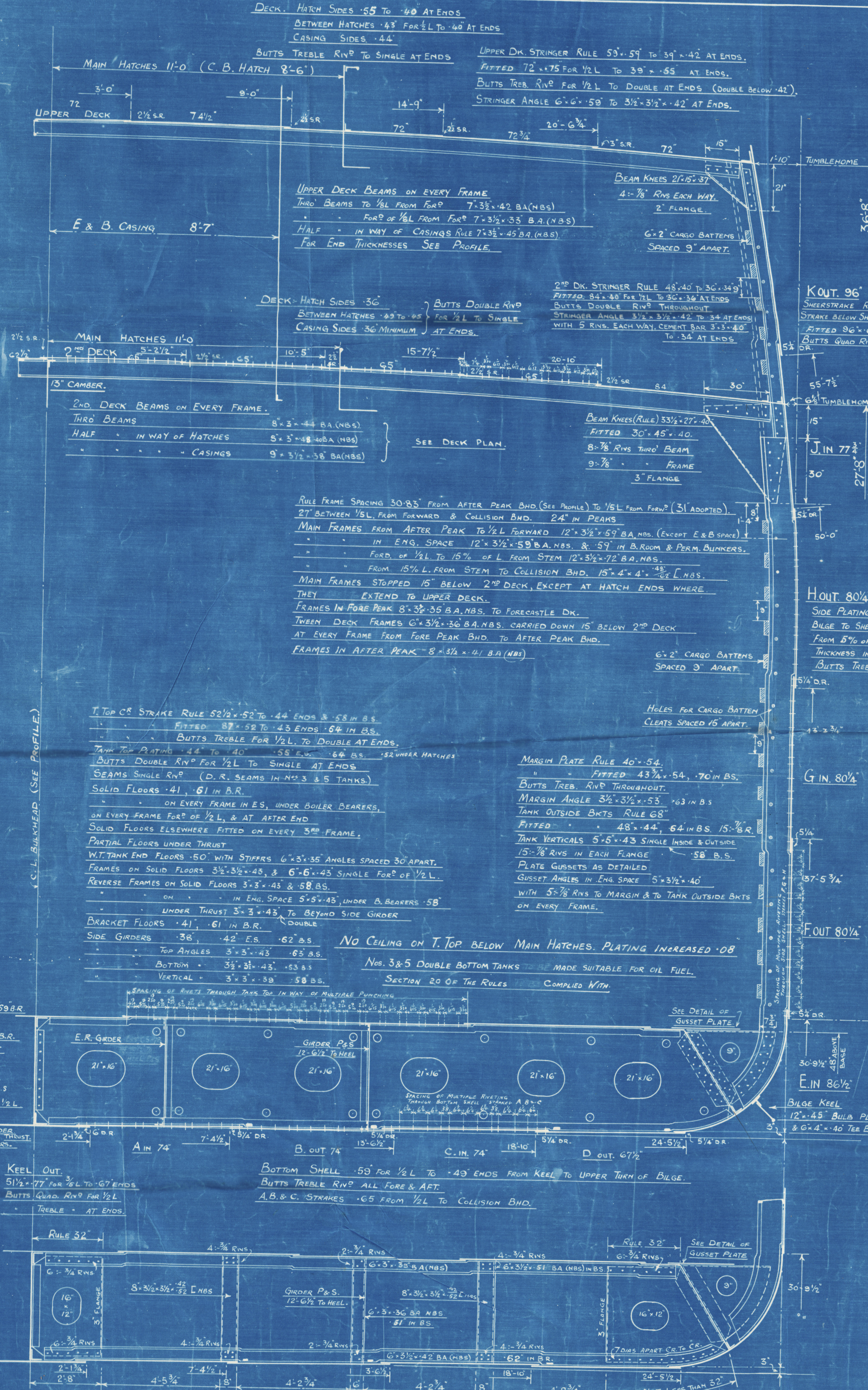
ARRGT. OF CONTINUOUS GUSSET PLATES
IN ENG. & BOILER SPACE IN WAY
OF Nº 3 TANK.

ARRGT. OF CONTINUOUS GUSSET PLATES
IN Nº 3 & 4 HOLDS & CROSS BUNKER

DETAILS OF TANK OUTSIDE
BRACKETS & ANGLE GUSSETS
IN ENG. SPACE CLEAR OF
Nº 3 TANK



ARRGT. OF GUSSET PLATES ON EVERY FRAME
Nº 1, 2 & 5 HOLDS
GUSSET CONNECTIONS AND ANGLE ATTACHMENT
INCREASED IN PAINTING AREA



INCREASED THICKNESSES ABOVE LOWER SCANTLING REQUIRED BY OWNERS AS STATED BELOW	
2ND DECK PLATING BETWEEN HATCHES	+ 1/8"
UPPER " " WHERE EXPOSED	+ 1/8"
AFTER PEAK FRAMES, BEAMS & STRINGERS	+ 1/8"
FLOORS SIDE GIRDERS, & TANK MARGIN IN BOILER	+ 1/8"
SPACE INCLUDING ALL ANGLE CONNECTIONS FOR THESE ITEMS	
CENTRE GIRDER UNDER BOILERS	+ 1/8"
TANK TOP UNDER BOILERS	+ 1/8"
TANK TOP " ENGINES	+ 5/16"
SHELL IN WAY OF PAINTING STRINGERS	+ 1/8"
" " " FORE PEAK STRINGERS	+ 1/8"

NOTE: THE ABOVE EXTRAS ARE INCLUDED
IN THE SCANTLINGS SHOWN ON THIS PLAN

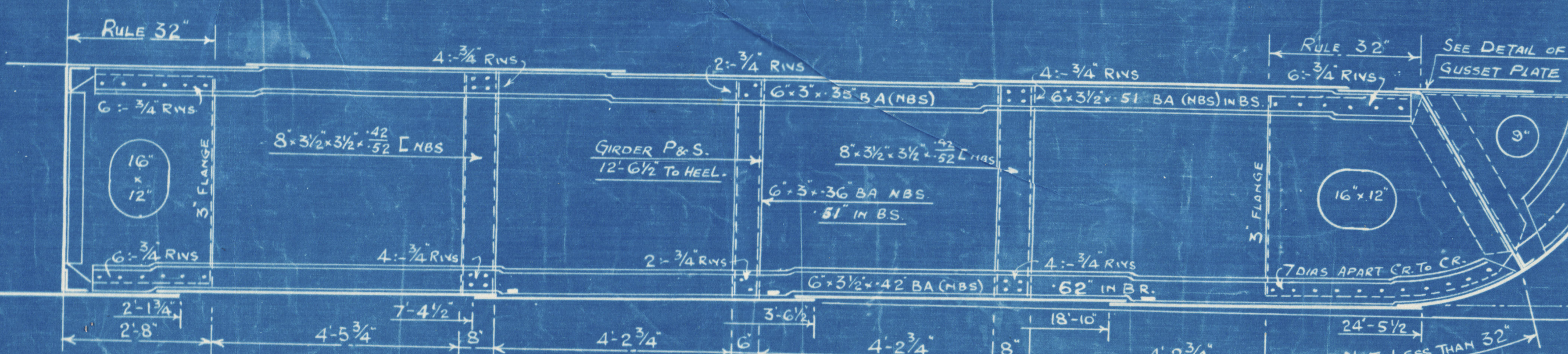
T. TOP CE STRAKE RULE 52 1/2" x 52" TO 44" ENDS & 58" IN B.S.
" " " FITTED 87" x 52" TO 43" ENDS 64" IN B.S.
" " " BUTTS TREBLE FOR 1/2 L. TO DOUBLE AT ENDS.
TANK TOP PLATING 44" TO 40" 58" E.S. 64" B.S. 52" UNDER HATCHES
" " " BUTTS DOUBLE RNP FOR 1/2 L. TO SINGLE AT ENDS
SEAMS SINGLE RNP (D.R. SEAMS IN Nº 3 & 5 TANKS)
SOLID FLOORS 41" 61" IN B.R.
" " " ON EVERY FRAME IN E.S. UNDER BOILER BEARERS
ON EVERY FRAME FORD. OF 1/2 L. & AT AFTER END
SOLID FLOORS ELSEWHERE FITTED ON EVERY 3RD FRAME
PARTIAL FLOORS UNDER THRUST
W.T. TANK END FLOORS 50" WITH STIFFERS 6" x 3" x 55" ANGLES SPACED 30" APART
FRAMES ON SOLID FLOORS 3 1/2" x 43" & 6" x 43" SINGLE FORD. OF 1/2 L.
REVERSE FRAMES ON SOLID FLOORS 3 1/2" x 43" & 58" B.S.
" " " ON " " IN ENG. SPACE 5 1/2" x 45" UNDER B. BEARERS 58"
" " " UNDER THRUST 3" x 43" TO BEYOND SIDE GIRDER
BRACKET FLOORS 41" 61" IN B.R.
SIDE GIRDERS 36" 42" E.S. 62" B.S.
" " " TOP ANGLES 3" x 3" x 43" 65" B.S.
" " " BOTTOM " 3 1/2" x 43" 53" B.S.
" " " VERTICAL " 3" x 3" x 39" 58" B.S.

MARGIN PLATE RULE 46" x 54"
" " " FITTED 43 1/2" x 54" 70" IN B.S.
" " " BUTTS TREBLE RNP THROUGHOUT
MARGIN ANGLE 3 1/2" x 3 1/2" x 53" 63" IN B.S.
TANK OUTSIDE BKT. RULE 68"
" " " FITTED 48" x 44" 64" IN B.S. 15" B.R.
TANK VERTICALS 5 1/2" x 43" SINGLE INSIDE & OUTSIDE
15" x 7 1/8" RNS IN EACH FLANGE 58" B.S.
" " " PLATE GUSSETS AS DETAILED
GUSSET ANGLES IN ENG. SPACE 5 1/2" x 40"
" " " WITH 5 1/2" RNS TO MARGIN & TO TANK OUTSIDE BKT.
ON EVERY FRAME.

NO CEILING ON T. TOP BELOW MAIN HATCHES. PLATING INCREASED .08
Nos. 3 & 5 DOUBLE BOTTOM TANKS MADE SUITABLE FOR OIL FUEL
SECTION 20 OF THE RULES COMPLIED WITH.

CENTRE GIRDER (RULE 42 1/2" x 53")
" " " FITTED 48 1/2" x 57" TO 43" 69" B.R.
" " " BUTTS TREBLE RNP THROUGHOUT
" " " TOP ANGLES 5 1/2" x 47" SINGLE TO 43" 63" IN B.R.
" " " 3 1/2" x 48" DOUBLE UNDER THRUST
" " " & IN ENG. SPACE
" " " 3 1/2" x 44" DOUBLE FORD. OF 1/2 L.
" " " BOTTOM ANGLES 6" x 6" x 55" SINGLE TO 43" 58" B.S.
" " " 3 1/2" x 52" TO 50" DOUBLE FORD. OF 1/2 L.
" " " VERTICALS 5" x 3" x 43" 58" IN B.S.
" " " 5" x 5" x 43" IN ENG. SPACE & UNDER THRUST
" " " 5" x 5" x 58" UNDER BOILER BEARERS

KEEL OUT 51 1/2" x 77" FOR 1/2 L. TO 67" ENDS
" " " BUTTS TREBLE RNP FOR 1/2 L.
" " " BUTTS QUAD RNP FOR 1/2 L.
" " " TREBLE " AT ENDS
BOTTOM SHELL 55" FOR 1/2 L. TO 43" ENDS FROM KEEL TO UPPER TURN OF BILGE
" " " BUTTS TREBLE RNP ALL FORE & AFT
" " " A.B. & C. STRAKES 65" FROM 1/2 L. TO COLLISION BHD.



Bartram & Sons, Ltd.,
No. 249.

Midship Section (As Built).

SUNDERLAND RPT. NO. 32430

S.S. "Agios Georgios N".

W143-0063



© 2019

Lloyd's Register
Foundation