

2nd DECK PLATING BETWEEN HATCHES	+ 1/8
UPPER " " WHERE EXPOSED	+ 10%
AFTER PEAK FRAMES, BEAMS & STRINGERS	+ 0/6
FLOOR SIDE GIRDERS, & TANK MARGIN IN BOILER	+ 1/0
SPACE INCLUDING ALL ANGLE CONNECTIONS FOR THESE ITEMS	
CENTRE GIRDER UNDER BOILERS	+ 1/0
TANK TOP UNDER BOILERS	+ 10%
TANK TOP " ENGINES	+ 5%
SHELL IN WAY OF PAINTING STRINGERS	+ 0/6
" " " FORE PEAK STRINGERS	+ 0/6

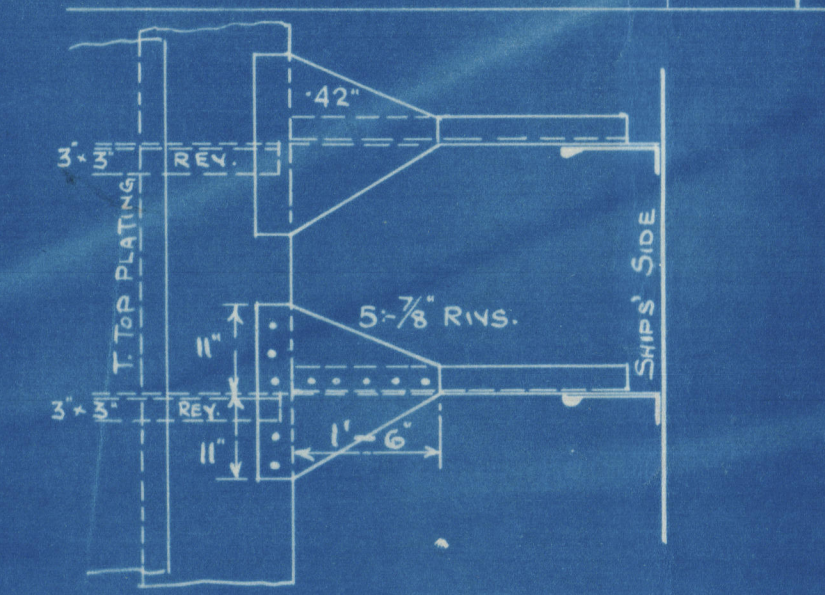
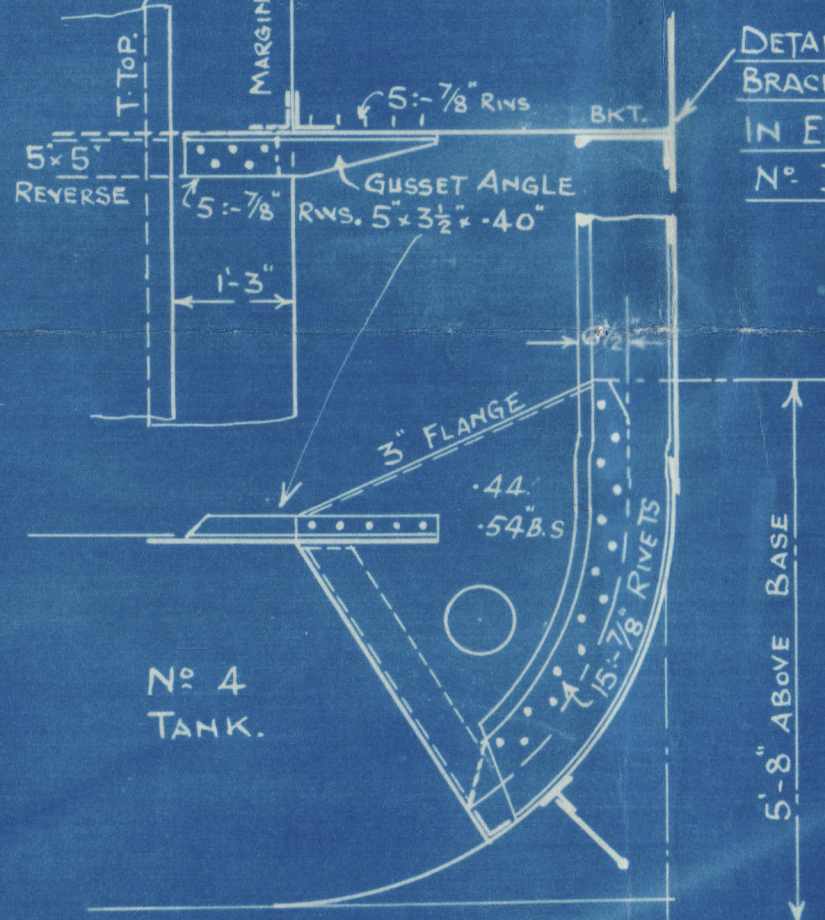
411'-0" 1/2 centre of main deck

DIMENSIONS 410'-0" B.P. x 56'-3 1/2" Br. MLD x 36'-8" MLD TO UPPER DECK. -

CLASS \star 100.A.1. WITH FREEBOARD. - x 27'-8" MLD TO SECOND DECK. -

LENGTH ON LOAD LINE 410'0"
BREADTH MOULDED 56'-3/4"
DEPTH TO UPPER DECK 36'-8"
DEPTH TO SECOND DECK 27'-8"
RULE DEPTH 27'-8" + 8'-0" D = 35'-8"
1ST NUMBER L x D = 14620
2ND " L x (B+D) = 37693
L ÷ DEPTH TO UPPER DECK 4/5 = 11/8.
d FRAMES ONLY. 24.00
d " 1st E & B SPACE 23.18
d " = AT 1/2 L. FORWARD 26.03'
d PAINTING FRAMES AT ROLL'S BHD 28.00
d (OTHER THAN FRAMES) 23.60

RIVETING		D.I.A.
SIDE FRAMES TO SHELL IN FORE & AFTER PEAKS	1/2" - 2"	5 1/2
" " " 10% L ABAFT COLLISION BND. (RULE PART)	"	5 1/2
" " " ELSEWHERE	"	6 1/2
BOTTOM " " " FORD. OF 1/2 L. TO COLLISION BND.	"	5 1/2
" " " " FROM AFT TO 1/2 L FORWARD	"	7
" " " FLOORS " " 1/2 L "	"	7
" " " " FORD OF 1/2 L. TO COLLISION BND.	"	5 1/2
BULKHEAD FRAMES TO SHELL	"	5
" " " BULKHEAD	"	4 1/2
REVERSE FRAMES TO TANK TOP UNDER ENGINES	"	5 1/2 - 6
" " " FLOORS " "	"	5
" " " W.T. DIVISION	"	5
" " " TO TANK TOP & FLOORS ELSEWHERE	"	7
CENTRE GIRDER BOTTOM ANGLES (CHAIN) 2 ROWS	"	5
" " " TOP (REELED) 2 ROWS	"	7
" " " VERTICAL "	"	5
SIDE GIRDER TOP & BOTTOM ANGLES (AS AT ST BRACING) 5' - 21' "	"	7
" " " VERTICAL ANGLES	"	7
MARGIN PLATE ANGLE	"	4 1/2
UPPER DECK STRINGER ANGLE	REELED	5 1/2
BULKHEAD STIFFENERS (EXCEPT PEAKS)	"	7
" " PEAKS	"	6
FLOORS W.T. DIVISION, VERTICAL STIFFENERS	"	7
SHELL SEAMS	"	4
TANK TOP SEAMS	"	4
2ND DECK "	"	4 1/2
UPPER " "	"	4 1/2
2ND DECK BEAMS AT W.T. FLAT AFT	"	5 1/2
" " " " ALTERNATE FRAMES FORWARD	"	6
" " " ELSEWHERE	"	7
UPPER " "	"	7



203600
190
Messrs. *Bartram & Son, Ltd.*

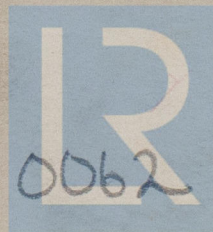
No. 279.

Midship Section



"AGIOS GEORGIOS" ✓
SUNDERLAND RPT. NO. 32430.

W143 - 0062



© 2019

Lloyd's Register
Foundation