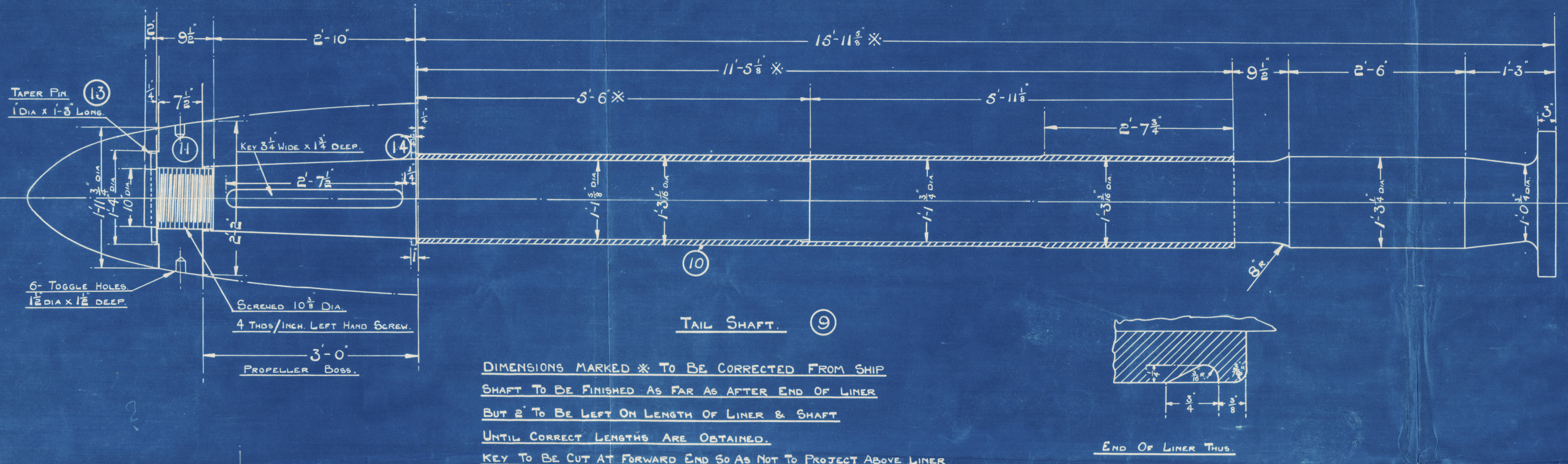
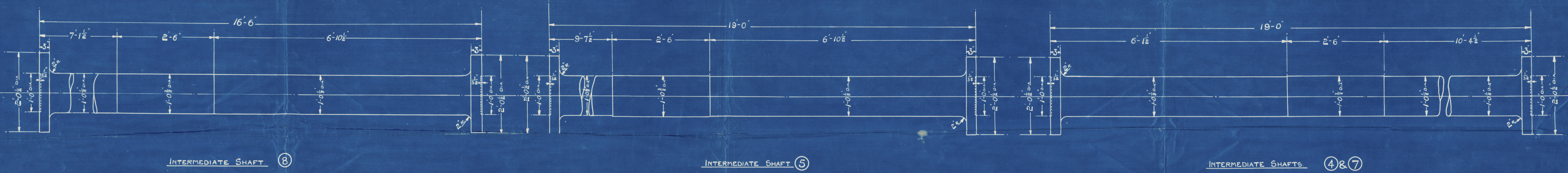
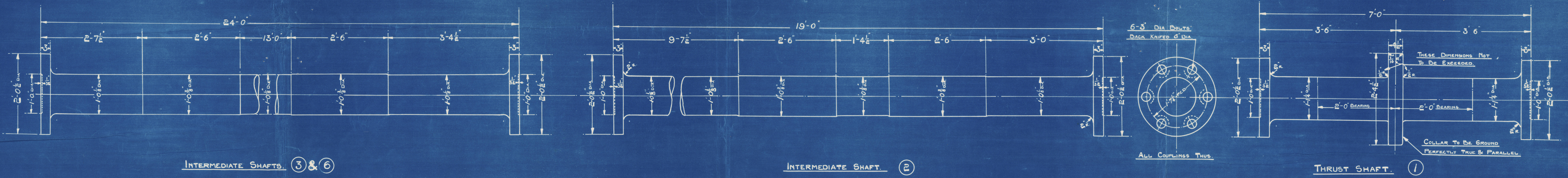
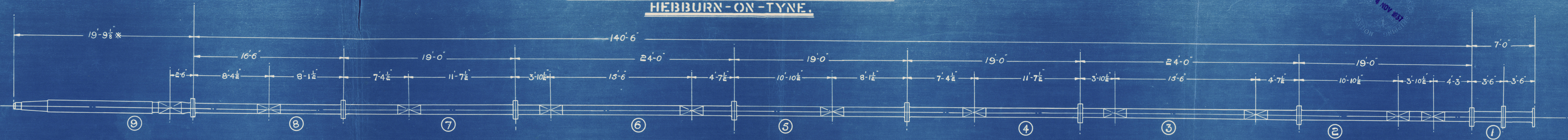


WHITE'S MARINE ENGINEERING CO. LTD.
HEBBURN-ON-TYNE.

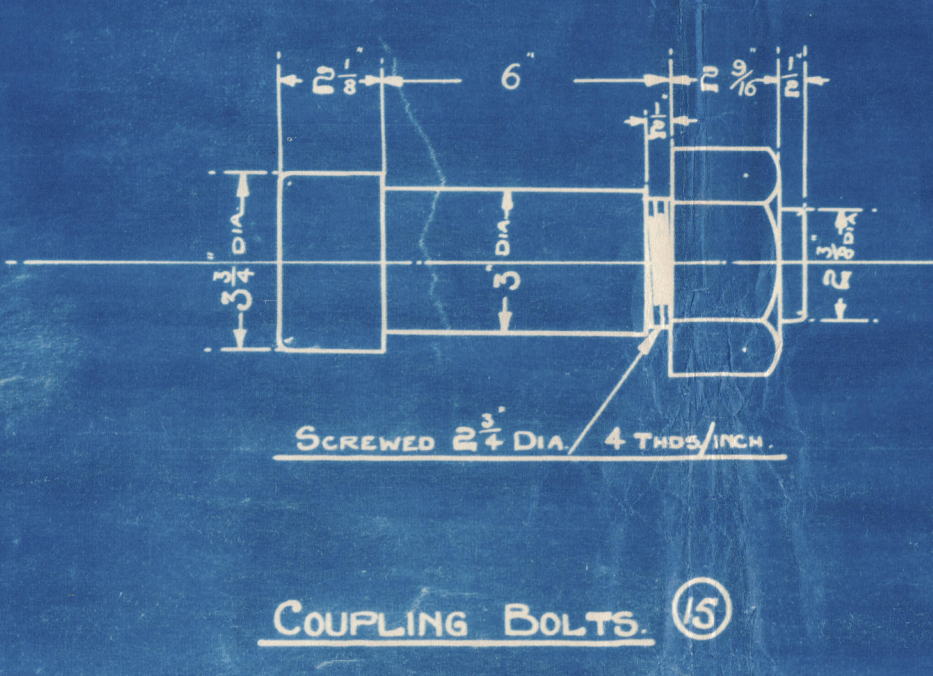
4 NOV 1937



NOTE: ALL COUPLINGS TO BE MARKED TO SHOW WHERE THEY FIT TOGETHER
" " " FINISHED TO EXACT DIAMETER & ALL HOLES
TO BE DRILLED & REAMED TO ITS SUPPLIED BY W.M.E. CO. LTD.
SHAFTS IN WAY OF BEARINGS TO BE SMOOTH FINISHED
SHAFTS BETWEEN BEARINGS TO BE SEMI-SMOOTH FINISHED
PROPELLER SHAFT TAPER & KEY FINISHED TO TEMPLATE SUPPLIED BY W.M.E. CO. LTD.
TO BE PASSED & STAMPED BY LLOYDS.

QUANTITIES GIVEN ARE FOR ONE ENGINE NO ONLY.

MARK	DESCRIPTION	N° OFF	MATERIAL	ORDERED FROM	REMARKS
1	THRUST SHAFT	ONE	INOST STEEL	OUTSIDE	
2	INTERMEDIATE SHAFT	ONE	"	"	
3	"	ONE	"	"	
4	"	ONE	"	"	
5	"	ONE	"	"	
6	"	ONE	"	"	
7	"	ONE	"	"	
8	"	ONE	"	"	
9	TAIL SHAFT	ONE	ONE	"	
10	" " LINER	ONE	ONE	GUNMETAL	"
11	" " NUT	ONE	ONE	W. IRON	"
12	" " CONE	ONE	ONE	CAST IRON	FOUNDRY
13	TAPER PIN	ONE	ONE	MILD STEEL	OUTSIDE
14	PROPELLER KEY	ONE	ONE	"	"
15	COUPLING BOLTS	54	6	"	"



SHAFTING.
SCALE :- 1" = ONE FOOT.
ENGINE NO 14C.
DRAWING NO C.663.

WHITE'S MARINE ENGINEERING CO. LTD.
HEBBURN-ON-TYNE.
26 OCT 1937

3492

Messrs. White's Marine Engineering Co. Ltd.,

Flgios Georgios IV

SLD. 32430.

Hebburn on Tyne.

Engine no. 14E.

Shafting.

W143



© 2019

Lloyd's Register
Foundation