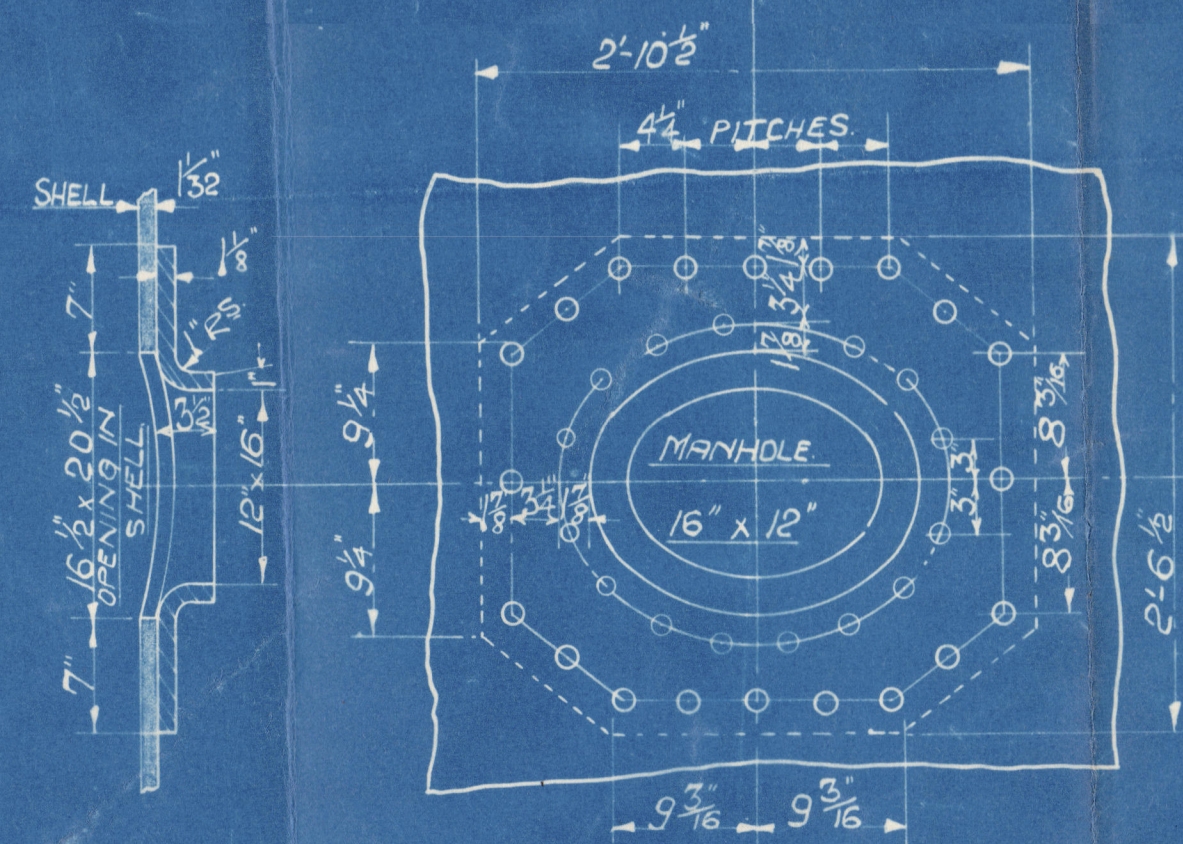


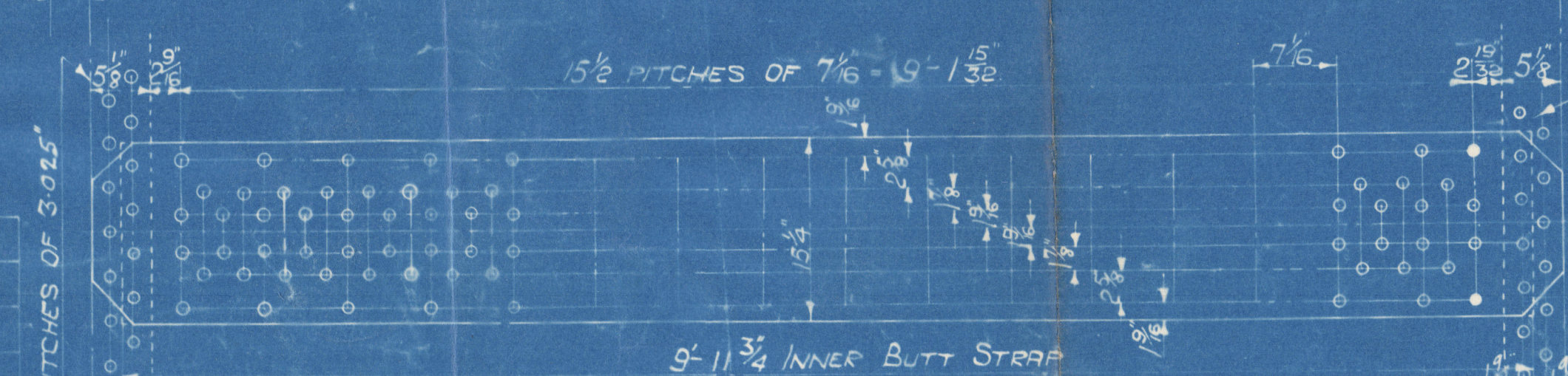
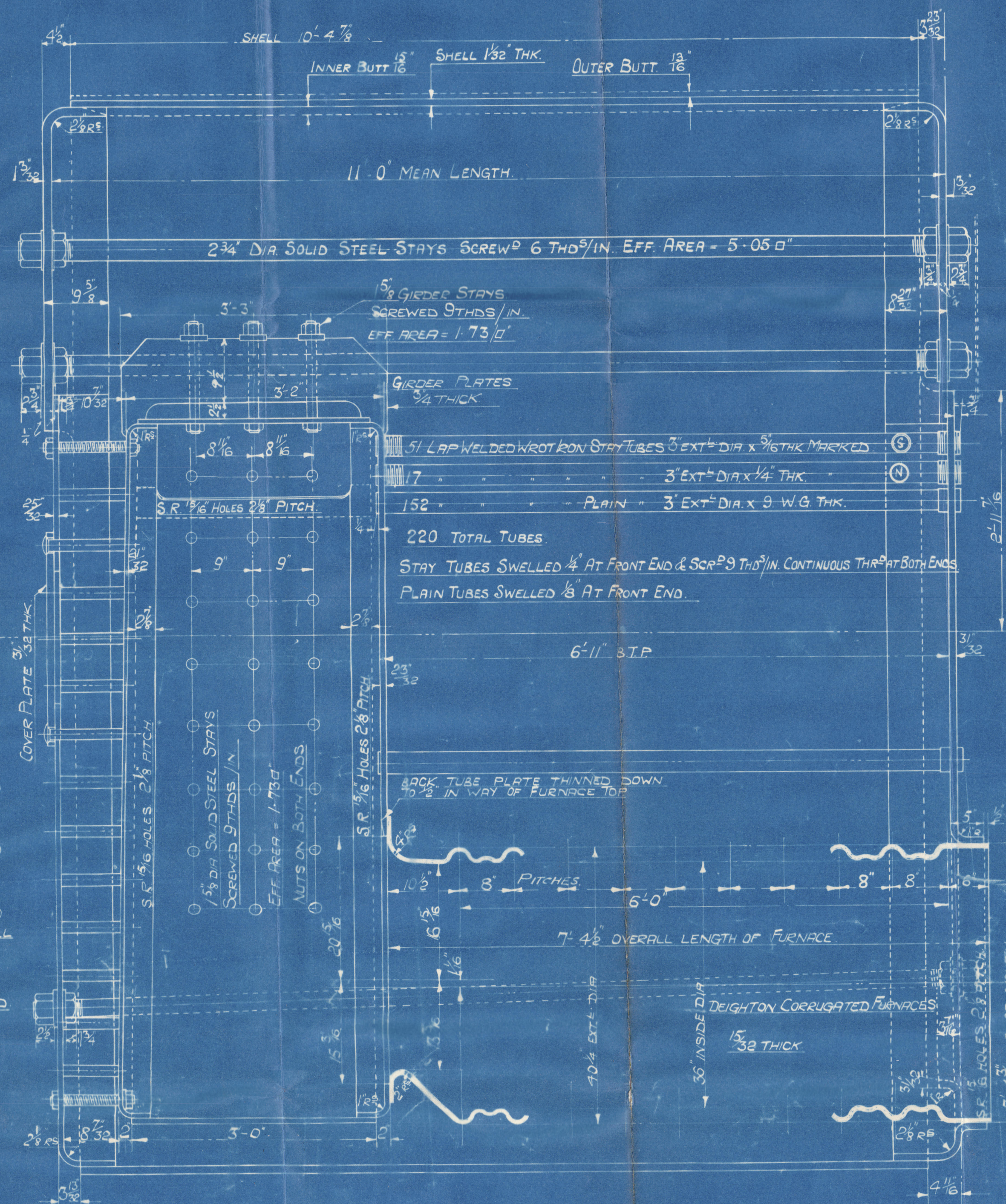
JOHN G. KINCAID & CO. LTD.  
(FORMERLY DRUMMOND & CO. LTD.)  
GREENOCK



MANHOLE COMPENSATION RING  
36 RIVETS. 1 3/16 DIA. 1/4 DIA. RIVET HOLES.



STAYS BETWEEN C.C. & SHELL  
1 3/8 DIA. SCREWED 9 THDS./IN.  
EFF. AREA 1.73 sq. IN.  
SCREWED THRO SHELL CRANKED



LONG. SCAM	DIA OF RIVET HOLE	PITCH	PLATE THICK	W.P. OF SHELL BY RULE
1 1/2	1 1/8	7 1/2	1/8	180.5 LBS./SQ. IN.

ENG. NO.	NO. REQUIRED
K. 61.	TWO OFF.

ALL PLATES STAYS & RIVETS TO BE OF SIEMENS-MARTIN MILD STEEL.  
TUBES OF LAP WELDED WROUGHT IRON.  
LONG. SCAMS - DOUBLE BUTT STRAPS TREBLE RIVETED.  
CIRC. SCAMS - DOUBLE RIVETED LAP.  
WORKING PRESS. 180 LBS./SQ. IN.  
TEST PRESS. 320 LBS./SQ. IN.  
ALL HOLES DRILLED AFTER PLATES ARE BENT THEN.  
PLATES TAKEN APART & BURRS REMOVED.  
ALL RIVETING BY HYDRAULIC PRES. WHERE PRACTICABLE.

THICKNESS	TENSILE STRENGTH
SHELL PLATES 1 1/2	28 - 30 TONS
INNER BUTT STRAPS 1 1/8	28 - 30
OUTER 1 1/8	28 - 30
GIRDERS 3	28 - 32
TOP ENDS 1 3/8	26 - 30
FRONT BOTTOM 2 1/2	28 - 32
BACK BOTTOM 2 1/2	28 - 32
BACK TUBE PLATES 2 1/2	28 - 32
C.C. BACKS 2 1/2	28 - 32
WRAPPERS 1 1/2	28 - 32
FURNACES 2 1/2	28 - 32
C.C. BOTTOM 2 1/2	28 - 32
MANHOLE COMP. 1 1/2	28 - 32
COVER PLATE 2 1/2	28 - 32
COMB. CHMB. STAYS 2 1/2	28 - 32
LONG. STAYS 2 1/2	28 - 32
RIVET BBS. 2 1/2	28 - 32

THICKNESS	TENSILE STRENGTH
220 TUBES 3" EXT. DIA.	119.4-6
FURNACES	240.0
COMBUSTION CHAMBERS	245.4
TOTAL H.S. FOR ONE BOILER	1680.0
TOTAL H.S. FOR TWO BOILERS	3360.0
SIZE OF SAFETY VALVE 2 1/2" DIA. (DOUBLE)	HIGH LIFT
AREA THRO TUBES	8.22
STEAM SPACE - CUBIC FEET	310
WATER AREA	122.6
WEIGHT OF WATER	1805 LBS.

BOILERS GAS AND OIL FIRED

RETARDERS FITTED IN ALL TUBES

## BOILERS.

DIESEL ENG. NO. K. R. K. - 61. / R

13'-0" MEAN DIA. x 11'-0" MEAN LENGTH x 180 LBS./SQ. IN. W.P.

TO PASS LLOYD'S TESTS AND REQUIREMENTS

SCALE - 1" = 1' FOOT

14TH APRIL 1930

DRC. NO. 5531

14/4/30  
Duplicate of 115.8/9  
Approved (London) 10/2/29

14/4/30

14/4/30



Airc Boiler N 61.

Mucard

Blythwood <sup>MY</sup> 18.30

Supplement of N 57- 8-9

JOHN G. KINCAID & Co. LTD.  
(DRAWING OFFICE)

14 APR. 1930

ENGINEERS & BOILERMAKERS.  
GREENOCK.

M/● "a delleu"

Perk 1<sup>st</sup> Entry Lpt N 19275.



© 2019

W 143-0026  
Lloyd's Register  
Foundation