

# M.V. "ADELLEN" MIDSHIP SECTION

SCALE:  $\frac{1}{2}" = 1 \text{ FOOT}$

DIMENSIONS: 458'-6" B.P. x 59'-9" x 34'-4" M.H. TO UPPER DECK.  
CLASS 100 A.I. "CARRYING PETROLEUM IN BULK" LONGITUDINAL FRAMING  
NOTE: ALL SECTIONS ARE N.B.S.

BLYTHSWOOD  
SHIPBUILDING  
CO. LTD.  
SCOTSTOWN

## LLOYDS NUMERALS.

L.D. = 15780  
L x (B.D.) = 43155  
L/D = 13.82  
d = 22.48 22.47

2 TRANSVERSES IN TANKS 2-10 SPACED 9'-7", 7'-7", 9'-7"  
1 TRANSVERSE IN TANK 1 SPACED 11'-8" FORD, 11'-5" AFT  
TRANSVERSE FRAMING FORD & AFT OF OIL TANKS

## EQUIPMENT NUMERALS

| L x (B.D.)    | 23175.00           |
|---------------|--------------------|
| POOP          | 94.375 x 7.5 x 7.5 |
| BRIDGE        | 29.5 x 7.5 x 7.5   |
| FORECASTLE    | 37.5 x 7.5 x 7.5   |
| CASINGS       | 74.5 x 7.5 x 5     |
| MIDSHIP HOUSE | 27.5 x 7.5 x 5     |
|               | 44464.96           |

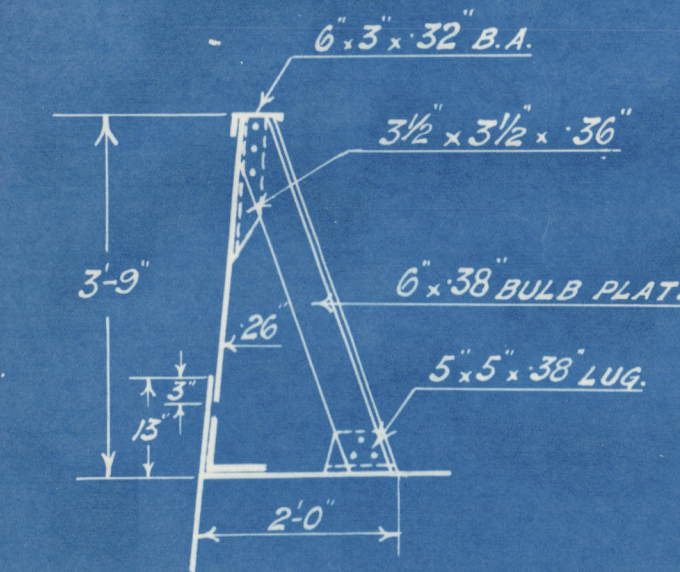
## EQUIPMENT.

|                             |                             |          |
|-----------------------------|-----------------------------|----------|
| 2 BOWER ANCHORS (STOCKLESS) | EACH 77 CWTs                | COLL. WT |
| 1 ANCHOR ( " )              | " 65 1/2 "                  | 219 CWTs |
| 1 STREAM ANCHOR             | 22 CWTs                     |          |
| 300 FATHOMS                 | 2 1/2" STUD CHAIN CABLE     |          |
| 120 FATHOMS                 | 5" STEEL WIRE (STREAM)      |          |
| 130 FATHOMS                 | 5 1/2" STEEL WIRE (TOWLINE) |          |
| 100 FATHOMS (2 OFF)         | 2 3/4" STEEL WIRE (HAWSER)  |          |
| 100 FATHOMS (2 OFF)         | 2 3/4" STEEL WIRE (WARP)    |          |

STEM  
RUDDER POST  
STERN POST

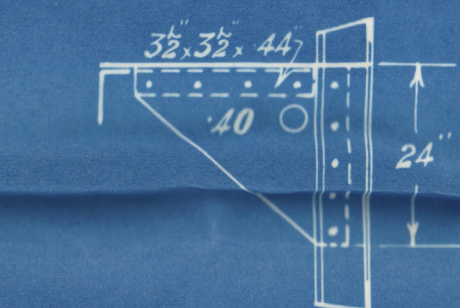
## RIVETING.

SHELL LONG\* 1-A RIVETS THRO' SHELL 6 DIAS. APART  
5-B  
4 1/2 DIAS FOR 10 RIVS EACH SIDE OF B.H.D.S. & 8 & 10 ON OPPOSITE  
SIDES OF TRANSVERSES.  
SHELL LONG\* 9-22, 6 DIAS, 3 1/2 DIAS FOR 10 RIVS EACH  
SIDE B.H.D.S. & 8 & 10 ON OPPOSITE SIDES OF TRANSVERSES.  
SHELL LONG\* 10-11, 6 DIAS, 3 1/2 DIAS FOR 10 RIVS EACH SIDE B.H.D.S. & 8 & 10 ON OPPOSITE SIDES OF TRANSVERSES.  
SHELL LONG\* 1-4, 6 DIAS, 3 1/2 DIAS FOR 10 RIVS EACH SIDE B.H.D.S. & 8 & 10 ON OPPOSITE SIDES OF TRANSVERSES.  
SHELL LONG\* 5-8, 6 DIAS, 3 1/2 DIAS FOR 10 RIVS EACH SIDE B.H.D.S. & 8 & 10 ON OPPOSITE SIDES OF TRANSVERSES.  
SHELL LONG\* 9-11, 6 DIAS, 3 1/2 DIAS FOR 10 RIVS EACH SIDE B.H.D.S. & 8 & 10 ON OPPOSITE SIDES OF TRANSVERSES.  
SEAMS OF SHELL PLATING MARKED THUS X. 3 1/2 DIA SPACING  
BETWEEN COLLISION B.H.D.S. 8-88. OTHER SEAMS SPACED 4 DIAS APART

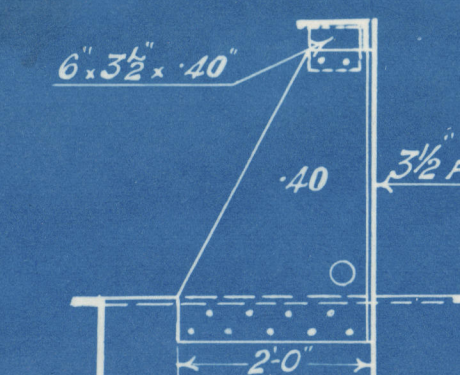


DETAIL OF BULKHEAD STAYS.

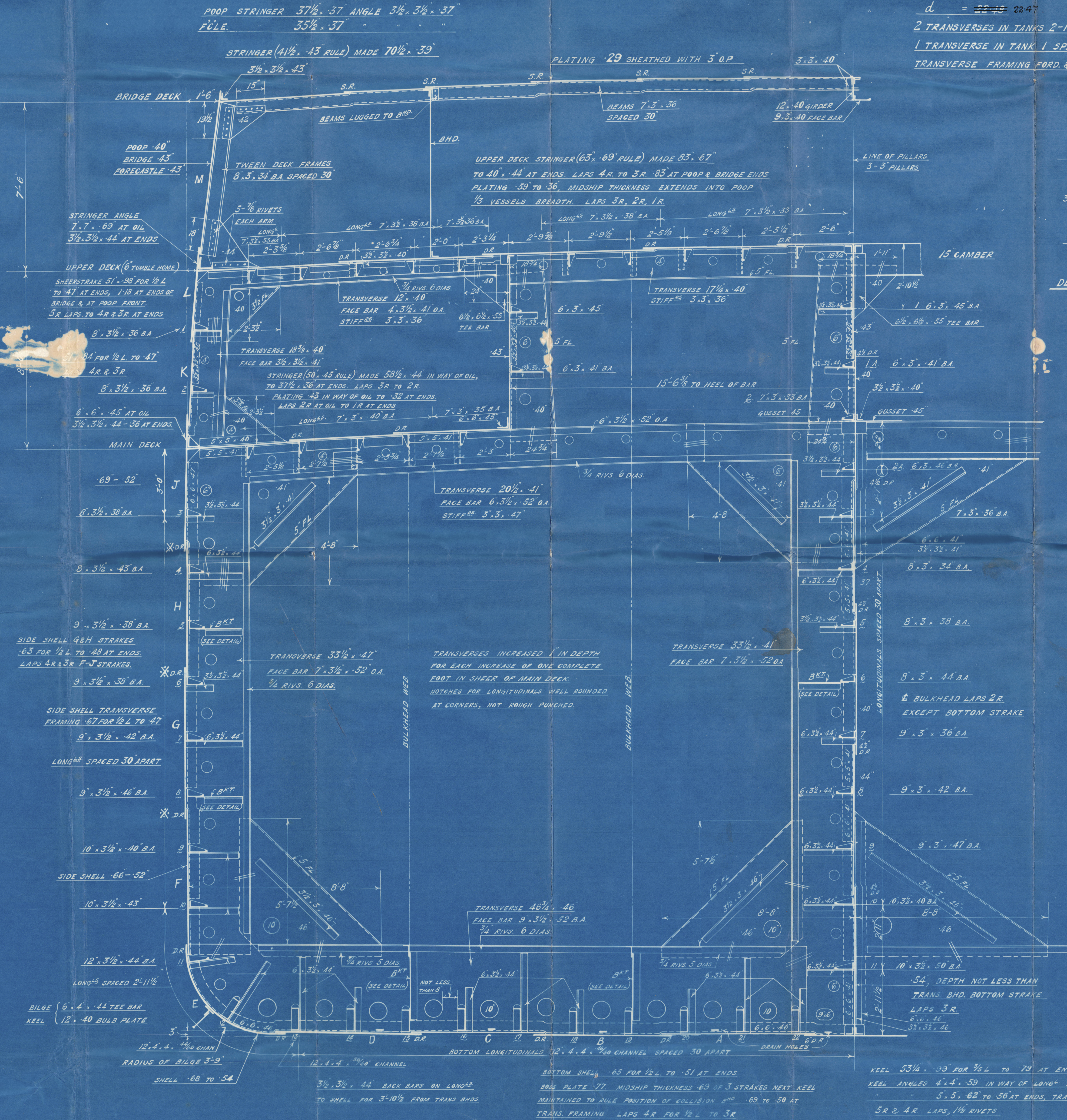
DRAIN HOLES 7/8 DIA. 12" APART,  
TO BE PUNCHED IN ALL LONG\*  
B.H.D. STIFFENERS B.A.S.  
2 HOLES 24" APART IN 12" CHANNELS



BRACKETS TO B.H.D. WEB  
& SIDE TRANSVERSES.



BRACKETS TO BOTTOM TRANSVERSE  
& FACE BAR SUPPORT





MOTORSHIP "ADELLEN."

BLYTHSWOOD S.B. CO LTD

Nº 30.

MIDSHIP SECTION.

(AS BUILT).

GLASGOW REPORT No 51033



© 2019

W143-002 Lloyd's Register  
Foundation