

Nos 405-6-7-8 & 9. *410-411 & 412*

STEEL SCREW DRIFTERS

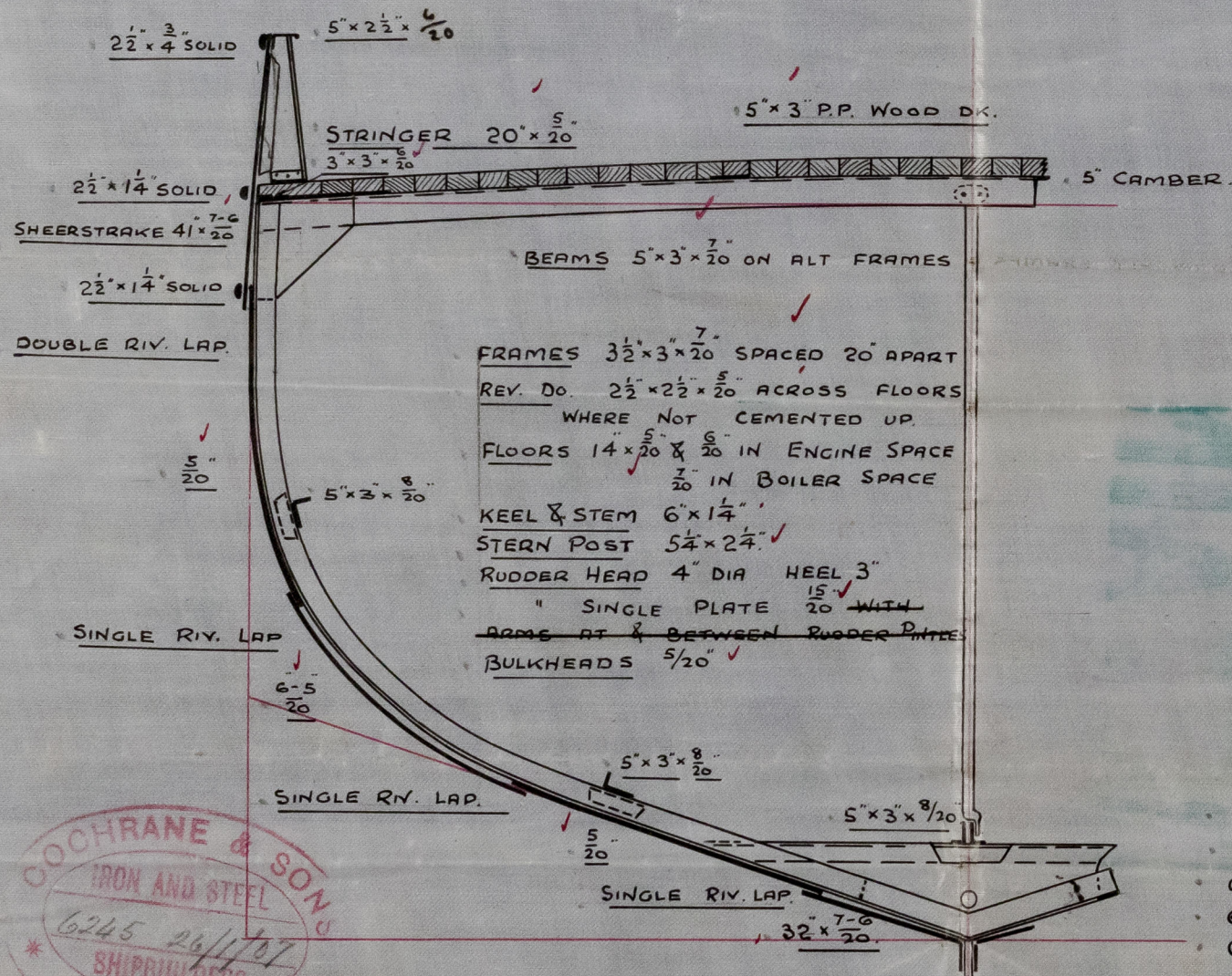
# MIDSHIP SECTION

DIMENSIONS 84'-0" x 18'-3" x 9'-3" M<sup>LD</sup>

SCALE  $\frac{1}{2}$ " = 1 FOOT.

TO CLASS 100 A1 FOR FISHING PURPOSES.

DECK PLATED OVER IN WAY OF MACHINERY SPACE.



## NUMERALS.

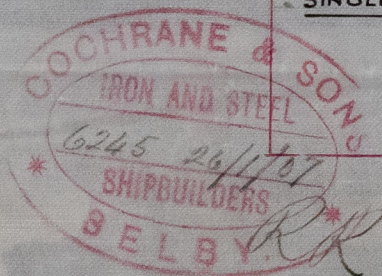
$\frac{1}{2}$ B	=	19.08
$\frac{1}{2}$ G	=	14.88
D	=	9.62
	=	33.58 1 <sup>ST</sup> N <sup>O</sup>
RULE LENGTH	=	83.06
	=	12789.15 2 <sup>ND</sup> N <sup>O</sup>

## PROPORTIONS.

L	=	8.6
D	=	4.5
B	=	

## EQUIPMENT

2.	BOWER ANCHORS	3 CWT EACH EX STOCK.
1	"	1 3/4 " " "
60	FATHOMS	12 " CHAIN CABLE
60	"	5 " HAWSER
60	"	2 1/2 " WARP.



*CH.*  
30-1-07.  
12-2-07



-Midship Section-  
Cochrane & Sons  
*Selby*

1/2 ss Nos. 405, 6, 7, 8 & 9 -

Nos 410, 411, and 412.

- 1/2 City of London Hull Rft No.
- City of Hull - - -
- City of Edinburgh - - -
- City of Perth - - -
- City of Liverpool - - -
- City of Glasgow - - -
- City of Belfast - - -
- City of Aberdeen - - -

D. S. 23

W1412-0038



© 2021

Lloyd's Register  
 Foundation