

N<sup>o</sup> 403 - S.S. "Chira"

$$3059 + 1\frac{1}{2}(13 \times 3) = 3117$$

3117

11.12.08  
29.12.08.

- NUMERALS -		
HALF GIRTH	16.45	16.545
HALF BEAM	9.50	9.625
DEPTH	8.14	8.140
FIRST NUMBER	34.08	34.340
LENGTH	89.11	89.11
SECOND NUMBER	3037.75	3059

$$\frac{L}{D} = 10.94 \quad \frac{L}{B} = 4.69$$

MIDSHIP SECTION

- OF A -

STEEL SCREW STEAMER

- TO CLASS 100A.I. LLOYDS -

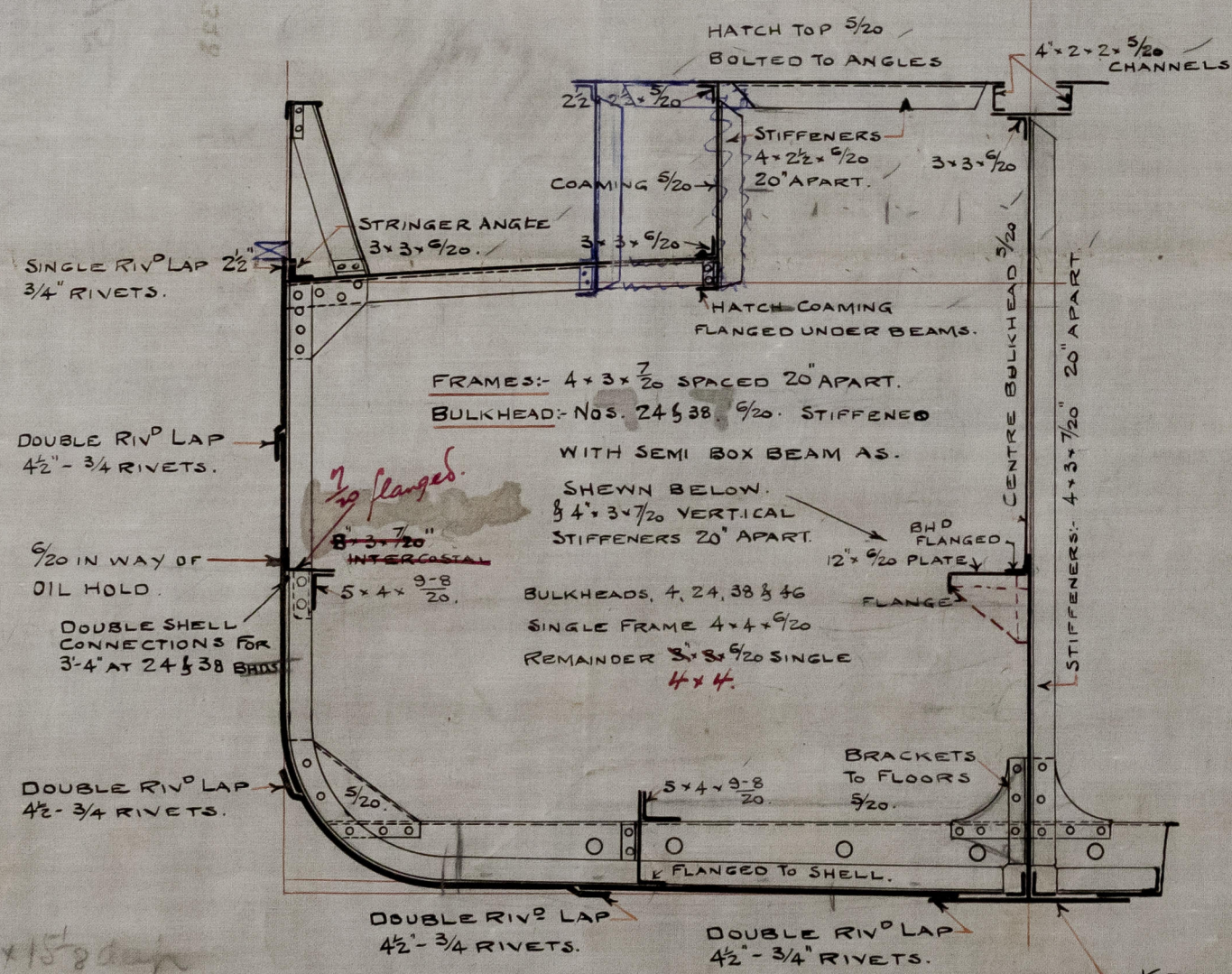
- CARRYING OIL IN BULK -

- DIMENSIONS: 90'0" BP x 19'0" MLD x 7'5" MOULDED -

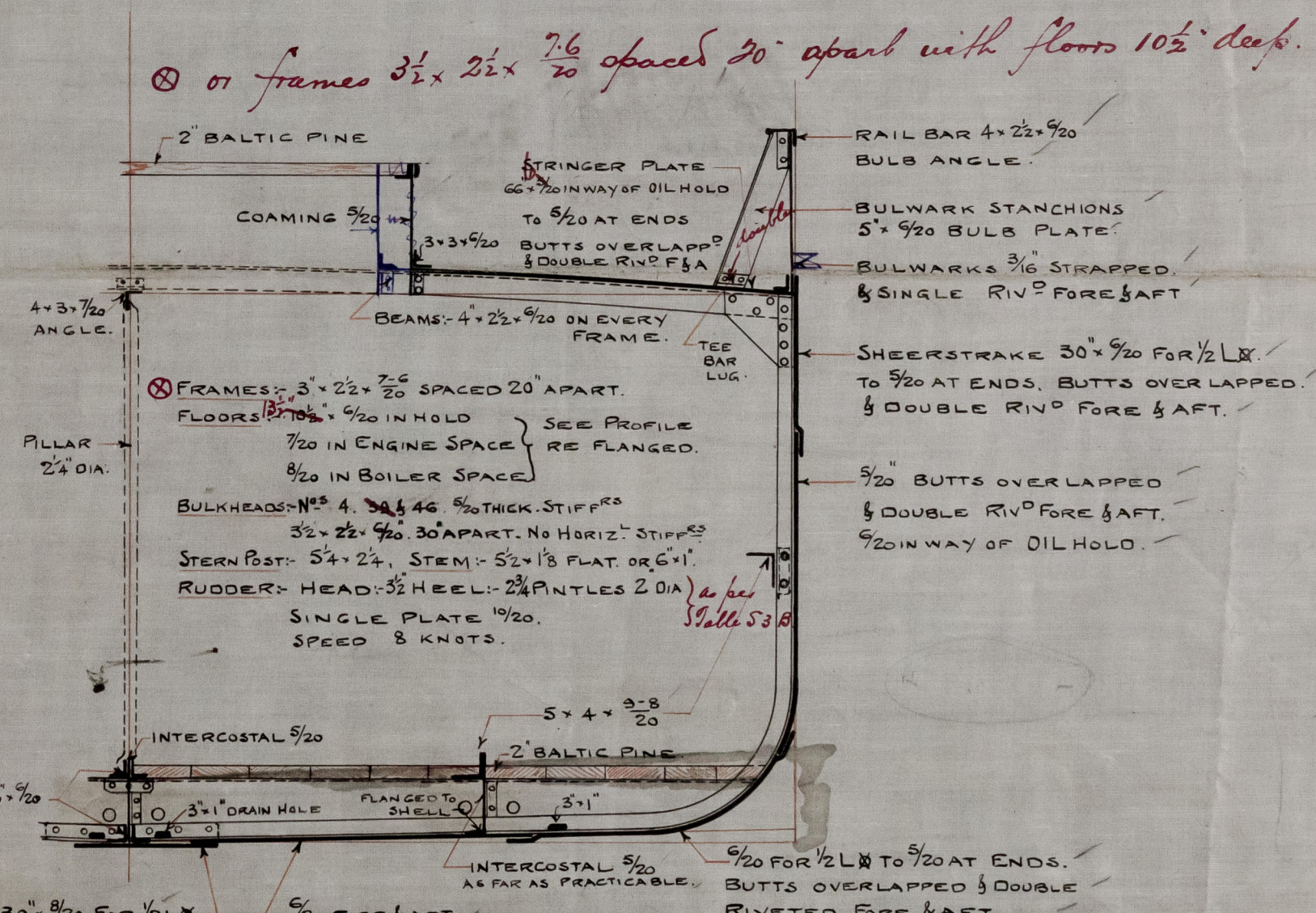
- SCALE 1/2 INCH -

EQUIPMENT No. 3061

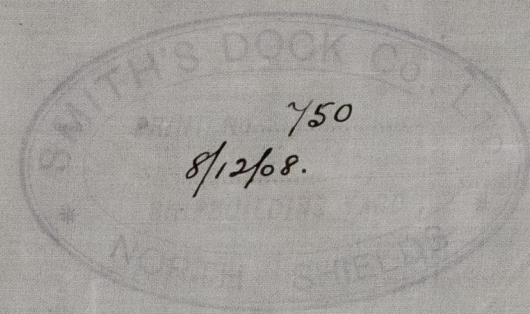
2 ANCHORS	3 1/2 CWTs EX STOCK.
1 "	3/4 " " "
1 "	1/2 " " "
120 FATHOMS	1/16" STUD LINK CABLE
45 "	2" STEEL WIRE.
75 "	2" " " "
90 "	3" MANILLA HAWSER.



SECTION IN WAY OF OIL HOLD



SECTION IN WAY OF CARGO HOLD



C.B.  
11.12.08.



S. S. CHIRA

J.I. "CHIRA"

Newcastle Report

SP<sup>o</sup> 56475

Newcastle-upon-Tyne

FREEBOARD REPORT No 56328

Lloyd's Register  
Foundation

W1406-0085