

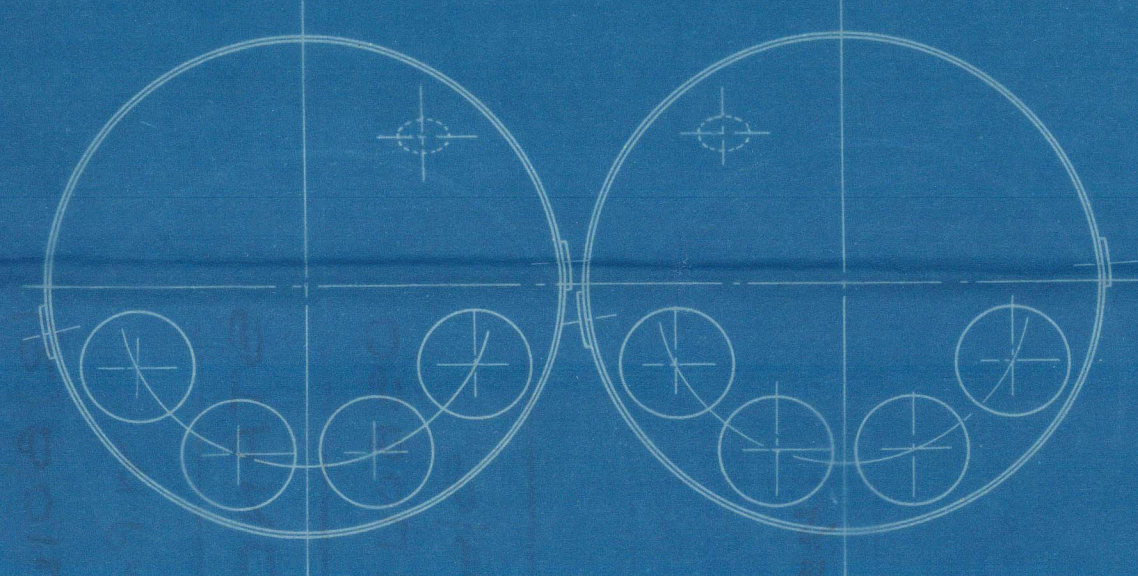
NO	DESCRIPTION	MINIMUM TENSILE STRENGTH
2	SHELL PLATES	28 3/4 TONS
1	FRONT TOP	26 "
1	FRONT BOTTOM	26 "
1	BACK TOP	26 "
1	BACK BOTTOM	26 "
2	BACK T.P. CENTRE	26 "
2	" " " WINGS	26 "
2	C.C. WRAPPER CENTRE	26 "
2	" " " WINGS	26 "
2	S. G. TOPS CENTRE	26 "
2	" " " WINGS	26 "
2	" " BACK CENTRE	26 "
2	" " " WINGS	26 "
20	GIRDERS	28 "
2	SHELL BUTT STRAPS (IN)	28 3/4 "
2	" " (OUT)	28 3/4 "
4	FURNACES	26 "
	STEAM SPACE STAYS	28 3/4 "
	SCREWED STAYS	26 "
	RIVETS	27 "
4	M. NIELS MANHOLE DOORS	

# BOILER.

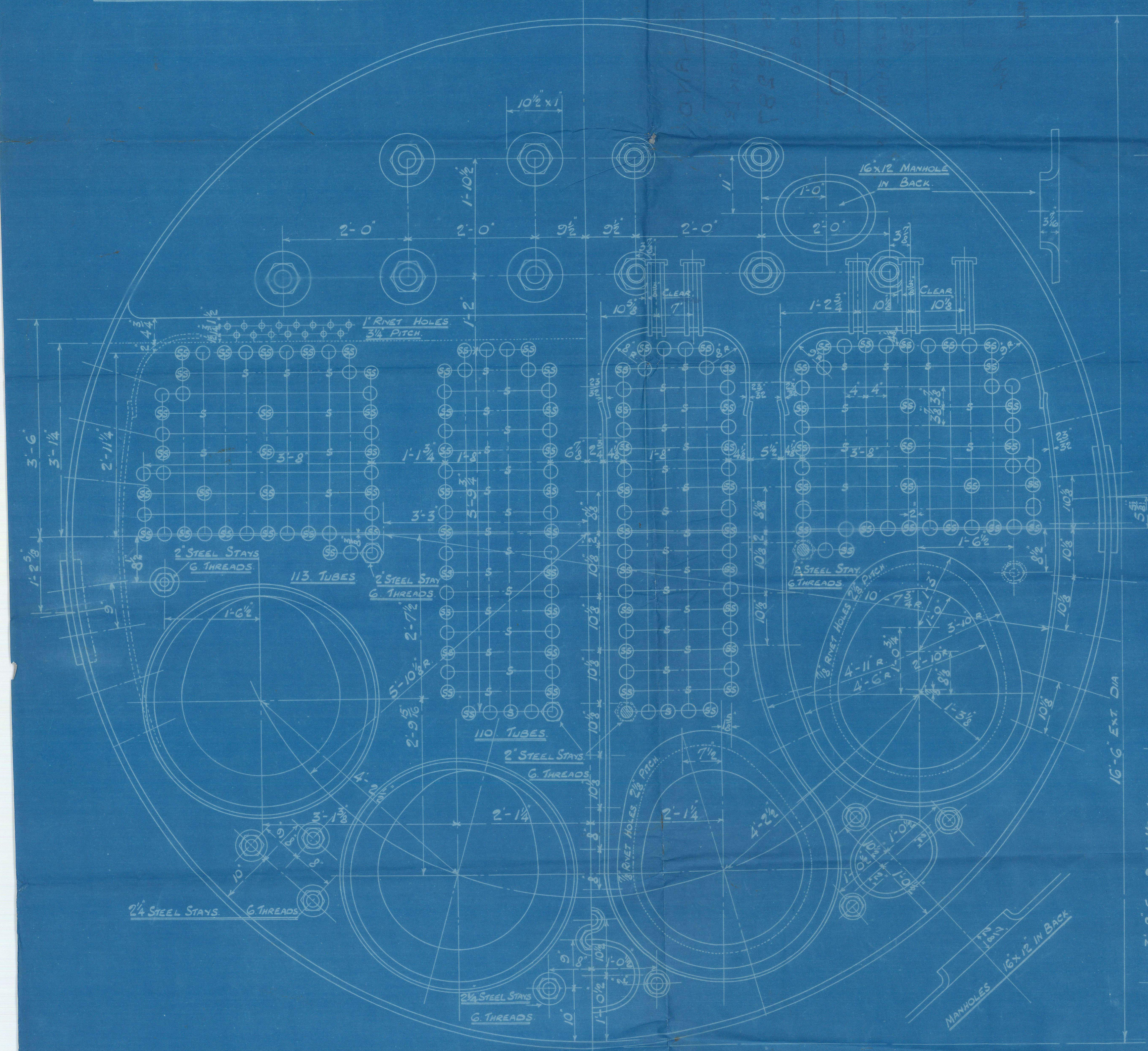
SCALE, 1" = 1 FOOT.

% STRENGTH OF PLATE = 86.33  
 % RIVETS = 87.6  
 SHELL (LLOYD'S) = 22.58 (21.5-2) 85.33 192 LBS.  
 195.3125

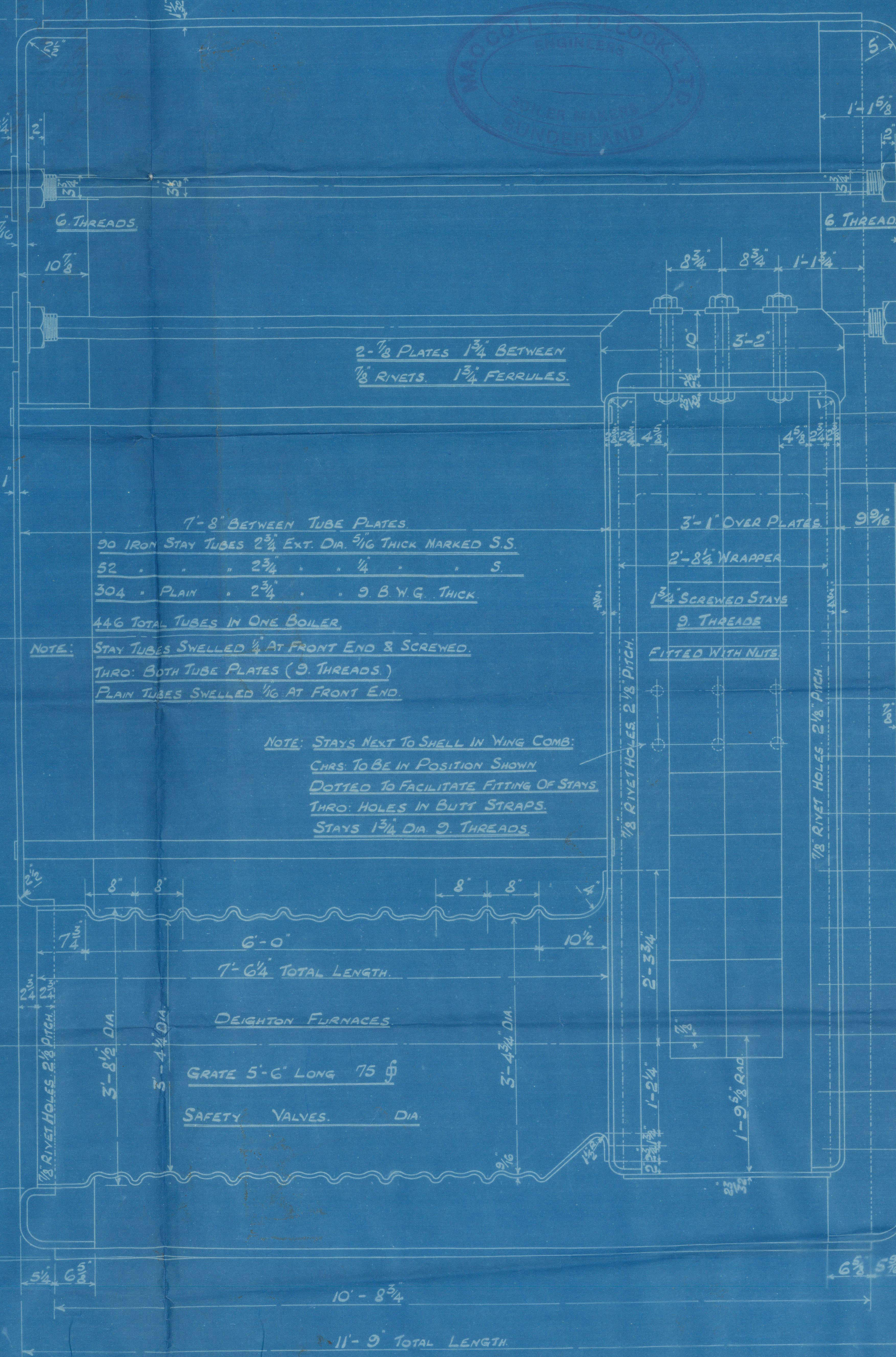
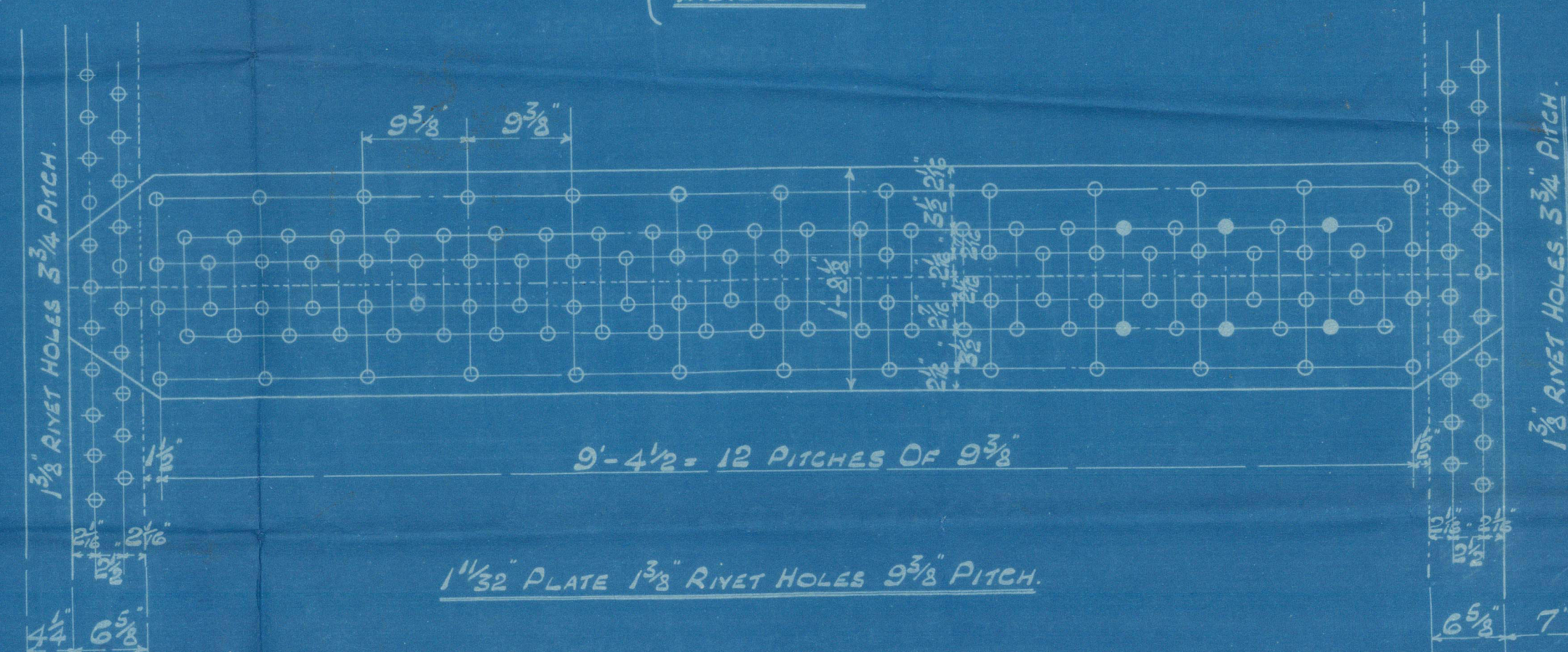
APPROVED BY BUREAU VERITAS 5.4.17  
 BRITISH CORPORATION 5.4.17  
 LLOYD'S 12.4.17



SKETCH SHOWING POSITION OF STRAPS & MANHOLE IN BACK AT TOP  
 2 BOILERS THUS TO EACH C.N.



BUTT STRAPS { OUTSIDE 1 1/2"  
 INSIDE 1 1/2"



LLOYD'S SURVEY  
 HEATING SURFACE ON TUBES BETWEEN T PLATES = 2461 sq  
 ELSEWHERE INCLUDING T PLATES = 592 sq  
 TOTAL = 3053 sq

STEAM SPACE = CUB. FT.  
 WORKING PRESSURE 180 LBS.  
 TEST 360 "

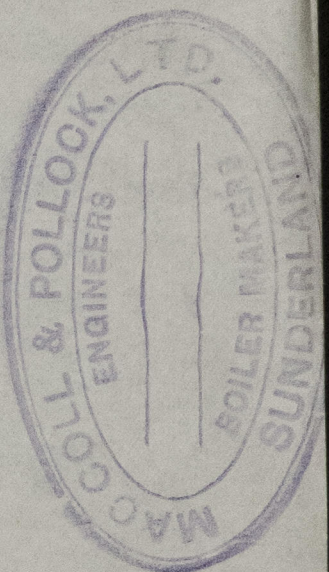
NOTE ALL PLATES STAYS ETC. TO BE OF STEEL SMOKE TUBES OF IRON  
 TENSILE STRENGTH OF SHELL PLATING TO BE FROM 28 3/4 TO 35 TONS  
 ALL HOLES DRILLED IN PLACE AFTER PLATES ARE BENT



CONTRACT NO. 287-7.



W1387-0041



SUNDERLAND

MACCALL & POLLOCK L<sup>TD</sup>

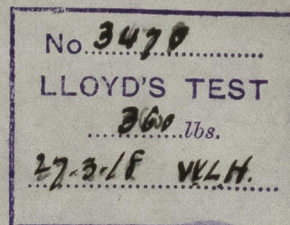
(2) BOILERS N<sup>o</sup> 287

W.P. = 180 LBS

STANDARD "D"

OSBOURNE GRAHAM & CO<sup>LD</sup>

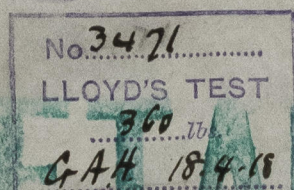
S/S N<sup>o</sup> 238



Prvt



W1387-0041



Stair

War Battery

SUNDERLAND RPT. No. 27246

© 2021

Lloyd's Register  
Foundation