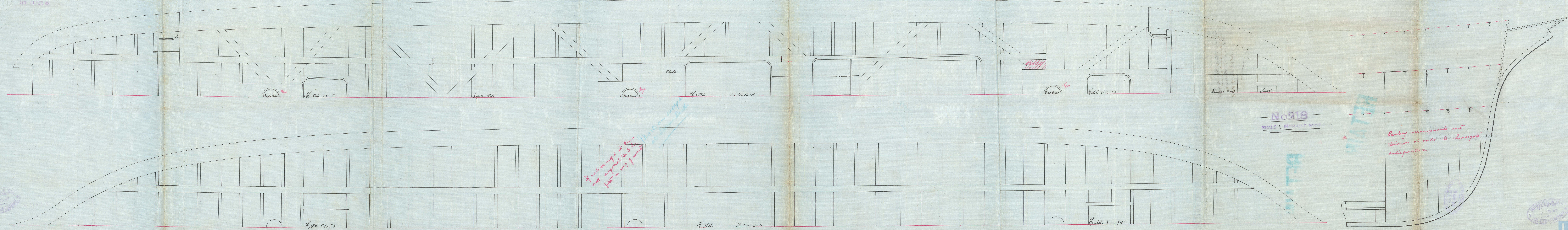


THU 21 FEB 89

Steel Ship Port Patrick "Edenballymore"
Greenock Reports Nos 9828, 9908.



If masts are raised at lower deck, diagonal tie to be fitted in way of masts

Masts are raised at lower deck

No 218
SCALE 1/4 INCH ONE FOOT

Banking arrangements and stowage at ends to be satisfactory



Steel Ships Port Patrick
Adenbarymore
Greenock Reports
No. 9828, 9908.

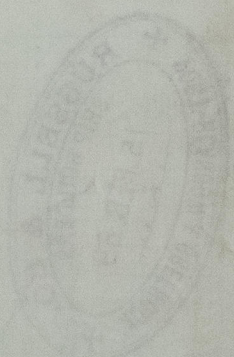
SCALE 1/4 INCH = 1 FOOT
No. 318

RETAIN

RETAIN

W1382-0017

RECEIVED
19 FEB. 89
LONDON



Handwritten signature or initials.



© 2021
Lloyd's Register
Foundation