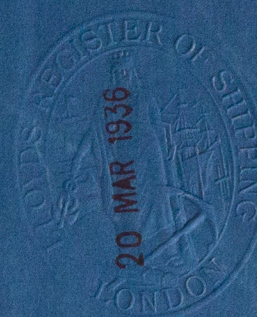
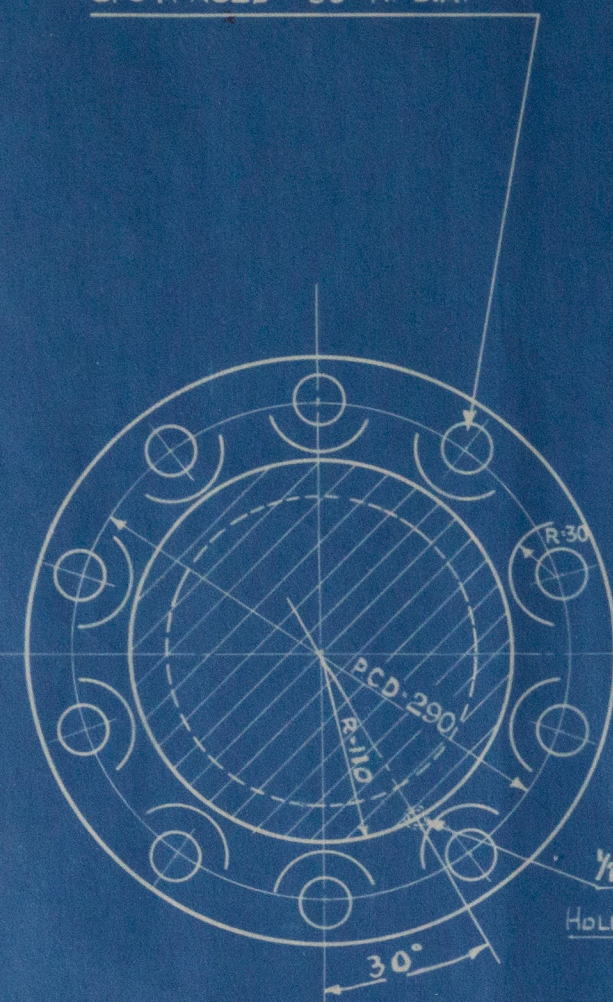


50435

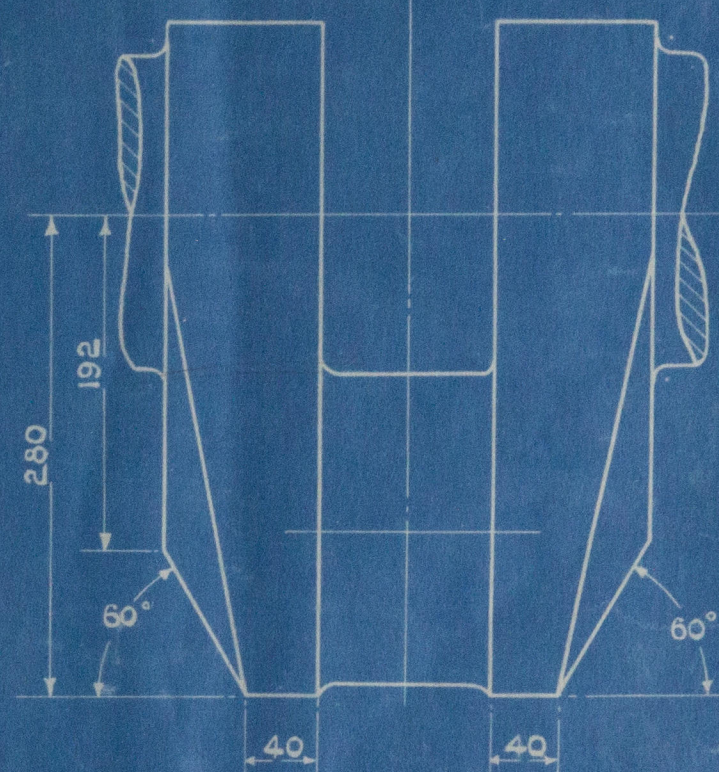
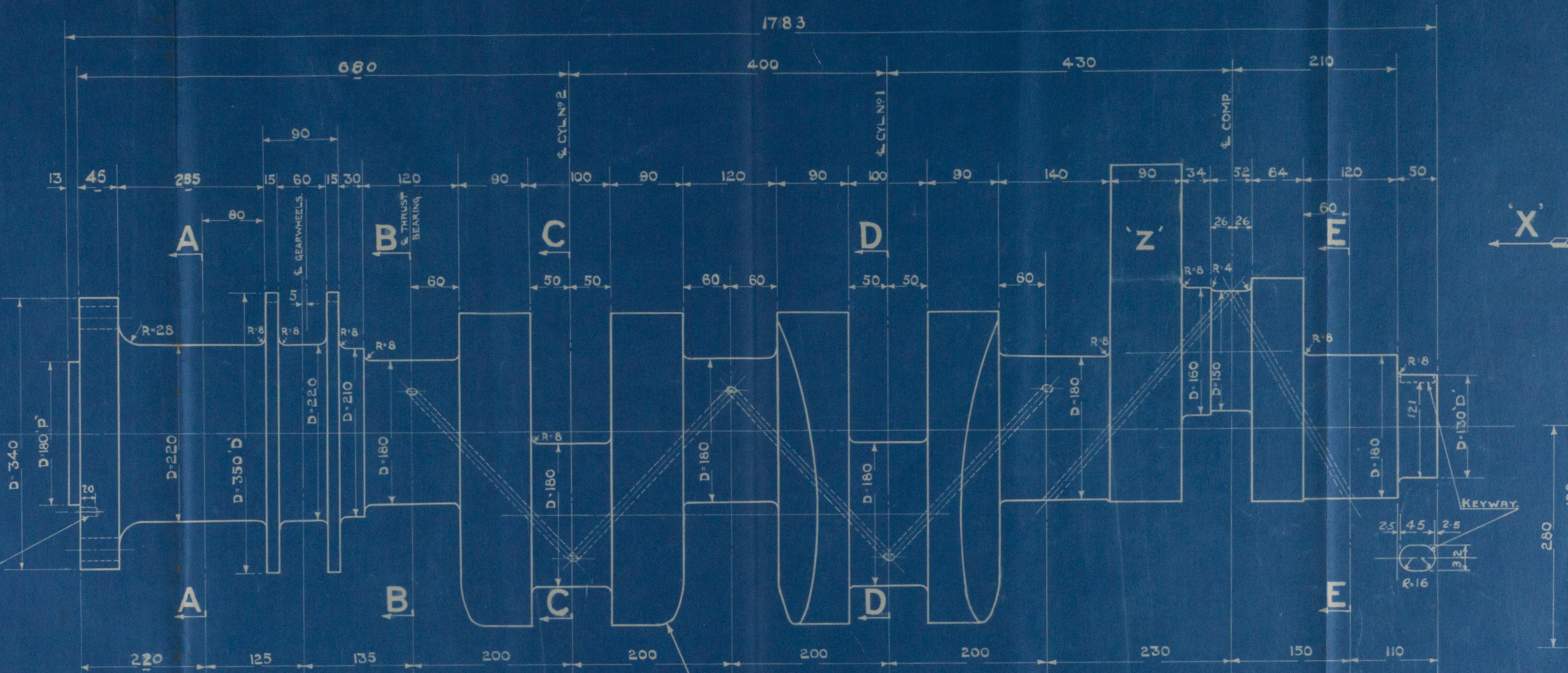


10 HOLES FOR 1 1/8" FITTED BOLTS

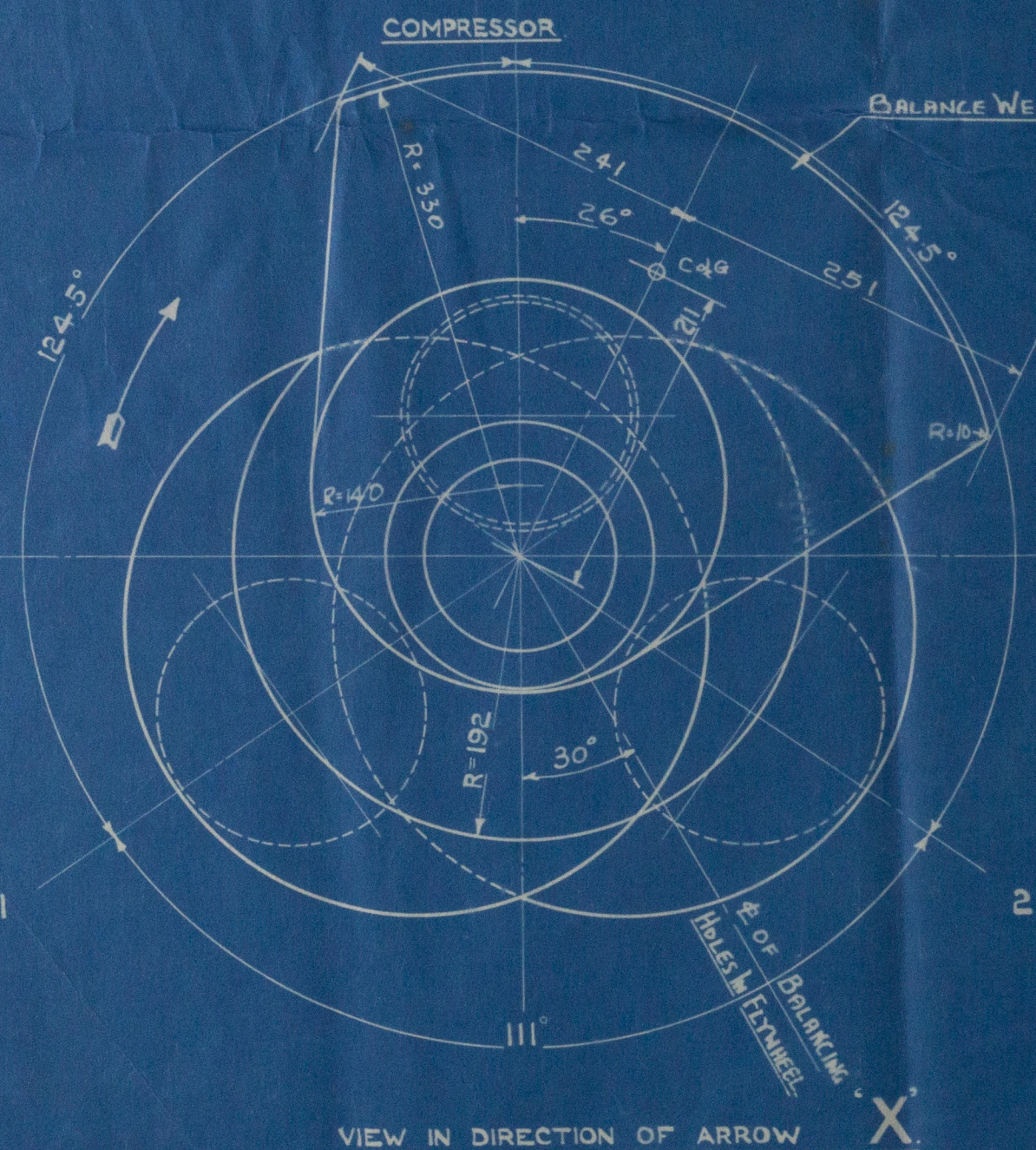
SPOTFACED 60% DIA.



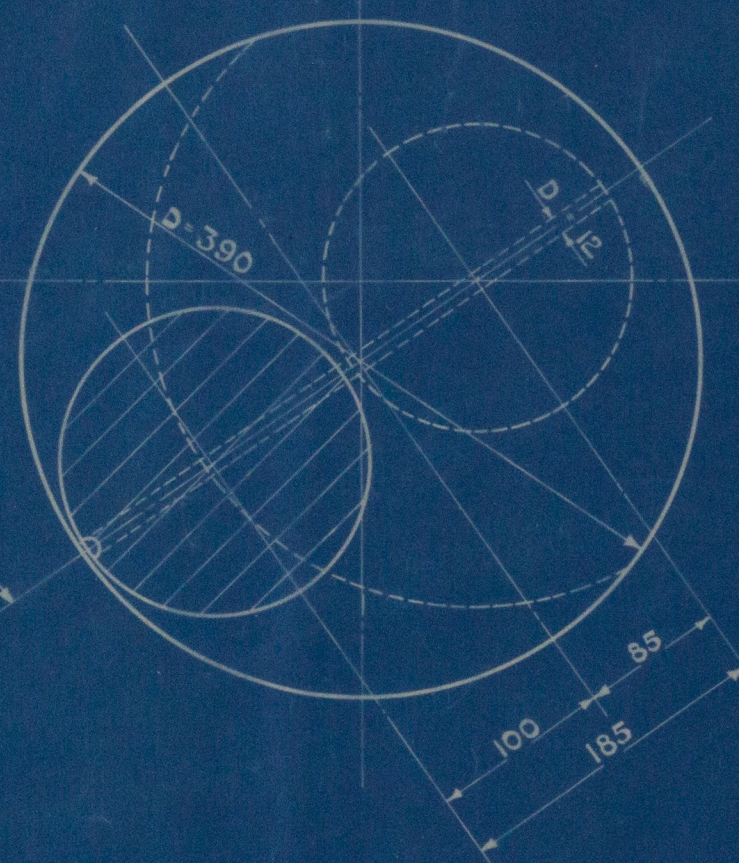
SECTION AA



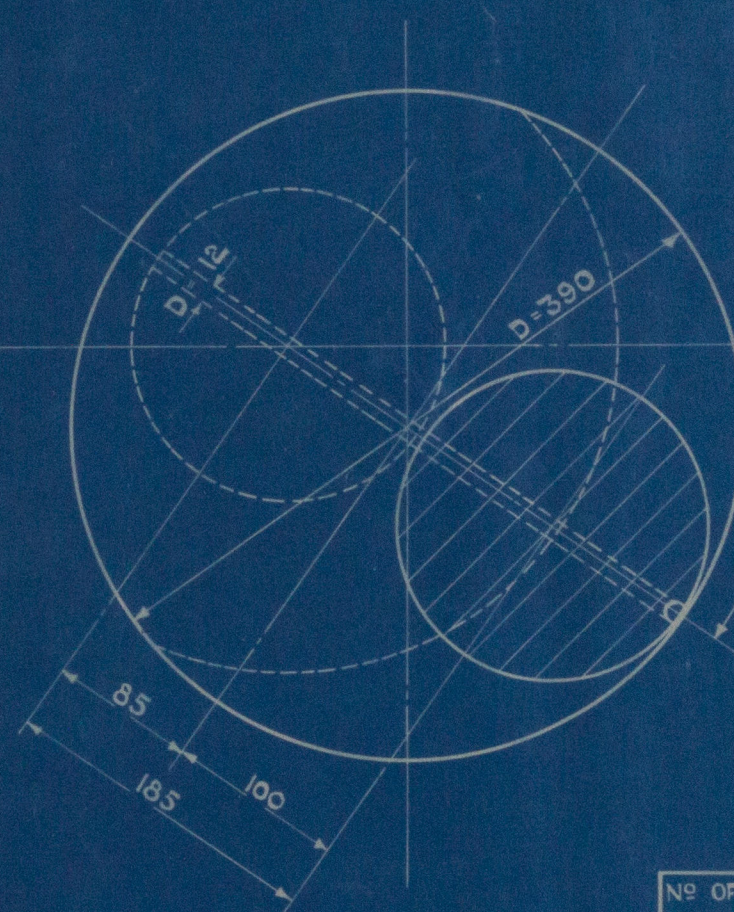
VIEW OF CRANKPIN ON B.D.C.



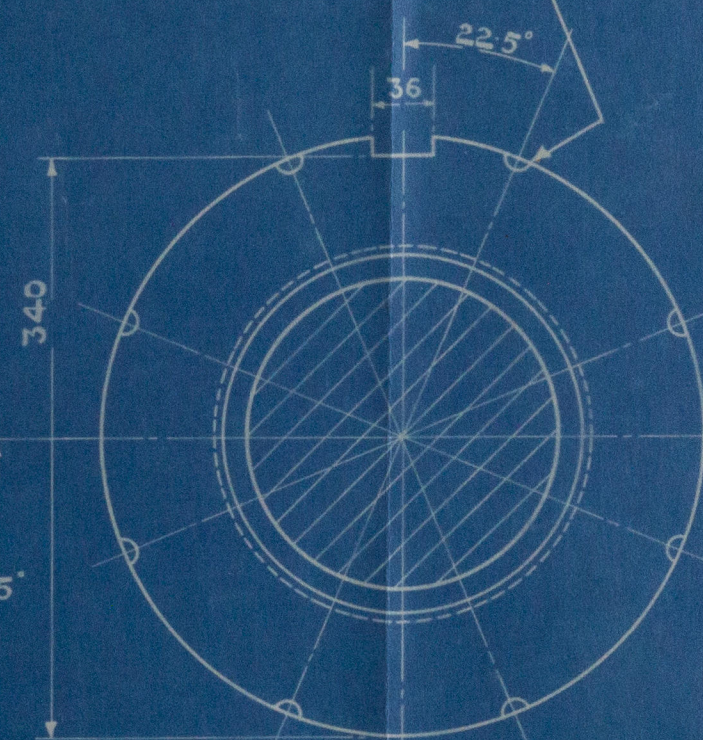
VIEW IN DIRECTION OF ARROW X



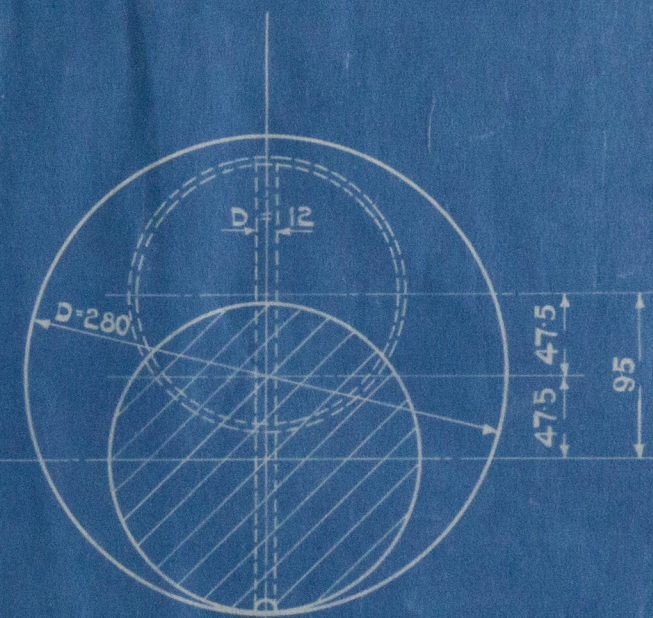
SECTION DD



SECTION CC



SECTION BB



SECTION EE

87576 MACHINED ALL OVER

8 HOLES FOR 13/16" FITTED BOLTS  
DRILLED & REAMED WITH GEAR  
WHEEL IN POSITION.

BALANCE WEIGHT ON WEB MARKED 'Z'

COMPRESSOR

NEWELL STANDARD LIMITS TO BE USED						
NO OFF PER ENG	DESCRIPTION	PATTERN NUMBER	MATERIAL	WT IN KGS	REMARKS	SHOP
1	CRANKSHAFT	87576	SEIMENS MARTIN STEEL	746		

WT OF UNBALANCED CRANK = 113 KGS.

WEIGHT OF ONE CRANK = 202 KGS.

FULL SIZE PART SECTION OF  
ENDS OF OIL WAYS

TR. 2 <sup>220</sup>/<sub>370</sub> 2 CP

CRANKSHAFT

CODE No 0421

SCALE = 1:4

W138-0188



50435

B.V. Cooper  
19-6-35



Harland & Wolff Ltd.

Yard No. 983

Aug. engine crank shaft.

"WALMER CASTLE" Bel 11852.

GLASGOW REPORT No. 57599

W138-0188



© 2020

Lloyd's Register  
Foundation