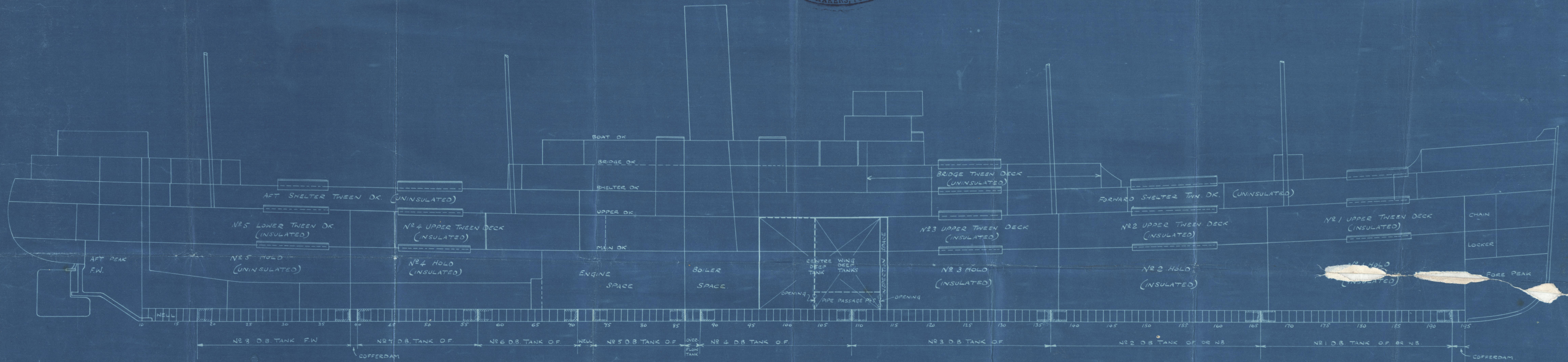
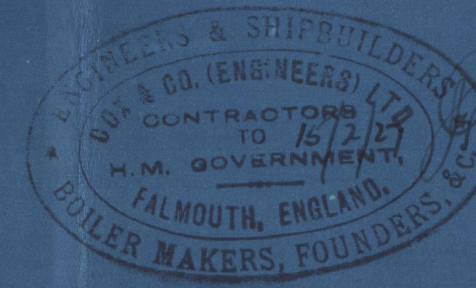


S. S. WESTMORELAND.

SUBDIVISION PROFILE.

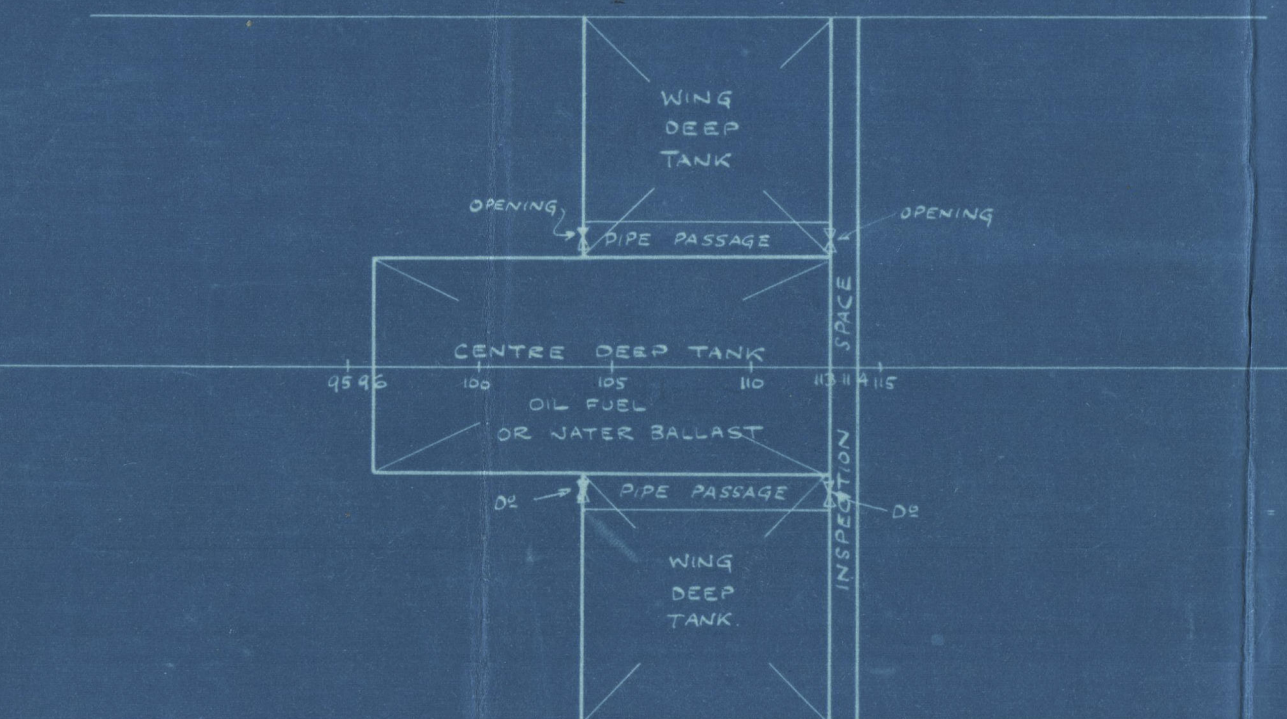
PROPOSED ARRANGEMENT OF OIL FUEL BUNKERS.

SCALE 1/6" = 1 FOOT.

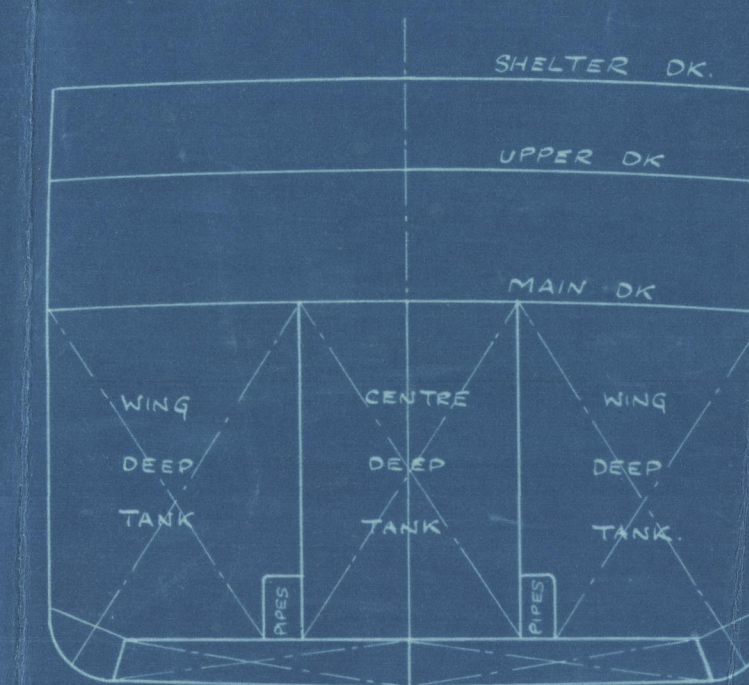


OIL FUEL CAPACITIES		
DESCRIPTION	FRAMES	TONS (2,240 LBS. PER TON)
NO. 1 D.B. TANK	166-191	117.0
" 2 "	134-166	284.0
" 3 "	109-134	308.5
" 4 "	88-109	229.0
OVERFLOW	86-88	22.0
NO. 5 D.B.	78-86	118.0
" 6 "	57-78	140.5
" 7 "	40-57	134.0
TOTAL CAPACITY D.B. TANKS		1353.0
CENTRE DEEP TANK	96-113	534.0
WING DEEP TANK	104-113	318.0
" 2 "	104-113	318.0
TOTAL OIL FUEL IN SHIP		2523.0

NO. 8 D.B. TANK F.W.	18-39	82 TONS
AFT PEAK F.W.	0-10	95 TONS



PLAN AT MAIN DECK.



SECTION THRO' DEEP TANKS.



S. S. WESTMORELAND
SUB-DIVISION PROFILE

Fal Rpt No 6668

W138-0064



© 2020

Lloyd's Register
Foundation