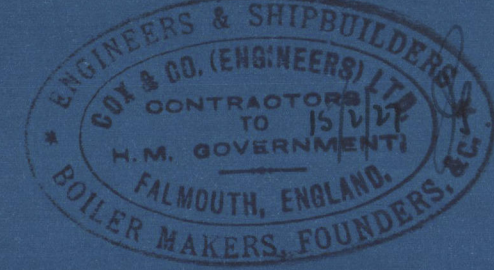


S.S. WESTMORELAND.

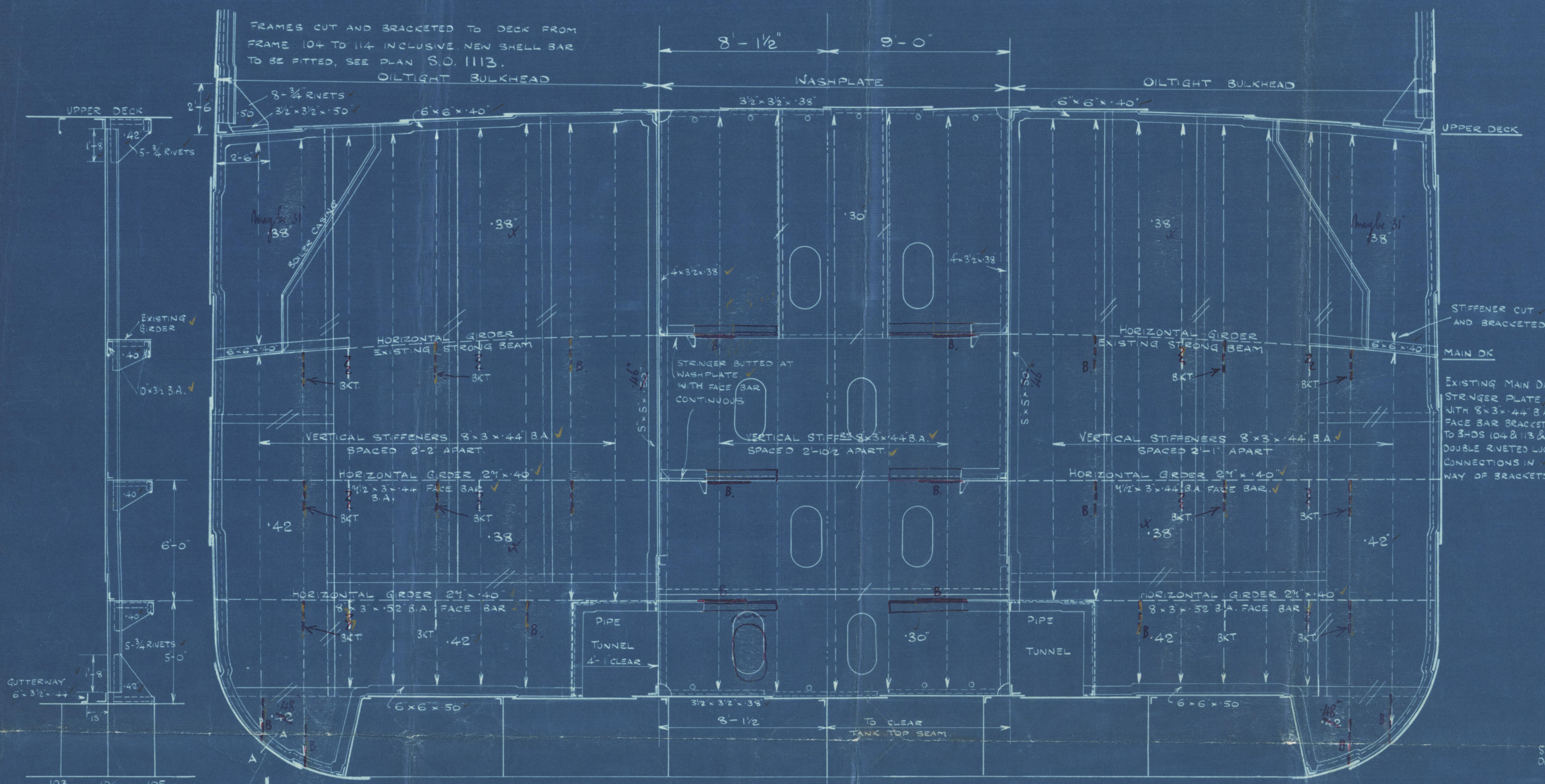
OIL FUEL DEEP TANKS.

SCALE $\frac{1}{4}$ " = 1 FOOT.

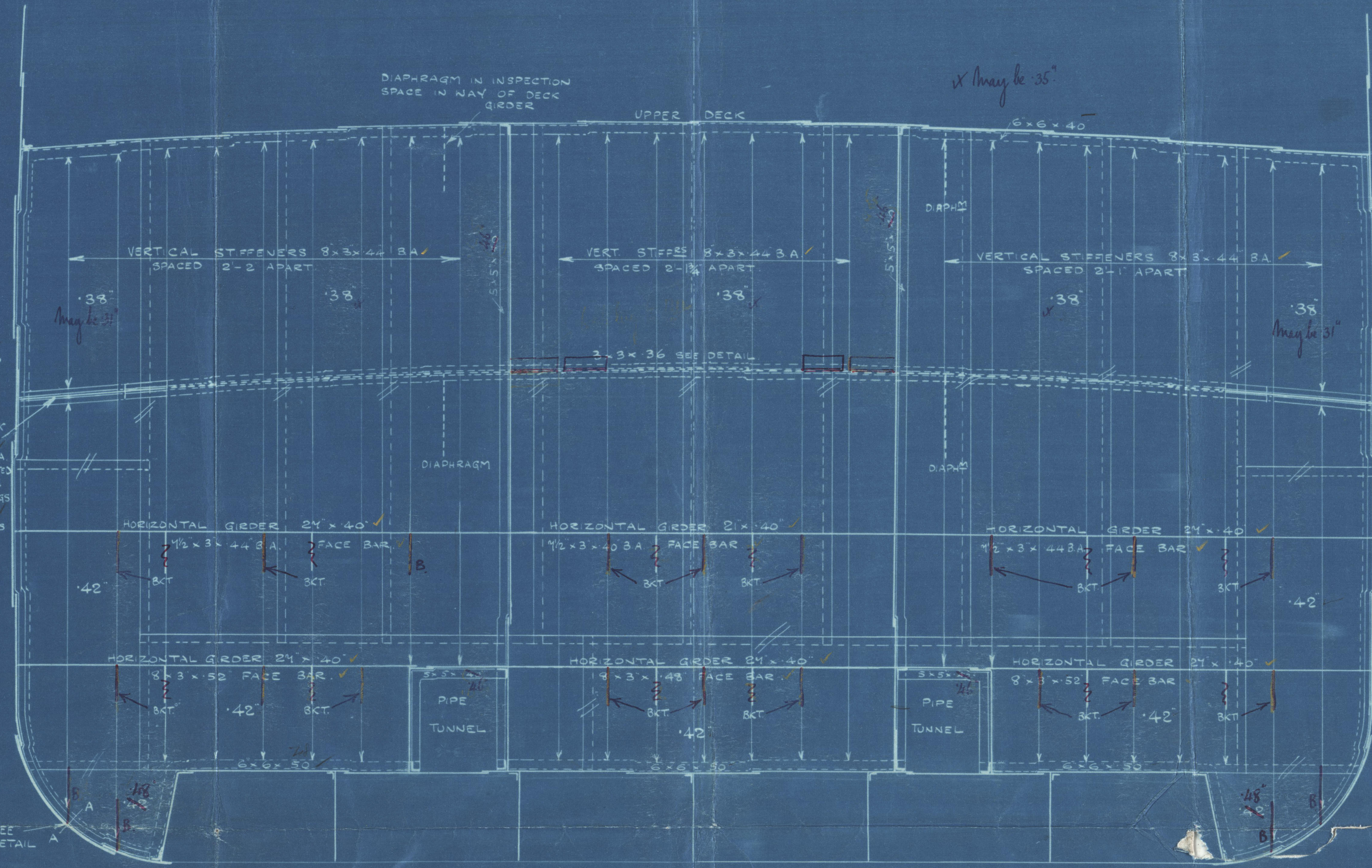


RIVETING NOTES ETC:- FRAME SPACING 2' 1/2. FRAMES 6 1/2" x 3 1/2" x 4 1/2". REV FRAMES 7" x 3 1/2" x 4 1/2".

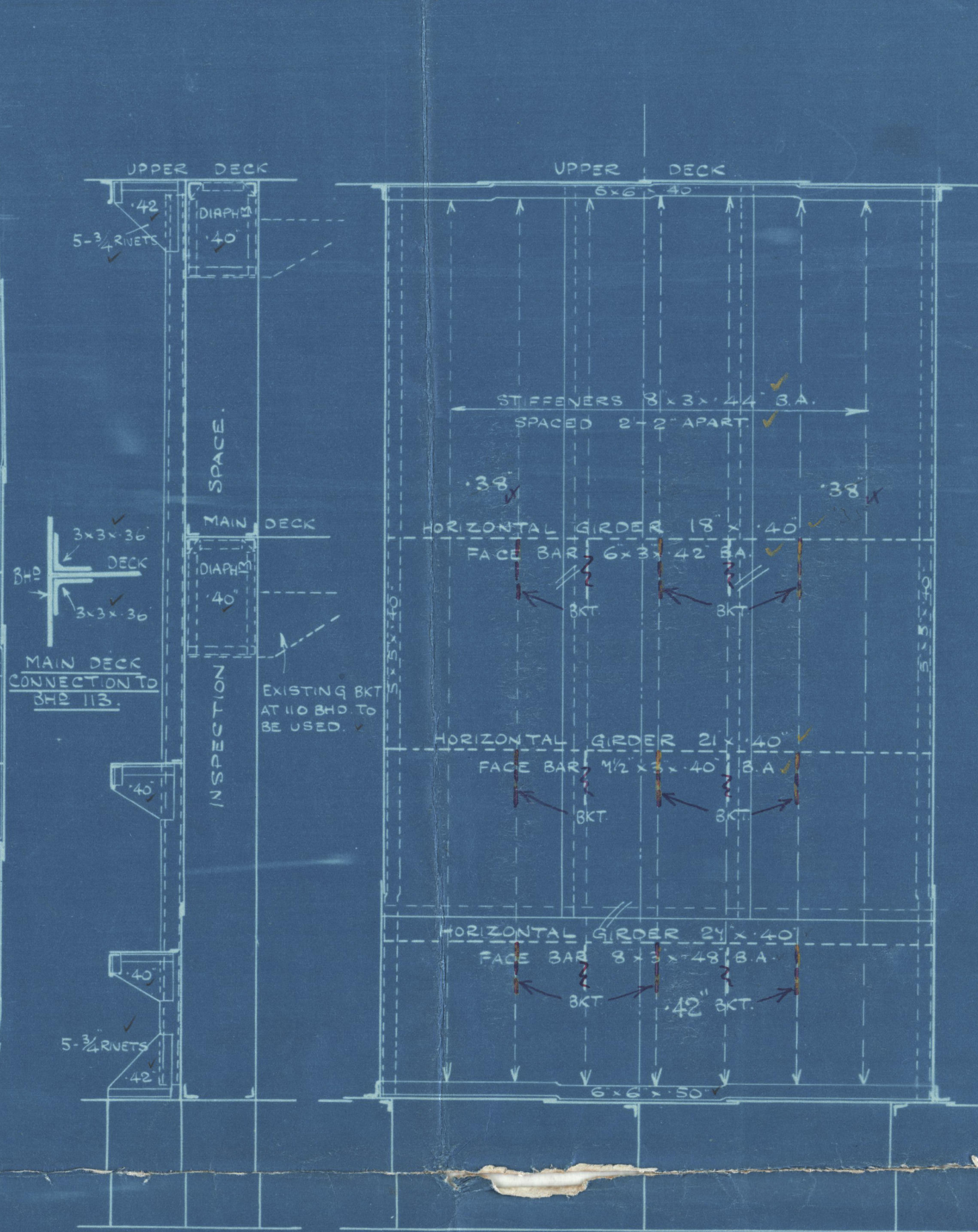
ALL SEAMS & BUTTS IN OT BULKHEADS DOUBLE RIVETED, SPACED 3 1/2 DIARS. SEAM & BUTTS IN NASHPLATE SINGLE RIVETED SPACED 5 DIARS. SEAM IN TUNNEL DOUBLE RIVETED SPACED 3 1/2 DIARS. BOUNDARY BARS DOUBLE RIVETED SPACED 5 DIARS. RIVETS IN VERTICAL STIFFENERS SPACED 6 DIARS. EXCEPT WHERE NO BRACKET ATTACHMENT IS FITTED WHERE THEY ARE TO BE 4 DIARS APART FOR A DEPTH OF 2' 6". RIVETS IN VERTICAL STIFFENERS OF NASHPLATE SPACED 7 DIARS. RIVETS IN HORIZONTAL GIRDERS SPACED 4 1/2 DIARS, TO BULKHEAD & 6 DIARS, TO FACE BARS. HOLES FOR RIVETS IN WAY OF EXTERNAL BRACKETS ALSO ALL CORNER BRACKETS CONNECTING SHELL AND BULKHEADS TO BE DRILLED. ALL CORNER BRACKETS NOT SHOWN OTHERWISE TO BE TWICE THE DEPTH OF THE LARGER GIRDER WHERE GIRDERS OF DIFFERENT SIZES MEET, MEASURED FROM THE BHD. DEPTH OF TANK AT CENTRE LINE = 23'-3 1/2". 30% OF DEPTH = 8'-10 1/2". HEIGHT OF OVERFLOW ABOVE CROWN = 4'-6". TANKS TO BE TESTED TO A HEIGHT OF 150" ABOVE CROWN. SECTION 35 OF THE RULES TO BE COMPLIED WITH WHERE APPLICABLE. FLASH POINT OF OIL FUEL NOT TO BE BELOW 150° FAH.



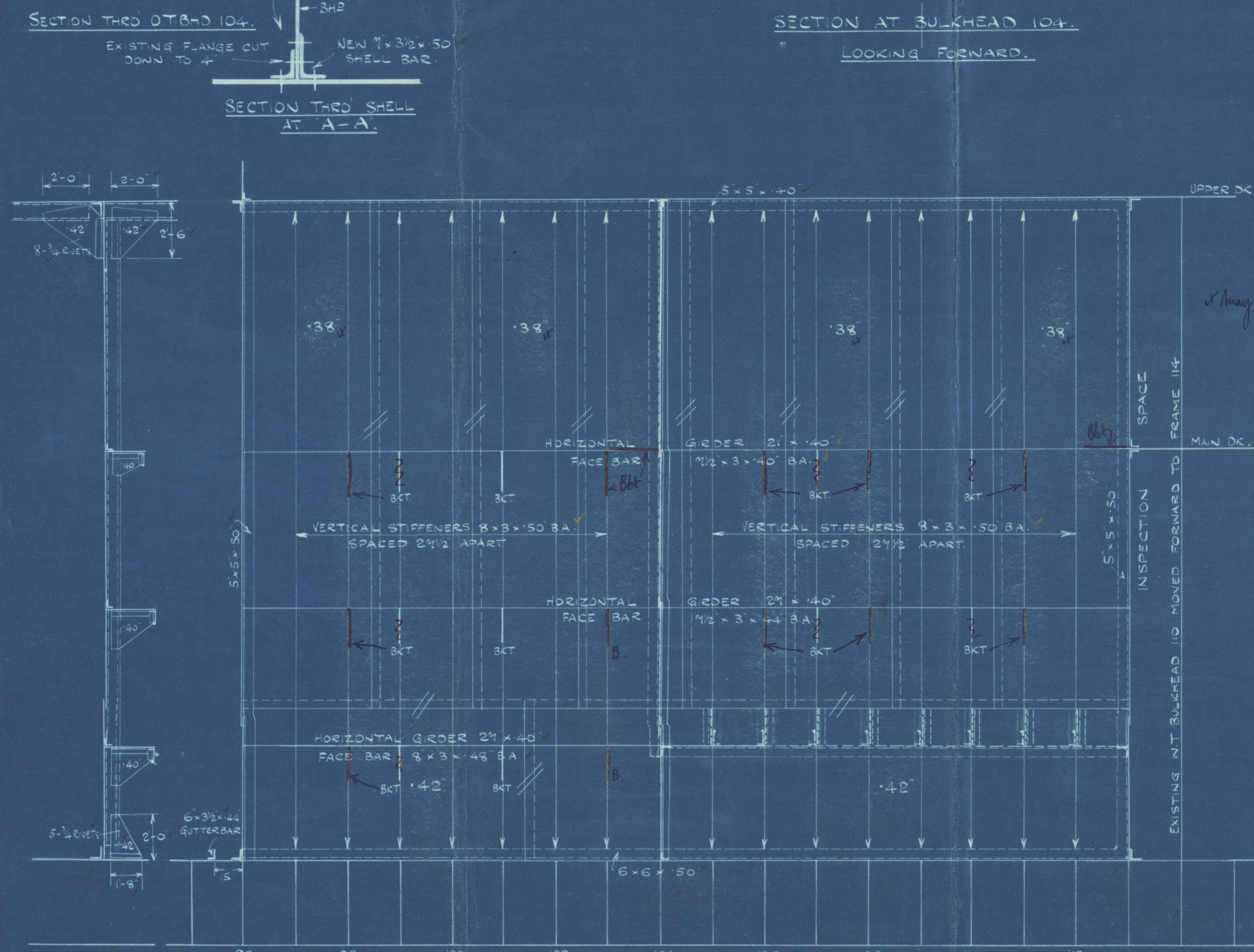
SECTION AT BULKHEAD 104.
LOOKING FORWARD.



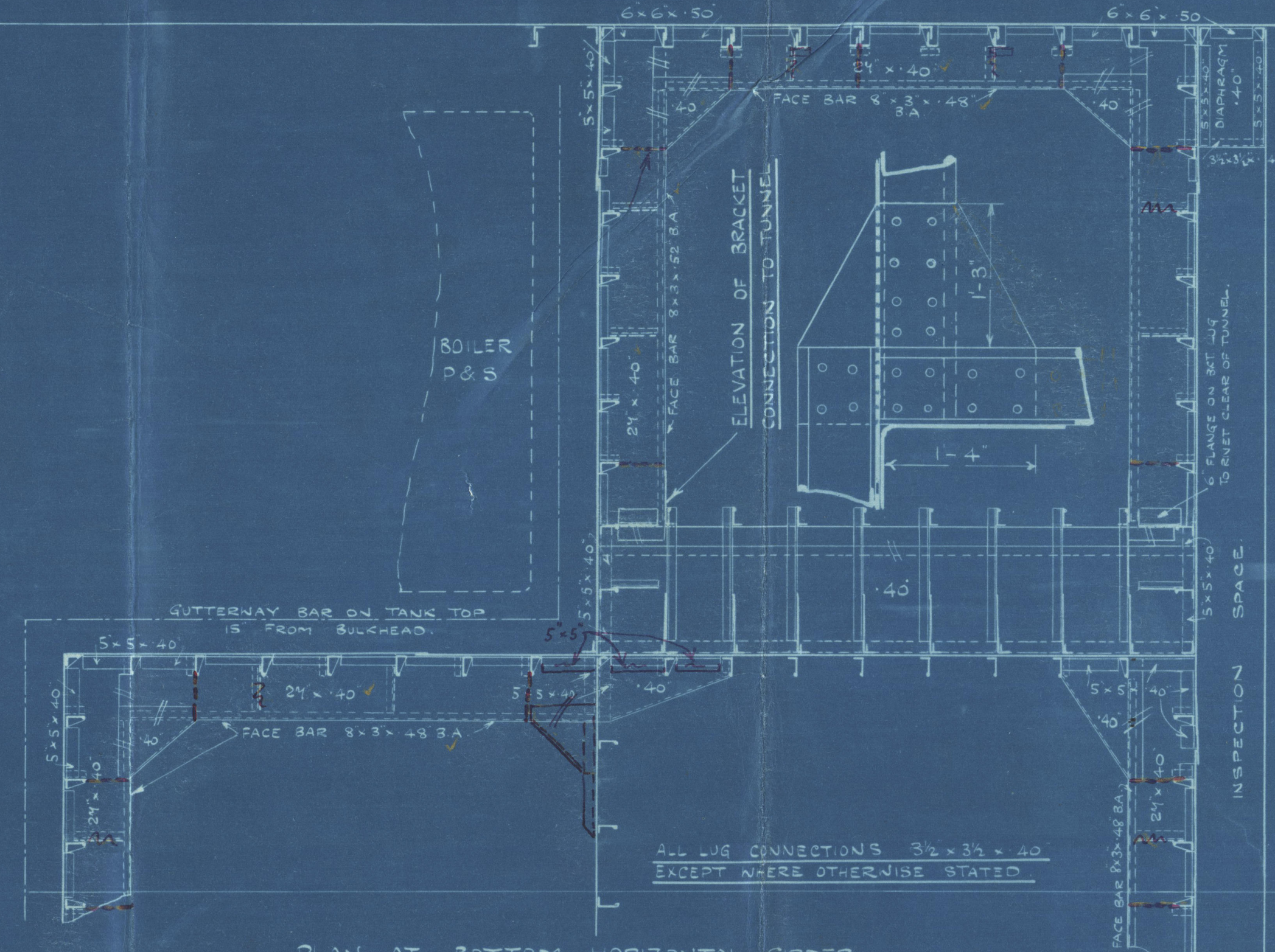
SECTION AT OT BULKHEAD 113.
LOOKING FORWARD.



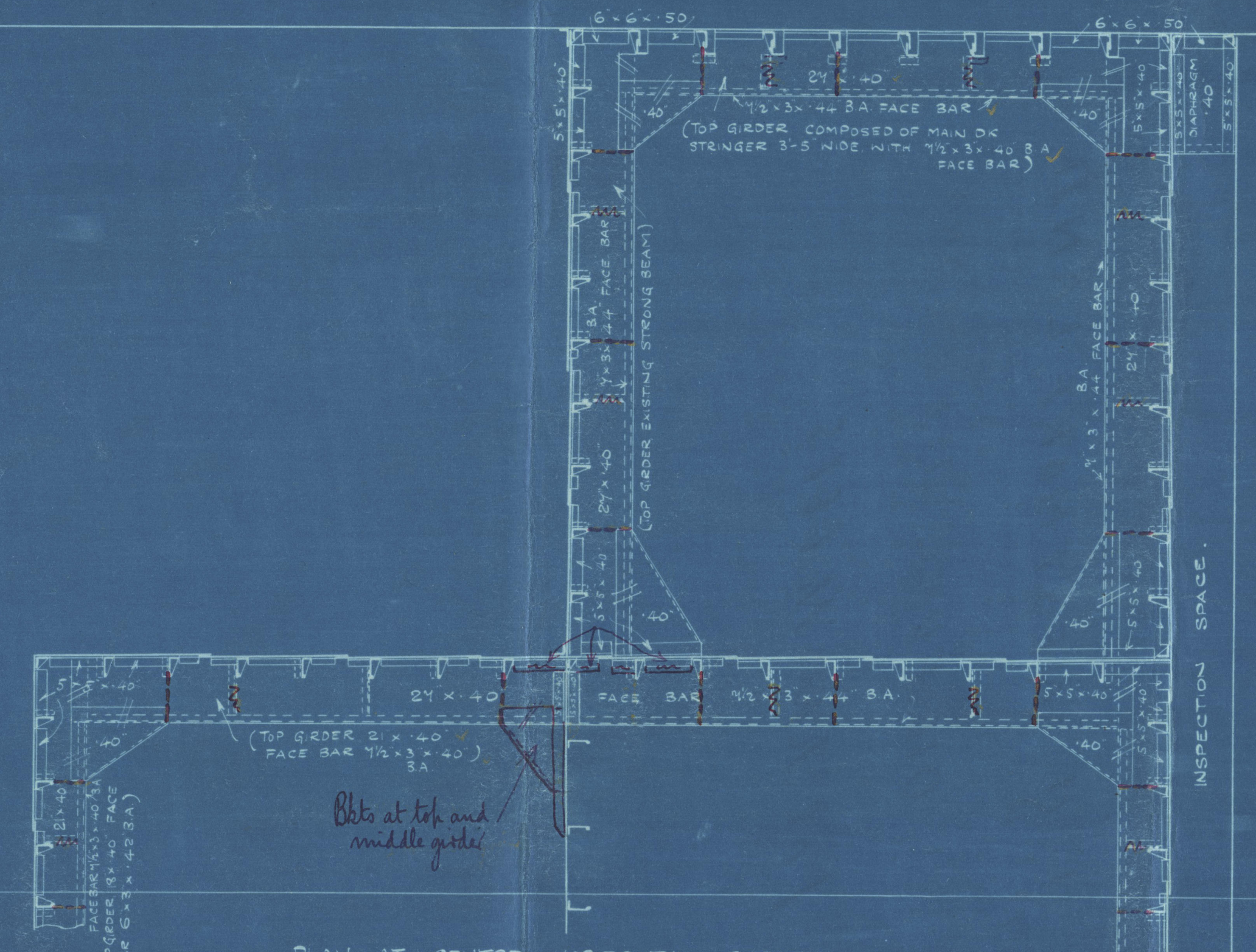
SECTION THRO' 113 BULKHEAD.
LOOKING FORWARD.



ELEVATION OF PORT LONGITUDINAL BULKHEAD.
LOOKING OUTBOARD.

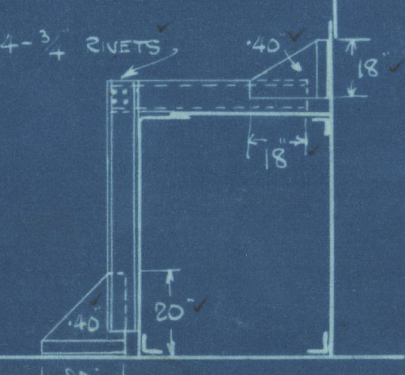


PLAN AT BOTTOM HORIZONTAL GIRDER.

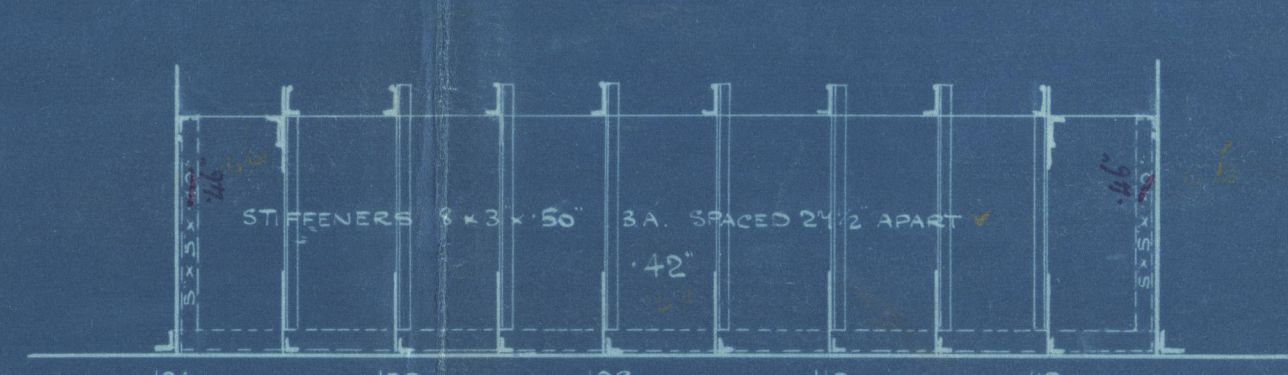


PLAN AT CENTRE HORIZONTAL GIRDER.

SECTION THRO' PORT
LONGITUDINAL BULKHEAD



SECTION THRO' PIPE TUNNEL



ELEVATION OF STARBOARD PIPE TUNNEL
LOOKING TO PORT.

S.O. 1112.



© 2020 Lloyd's Register Foundation
W138-0063

S. S. WESTMORELAND

OIL FUEL DEEP TANKS

Fal Rpt No 6668

W138-0063



© 2020

Lloyd's Register
Foundation