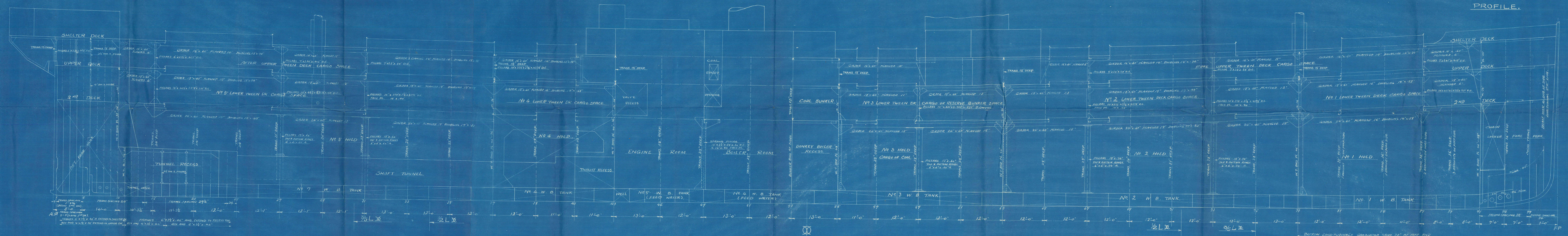
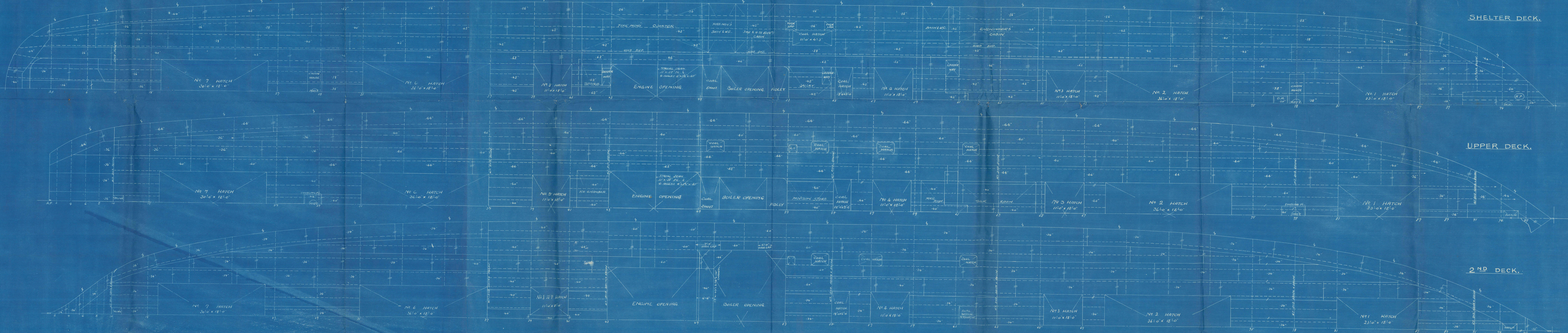


Nº 878.
T.S.S. ALPSMARU.
—STRUCTURAL ARRANGEMENT.—
SCALE 1/8 IN TO ONE FT.



NOTE: DOUBLE END BULKHEADS CONTAINING TANKS TO BE SET OUT.
SPRINKLER SYSTEM TO BE SET OUT.
HULL PLATING TO BE SET OUT.
HULL PLATING TO BE SET OUT.



J. S. S. Mps Marin
Osaka Iron Works Ltd
No. 878 S/S
Profile + Decks.
Rebe Rpt No. 2140



RETAIN R

© 2021

Lloyd's Register