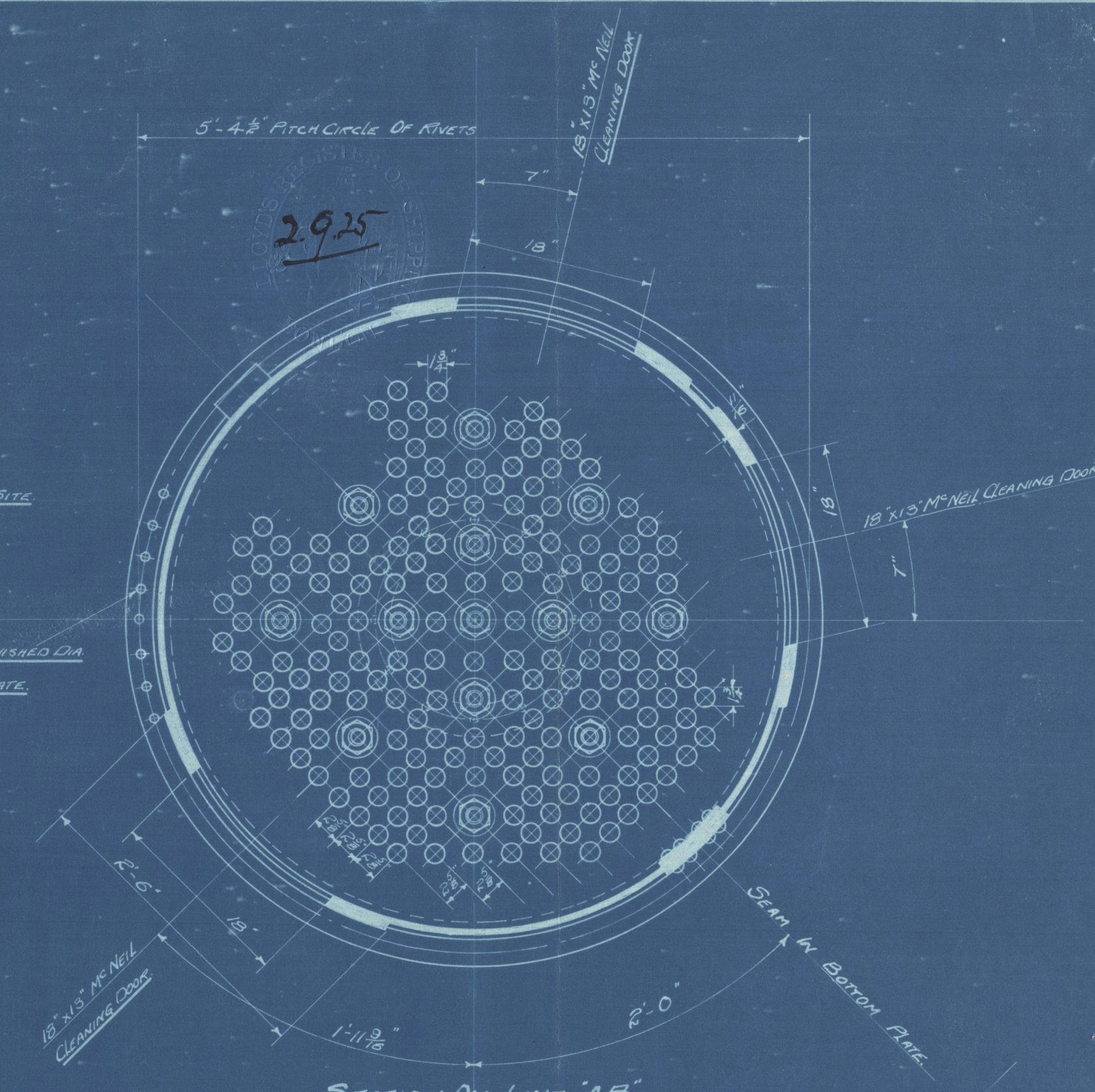
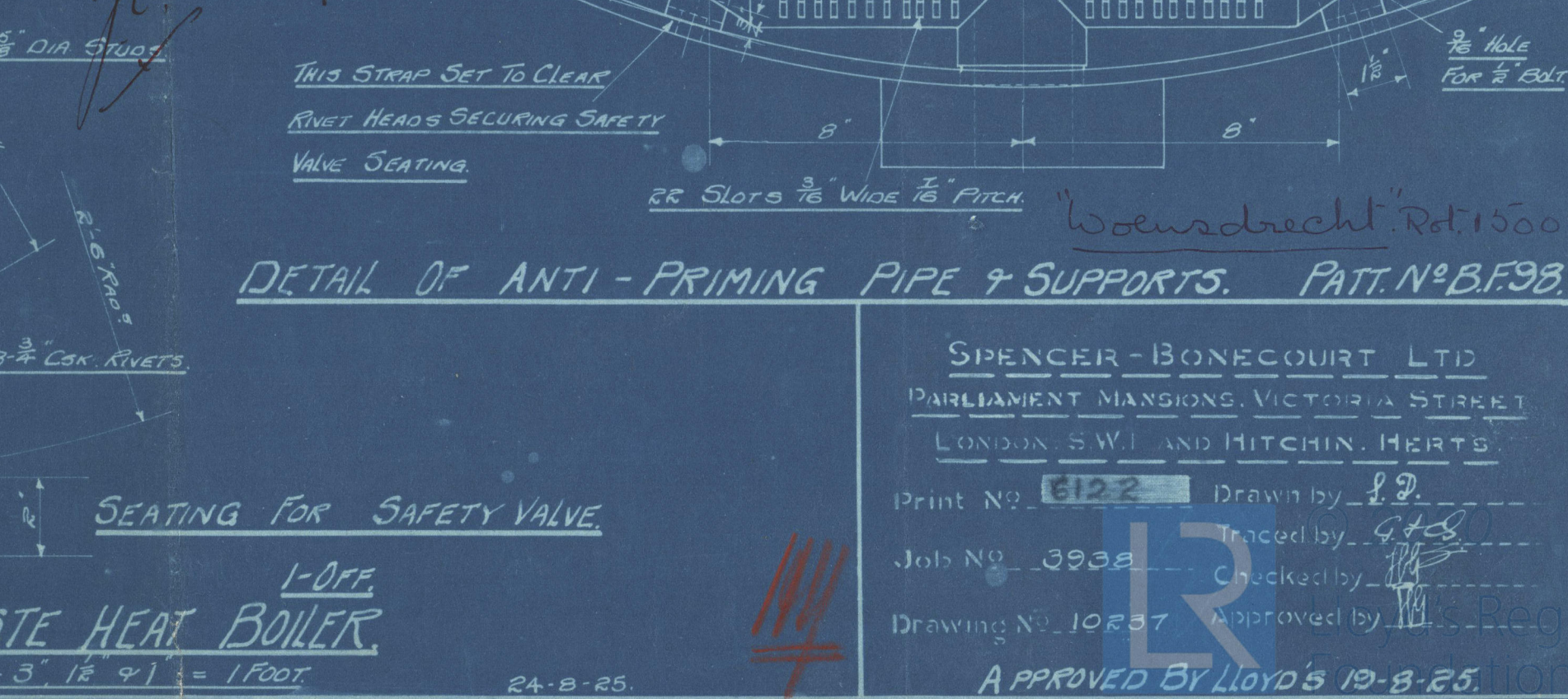
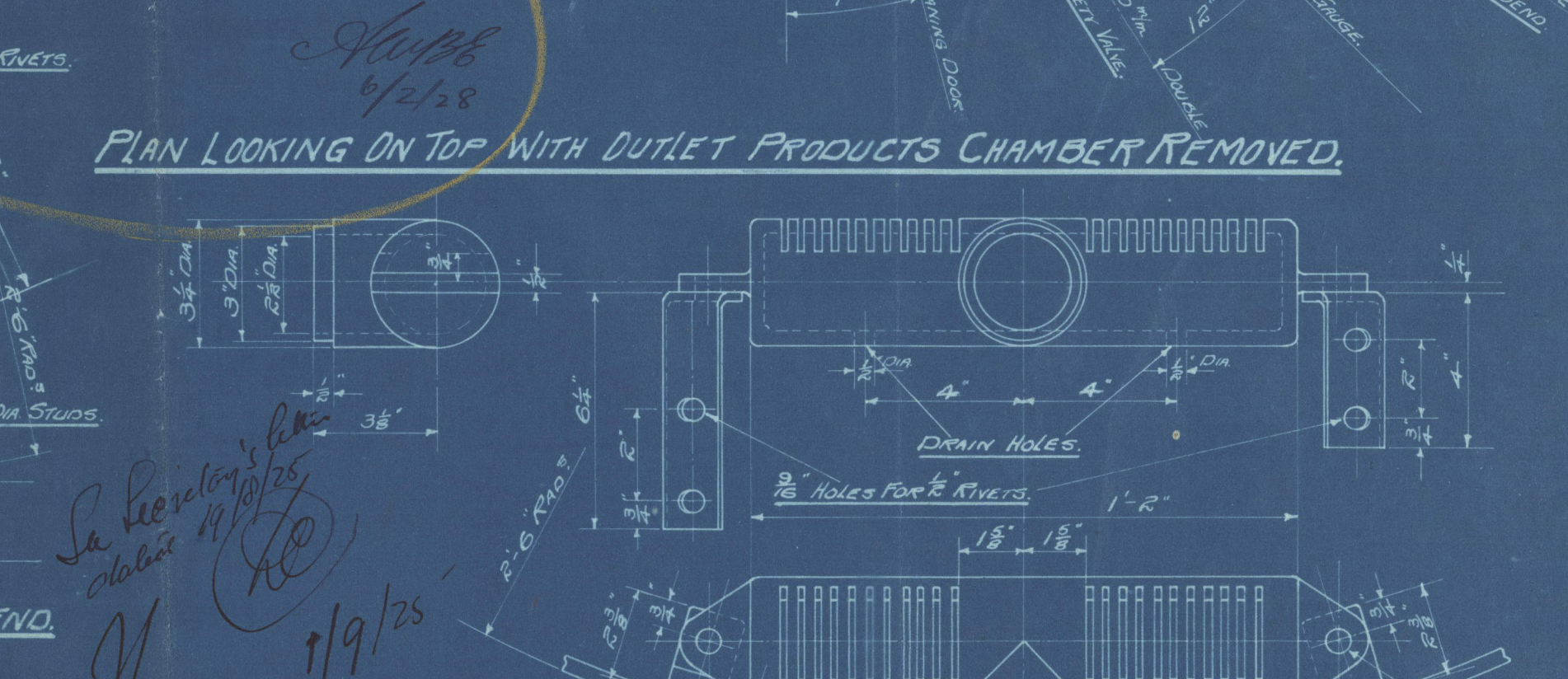
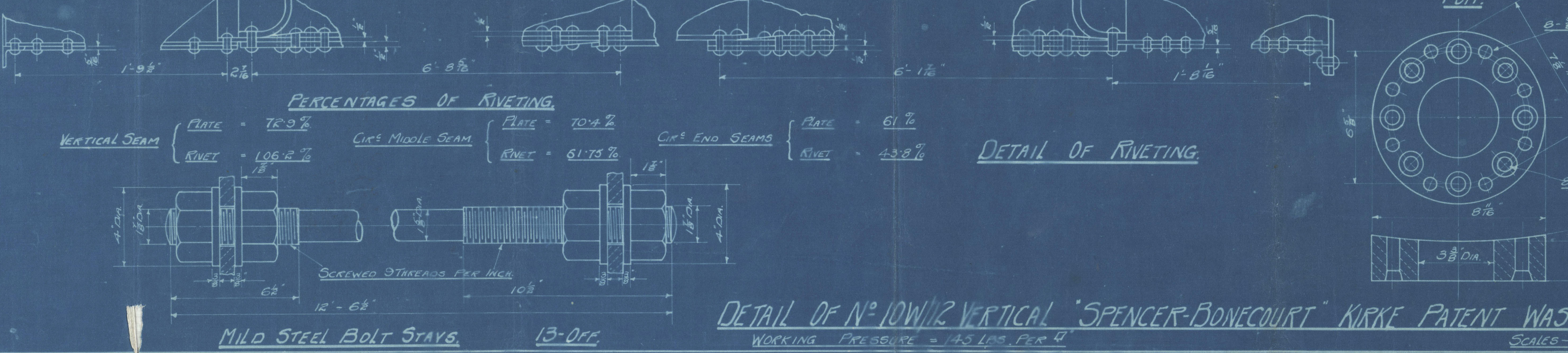
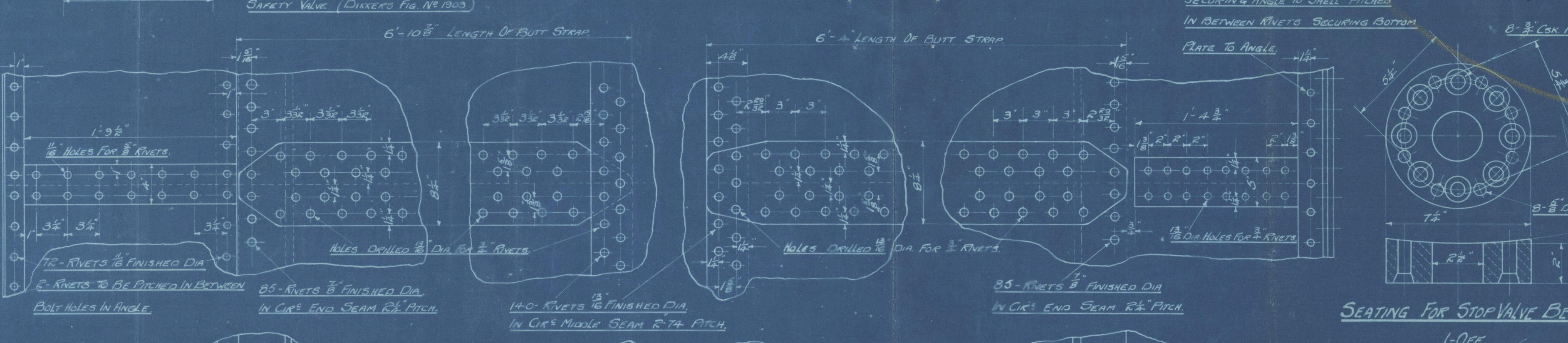
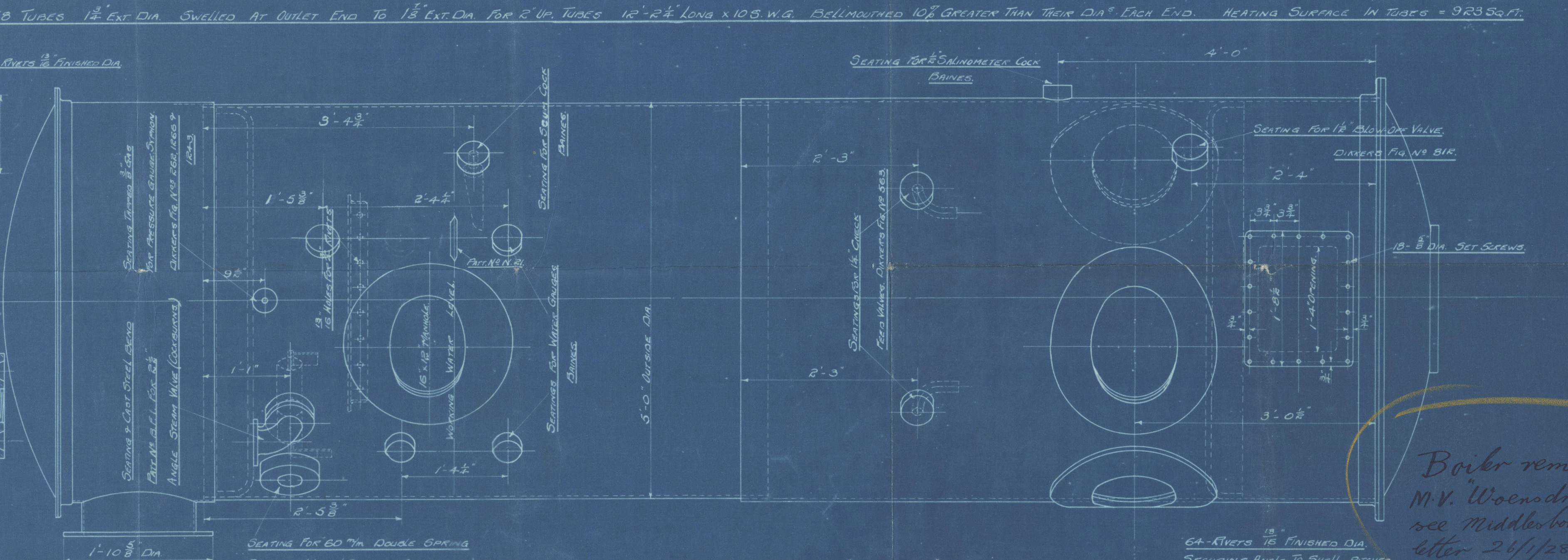
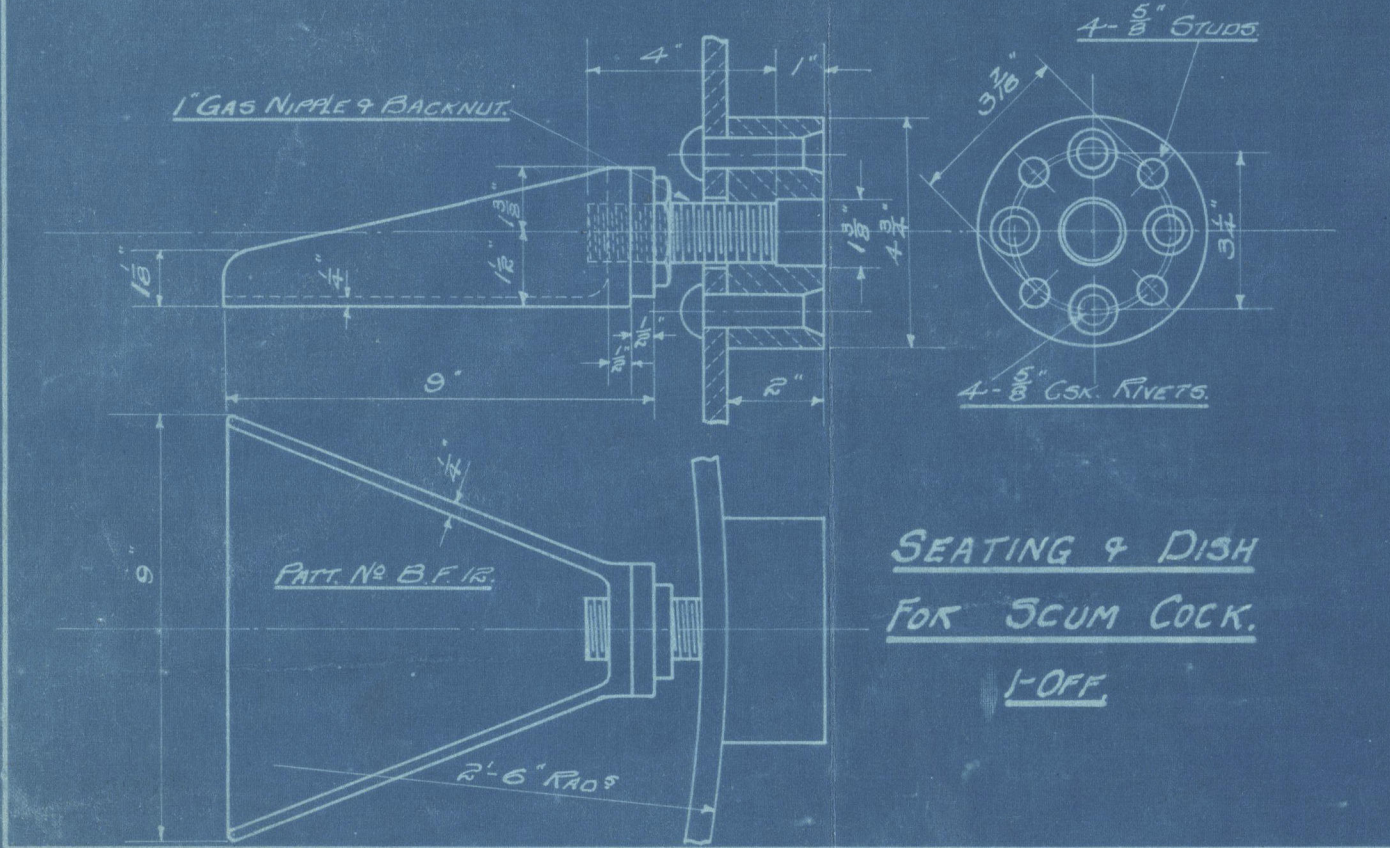
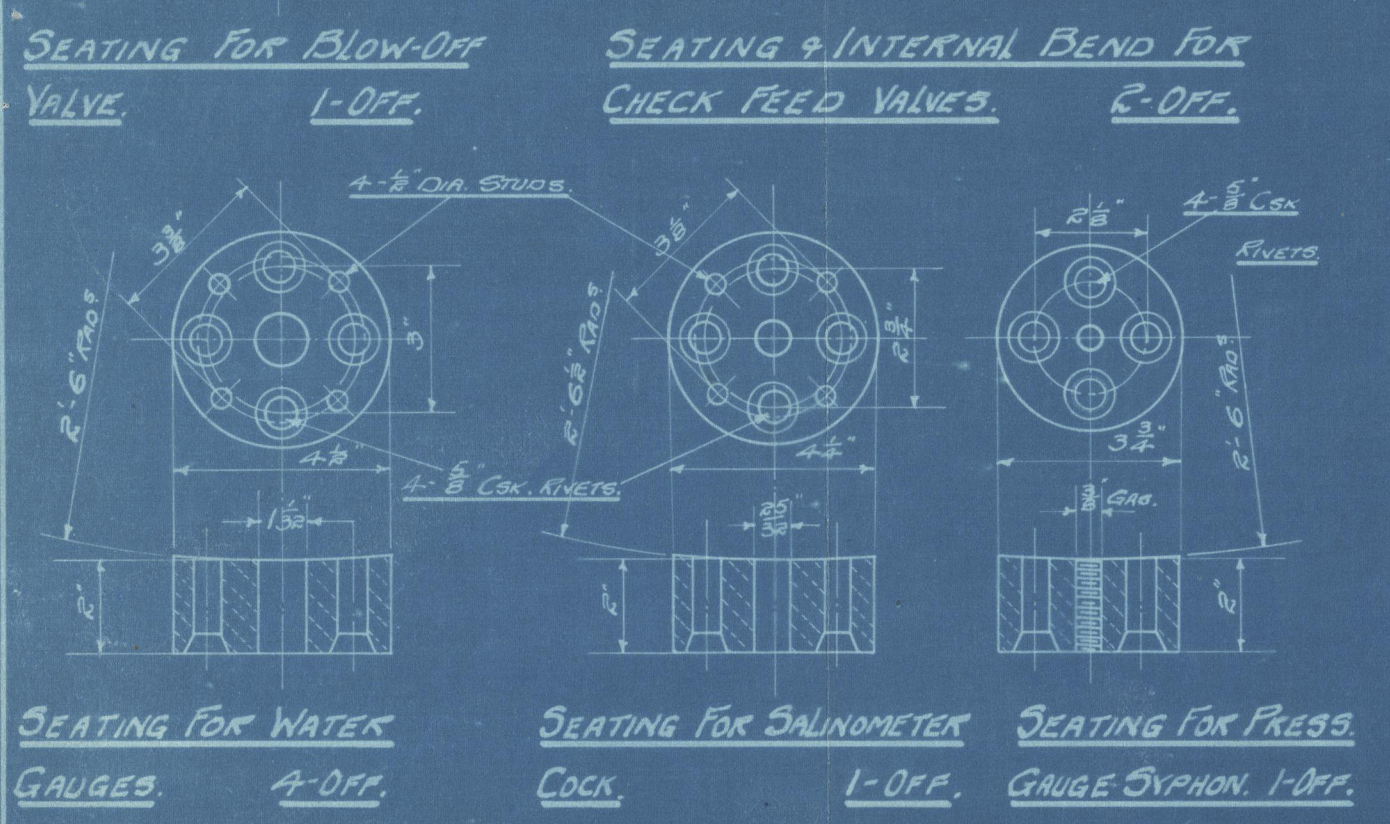
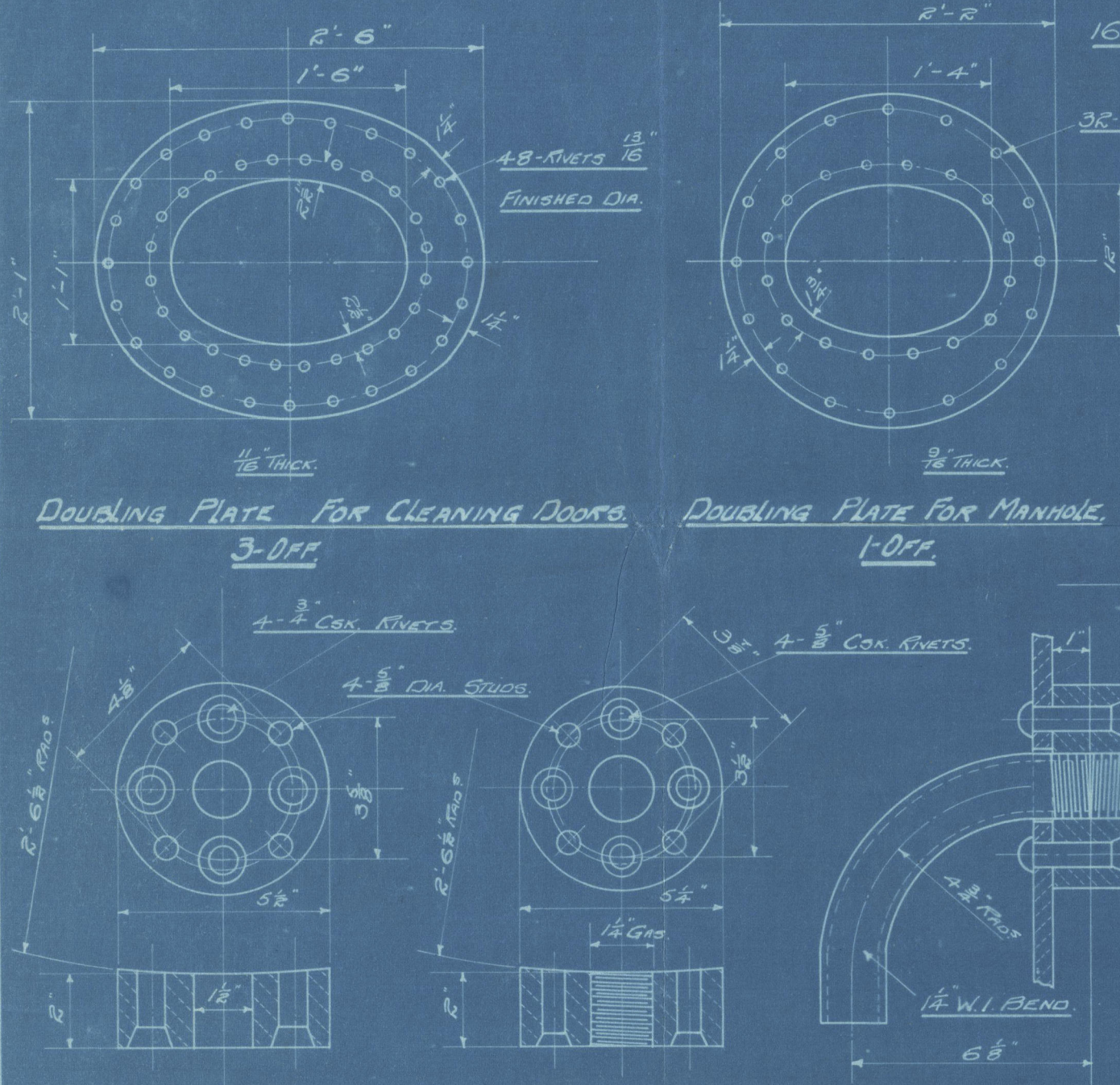


PLAN LOOKING ON TOP.



SECTION ON LINE 'AB'.



Boiler removed from  
M.V. Woensdrecht  
see Middleborough, Surrey  
letter 26/1/28

4/1/28  
1/9/28

PLAN LOOKING ON TOP WITH OUTLET PRODUCTS CHAMBER REMOVED.

DETAIL OF ANTI-PRIMING PIPE & SUPPORTS.

DETAIL OF N° 10W/12 VERTICAL 'SPENCER-BONECOURT' KIRKE PATENT WASTE HEAT BOILER  
WORKING PRESSURE = 14.5 LBS. PER SQ. IN.

SPENCER-BONECOURT LTD  
PARLIAMENT MANOR, VICTORIA STREET  
LONDON S.W.1 AND HITCHIN, HERTS.  
Print No. 6122 Drawn by J.P.  
Job No. 3938 Traced by J.P.  
Drawing No. 10687 Checked by J.P.  
APPROVED BY LLOYD'S 19-3-28



Enclosure to

Lloyds Register of Shipping.

From Messrs. Spencer-Bonecourt, Ltd.,  
HITCHIN, HERTS.

W1137-0189(112)

PLAN LOOKING ON TOP.



Boiler No. 3838 by Spencer. Bonecourt. La

London Report No. 89384.

Amended

to show new partition water gauge pad



© 2020

Lloyd's Register  
Foundation

W131-0189