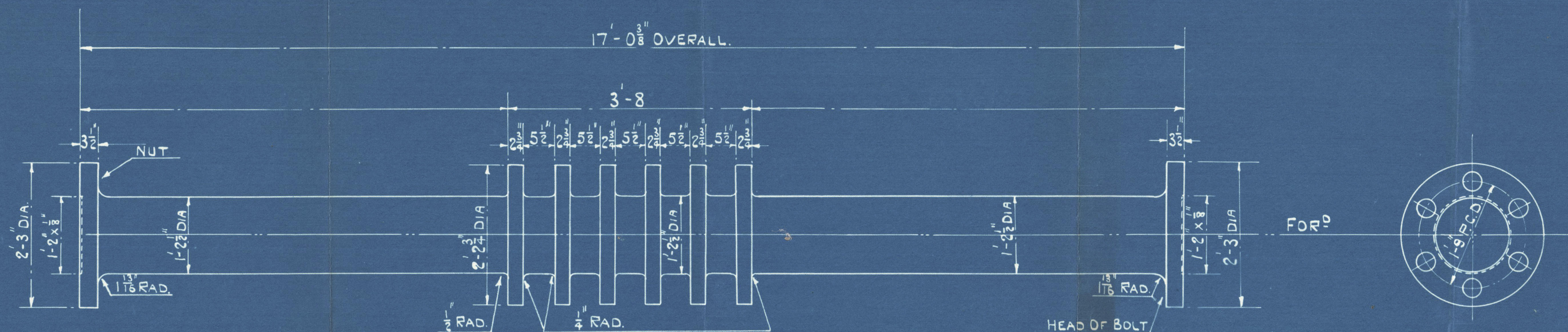
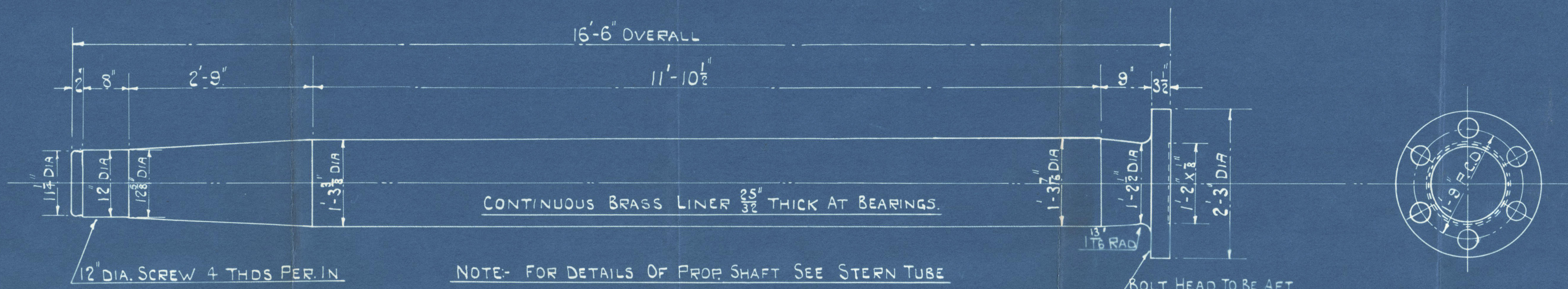


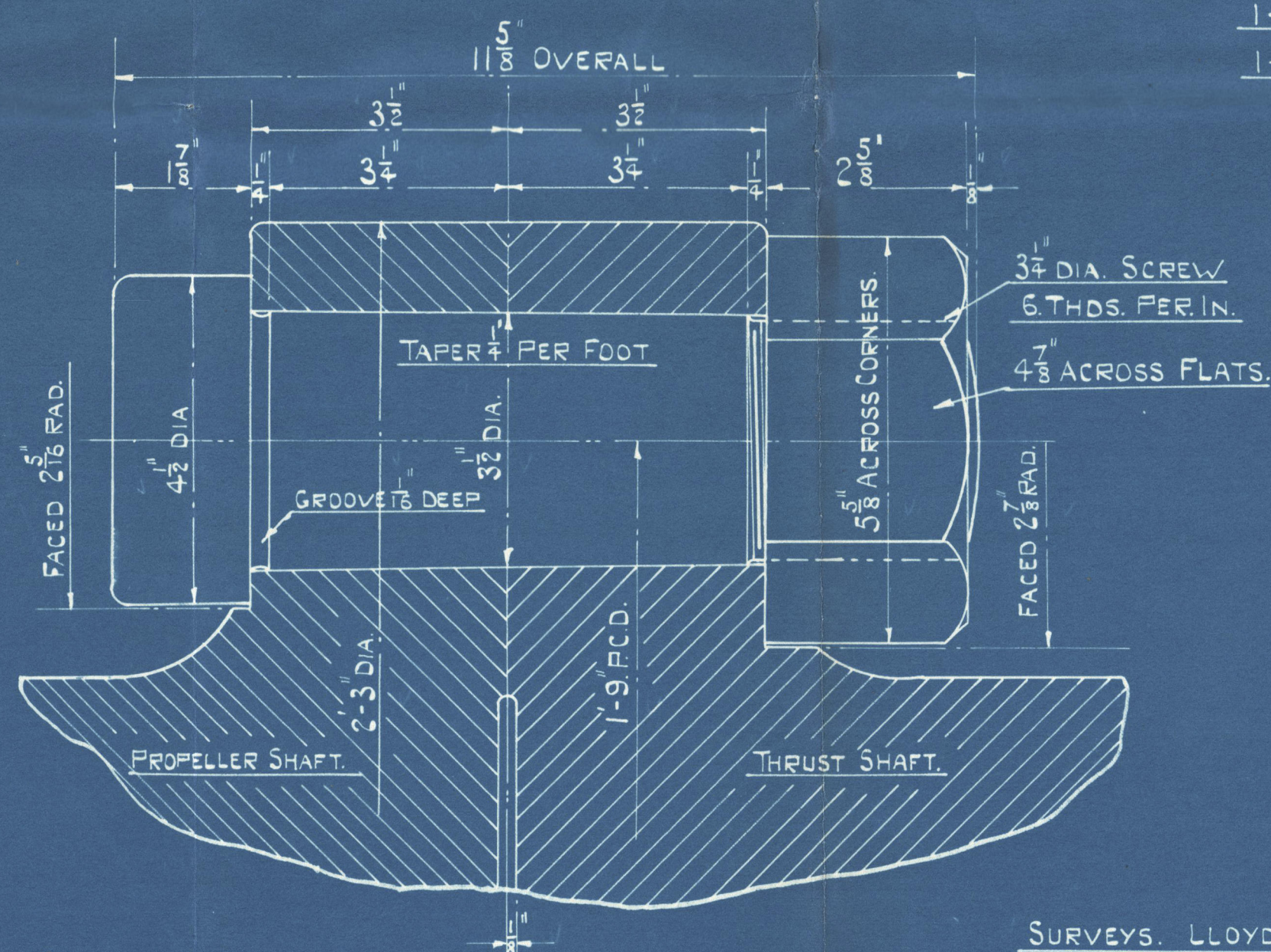
17.6.26



THRUST SHAFT
1-OFF.

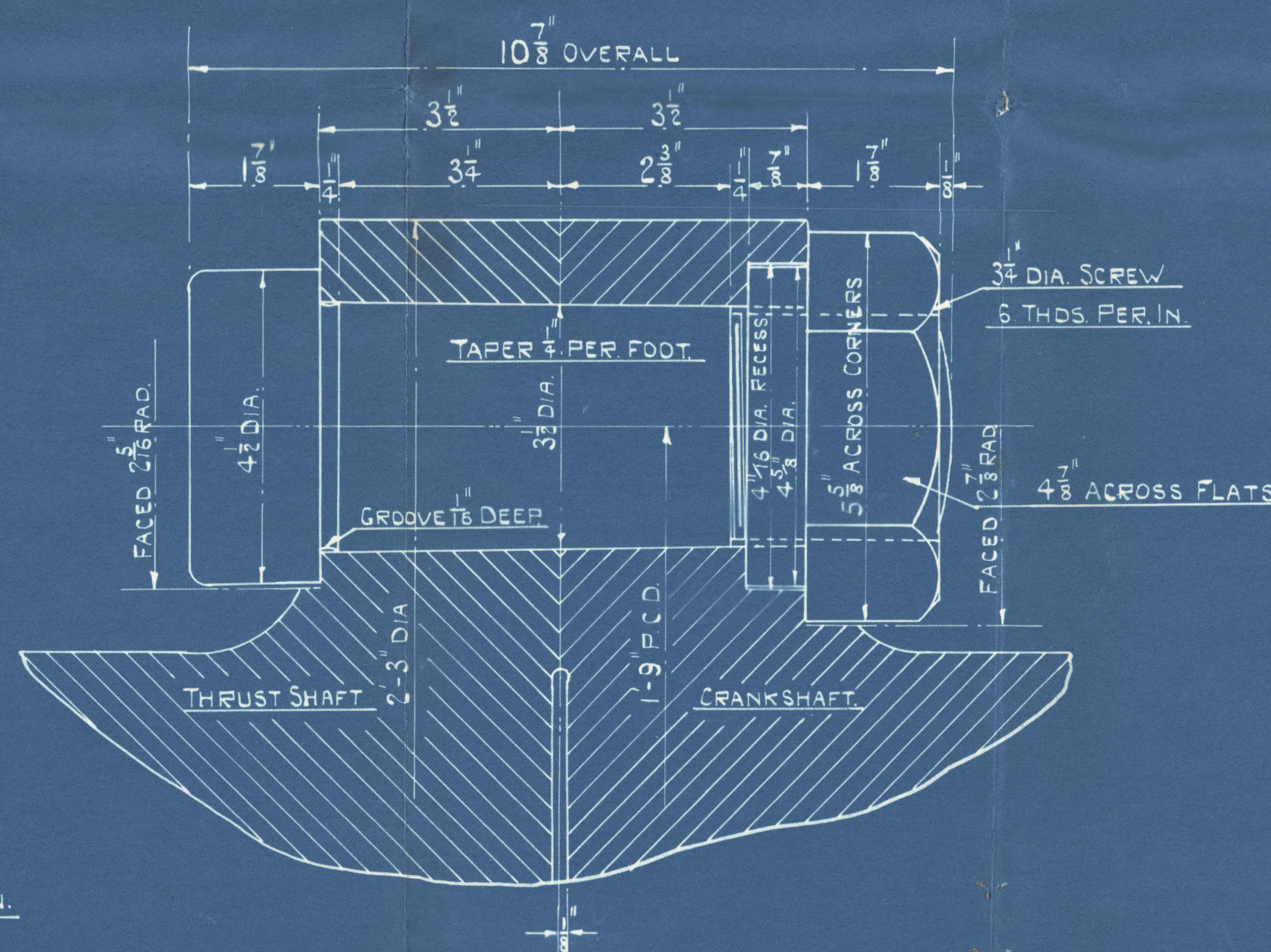


PROPELLER SHAFT.
1-OFF WORKING
1-OFF SPARE



COUPLING BOLTS FOR PROPELLER & THRUST SHAFTS.

6-OFF WORKING.
2-OFF SPARE.
SCALE- HALF SIZE.



COUPLING BOLTS FOR CRANK & THRUST SHAFTS.

6-OFF WORKING 2-OFF SPARE.
SCALE- HALF SIZE.

SHAFTING. ENGINE. NO. 633

SCALE- 3/4" = 1 FOOT.

10TH JUNE. 1926.

Eng- 25'-4 3/4"-4 1/4" = 210 1/2"
Thrust Rule = 14.028
Propeller " = 14.86"
Dia of Propeller = 18'-0"

JOHN G. KINCAID & Co. LTD.
(DRAWING OFFICE)
12 JUN. 1926
ENGINEERS & BOILERMAKERS.
GREENOCK.

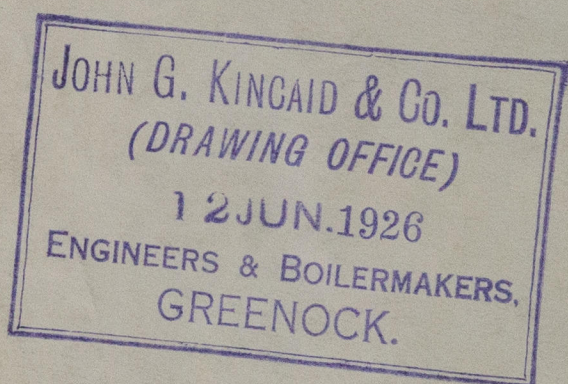
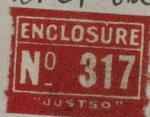
DRC. NO. 4151

W137-0018

John Kincaid & Co.
Propeller & Wheel Works
Eng No 633/9
Greenock Dockyard, G.S.W.

S. S. "Virginia"

Greenock List Entry Report N° 18778.



XI/37-0018



© 2020

Lloyd's Register
Foundation