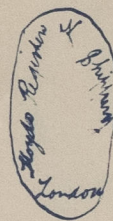


EAST LONDON HARBOUR 2000 TONS SUCTION DREDGER. REQUISITION 304.



Lloyd's Stamp

STEEL TWIN SCREW.

SAND PUMP HOPPER DREDGER N° 401. as built

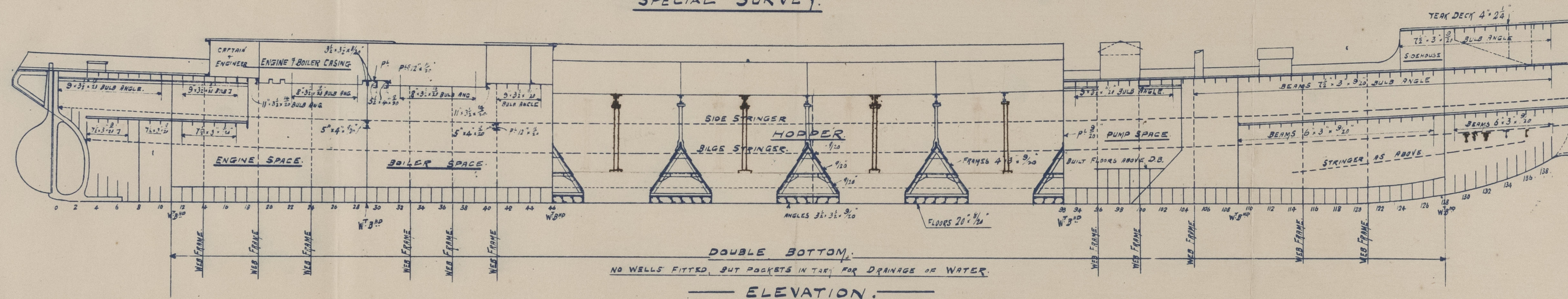
SCALE $\frac{1}{16}$ " = ONE FOOT.

TO BE CLASSED AT LLOYD'S TO CLASS A.1. STEEL HOPPER DREDGER.

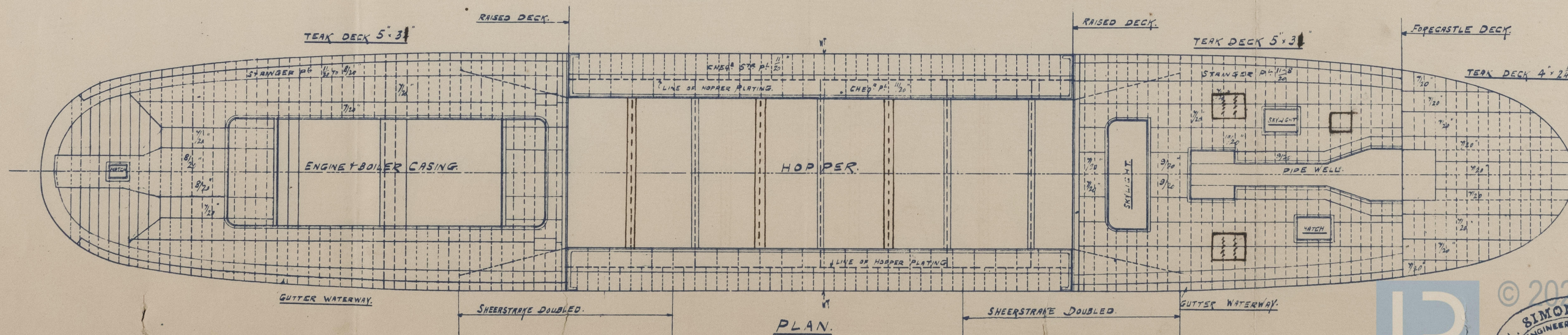
SPECIAL SURVEY.

DIMENSIONS.

LENGTH [AS PER RULE]	278'-4"
DEPTH " " "	19'-8"
BREADTH MOULDED.	44'-0"



KEELSON & STRINGERS SCARPHED TO SURVEYORS SATISFACTION.
AT ENDS OF HOPPER.



© 2021



W1367-0187

Messrs W. Simons & Co
Sand Pump Hopper Sucker

No 401

Profile & Deck Plan
as built.

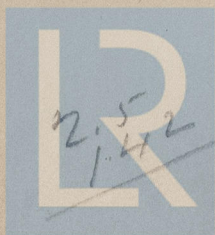
s.s. Agnes

Pls apt No 20914



RETAIN

RETAIN



© 2021

Lloyd's Register
Foundation

W1367-0187