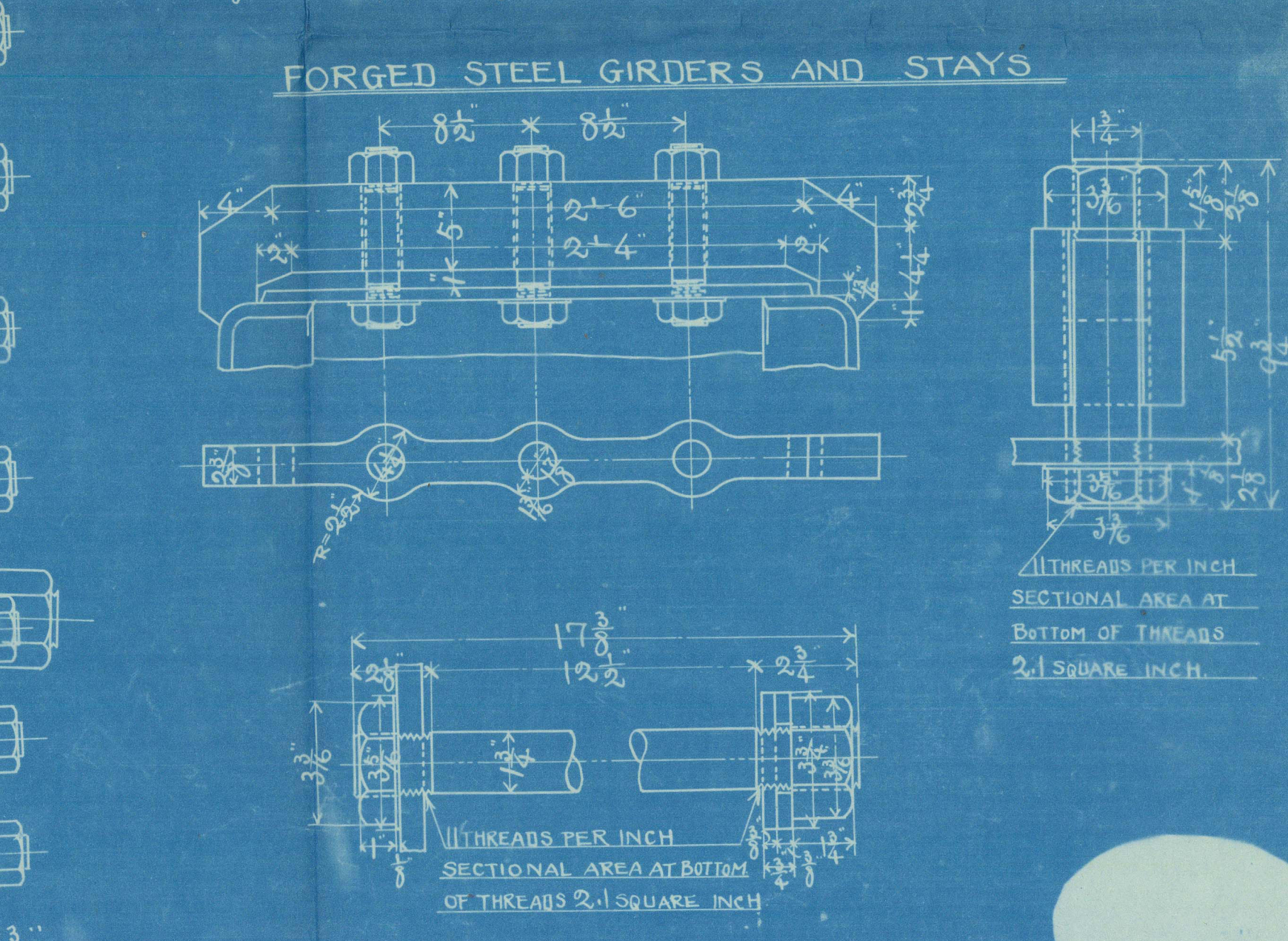
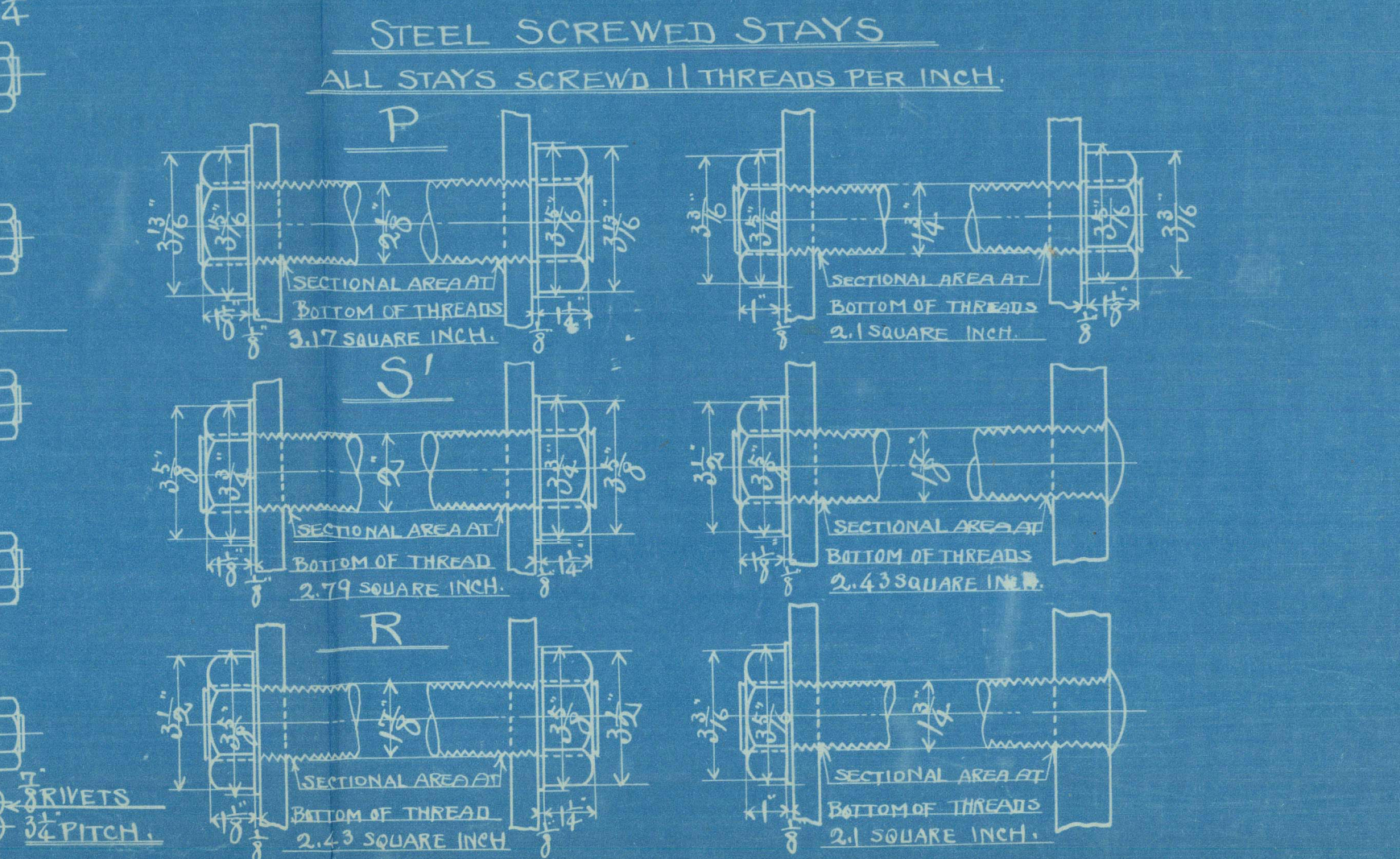
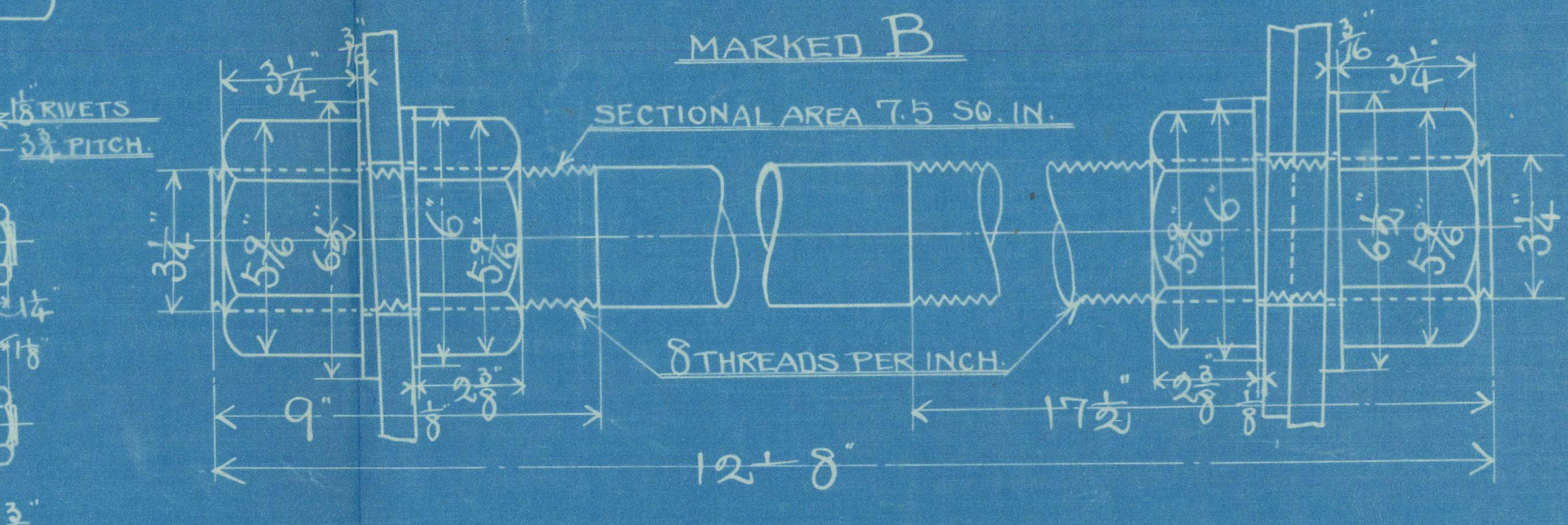
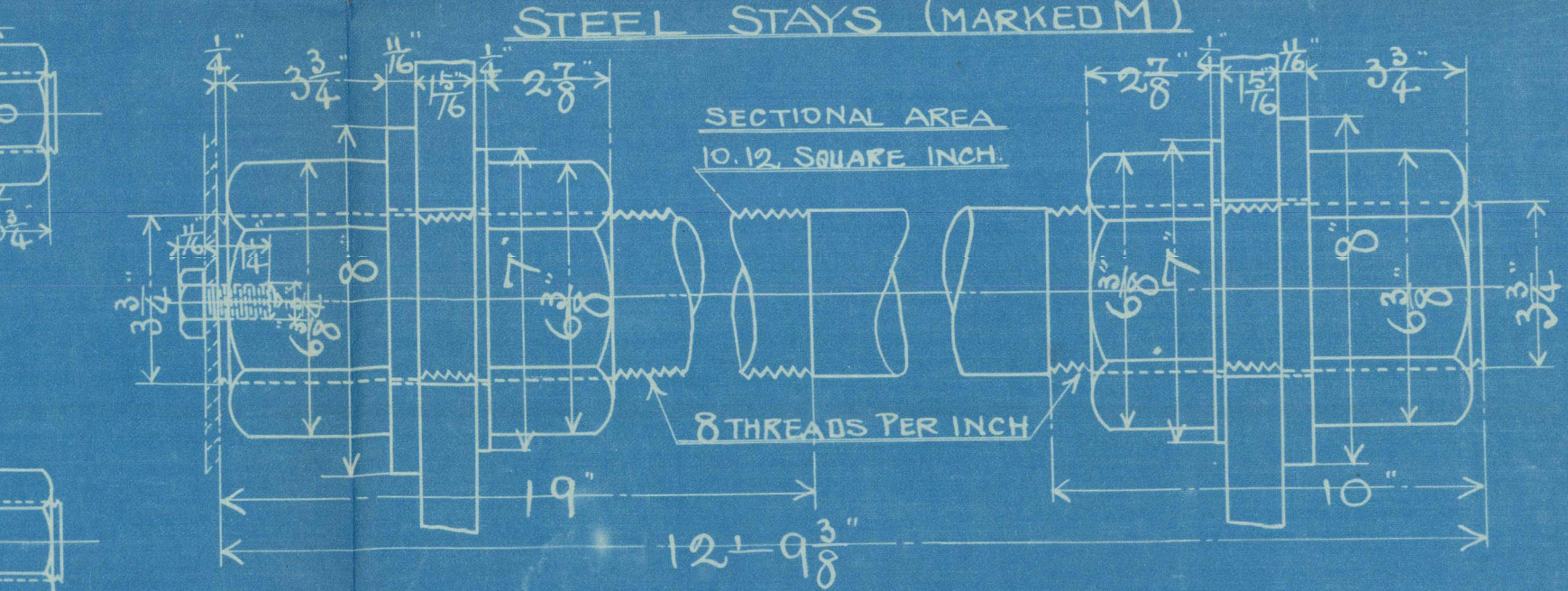
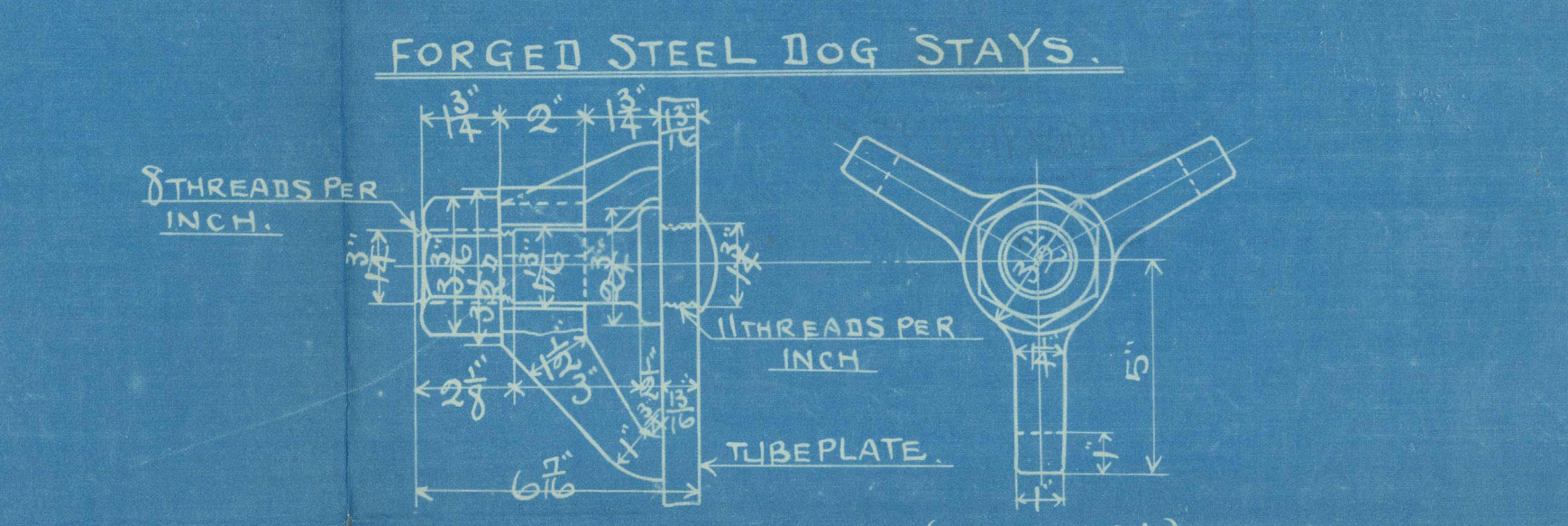
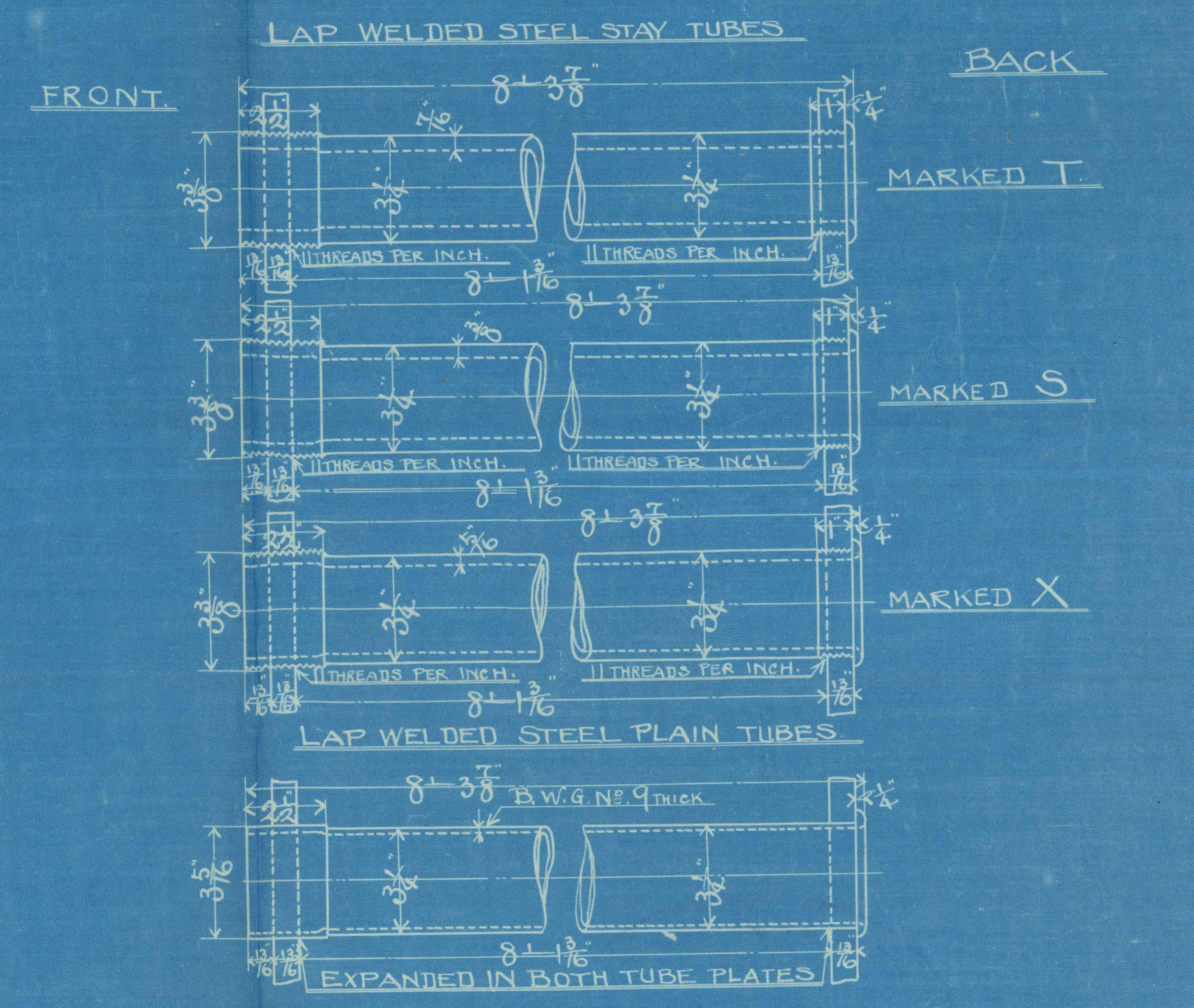
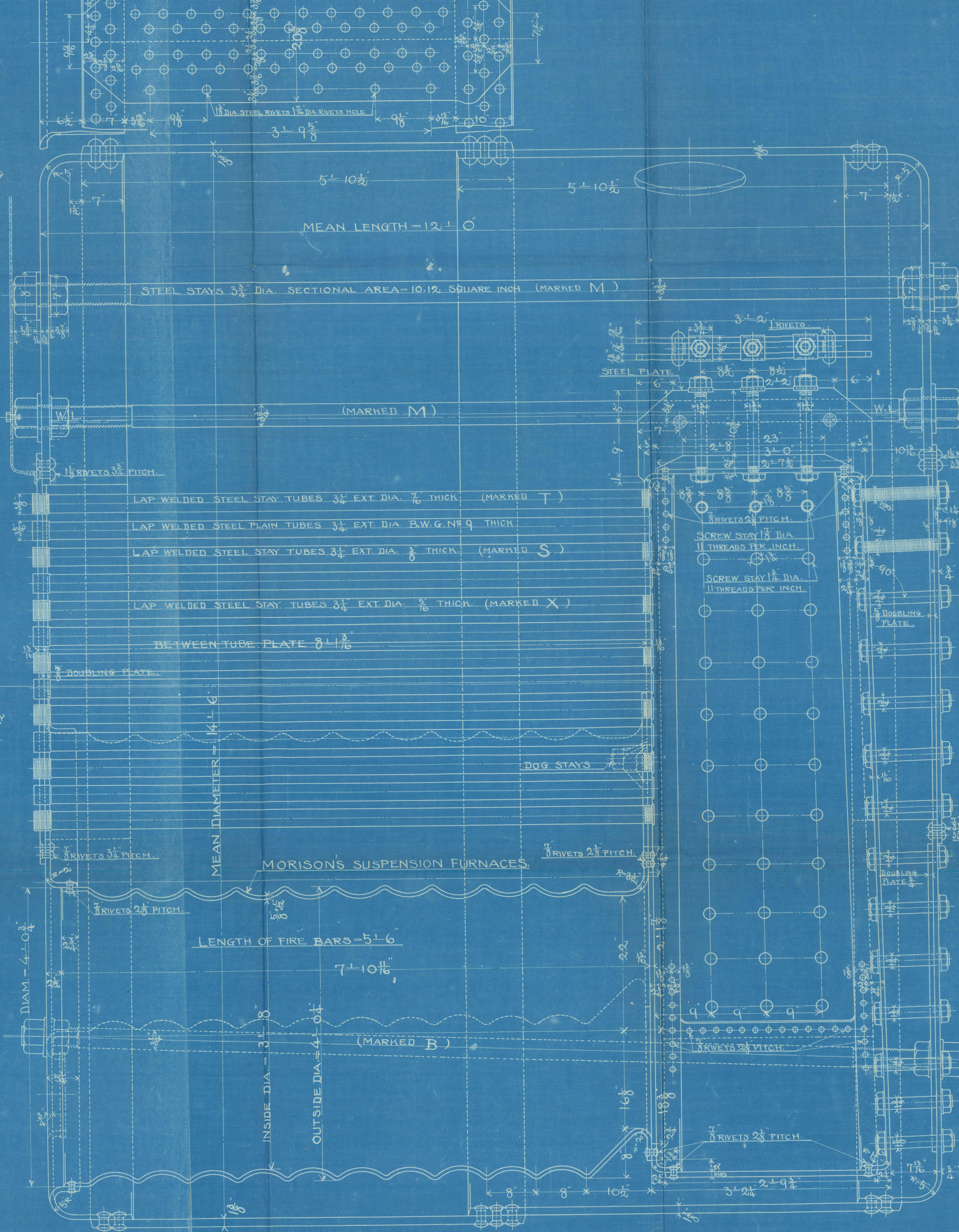
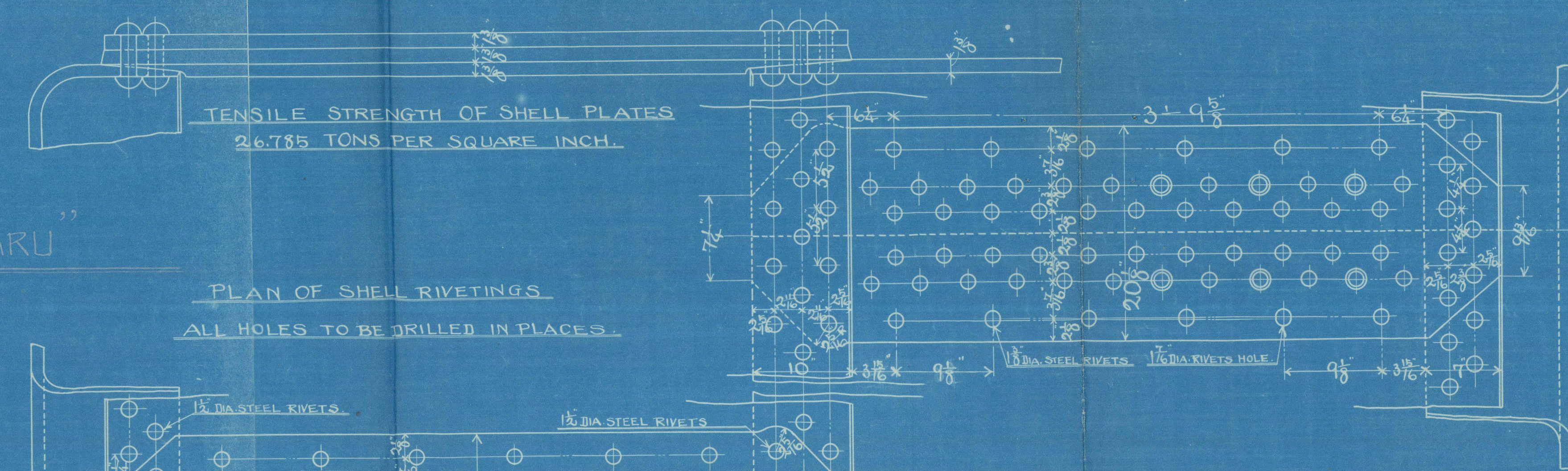
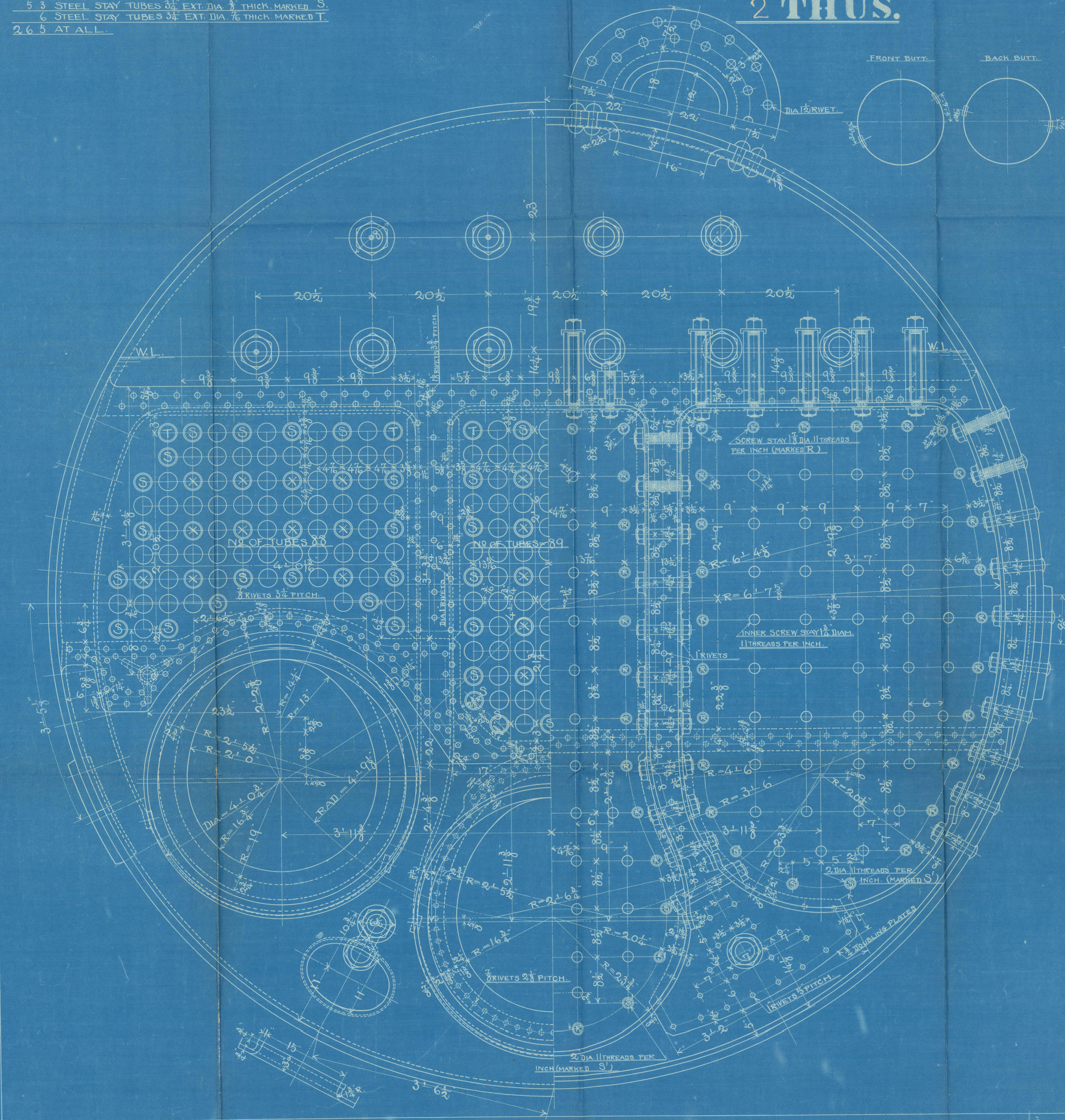


No 2

STEEL BOILERS FOR BUILDERS No 429. "TOFUKU-MARU"

DIA. 14'-6" x 12'-0" LONG.
WORKING PRESSURE: 200 LBS.
SCALE: 1 1/2 IN. TO 1 FT.
2 THUS.

HEATING SURFACES.	1826.039	Sq. FT.
TUBES.	101.053	"
PIPE RIVES.	218.474	"
BACK TUBE PLATES.	46.666	"
TOTAL.	2252.232	"
GRATE AREA.	60.500	"
RATIO OF H/G	37.227	
SECTIONAL AREA OF TUBES.	11.495	
SEC. AREA OF TUBES.	1	
GRATE AREA.	5.263	
TUBES		
1 7/8" STEEL PLAIN TUBES 3/4" EXT. DIA. NO. 9 B.W.G. THICK.		
3 2" STEEL STAY TUBES 3/4" EXT. DIA. 7/8" THICK MARKED X.		
5 3" STEEL STAY TUBES 1/2" EXT. DIA. 1/2" THICK MARKED S.		
6 STEEL STAY TUBES 3/4" EXT. DIA. 7/8" THICK MARKED T.		
2 6 5 AT ALL.		



KAWASAKI DOCKYARD Co., LTD.

Builders No.	4 2 9.
" Tofuku maru "	
Main	boiler
(large type)	
Drawing No.	

Kobe Rpt No 2414



RETAIN



© 2020

Lloyd's Register
Foundation

W1359-0113