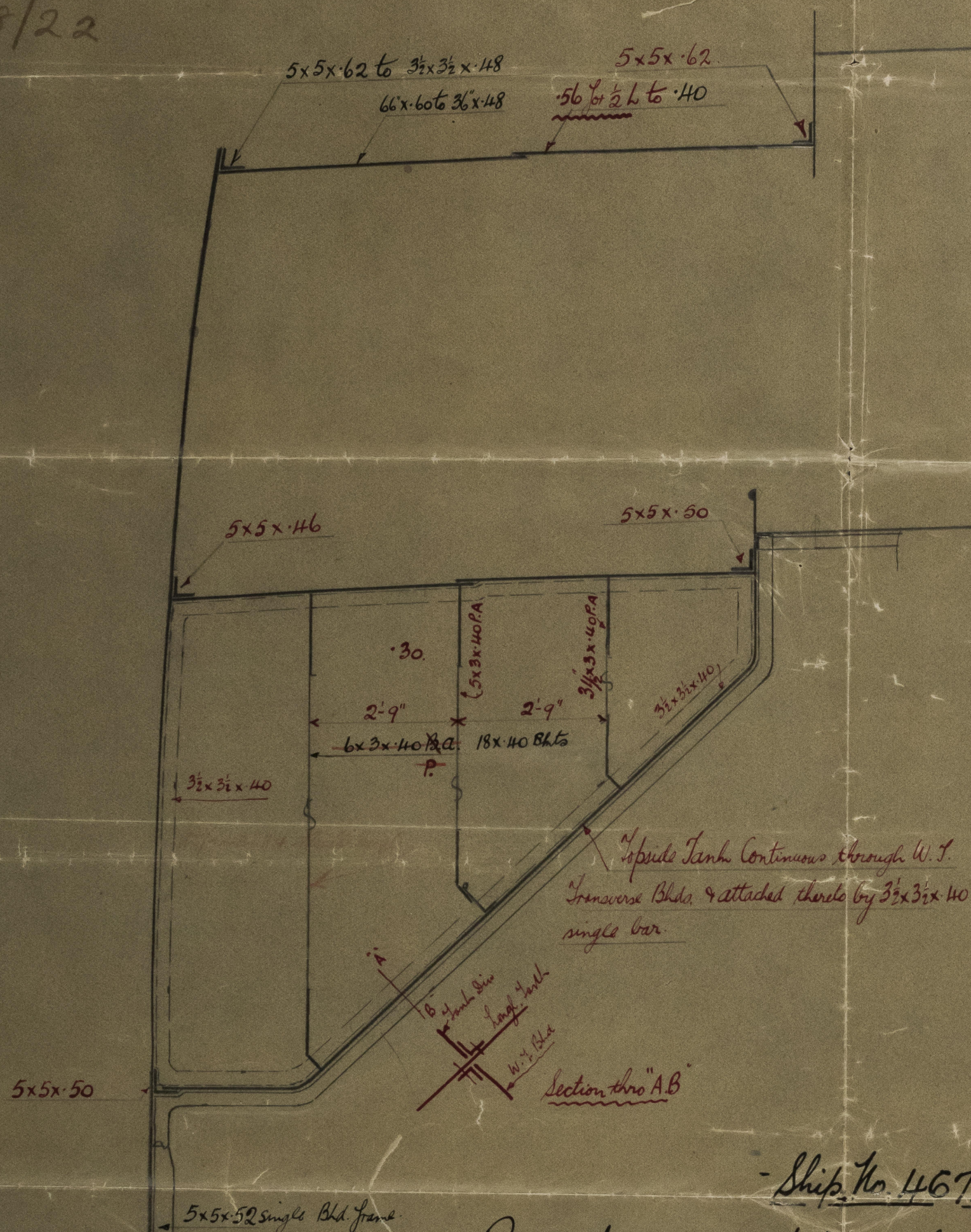


25/8/22

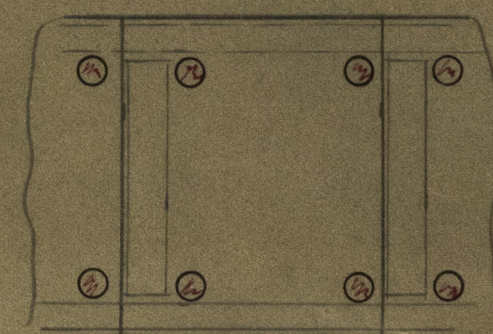


- Ship No. 467 -

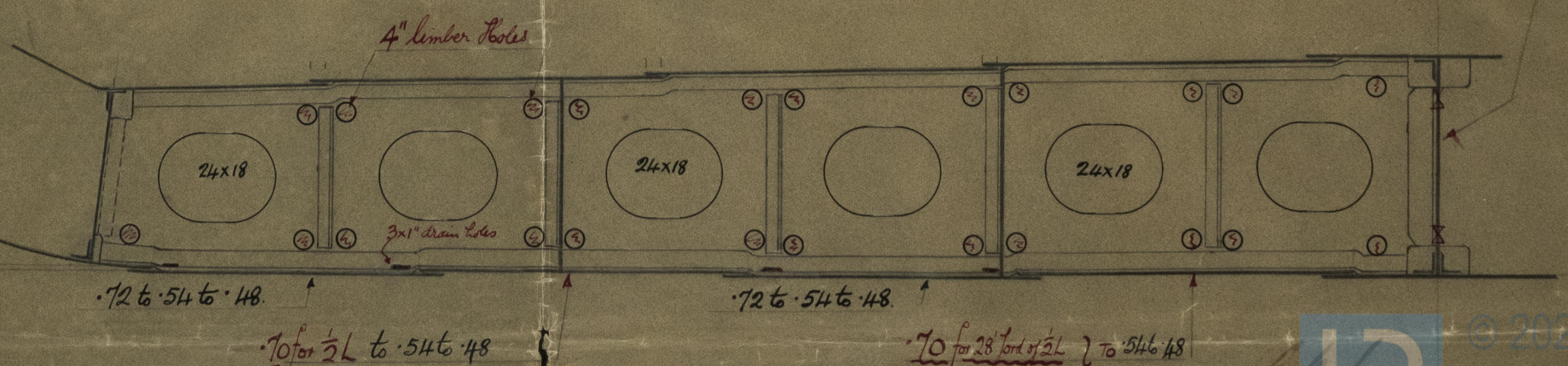
Proposed Modifications to Midships Section Approved by Lloyds 17/8/22.

Scale 1/2" = one foot.

- Modifications shown in red ink. -



Section thro G. Girder showing 4" dia. Limber holes



Standard Yard Limber hole punches - 2 1/2 diam
to 20 1/2 diam - 6" dia



© 2021
Lloyd's Register
Foundation

Horkman Clark & Co.

N^o 467

Modifications to
Midship Section

appnd 25/8/22.

1/2 Berwickmoor

Del 8964

W1357-0152

Lloyd's Register
Foundation