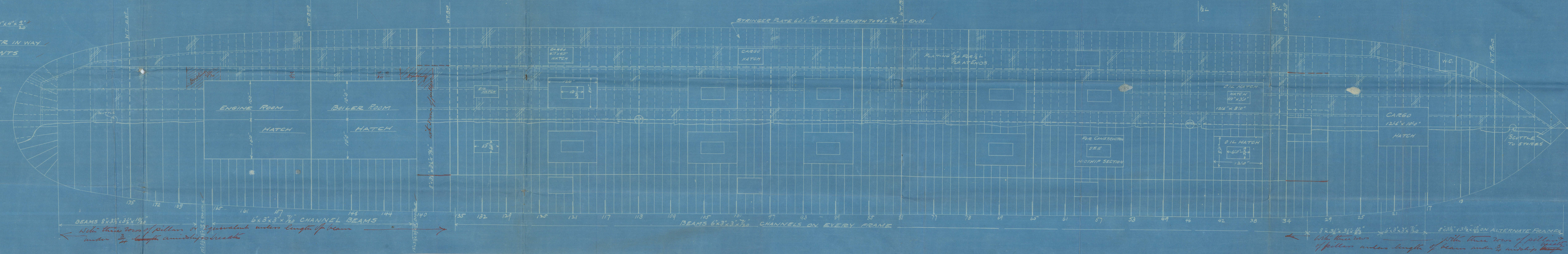
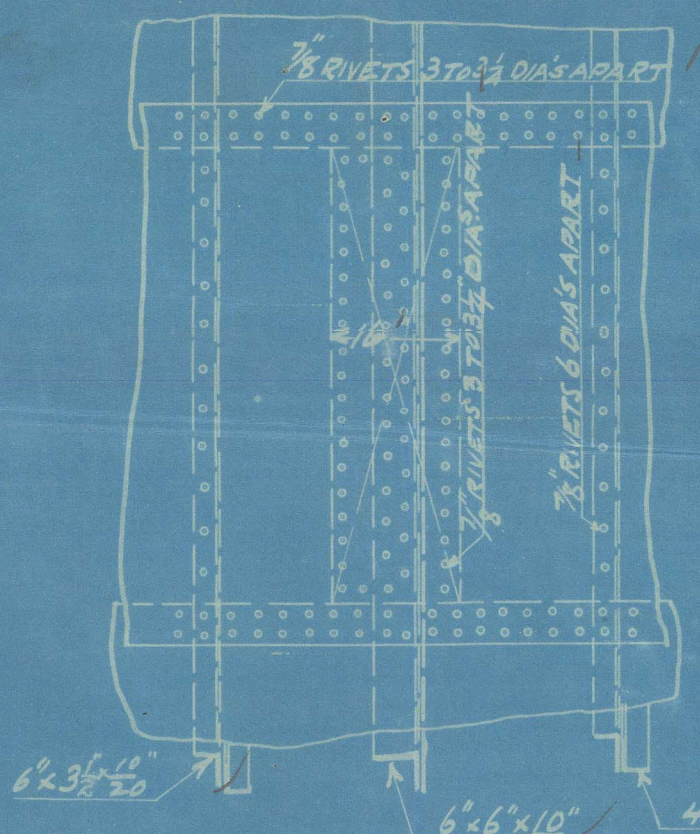
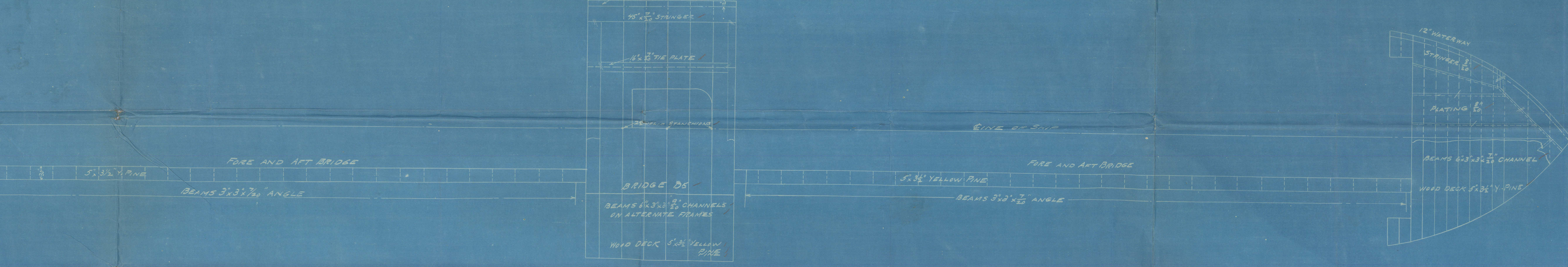
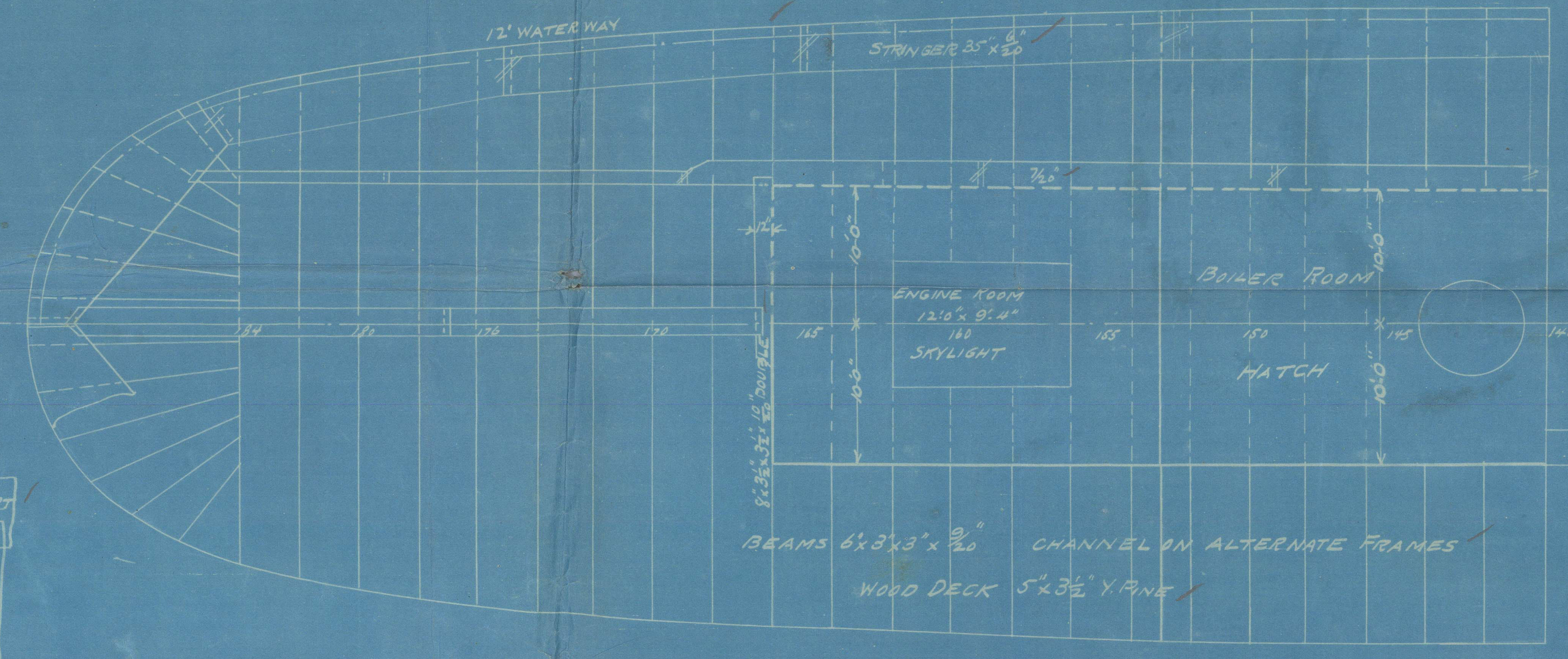
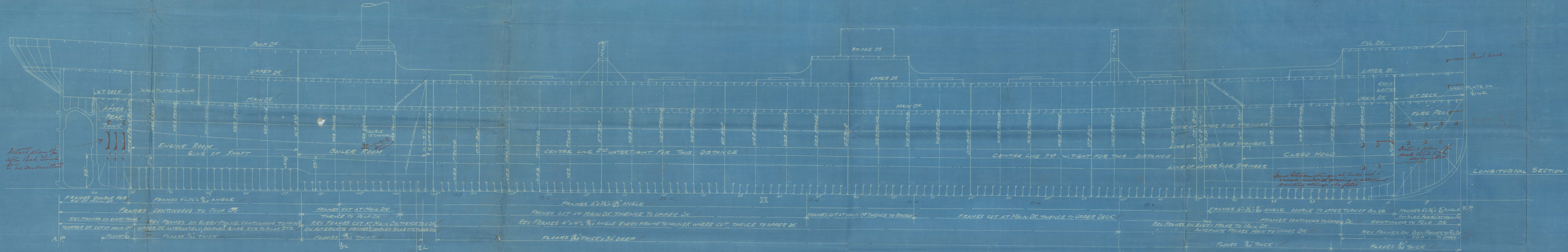


ALTERATIONS	Date	Approved



THE NEWPORT NEWS SHIPBUILDING & DRY DOCK CO.  
NEWPORT NEWS, VA.  
HULL DEPARTMENT,  
MERCHANT DIVISION.

LONGITUDINAL SECTION  
AND  
DECK PLANS  
HULL NO. 44

SCALE 1/8" = 1'-0" (SEE DETAIL 6-10-1902)  
DRAWN BY W.B. BAKER  
CHECKED BY W.B. BAKER  
APPROVED BY W.B. BAKER  
DATE 6-10-1902  
DRAWING NO. 21223





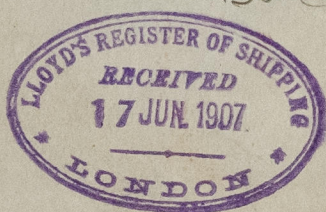
H. H. S.B. Co.

No. 44

1906  
Longitudinal Plan.

POOP BRIDGE & FCS<sup>LE</sup>  
UPPER DECKS

Upper 8<sup>th</sup> Deck  
Bal 1209.



'FRISCO' <sup>4</sup>  
EX  
W. S. PORTER

D 209.

SEC 1.

W1351-0190

© 2021

Lloyd's Register  
Foundation