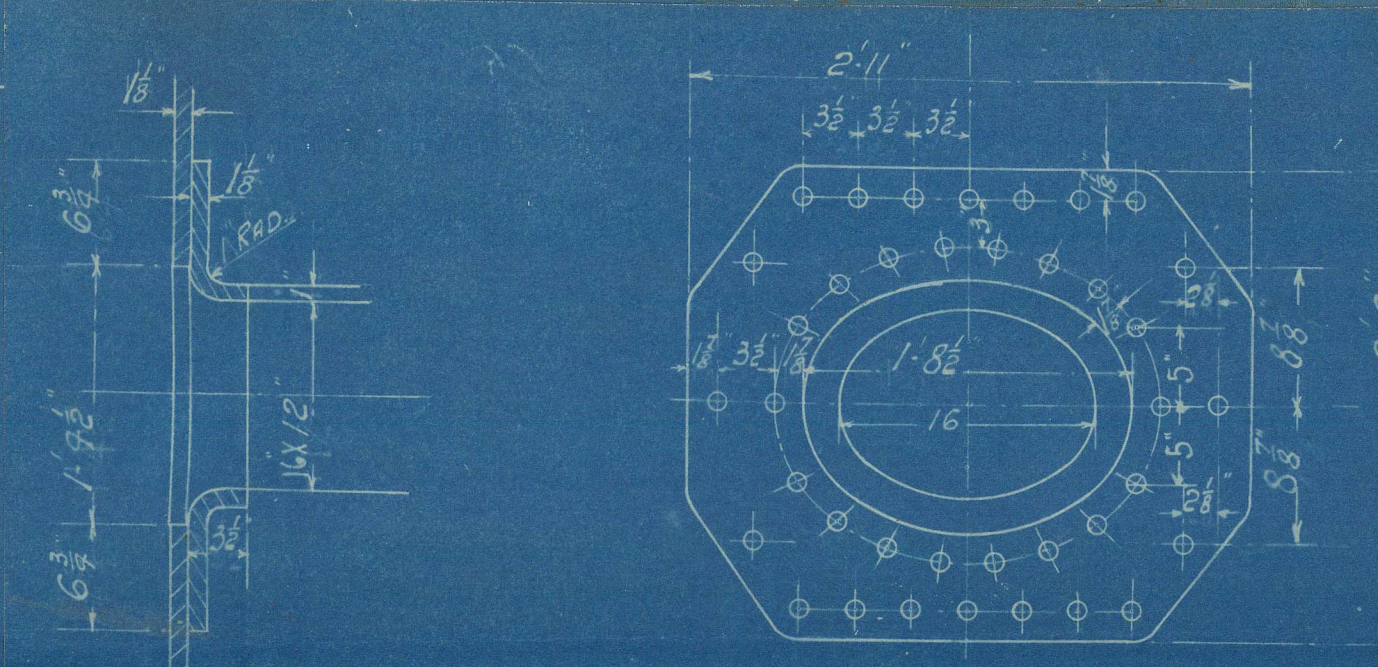
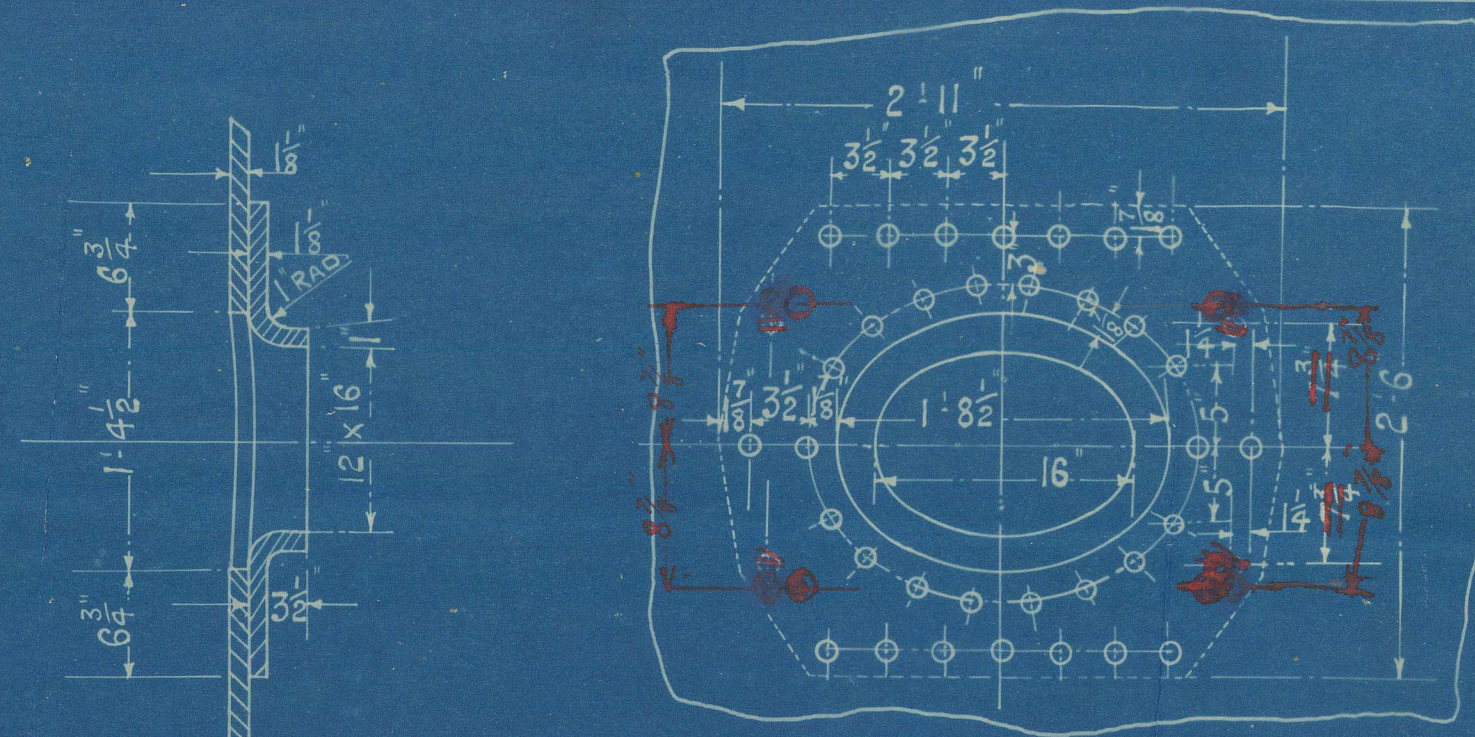
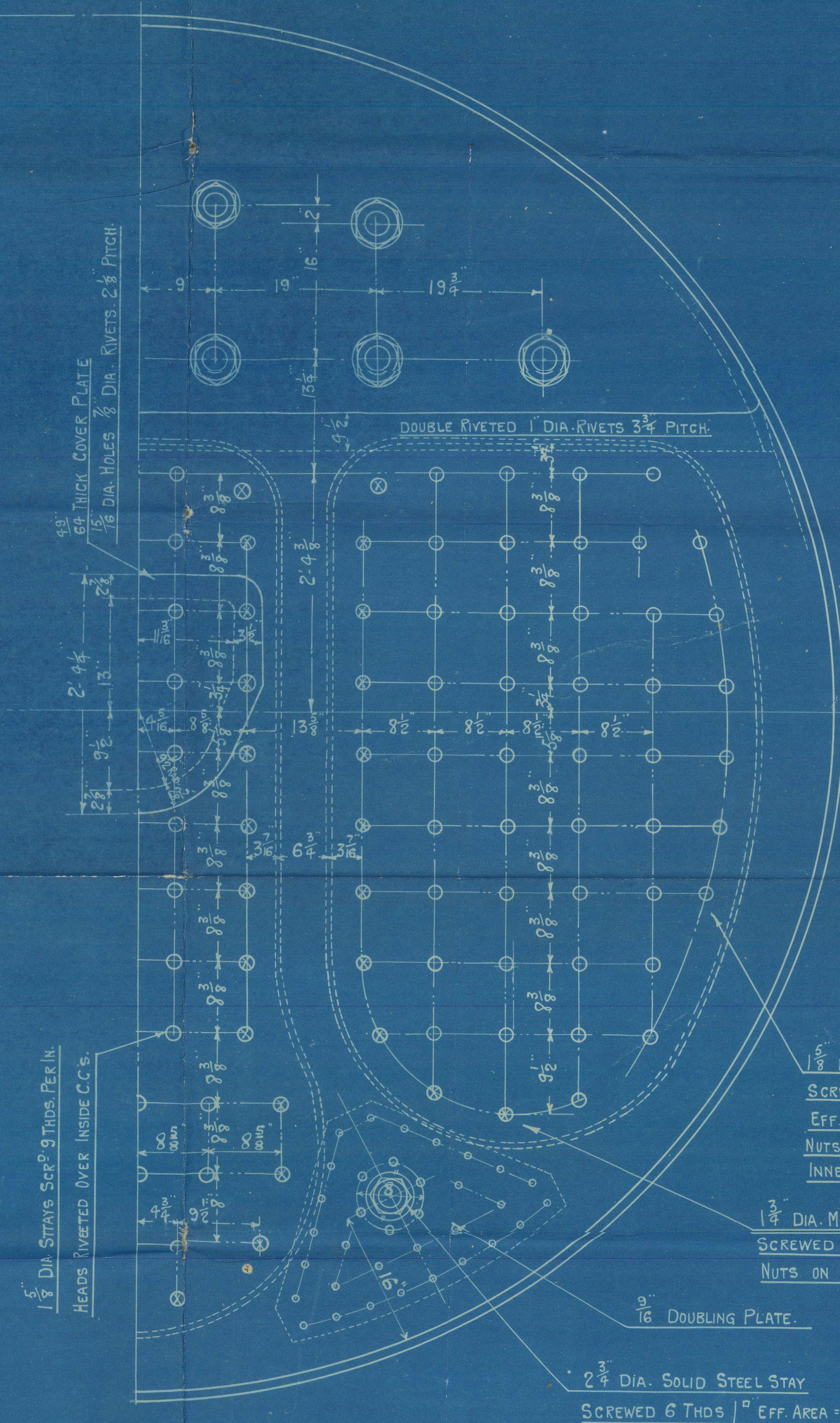
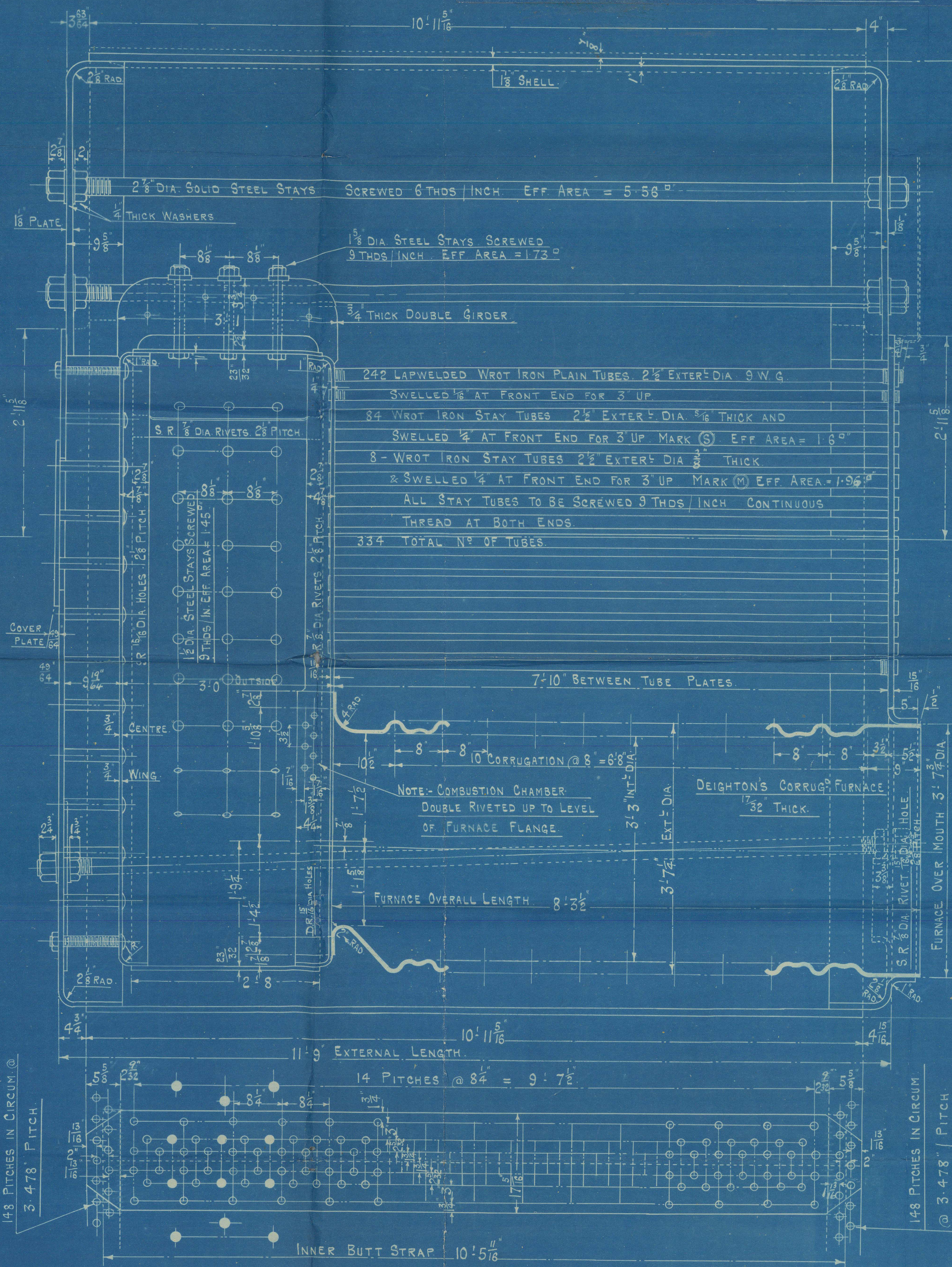
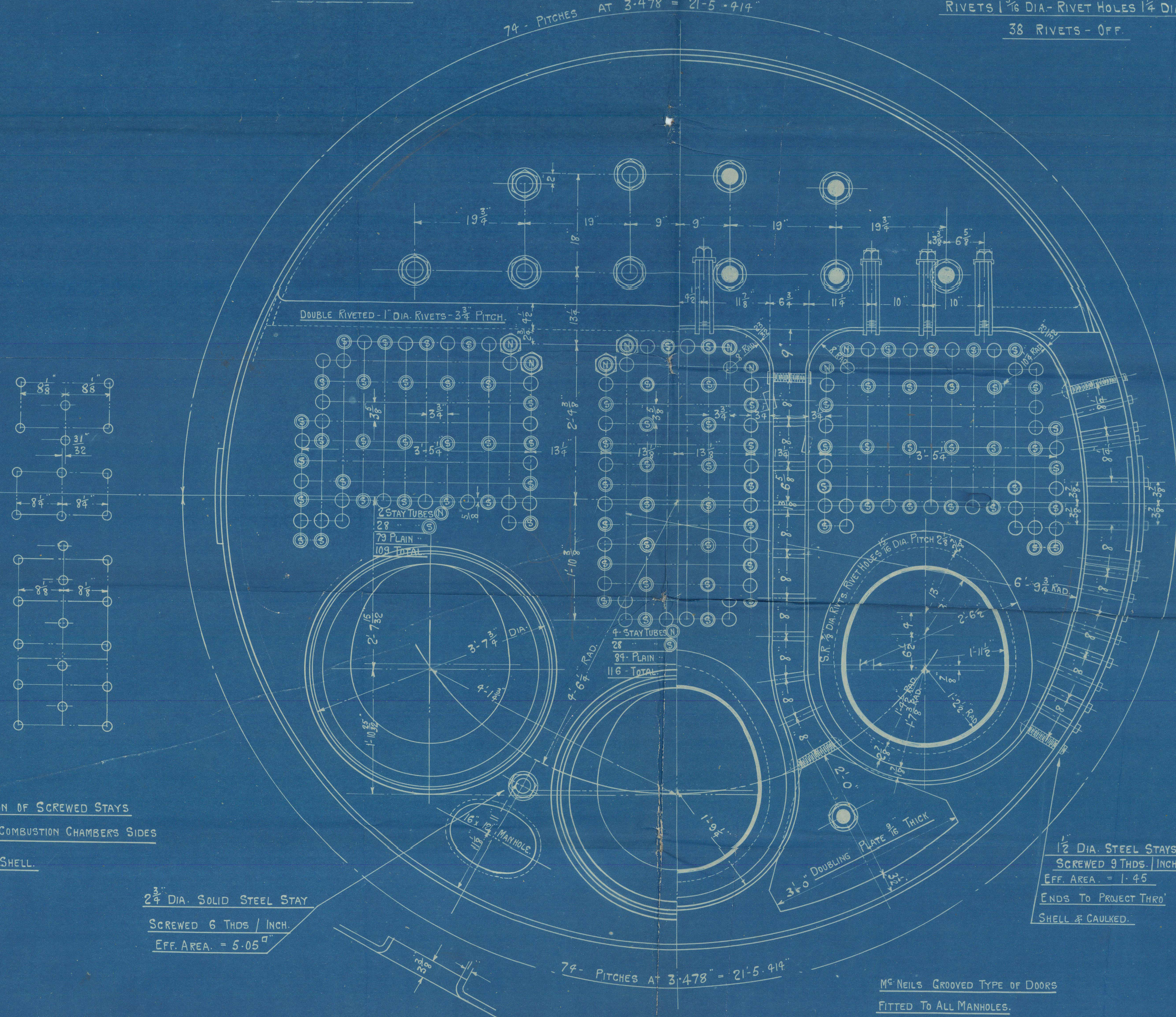


28221

JOHN G. KINCAID & CO.  
LIMITED  
ENGINEERS  
GREENOCK.



MANHOLE COMPENSATION RING.  
RIVETS 1 3/16 DIA - RIVET HOLES 1 1/2 DIA  
38 RIVETS - OFF



NOTE:-  
ALL PLATES, STAYS & RIVETS OF SIEMENS-MARTIN MILD STEEL UNLESS  
OTHERWISE SPECIFIED.  
LONGT. SEAMS - DOUBLE BUTT STRAP TREBLE RIVETED.  
CIRC. END SEAMS - DOUBLE RIVETED LAP JOINT.  
WORKING PRESSURE = 180 LBS / SQ. INCH TEST PRESS = 320 LBS / SQ. INCH  
ALL RIVET HOLES TO BE DRILLED AFTER PLATES ARE BENT &  
FITTED TOGETHER, THEN PLATES TAKEN APART & BURRS REMOVED  
RIVETING TO BE DONE BY HYDRAULIC PRESSURE WHERE PRACTICABLE.

MATERIAL	THICKNESS	TENSILE STRENGTH
SHELL PLATES	1 1/2"	28 TO 32 TONS
INNER BUTT STRAPS	1 1/2"	"
OUTER BUTT STRAPS	3/4"	"
GIRDER PLATES	3/4"	"
FRONT BOTTOM END	1 1/2"	26 TO 30 TONS
BACK BOTTOM END	1 1/2"	"
TOP ENDS	1 1/2"	"
BACK TUBE PLATE	1 1/2"	"
C.C. BACKS	1 1/2"	"
C.C. TOPS & SIDES	1 1/2"	"
FURNACES	1 1/2"	"
MANHOLE DOUBLING	1 1/2"	"
LONGT. STAYS	1 1/2"	28 TO 32 TONS
SCREWED STAYS	1 1/2"	26 TO 30 TONS

GRATE AND HEATING SURFACES	SQ. FT.
HEATING SURFACE IN 334 TUBES	= 1712.0
" IN C. CHAMBERS & BACK TUBE PLATE = 238.8	
" IN FURNACES = 159.5	
TOTAL HEATING SURFACE IN ONE BOILER	= 2110.3
" 4 BOILERS	= 8441.2
FIREBARS 5'-3" LONG IN TWO LENGTHS.	
GRATE SURFACE IN ONE BOILER	= 51.2 1/2
" 4 BOILERS	= 204.8 1/2
RATIO:- G.S.:H.S.: 1: 41.2	
2 - 3 1/4" DIA. SAFETY VALVES ON EACH BOILER (COAL & OIL BURNING)	

SEAM	HOLE DIA.	PITCH	PLATE	RIVET	COMBINED WORKS PRESS
LONGITUDINAL	1 3/16"	8 1/4"	85.38	87.2	89.2 182.9 LBS / SQ. INCH
CIRCUMFERENT	1 1/8"	3.478	85.8	46.2	

BOILERS  
ENGINES NO. 586

4 - OFF.

TO PASS LLOYD'S REQUIREMENTS & TESTS FOR A

WORKING PRESSURE OF 180 LBS / SQ. INCH

13'-9" EXTERNAL DIA. x 11'-9" EXTERNAL LENGTH.

SCALE 1" = 1 FOOT.

14<sup>TH</sup> FEB. 1921.

DRC. NO. 1658.



Kincaidi In 586  
to Main Amine  
180 lb. W.P.

W Hamilton the  
J. J. In 383

J. J. Davangai  
Greenock Report No 17955

ENCLOSURE  
No 7

ENCLOSURE  
No 771

RETAIN

W135(-0103



© 2021

Lloyd's Register  
Foundation



JOHN G. KINCAID & CO. LTD.  
(DRAWING OFFICE)  
15 FEB. 1921  
ENGINEERS & BOILERMAKERS  
GREENOCK.

W1351-0103



© 2021

Lloyd's Register  
Foundation