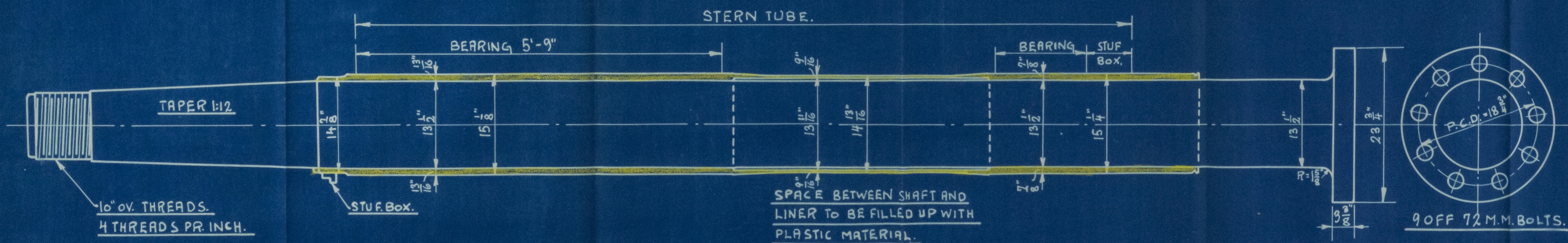
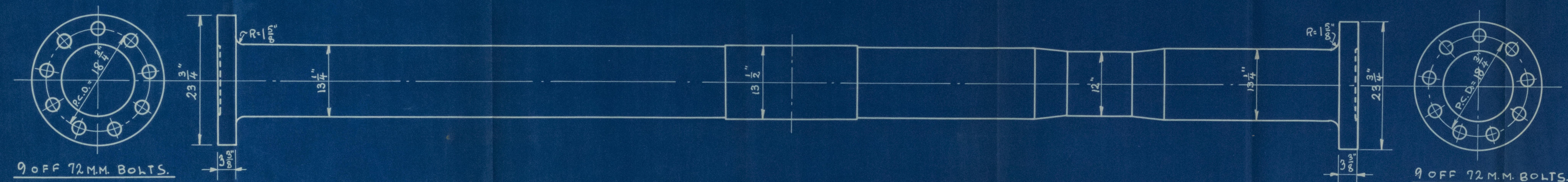
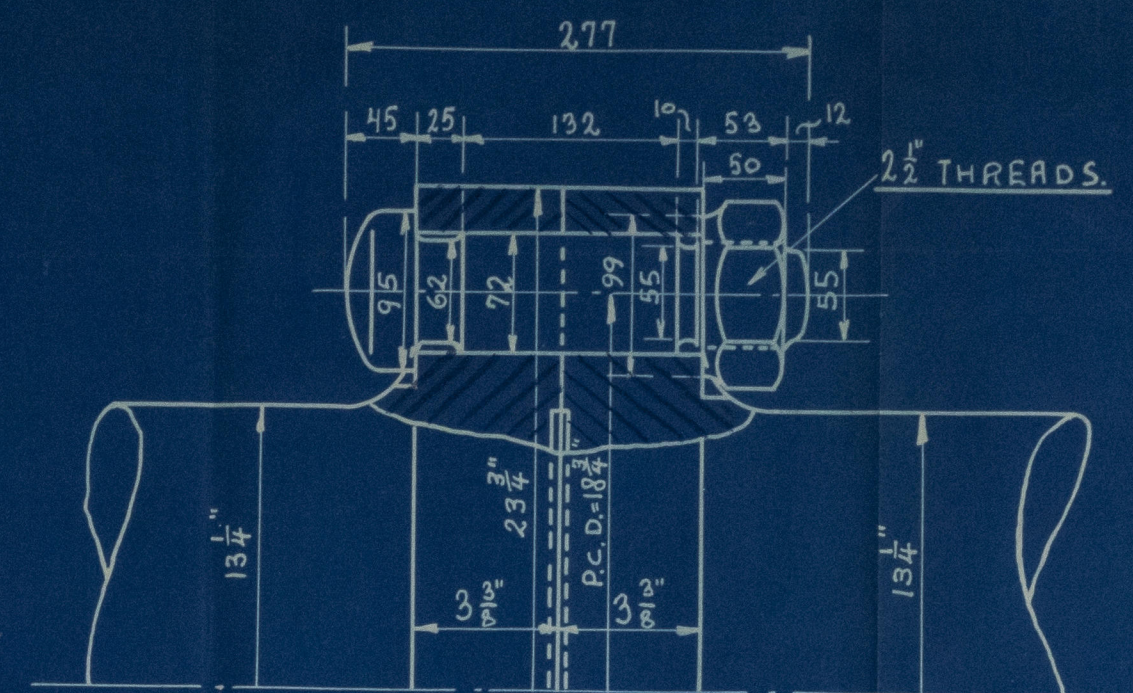
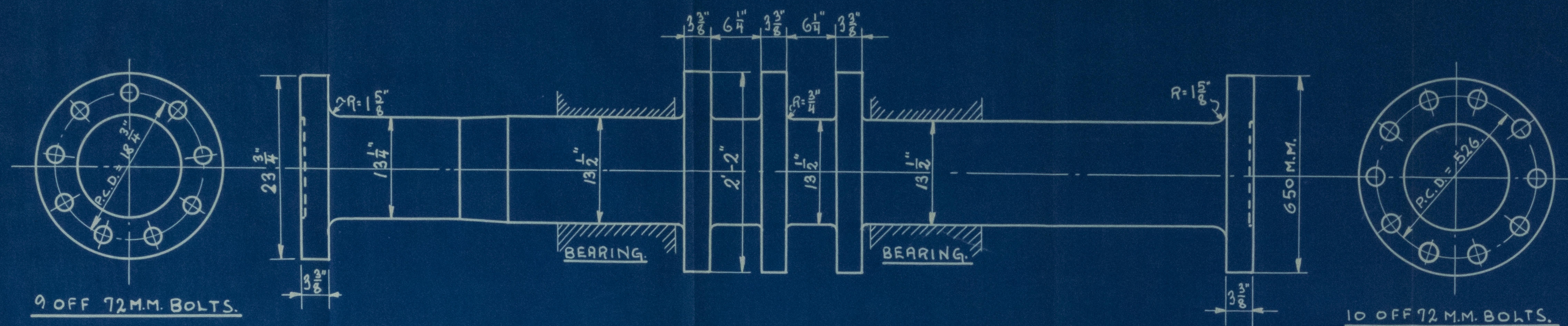


34958



SHAFTS FOR NAKSKOV YARD N° 33

6 CYLINDER FOUR STROKE CYCLE DIESEL ENGINE.

CYLINDER DIAM. = 590 M.M. = 23.25" DIAM. OF PROPELL. = 12'-6"

STROKE = 1100 M.M. = 43.31"

REVS. PR. MIN. = 145

ROTATING BALANCE WEIGHT AT CRANK SHAFT = $G.D^2 = 18400$

TURNING GEAR WHEEL " " " " = $G.D^2 = 1700$

G = ROTATING WEIGHTS.

D = GYRATIONS DIAMETER.

TOTAL $G.D^2 = 20100$

AKTIESELSKABET
BURMEISTER & WAINES MASKIN- OG SKIBSBYGGERI

8-6-1927

R-13

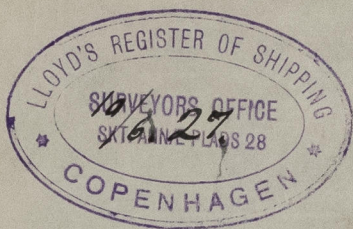
AKTIESELSKABET
BURMEISTER & WAINES

MASKIN- OG SKIBSBYGGERI

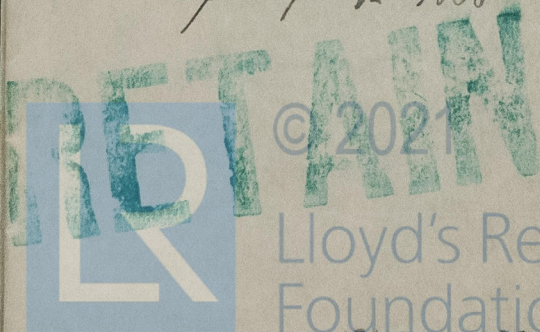
20-5-1927 N° 34958.

11342-0024

Plan of
THRUST, INTERMEDIATE
AND SCREW SHAFTS
for the Twin Screw Motor Vessel
Yard N^o 33
being built by
art. Nakske-Isbærget.
Nakske.



M/s "SIR KARL KNUDSEN" of Od.
Cp. Rpt. of 7858.



© 2021

Lloyd's Register
Foundation

W1342 - 0059