

71.
16-4-20

16/2/23

THE NORTH EASTERN MARINE ENGINEERING CO. LTD.

WALLSEND-ON-TYNE

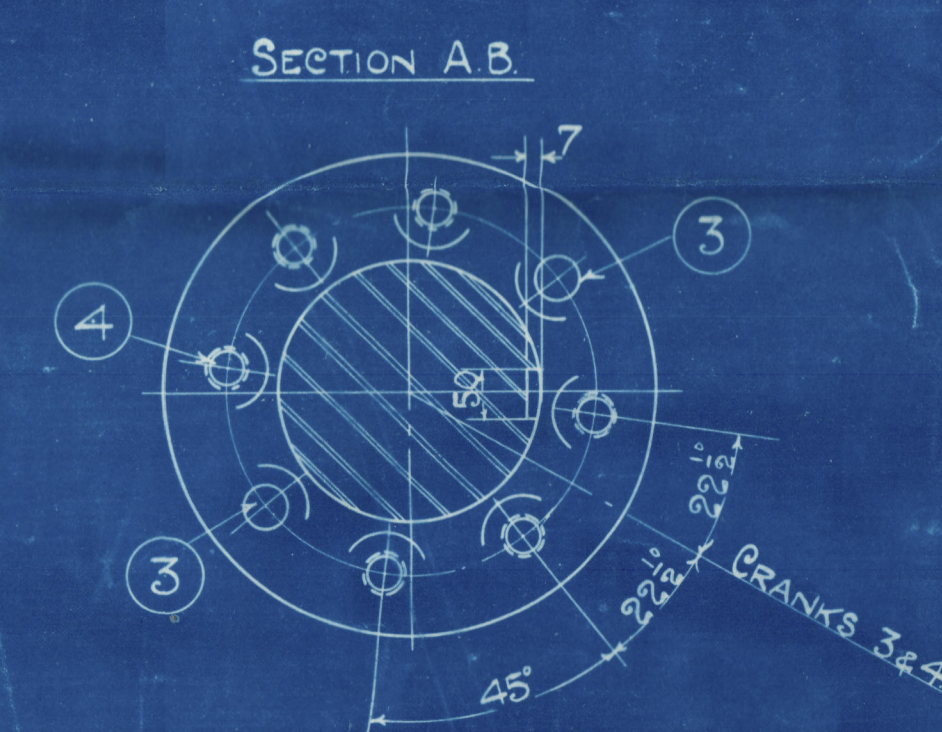
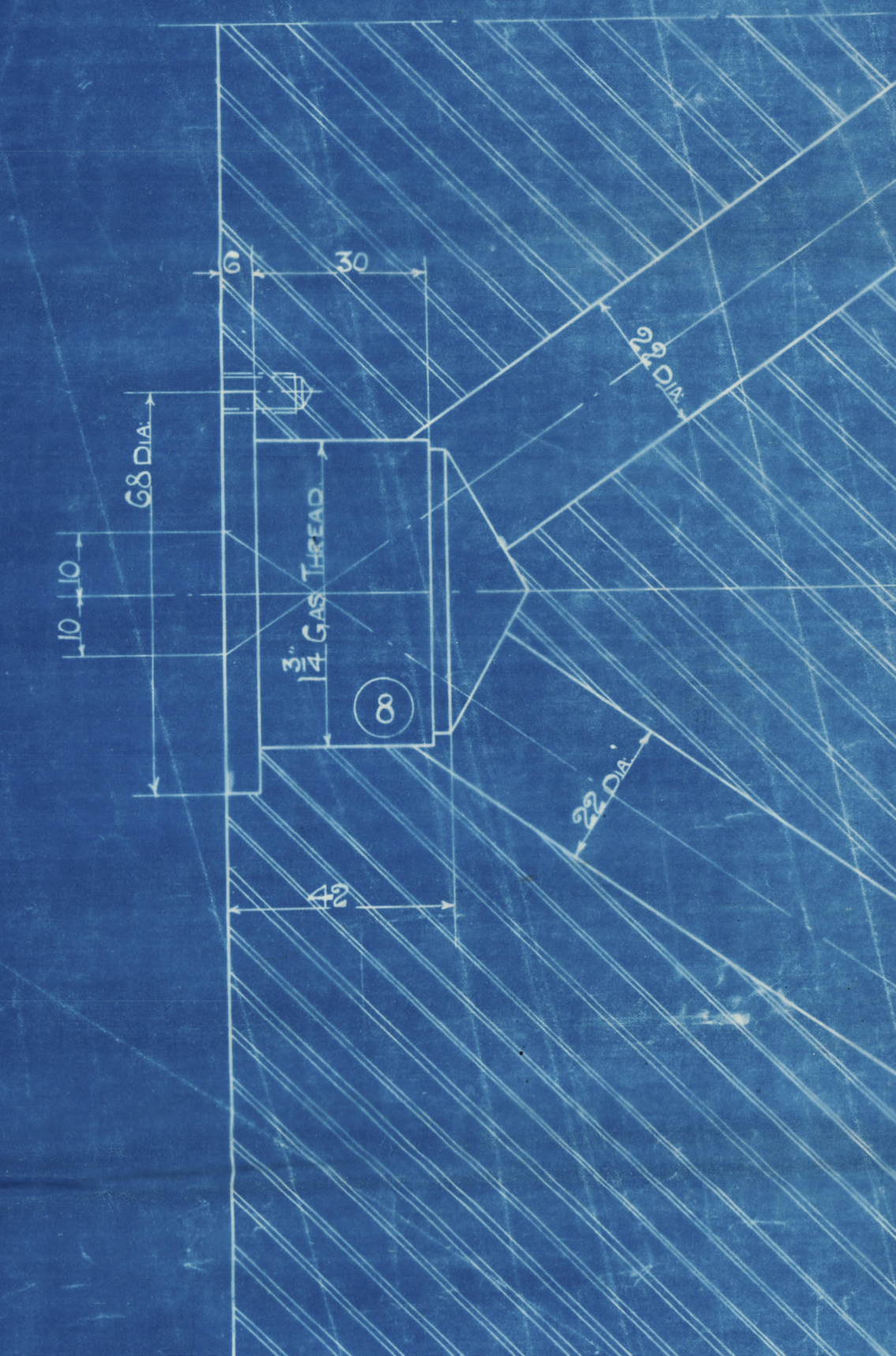
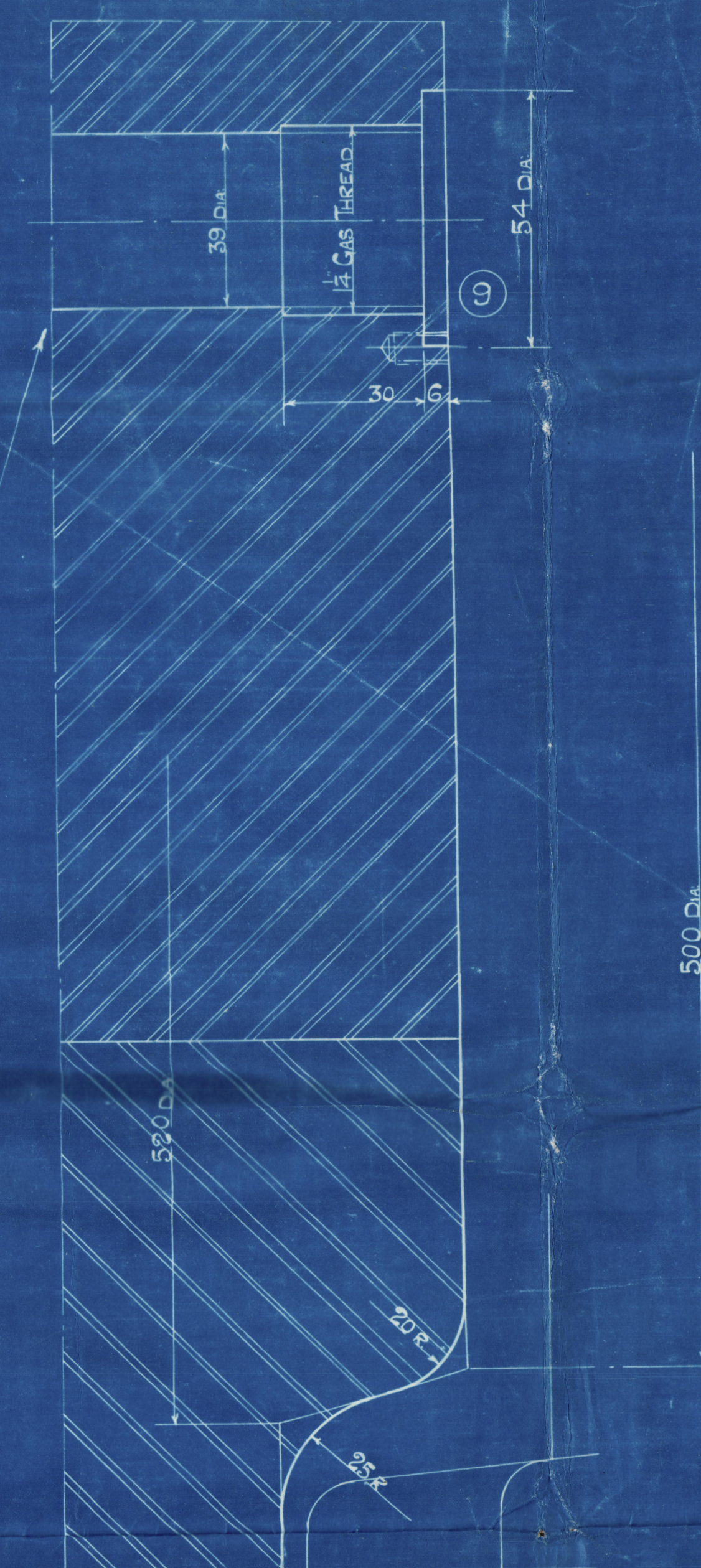
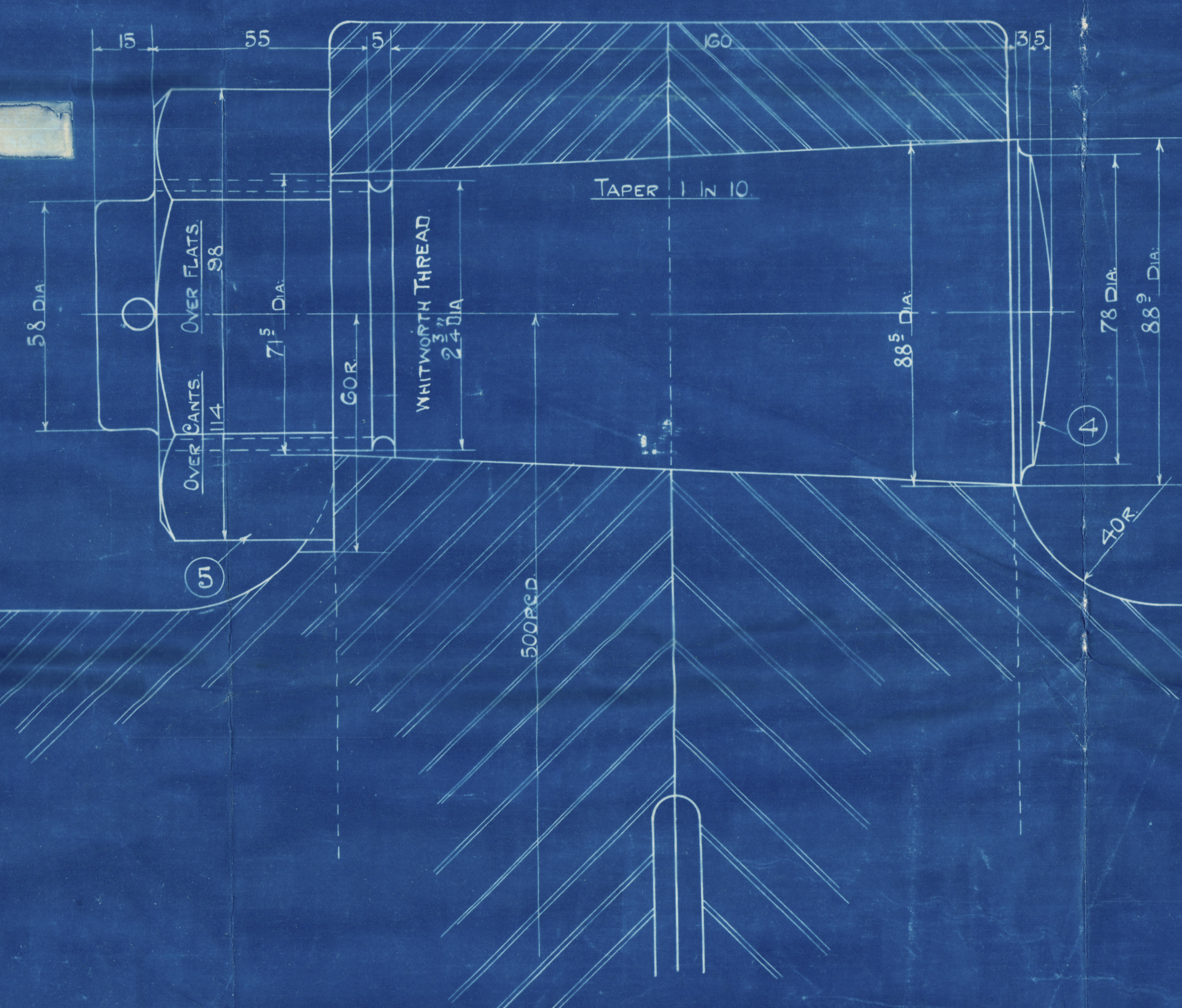
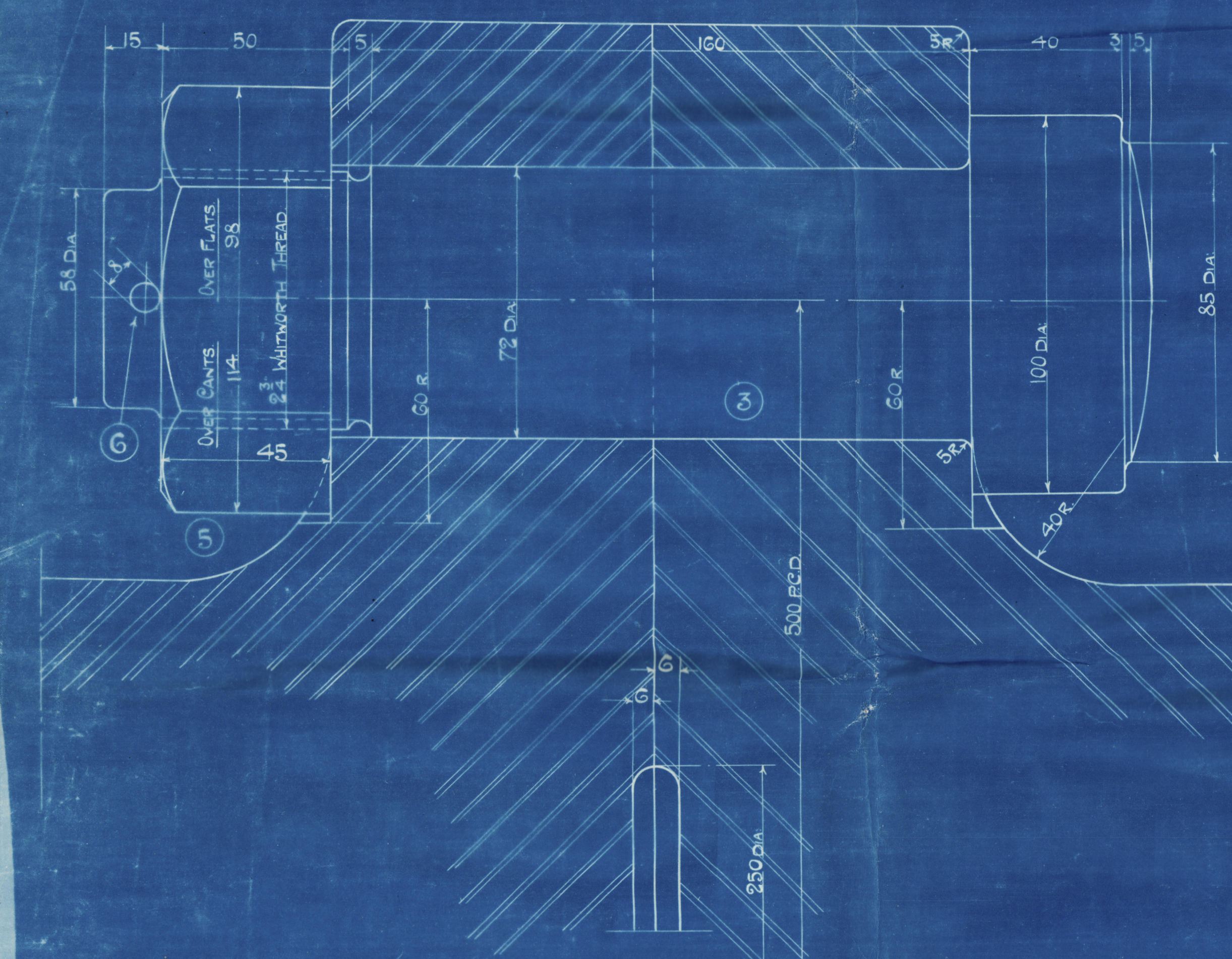
TRACING N° 551

CRANK SHAFT

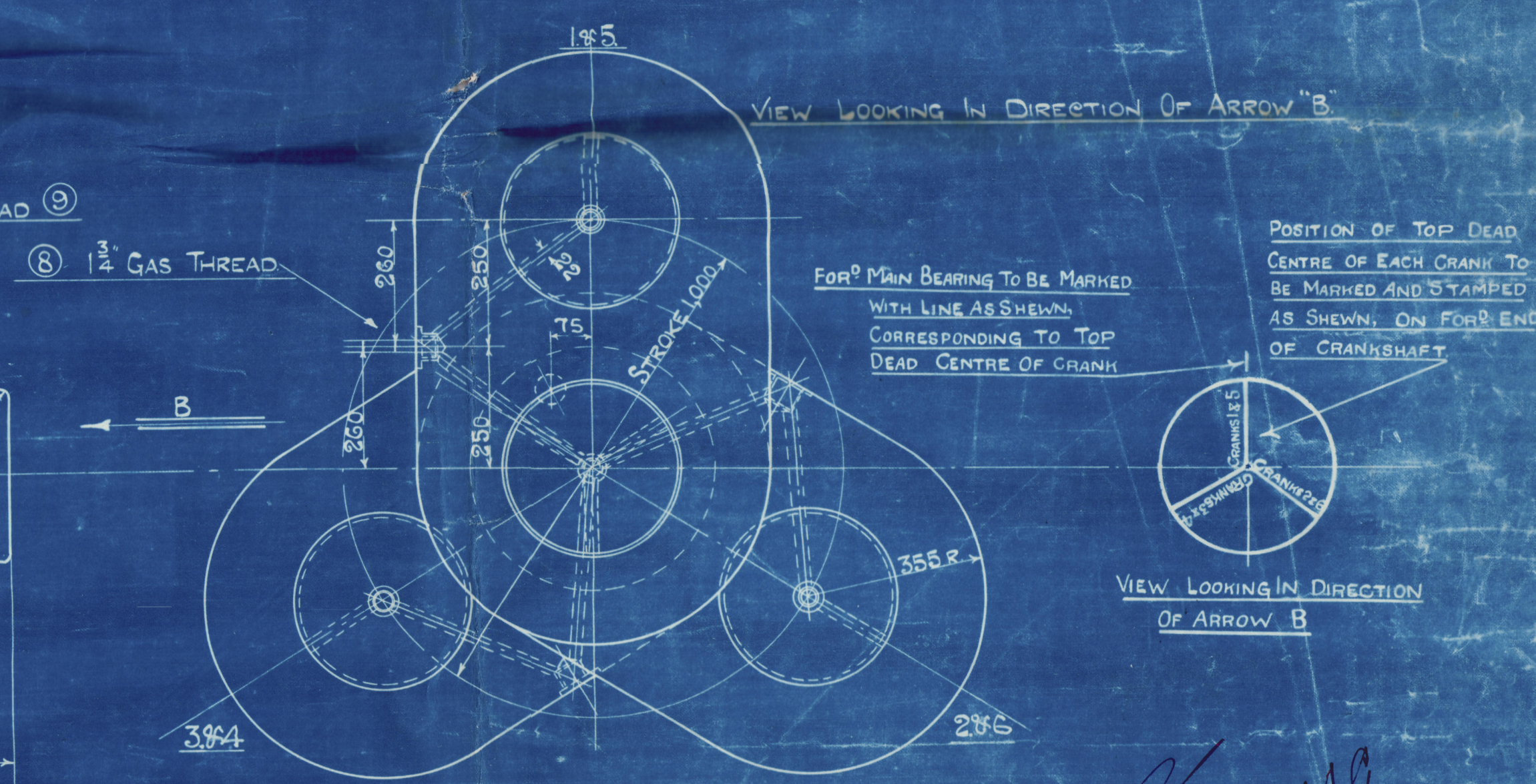
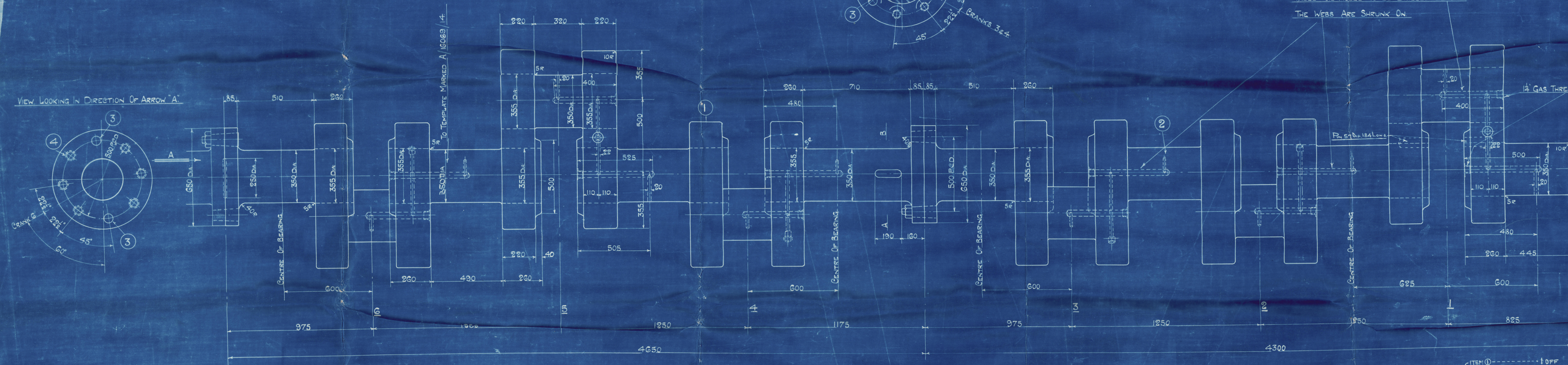
WORKSPOOR'S DR° N° 16069-14

SCALE: FULL SIZE + 1/16"

NOTE:- TO BE FINISHED COMPLETE WITH HOLES BORED TO TEMPLATE.
THE WHOLE TO BE IN ACCORDANCE WITH LLOYD'S REQUIREMENTS.



THESE OIL HOLES TO BE DRILLED BEFORE
THE WEBS ARE SHRUNK ON



SPARE GEAR FOR C. 2505

ITEM	DESCRIPTION	MATERIAL	QTY
1	CRANK SHAFT	INGOT STEEL	2
2	STRAIGHT BOLTS	STEEL	2
3	TAPERED	STEEL	2
4	NUTS	WROUGHT IRON	32
5	SPUR PIN	MILD STEEL	32
6	PINS (GAS THREAD)	BRASS	12
7	" (")	"	24

CONTRACT.	SINGLE OR TWIN	CONTRACT.	SINGLE OR TWIN
2505	TWIN.		

W134-0160

15/2/23

DRAWING NUMBER
618

NEW NORTH EASTERN MARINE

ENGINEERING CO., LTD.

ENGS. No 2885

TYPE IRON S.B.G. LO. 5. 225.

CRANK SHAFT.

Cyls. 56 in dia x 1000 in stroke

S. S. WELLFIELD.

77652.

Lloyds Surveyors

for

Letter to L.S.M.S.
28/1/22

W134-0160



M. E. Marine & Co Ltd



© 2019

Lloyd's Register
Foundation