

24127

5800-081 M



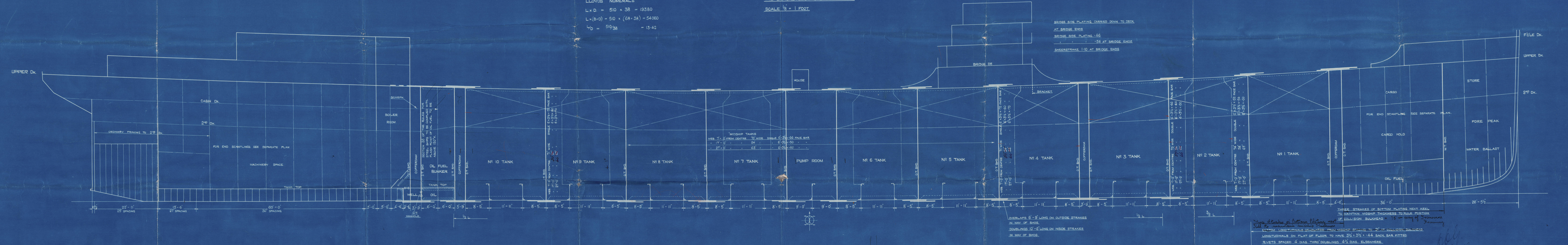
TSMS. N^o 517-18
PROFILE

LENGTH B.P. 510'-0" BREADTH MLD. 68'-0" DEPTH MLD. 38'-0"

THE BRACKETLESS SYSTEM PATENT

SCALE 1/8" = 1 FOOT.

LLOYDS NUMERALS
L x D. = 510 x 38 = 19380
L x (B+D) = 510 x (68+38) = 54060
L/D = 510/38 = 13.42



BRIDGE SIDE PLATING CARRIED DOWN TO DECK
AT BRIDGE ENDS
BRIDGE SIDE PLATING .46
.54 AT BRIDGE ENDS
SHEERSTRAKE 1-10 AT BRIDGE ENDS

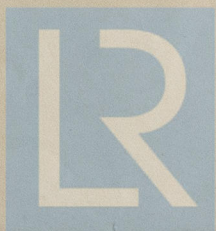
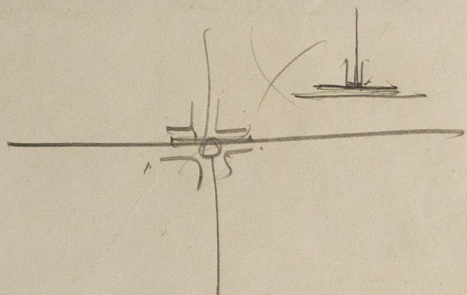
OVERLAPS 6'-9" LONG ON OUTSIDE STRAKES
IN WAY OF SHDS.
DOUBLINGS 10'-6" LONG ON INSIDE STRAKES
IN WAY OF SHDS.

THREE STRAKES OF BOTTOM PLATING NEXT KEEL
TO MAINTAIN MIDSHIP THICKNESS TO RULE POSITION
OF COLLISION BULKHEAD = 75" in way of Framing
Longitudinals on flat of floor to have 3/8 x 3/8 x .44 BACK BAR FITTED
RIVETS SPACED 4 DIAS. THRO DOUBLINGS 4 1/2 DIAS. ELSEWHERE

J. W. ISHERWOOD,
4 LLOYD'S AVENUE,
LONDON, E.C.
ISHERWOOD SYSTEM OF
SHIP CONSTRUCTION
DATE 13.1.27

II N^o 1529-26
Plan N^o 4223
13.1.27





© 2019
Lloyd's Register
Foundation

Stephens 517-8

Engrile

11th 1/4

Victrola

No 518

Wincote

GLASGOW REPORT NO. 47740

GLASGOW REPORT NO. 48017

W134-0033