

SURFACES		ONE BOILER	2 BOILERS
TUBES		2328	4656
FIREBOX TOP & SIDES		163	326
" BACK		92	184
TUBE PLATE		70	140
FURNACES		167	334
TOTAL HEATING SURFACE		2820	5640
GRATE AREA (5" x 6" BARS)		61	122
TUBE AREA		1464	2928
WATER		165	330
STEAM SPACE		730	1460
GRATE AREA: HEATING SURFACE			
" : TUBE			
" : WATER			
" : STEAM SPACE			
% BOILER ABOVE FIRE BOX		31.4	
WEIGHT OF WATER		26.2 TONS	53 TONS

TOTAL HEATING SURFACE ALL BOILERS = 20,610 sq ft
 " GRATE AREA " " = 572 sq ft

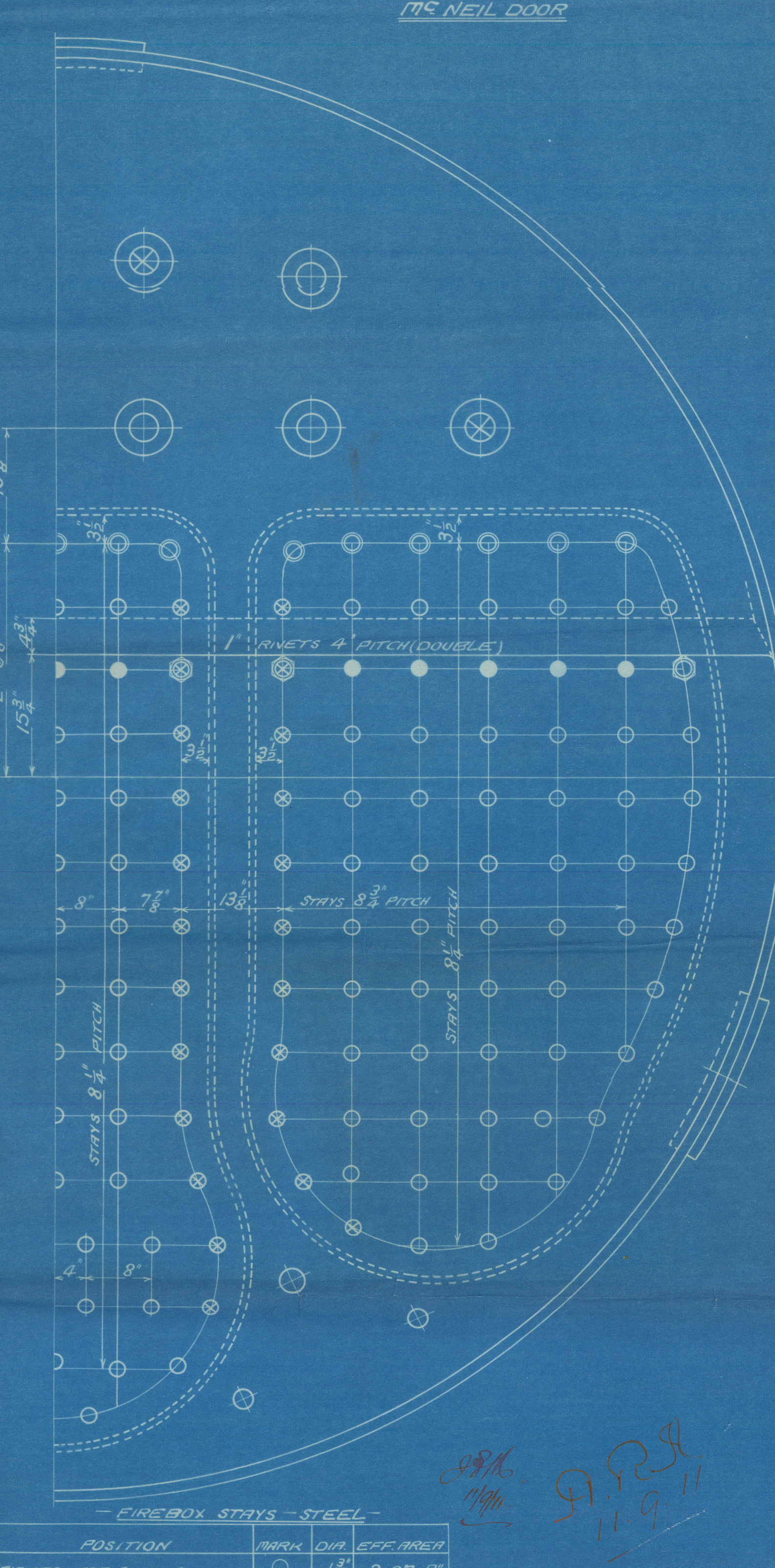
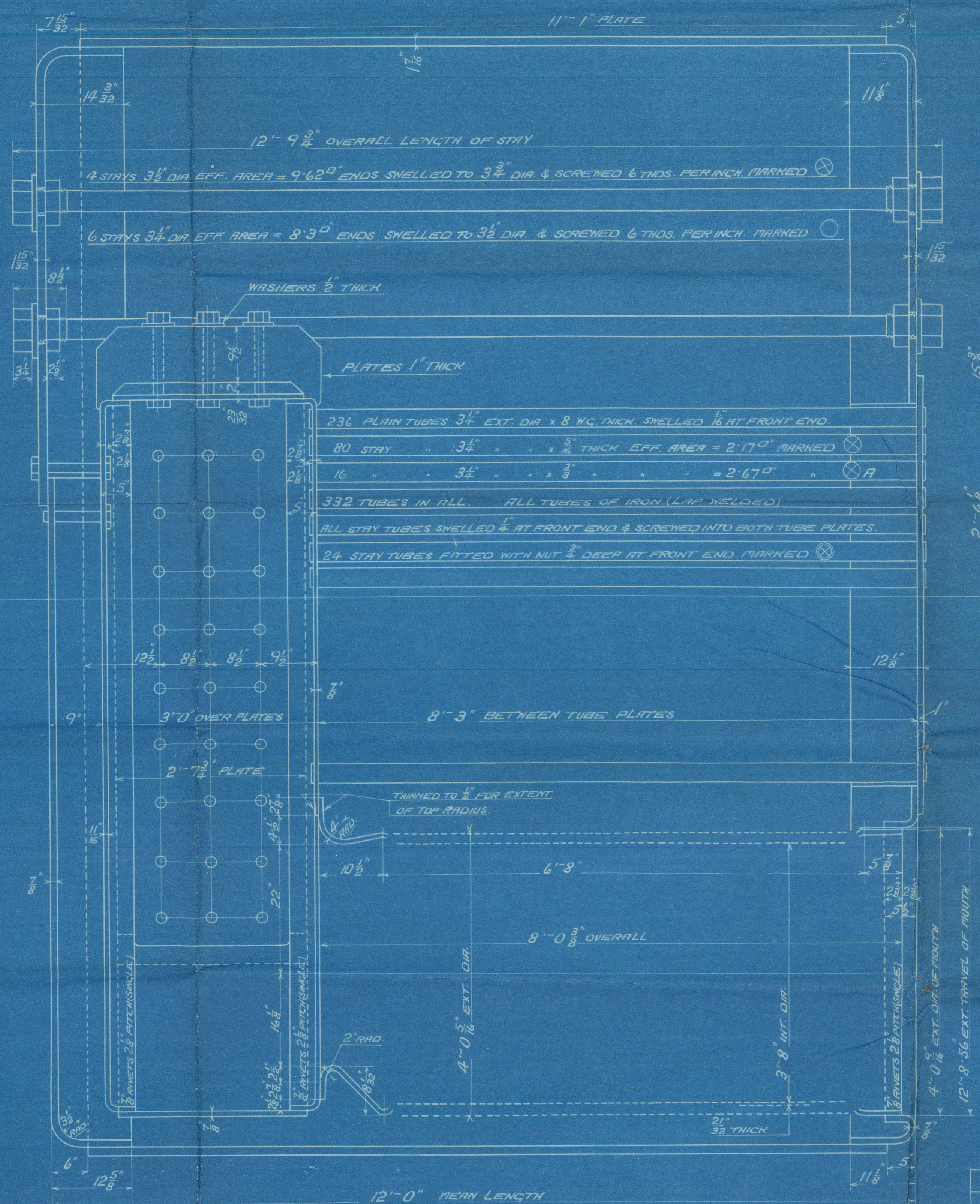
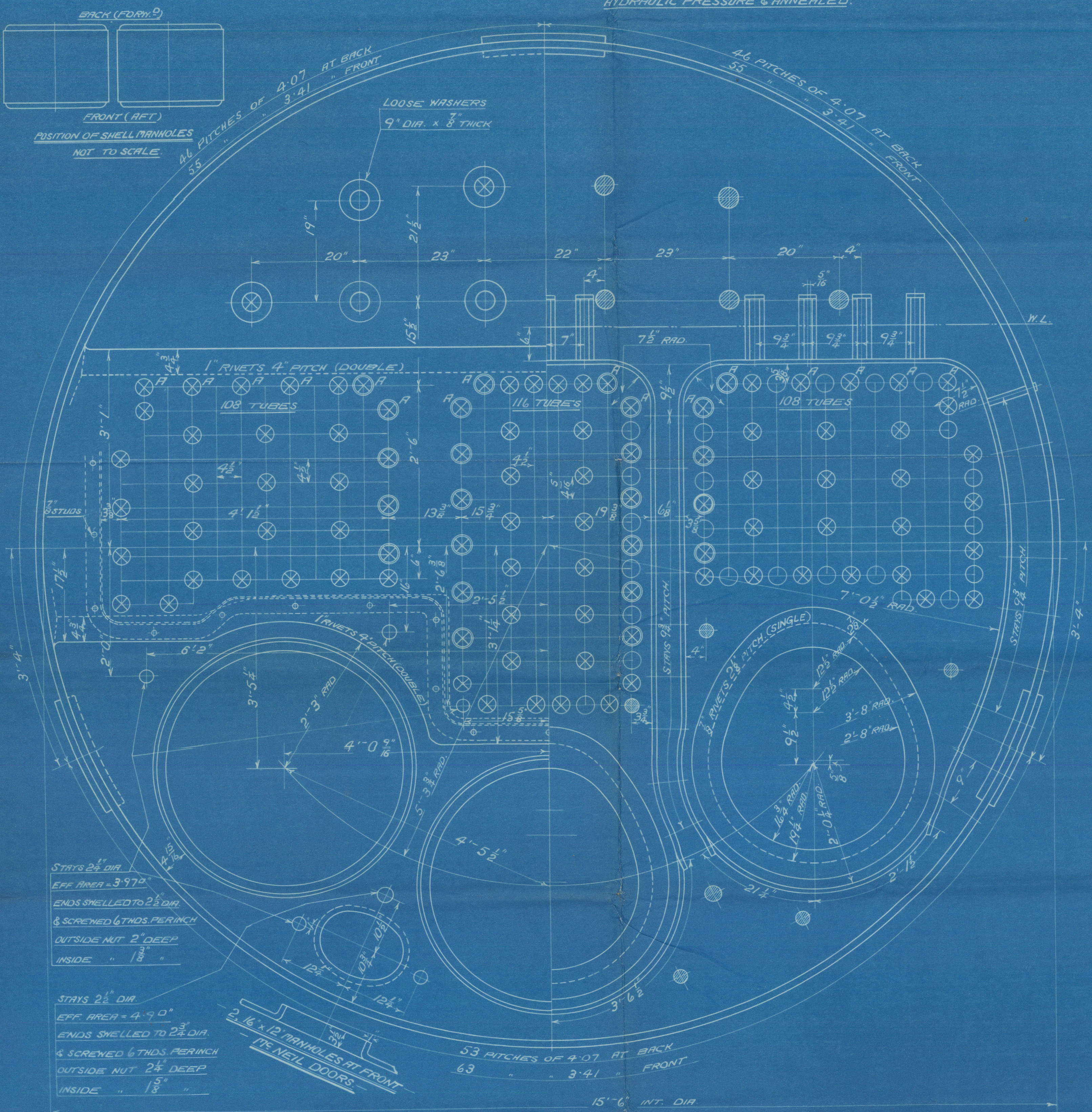
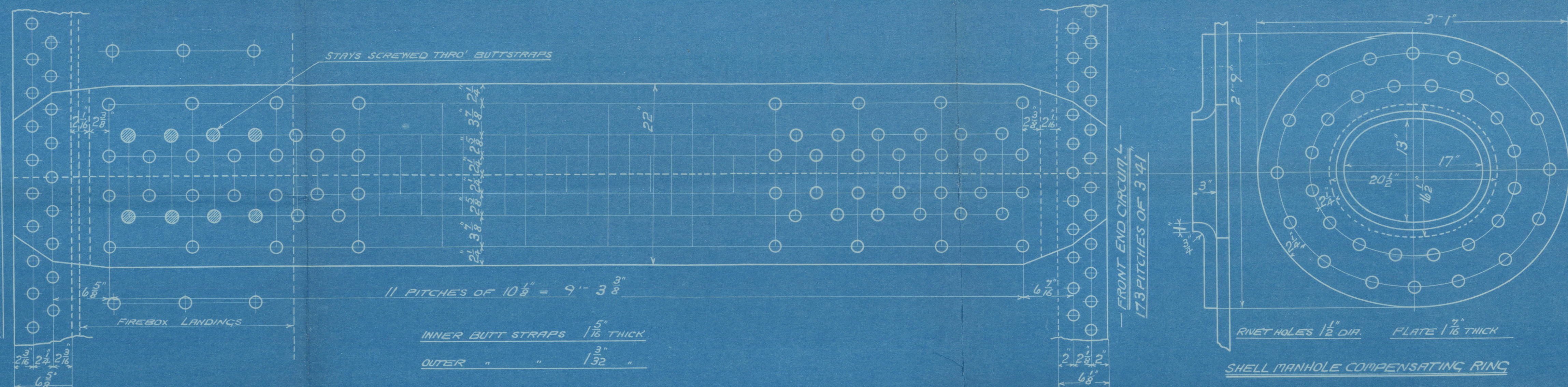
RIVETING		LONG	BACK END CIRC L	FRONT END CIRC L
RIVET HOLE DIA		1 1/8	1 1/8	1 1/8
PITCH		10 1/8	4 0/8	3 4/8
% PLATE		85.18	64.6	61.5
% RIVET		90.2	47.2	47

LIMITS OF TENSILE STRENGTH & MATERIAL		28.45 TO 32 TONS	
SHELL, BUTTSTRAPS & GIRDER		26	30
OTHER PLATES		26	30
FURNACES		26	30
MAIN STAYS		26	30
SCREWED STAYS		26	30
RIVET BARS		26	30

ALL RIVET HOLES DRILLED IN PLACE
 MAIN STAYS SWELLED AT ENDS BY
 HYDRAULIC PRESSURE & ANNEALED.

BACK END CIRCUM L

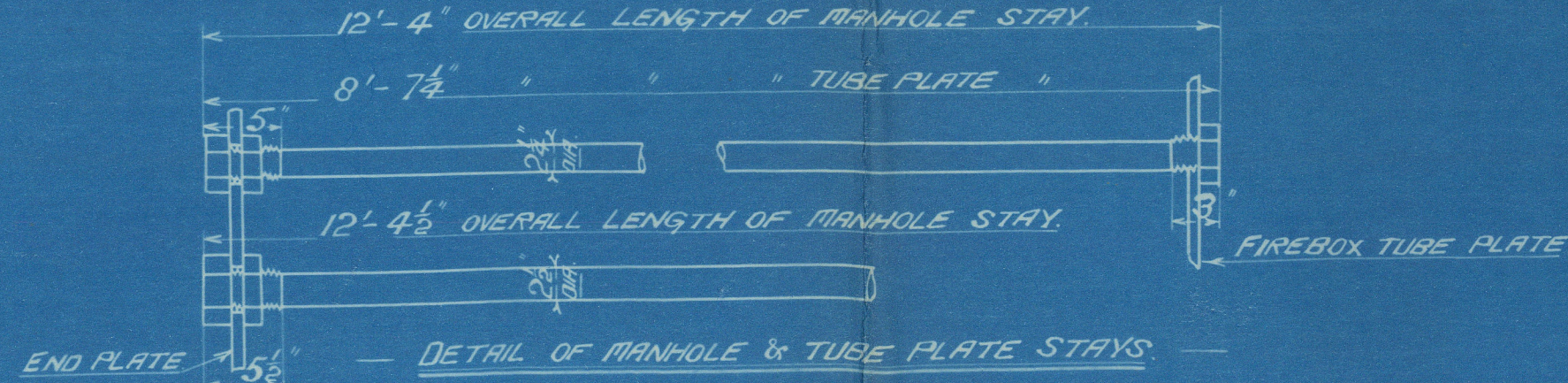
92 PITCHES OF 4.07 AT BACK & 53 PITCHES OF 4.05



MAIN BOILER S.E.
 2 OFF
 CON: N^o 572/3
 WORKING PRESSURE - 215 LBS. PER SQ. INCH.
 TO PASS LLOYD'S SURVEY
 SCALE 1" = 1 1/2' - ONE FOOT.

FIREBOX STAYS - STEEL		MARK	DIA.	EFF. AREA
FIREBOX TOP SIDES & BACK		○	1 1/2"	2.07 sq in
" BACK, WIDE SPACE		○	1 1/2"	2.395 sq in
" TOP CORNER		○	2"	2.75 sq in

ALL STAYS SCREWED THRO' BOTH PLATES AND NUT FITTED AT EACH END EXCEPT WHERE OTHERWISE STATED ON DRAWING. ALL STAYS THRO' SHELL & STAYS MARKED IN BACK BOTTOM END TO PROJECT 3/4" THRO' OUTER PLATES & TO BE CAULKED. ALL 1 1/2" NUTS 1" DEEP EXCEPT ON GIRDER TOPS WHERE THE OUTSIDE NUTS ARE 1 1/2" DEEP. ALL 2" NUTS 1 1/2" DEEP.



OT 14783
 TRIN 6586
 TRADED 6TH SEPTEMBER 1911.

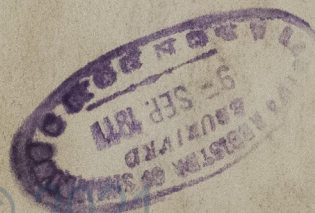
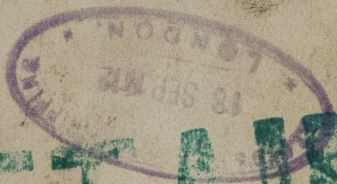
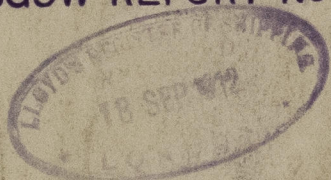
David Rowan & Co

No 572/3

J. C. Main Boiler.

1/2 "Infanta Isabel"

GLASGOW REPORT No. 31844



RETAIN LR

W1336-0083

© 2021

Lloyd's Register
Foundation