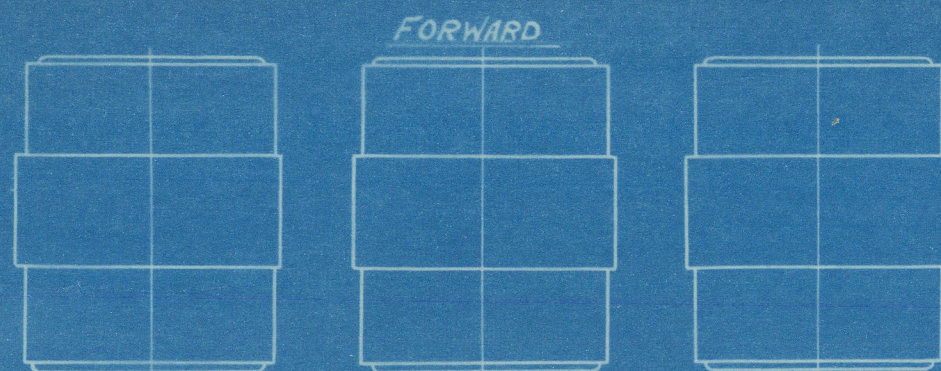
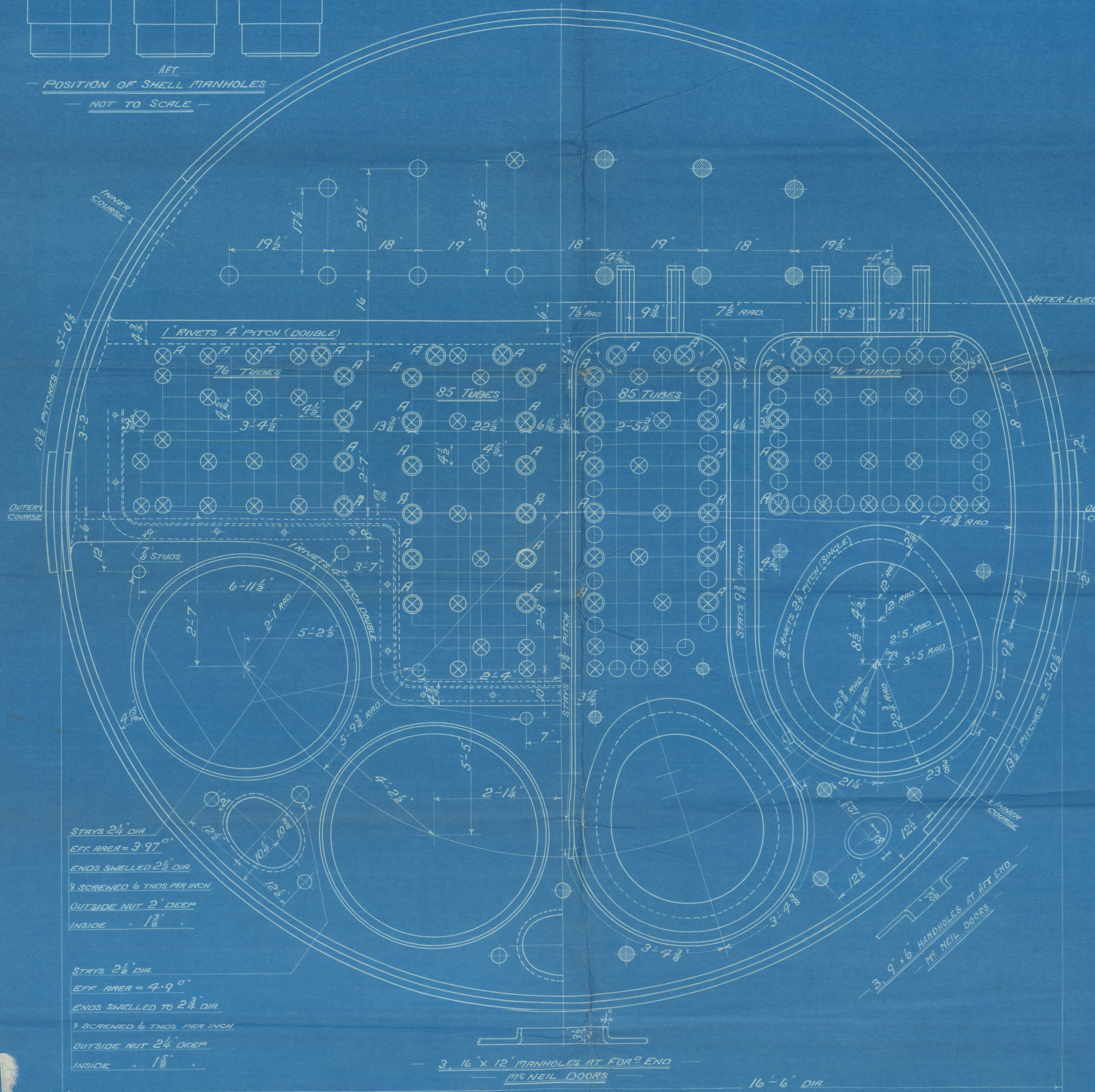


SURFACES		ONE BOILER	3 BOILERS
TUBES		4245 #	12735 #
FIREBOX TOP & SIDES		244	732
TUBE PLATE		113	339
FURNACES		388	1164
TOTAL HEATING SURFACE		4990 #	14970 #
GRATE AREA (5'-6" BARS)		150 #	450 #
TUBE AREA		28.1	84.3
WATER		275	825
STEAM SPACE		692	2076
GRATE AREA HEATING SURFACE			
TUBE			
AREA			
WATER			
STEAM SPACE			
% BOILER ABOVE FIREBOX		31.2	
HEIGHT OF WATER		47 TONS	141 TONS

TOTAL HEATING SURFACE ALL BOILERS = 20,610 sq ft
 GRATE AREA = 572 sq ft



POSITION OF SHELL MANHOLES
 NOT TO SCALE

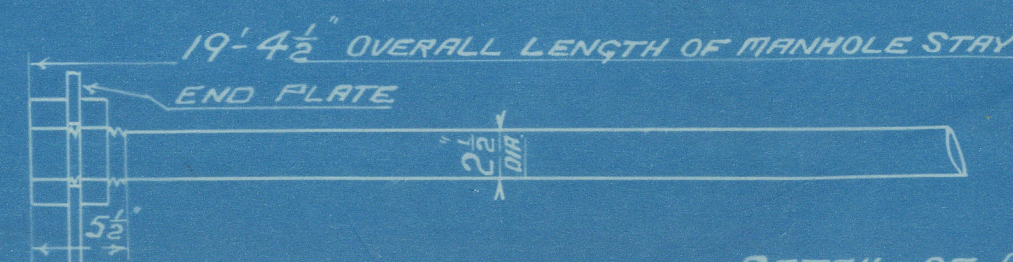


STAYS 2 1/2" DIA.
 EFF. AREA = 3.97 sq in.
 ENDS SHELLED TO 2 3/8" DIA.
 1/2" SCREWED 6 THDS PER INCH.
 OUTSIDE NUT 2" DEEP.
 INSIDE 1/8" DEEP.

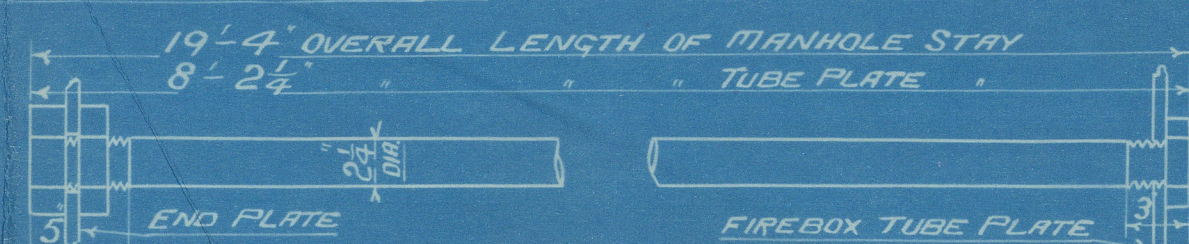
STAYS 2 1/2" DIA.
 EFF. AREA = 4.9 sq in.
 ENDS SHELLED TO 2 3/8" DIA.
 1/2" SCREWED 6 THDS PER INCH.
 OUTSIDE NUT 2" DEEP.
 INSIDE 1/8" DEEP.

3. 16" x 12" MANHOLES AT FORWARD END
 ITS NEIL DOORS

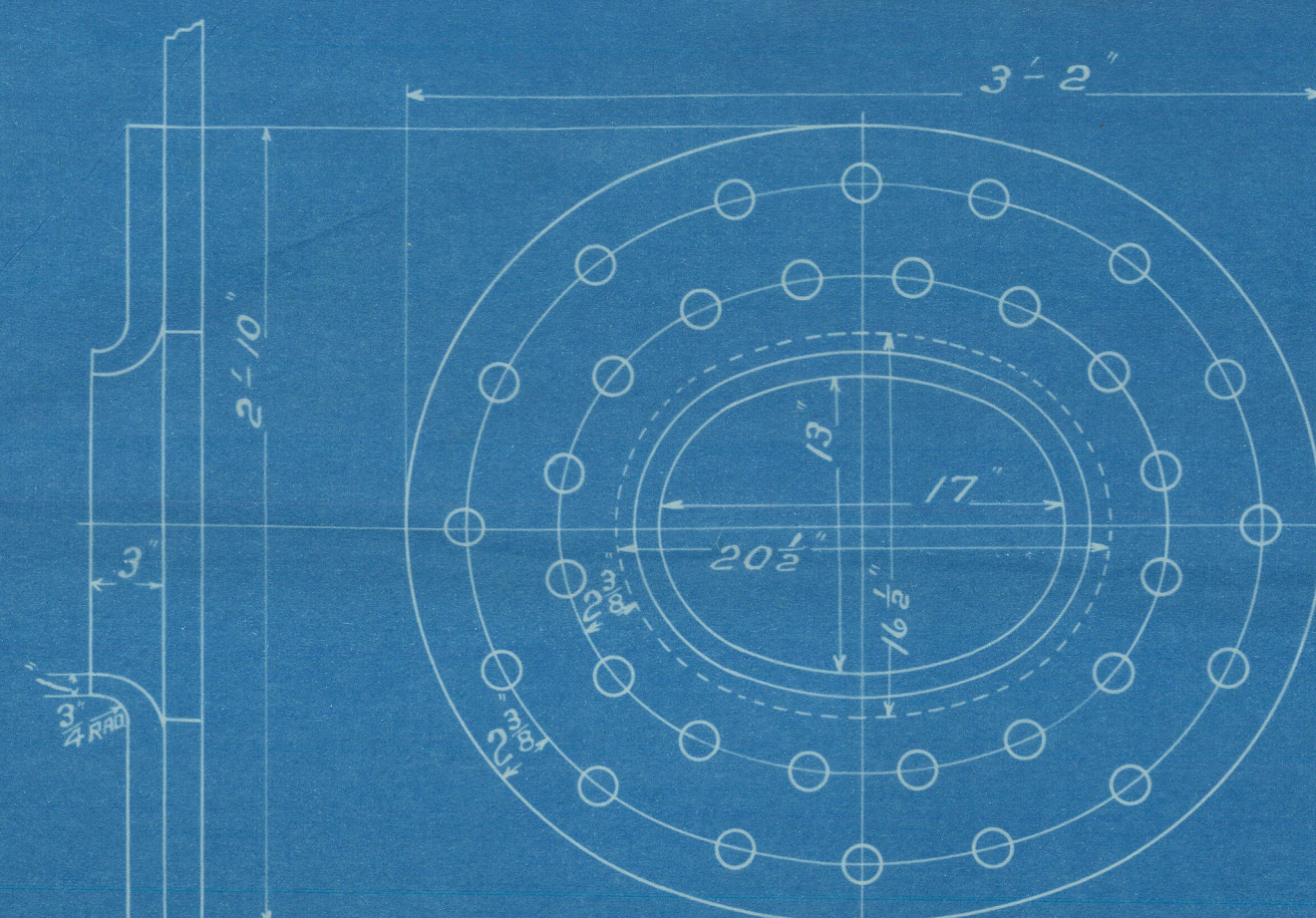
16'-6" DIA.



DETAIL OF MANHOLE & TUBE PLATE STAYS



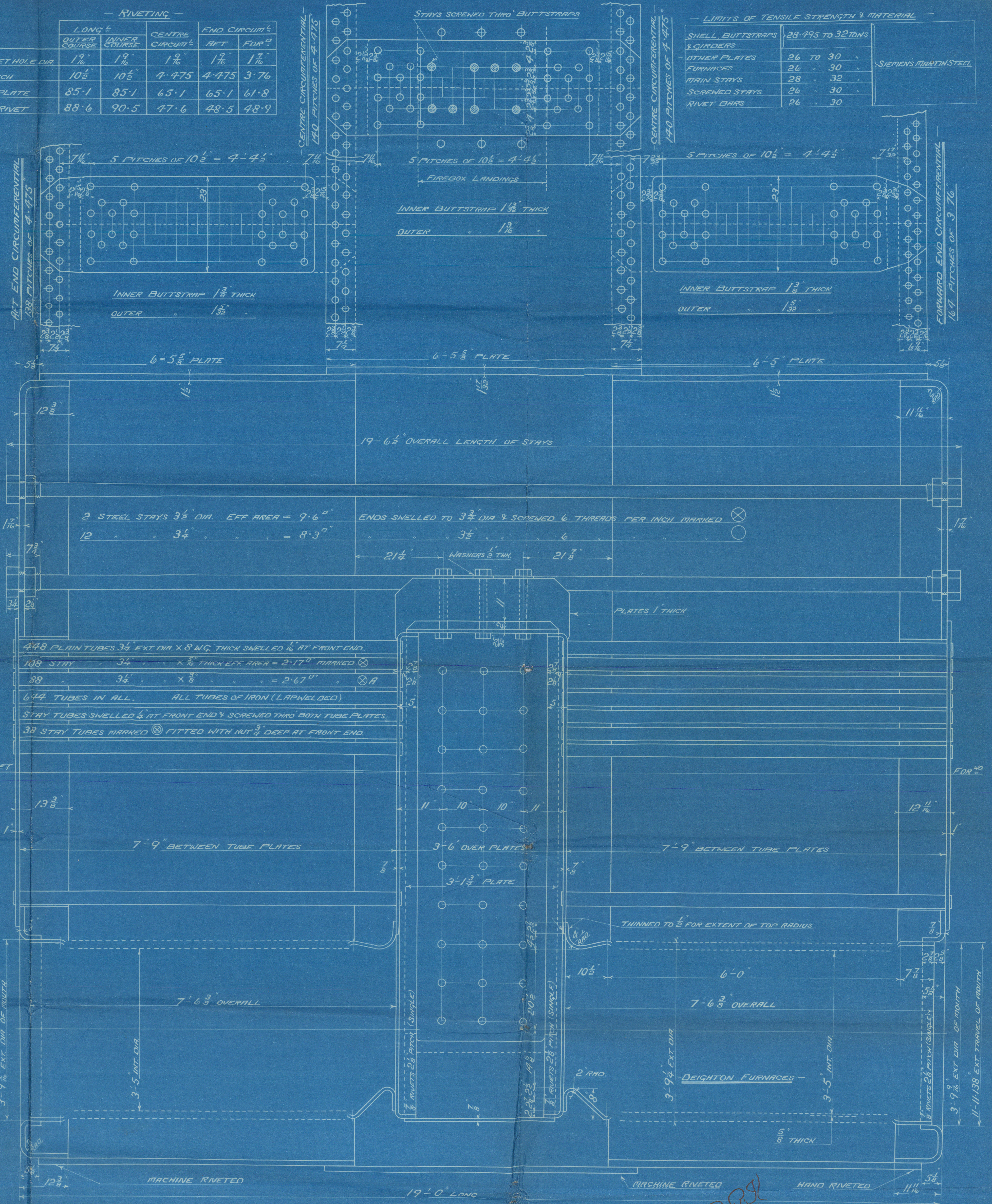
FIREBOX TUBE PLATE



RIVET HOLES 1 9/16" DIA. PLATE 1 3/32" THICK
 SHELL MANHOLE COMPENSATING RING
 ITS NEIL DOOR

ALL RIVET HOLES DRILLED IN PLACE.
 MAIN STAYS SHELLED AT ENDS BY
 HYDRAULIC PRESSURE & ANNEALED.

RIVETING		LONG %	CENTRE CIRCUM %	END CIRCUM %
OUTER COURSE		1 1/8"	1 1/8"	1 1/8"
INNER COURSE		1 1/8"	1 1/8"	1 1/8"
RIVET HOLE DIA.		1 1/8"	1 1/8"	1 1/8"
PITCH		10 1/2"	4-4 7/8"	4-4 7/8"
% PLATE		85.1	85.1	61.8
% RIVET		88.6	90.5	48.9



MAIN BOILER DE

3 OFF

CONT. NOS 572/3

WORKING PRESSURE 215 LBS PER SQ. INCH.

TO PASS LLOYD'S SURVEY

SCALE ONE INCH = ONE FOOT



FIREBOX STAYS - STEEL			
POSITION	MARK	DIA	EFF. AREA
FIREBOX TOP & SIDES	○	1 1/8"	2.395 sq in.

ALL STAYS SCREWED THRO' BOTH PLATES AND NUT FITTED AT EACH END EXCEPT STAYS THRO' SHELL WHICH PROJECT 3/8" AND ARE CAULKED.
 ALL NUTS 1 1/2" DEEP EXCEPT ON GIRDER TOPS WHERE THE OUTSIDE NUTS ARE 1 1/8" DEEP.

OT 14784.
 TIR 6555
 TRIPLEX 6 1/2" SEPTEMBER 1911

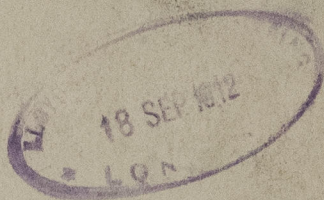
David Rawan & P^c

2^c 572/3

D.E. Main Boilers

5/8 "Infanta Isabel"

GLASGOW REPORT No. 31844



L. L. AIN

W1336-0082



© 2021

Lloyd's Register
Foundation

