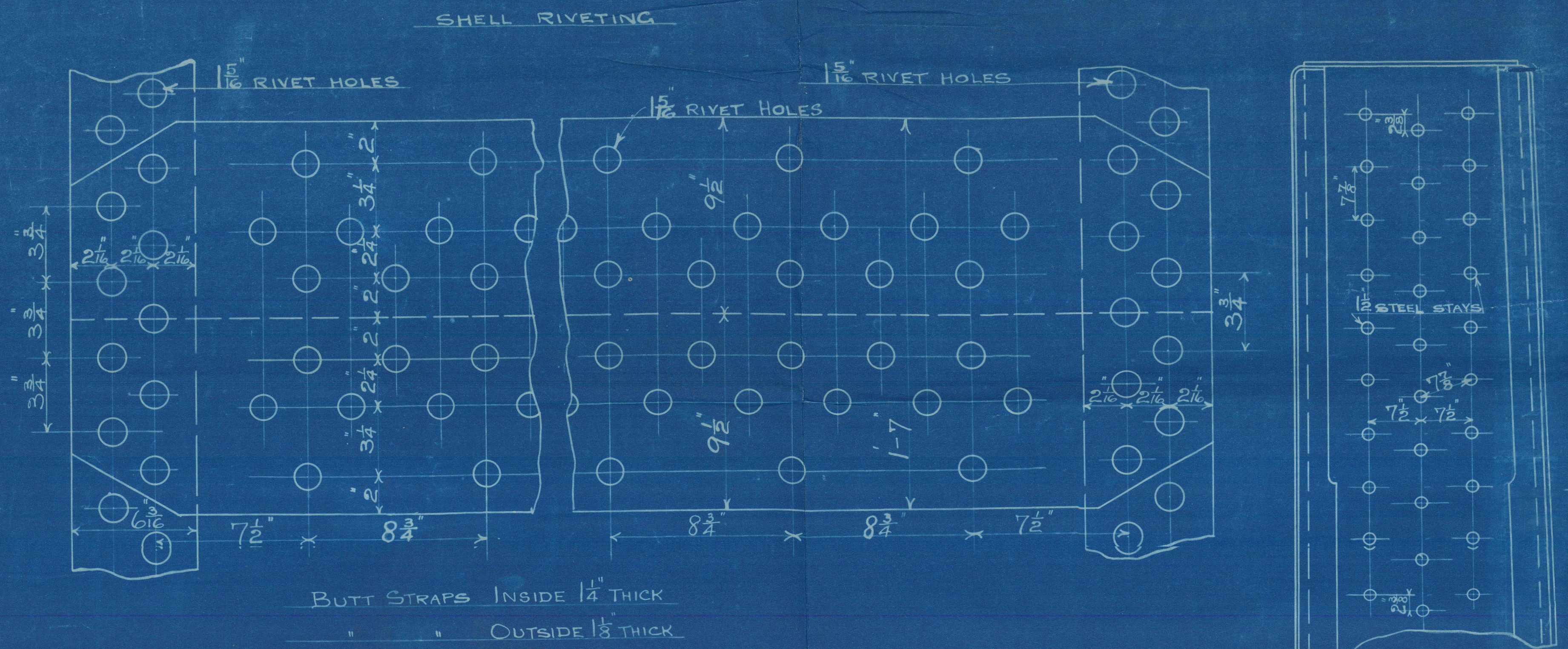


PALLION ENGINE WORKS

BOILER 3-0FF

TRACING S576

14/6/20



LONGITUDINAL JOINT

SECTIONAL AREA OF PLATE BETWEEN RIVET HOLES 85%

" " " RIVETS 87.6%

CIRCUMFERENTIAL JOINT

SECTIONAL AREA OF PLATE BETWEEN RIVET HOLES 63.33%

" " " RIVETS 46.7%

TENSILE STRENGTH OF MATERIAL

SHELL PLATES BUTT STRAPS & C.C. GIRDERS NOT LESS THAN 28 1/2 TONS AND NOT MORE THAN 32 1/2 TONS PER SQUARE INCH

COMBUSTION CHAMBER, TUBE & END PLATES NOT LESS THAN 26 TONS / INCH

LONGITUDINAL STAYS

SCREWED " " " 26 " / INCH

RIVETS " " " 27 " / INCH

WORKING PRESSURE 180 LBS PER SQ. INCH

TEST " " " 360 " " "

ALL RIVET HOLES IN SHELL TO BE DRILLED IN PLACE AFTER BENDING

HYDRAULIC RIVETING (WHERE POSSIBLE)

HEATING SURFACE

TUBES 2382.25 sq. ft.

COMBUSTION CHAMBERS 246.38 "

FURNACES 170.00 "

TUBE PLATES 89.35 "

TOTAL 2887.98 "

CRATE SURFACE (WITH 5" O'BARS) 63 sq. ft.

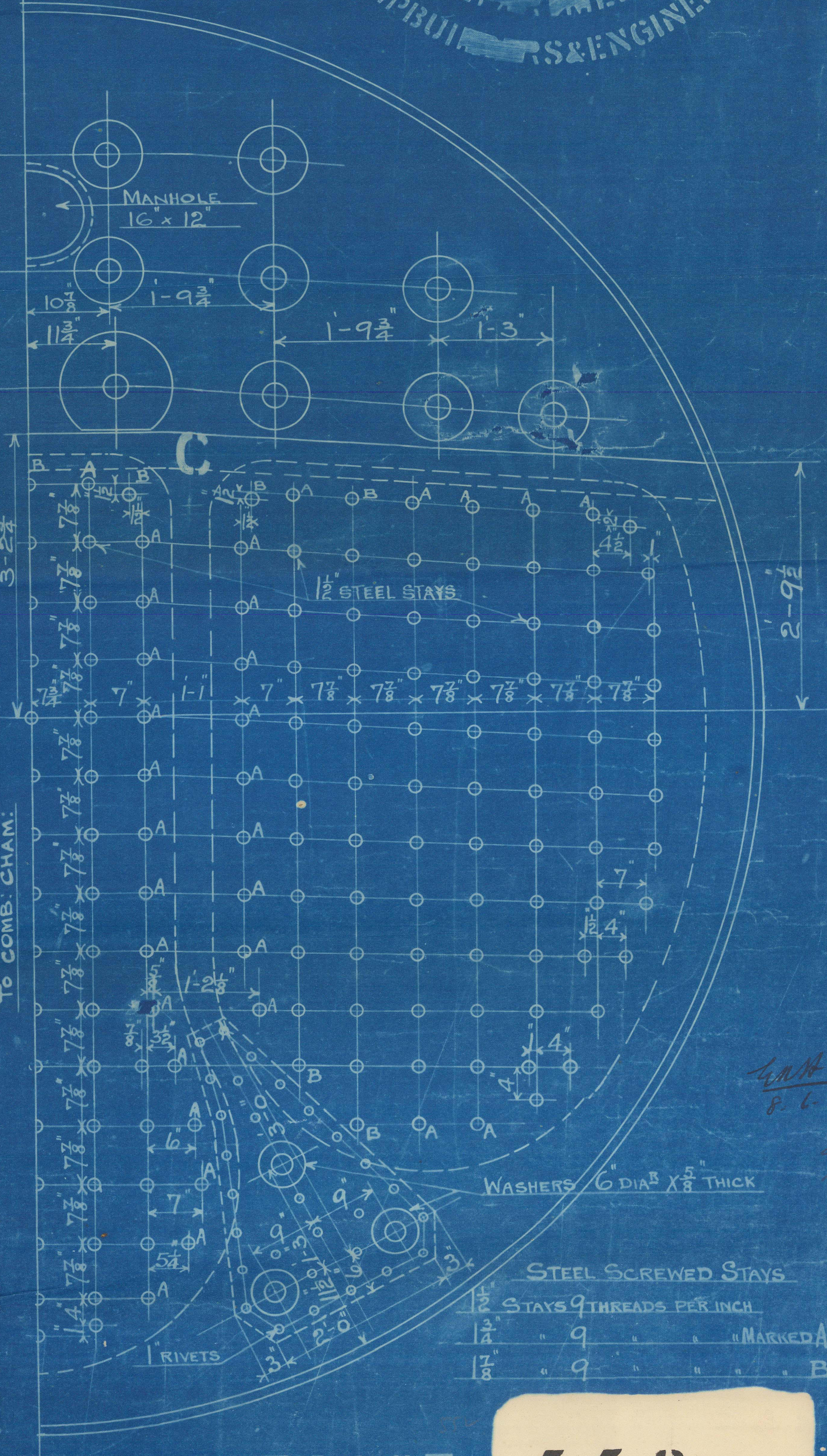
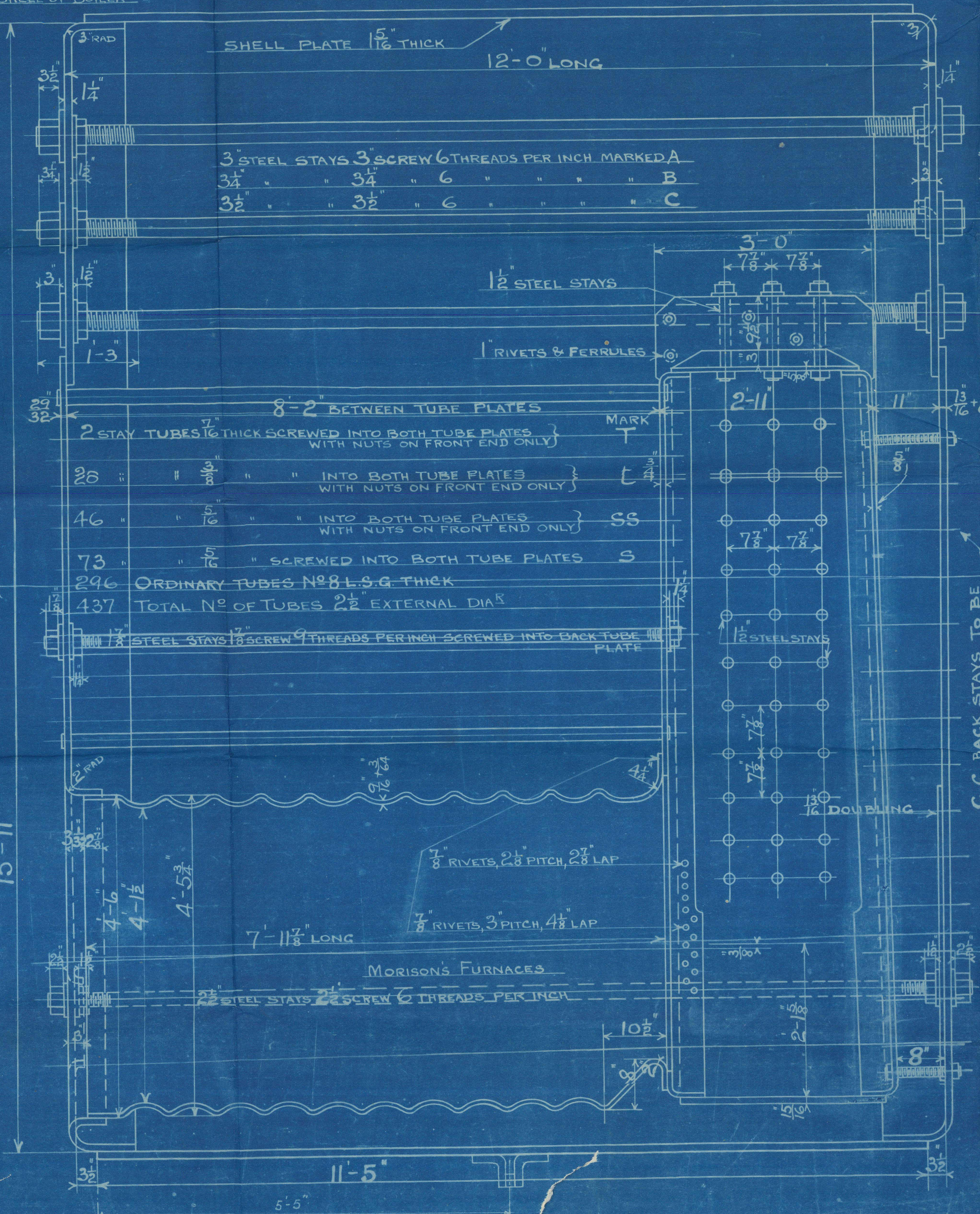
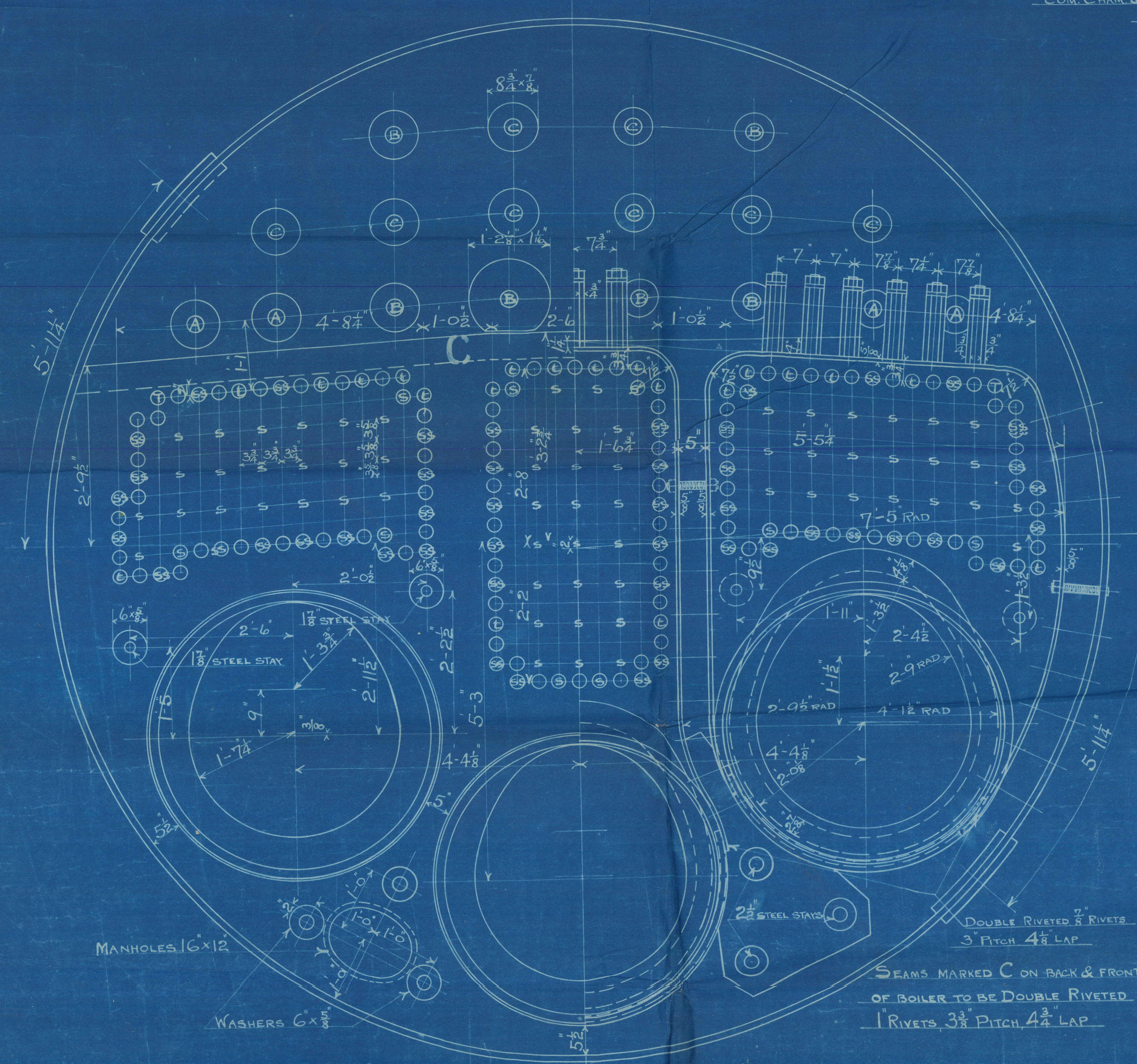
STEAM CAPACITY 504 gph

TO PASS LLOYDS SURVEY

W. DOWD & SONS LTD.

ENGINEERING

SHIPBULDER & ENGINEERS



CONTRACT 552

S/S "TILTHORN"

DOXFORD'S

552 BLA²

FOR 554 VESSEL
Main Boilers

3 S.E.
180 W.P.

No. 3759
LLOYD'S TEST
360 lbs.
W.P. 180 lbs.
G.A.H. 4.4.21

Centre
136²

No. 3762
LLOYD'S TEST
360 lbs.
W.P. 180 lbs.
G.A.H. 11.5.21

Port
136²

No. 3763
LLOYD'S TEST
360 lbs.
W.P. 180 lbs.
G.A.H. 18.4.21

Starboard
136²

S/S "Tilthorn"

SUNDERLAND RPT. NO. 28144

Lloyd's Register
W1334-0030