

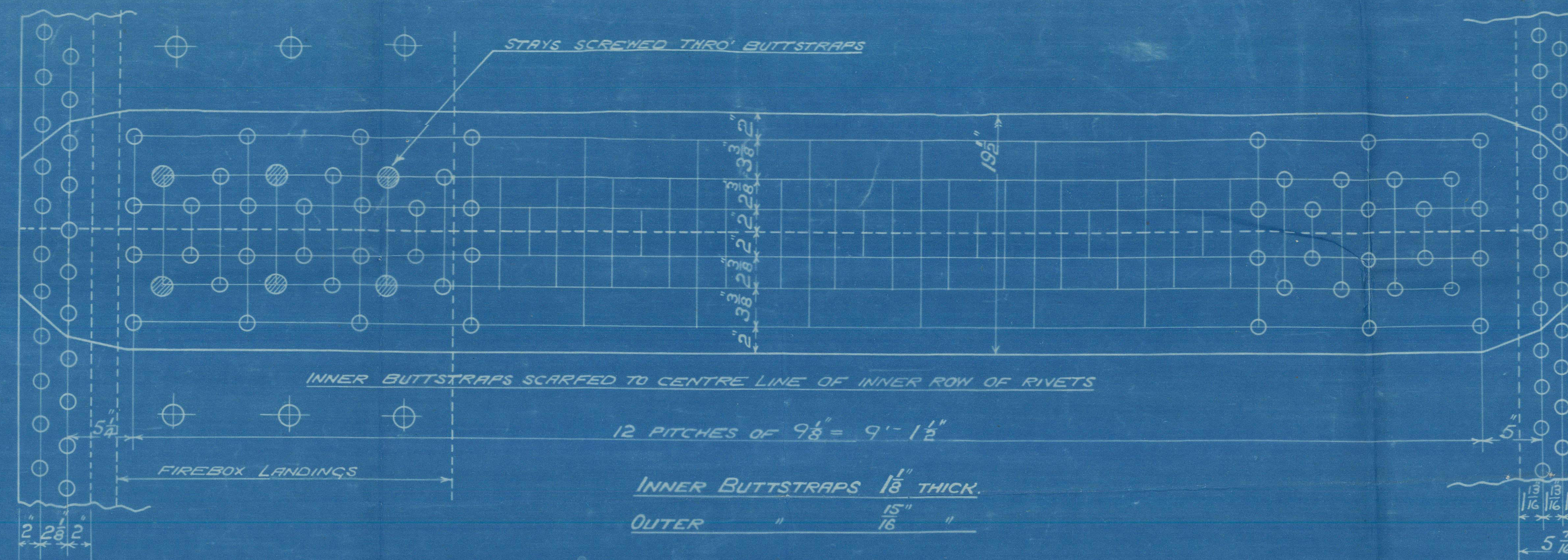
SURFACES	ONE BOILER	3 BOILERS
TUBES	2100	6300
FIREBOX TOP & SIDES	158	472
BACK	82	246
TUBEPLATE	55	165
FURNACES	161	483
TOTAL HEATING SURFACE	2556	7668
GRATE AREA (5" x 6" BARS)	63.3	190
TUBE AREA	11.65	34.95
WATER	160	480
STEAM SPACE	514	1542
GRATE AREA HEATING SURFACE	1:40.2	
TUBE	1:39.2	
WATER	5.43:1	
STEAM SPACE	1:2.52	
% BOILER ABOVE FIREBOX	92.2	
WEIGHT OF WATER	26 TONS	79 TONS

- RIVETING -			
	LONG	BACK END	FRONT END
RIVET HOLE DIA	1 1/8"	1 1/8"	1 1/8"
PITCH	9" 1/25"	9" 5/4"	3" 1/9"
% PLATE	85.6	63	63.3
% RIVET	88.3	51.9	46.5

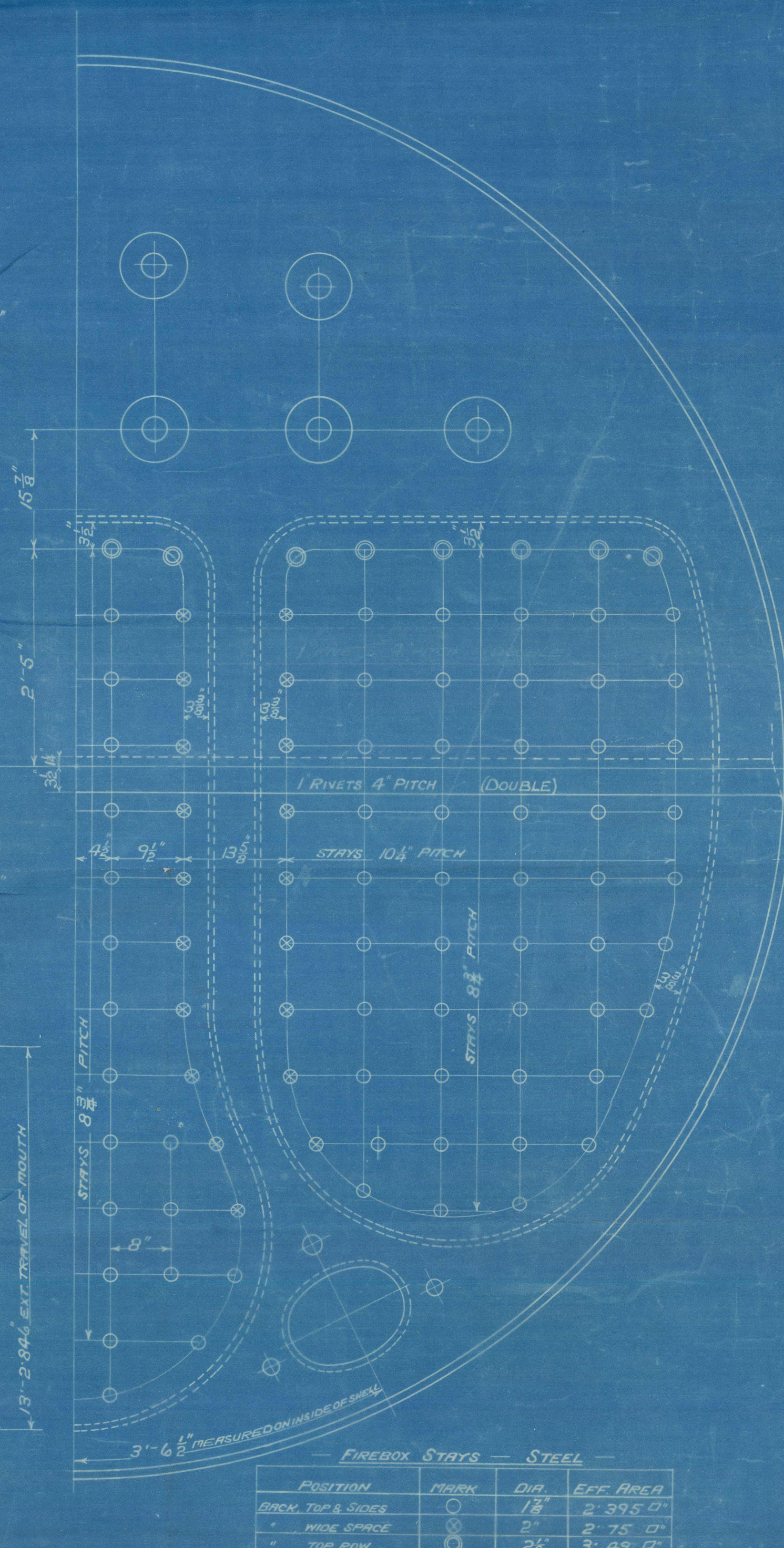
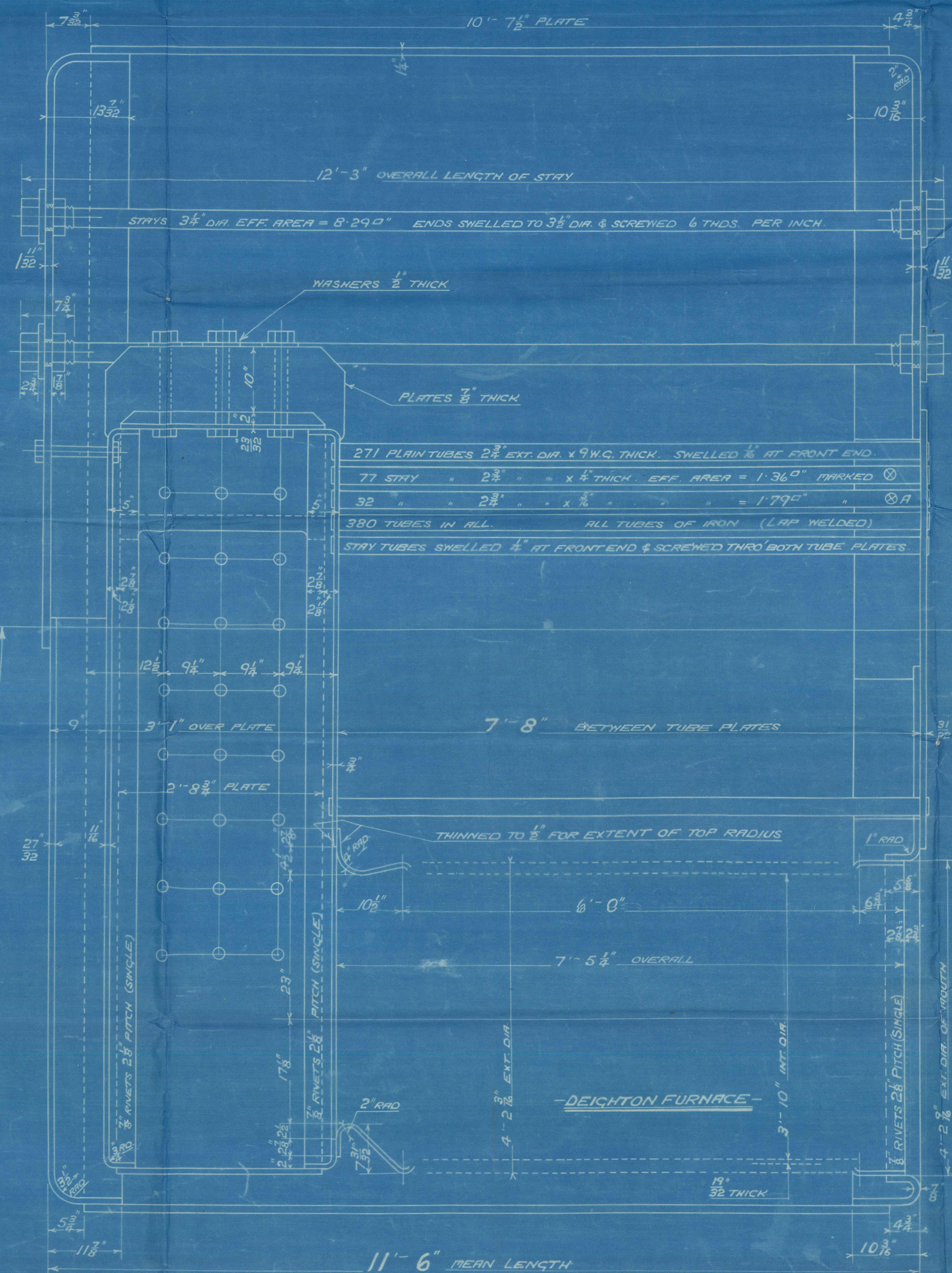
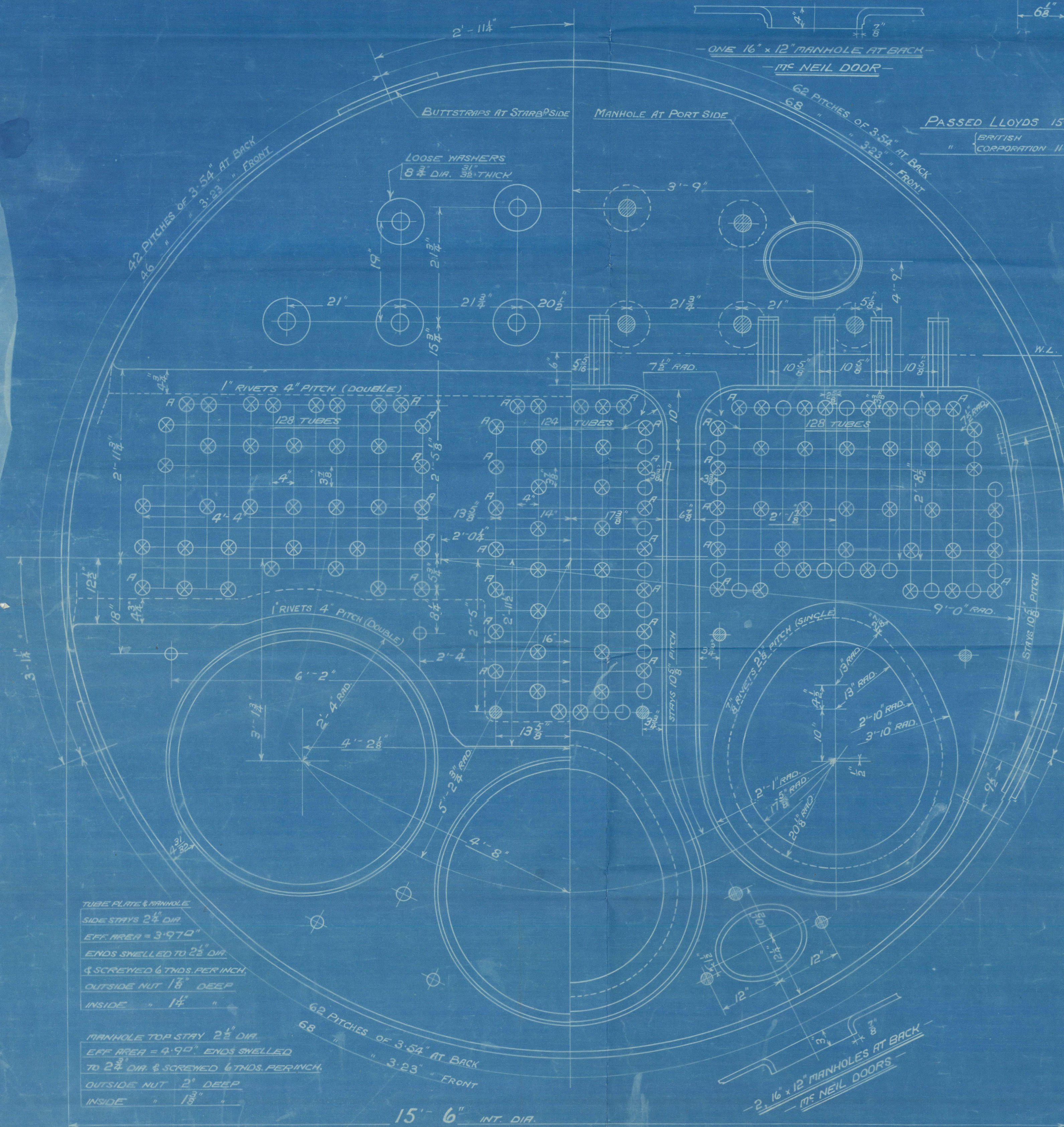
LIMITS OF TENSILE STRENGTH & MATERIAL			
SHELL, BUTTSTRAPS & GIRDERS	28 TO 32 TONS		
OTHER PLATES	26	30	
FURNACES	26	30	
RAIN STAYS	28	32	
SCREWED STAYS	26	30	
RIVET BARS	26	30	

ALL RIVET HOLES DRILLED IN PLACE
RAIN STAYS SWELLED AT ENDS BY
HYDRAULIC PRESSURE AND ANNEALED

BACK END CIRC⁴
165 PITCHES OF 3.54"



FRONT END CIRC⁴
182 PITCHES OF 3.23"



FIREBOX STAYS - STEEL			
POSITION	MARK	DIA	EFF AREA
BACK TOP & SIDES	O	1 1/2"	2.375 sq in
" WIDE SPACE	O	2"	2.75 sq in
" TOP ROW	O	2 1/2"	3.27 sq in

ALL FIREBOX STAYS SCREWED THRO' BOTH PLATES & NUT FITTED AT EACH END, EXCEPT STAYS FROM WING FIREBOX TO SHELL WHICH PROJECT 3/8" & ARE CHILLED. ALL 1 1/2" NUTS 1 1/2" DEEP EXCEPT ON GIRDER TOPS WHERE THE OUTSIDE NUTS ARE 1 3/8" DEEP. ALL 2" & 2 1/2" NUTS 1 1/2" DEEP.

MAIN BOILER (SECOND SERIES) - 3 OFF - (THIRD DESIGN)

- CONT⁷ N^o 710 -

WORKING PRESSURE = 180 LB

TO PASS LLOYDS SURVEILLANCE

SCALES 1" & 1 1/2" = ONE FOOT

DAVID ROWAN & CO'S
REFERENCE

O.T. 23500

TRACED 7th MARCH 1917

W 133

© 2021

Lloyd's Register Foundation

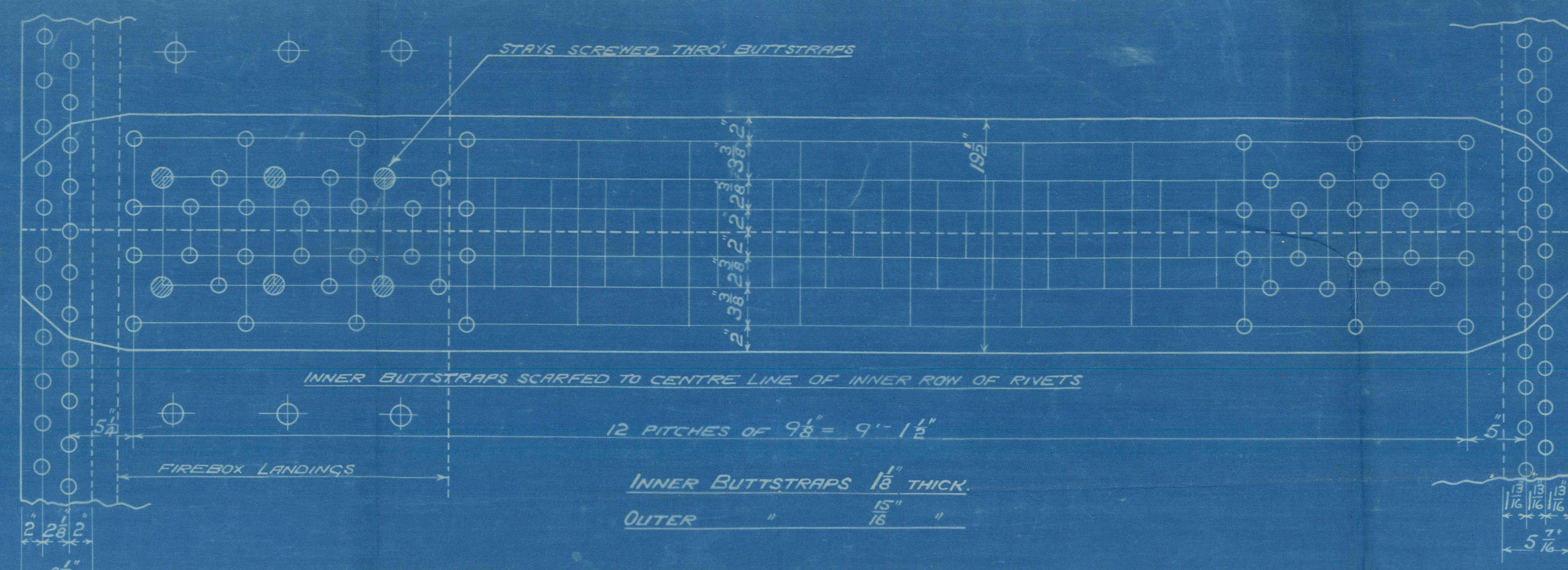
SURFACES	ONE BOILER	3 BOILERS
TUBES	2100 #	6300 #
FIREBOX TOP & SIDES	15.8	47.4
BACK	82	246
TUBE PLATE	55	165
FURNACES	161	483
TOTAL HEATING SURFACE	2556 #	7668 #
GRATE AREA (5" 6" BARS)	63.3 #	190 #
TUBE AREA	11.65	34.95
WATER	160	480
STEAM SPACE	51.2	154.2
GRATE AREA : HEATING SURFACE	1 : 40.1	
WATER	1 : 33.2	
STEAM SPACE	1 : 2.52	
% BOILER ABOVE FIREBOX	1 : 5.1	
WEIGHT OF WATER	32.2	
	26 TONS	79 TONS

RIVETING	LONG	BACK END CIRC	FRONT END CIRC
RIVET HOLE DIA	1 5/8"	1 5/8"	1 3/4"
PITCH	9.125	3.54	3.19
1/2 PLATE	85.6	63	63.3
1/2 RIVET	88.3	51.9	46.5

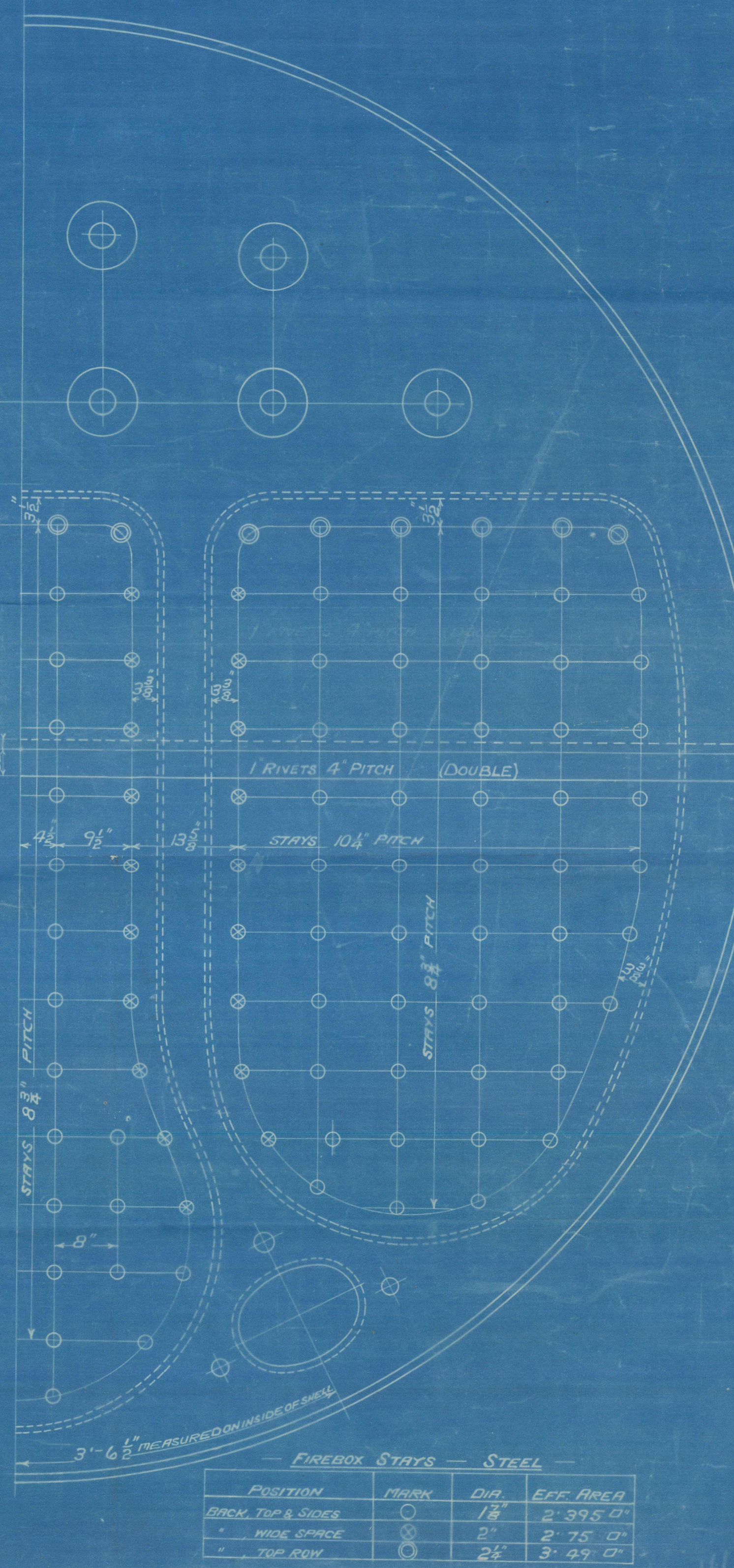
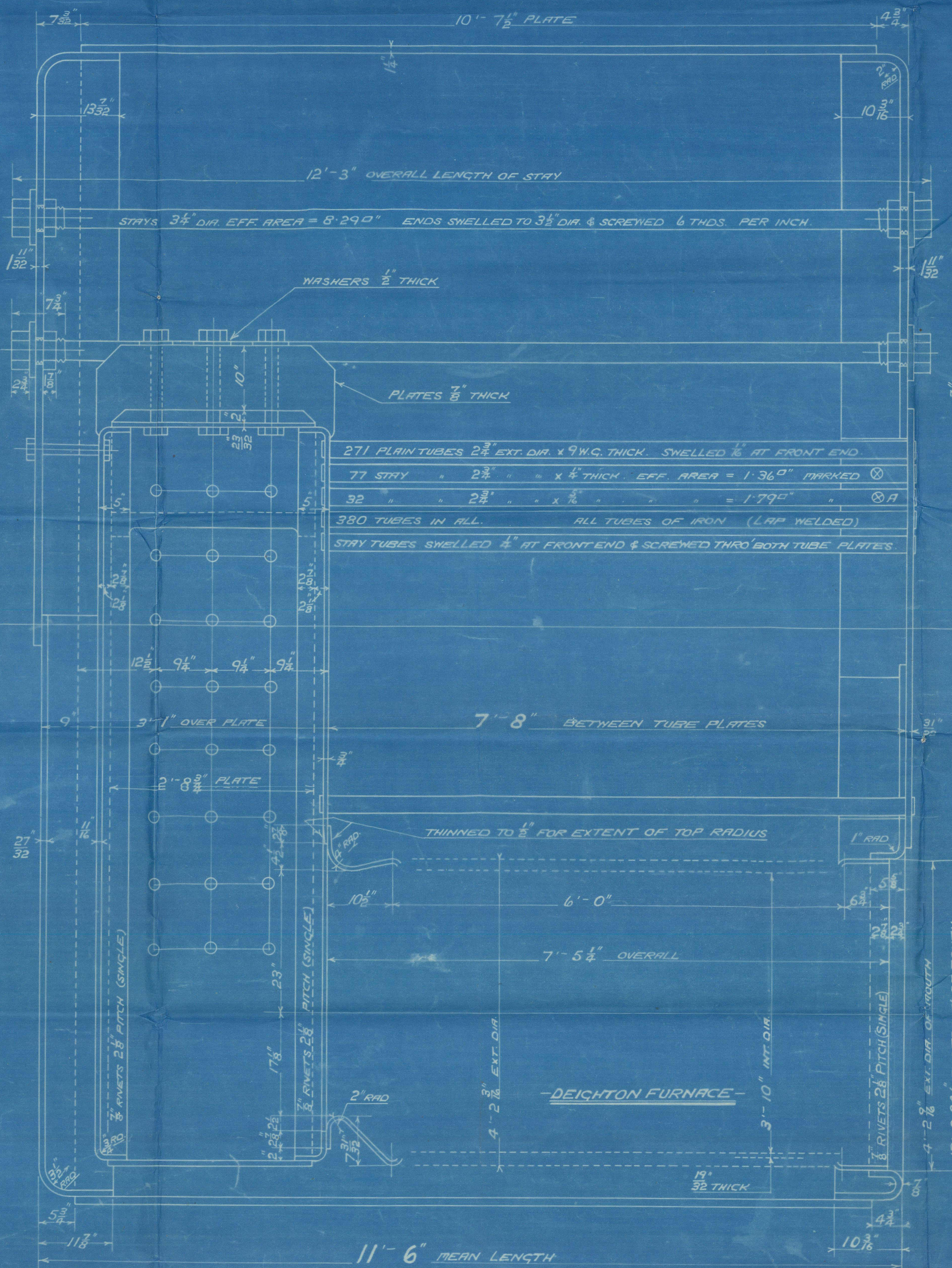
LIMITS OF TENSILE STRENGTH & MATERIAL	28 TO 32 TONS
SHELL, BUTTSTRAPS & GIRDERS	26 x 30
OTHER PLATES	26 x 30
FURNACES	26 x 30
MAIN STAYS	28 x 32
SCREWED STAYS	26 x 30
RIVET BARS	26 x 30

ALL RIVET HOLES DRILLED IN PLACE
MAIN STAYS SHELLED AT ENDS BY
HYDRAULIC PRESSURE AND ANNEALED

BACK END CIRC
186 PITCHES OF 3.54"

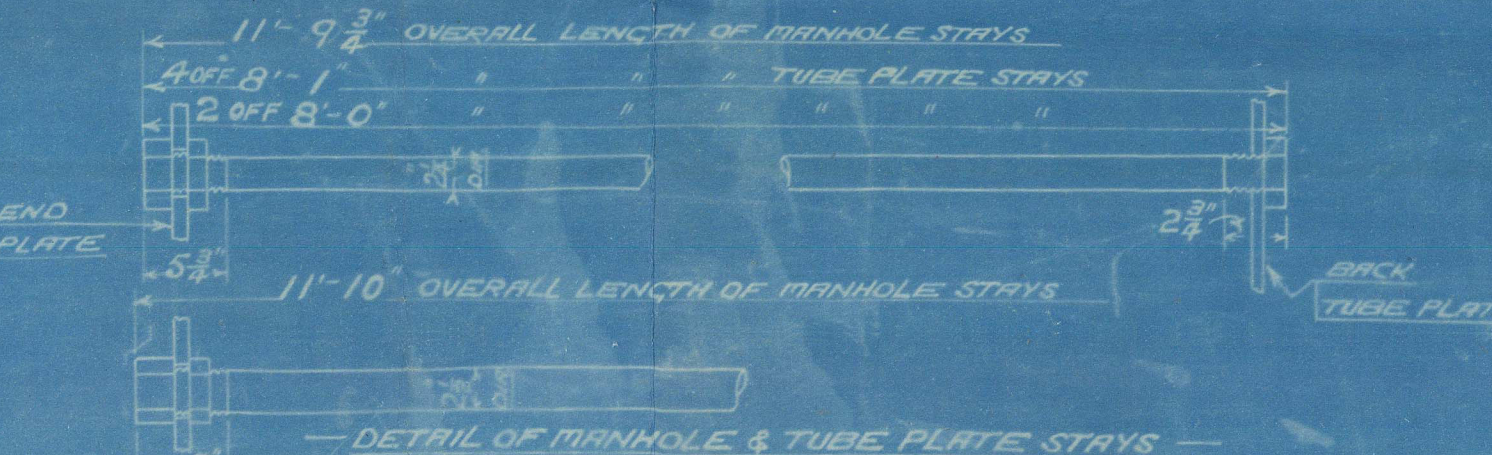


FRONT END CIRC
186 PITCHES OF 3.23"



TUBE PLATE & MANHOLE
SIDE STAYS 2 1/2" DIA
EFF AREA = 3.97 sq
ENDS SHELLED TO 2 1/2" DIA
& SCREWED 6 TNS PER INCH
OUTSIDE NUT 1 1/2" DEEP
INSIDE 1 1/2"

MANHOLE TOP STAY 2 1/2" DIA
EFF AREA = 4.97 sq
ENDS SHELLED
TO 2 1/2" DIA & SCREWED 6 TNS PER INCH
OUTSIDE NUT 2" DEEP
INSIDE 1 1/2"



MAIN BOILER (SECOND SERIES)
- 3 OFF - (THIRD DESIGN)

- CONT NO 710 -

WORKING PRESSURE = 180 LBS PER SQ INCH
TO PASS LLOYDS SURVEY
SCALES 1" & 1 1/2" = ONE FOOT

From DAVID ROWAN & CO., GLASGOW.
3 ENCLOSURE S.
For Messrs.
Boyd & Reginald
1101 2

ALL FIREBOX STAYS SCREWED THRO' BOTH PLATES & NUT FITTED AT EACH END
EXCEPT STAYS FROM WING FIREBOX TO SHELL WHICH PROJECT 8" & ARE CHALKED.
ALL 1 1/2" NUTS 1 1/2" DEEP EXCEPT ON GIRDER TOPS WHERE THE OUTSIDE NUTS ARE 1 1/2" DEEP.
ALL 2" & 2 1/2" NUTS 1 1/2" DEEP

POSITION	MARK	DIA	EFF AREA
BACK TOP & SIDES	○	1 1/8"	2.395 sq
WING SPACE	○	2"	2.75 sq
TUBE ROW	○	2 1/2"	3.49 sq

DAVID ROWAN & CO'S
REFERENCE
O.T. 23500
TRACED 7th MARCH 1917

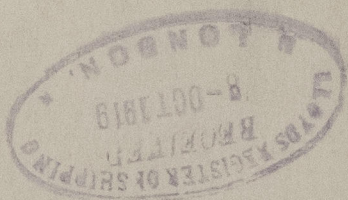
D. Rowan & Co

Main Books 710
Supplement of 1694-705
Standard Binds.

710 YARGAEKWAR

Gls Rpt-ko
-

GLASGOW REPORT No. 39198



© 2021

Lloyd's Register
Foundation

W1333-0101 1/2