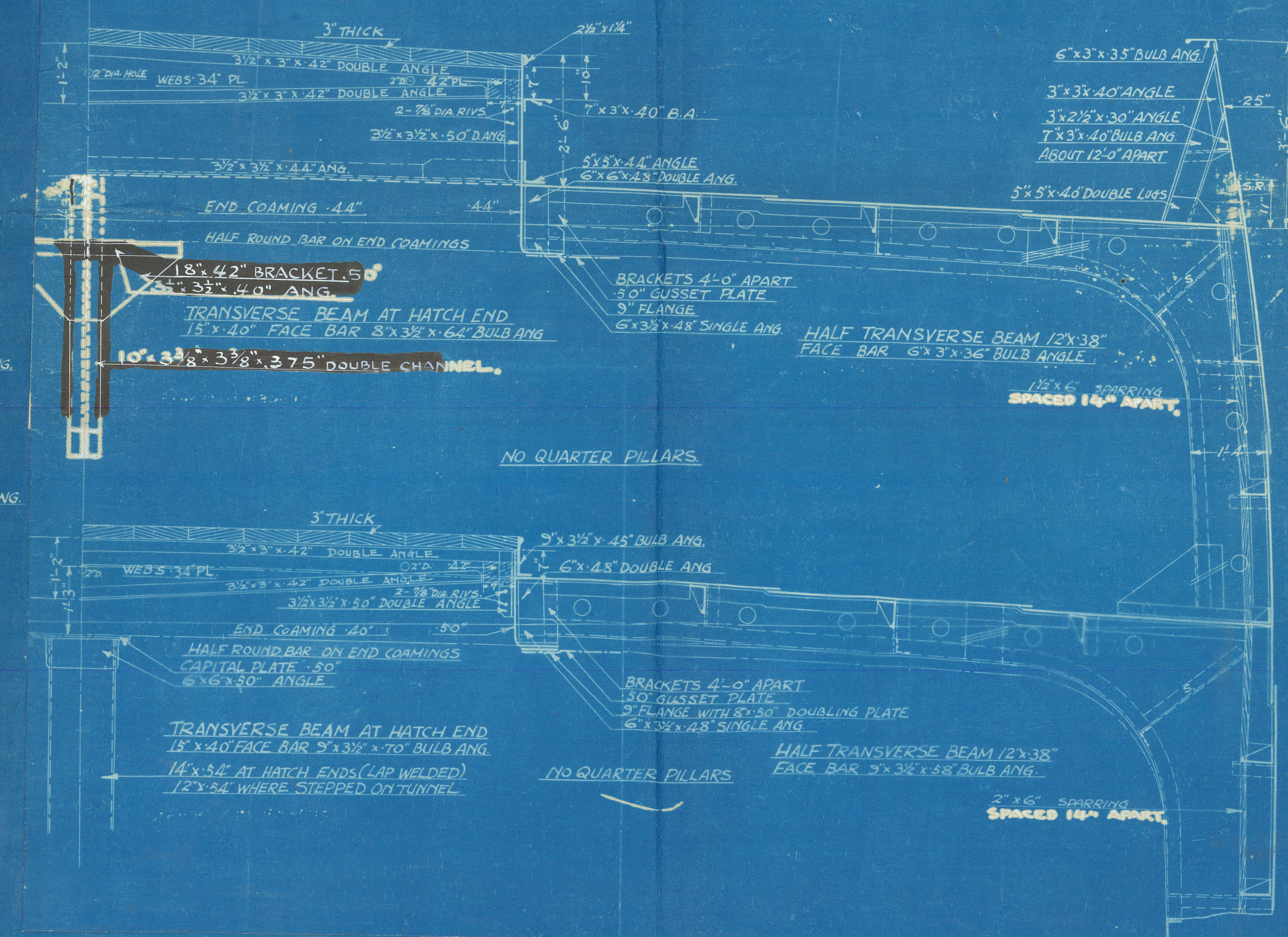


SCALE 1/2 IN. TO ONE FT.

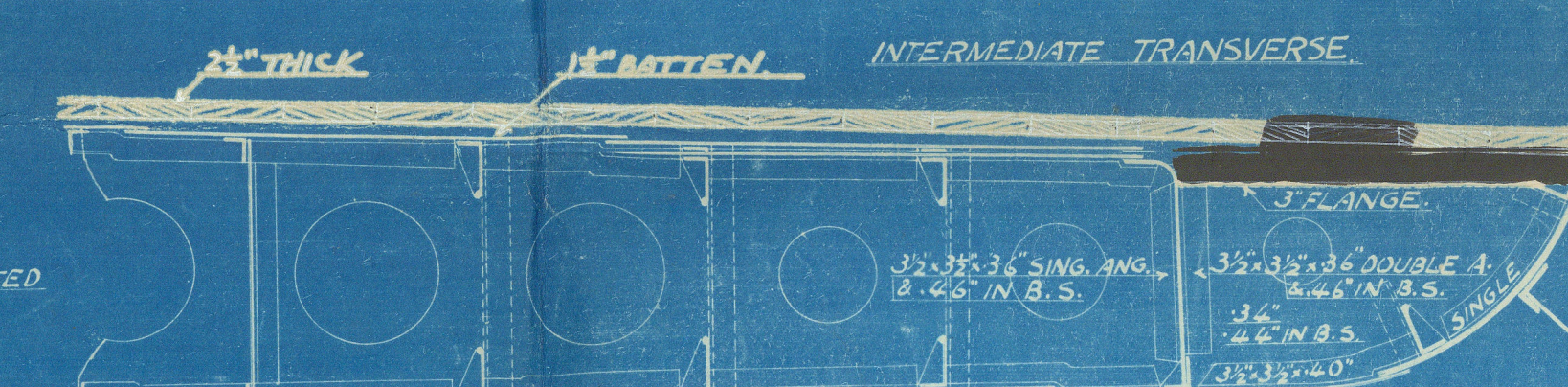
(B+D) x L.	(23.75 x 27.25) x 30.5 = 21655.00
POOP	$\frac{3}{4}$ x 81.79 x 7.00 = 38.65
BRIDGE	$\frac{3}{4}$ x 82.00 x 7.00 = 430.50
FORECASTLE	$\frac{3}{4}$ x 32.21 x 7.25 = 175.14
CASING AND ENGINEER'S CABIN	$\frac{1}{2}$ x 60.00 x 7.07 = 176.75
OFFICERS' CABIN	$\frac{1}{2}$ x 22.00 x 7.21 = 79.31
EQUIPMENT NUMBER	22 655.35

LENGTH BET. P.P.	305'-0"
BREADTH M.L.D.	43'-9"
DEPTH M.L.D.	27'-3"

BREADTH 43.75
DEPTH 27.25
71.00 1ST NUMBER
LENGTH 305.00
21655.00 2ND NUMBER
40 TO UPPER DECK 11.20
40 TO BRIDGE DECK 8.90



BRIDGE SIDE PLATING TREBLE RIVETED.
SHELL BUTTS OVERLAPPED " TREBLE RIVETED FOR 1/2 LENGTH TO DOUBLE AT ENDS.
KEEL " " " QUADRUPLE " " 75 " " TREBLE " "
UPPER DECK SHEER STRAKE BUTTS QUADRUPLE OVER LAPS IN WELLS TREBLE
IN BRIDGE TO DOUBLE AT ENDS.
POOD SIDE PLATING BUTTS DOUBLE RIVETED
FCLT " " " " "
POOD STRINGER " " " " "
BRIDGE " " " TREBLE " "
FCLT " " " DOUBLE " "
POOD DECK PLATING BUTTS SINGLE RIVETED.
BRIDGE " " " DOUBLE " "
UPPER DECK STRINGER BUTTS QUADRUPLE AT THICK JETS AT BRIDGE ENDS.
TREBLE IN BRIDGE & WELLS TO DOUBLE AT ENDS.
UPPER DECK PLATING BUTTS DOUBLE TO SINGLE.
2ND DECK STRINGER BUTTS " " " " "
" " PLATING " " " " "
CENTRE GARDER BUTTS TREBLE FOR 1/2 LENGTH TO DOUBLE AT ENDS.
WAGON PLATE BUTTS DOUBLE OVER LAP OVER LAPS FORE & AFT
TRUNK TOP MIDDLE LINE STRAKE TREBLE FOR 1/2 L. TO DOUBLE AT ENDS.
TANK TOP REMAINDER BUTTS DOUBLE FOR 1/2 L. TO SINGLE AT ENDS.



OF THIS SIZE WHERE SUPPORTED
BY INTERMEDIATE BRACKET.

S.S. "SEIKAI MARU"

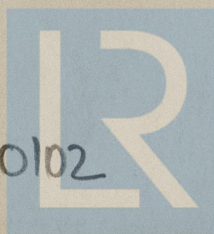
O.I.W. No 981

MIDSHIP SECTION

Kobe 3051.



W1331- 0102



© 2021

Lloyd's Register
Foundation