

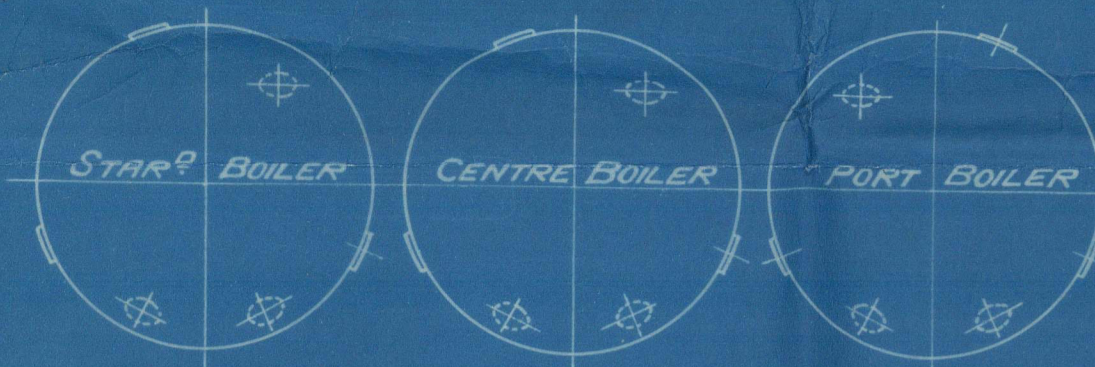
SURFACES	ONE BOILER	3 BOILERS	AS PER N.E. PAVING ENG. COS. GUIDANCE. FRONT ONE BOILER
TUBES	1545 #	4535 #	1545 #
FIREBOX TOP AND SIDES	146 "	438 "	
" BACK	70 "	210 "	
" TUBE PLATE	50 "	150 "	
FURNACES	137 "	411 "	
TOTAL HEATING SURFACE	1948 #	5844 #	1975 #
GRATE AREA (5'3" BARS)	50.8 "	152.4 "	51.7 "
TUBE AREA	11.5 "	34.5 "	
WATER "	137.5 "	412.5 "	
STEAM SPACE	350.6 "	1050.6 "	
GRATE AREA: HEATING SURFACE	1 : 38.3		
" " TUBE	1 : 30.4		
" " AREA	1 : 2.71		
" " WATER	1 : 6.88		
" " STEAM SPACE	29.5		
WEIGHT OF WATER	22 TONS	66 TONS	

RIVETING	LONG		END
	LONG	CIRC	CIRC
RIVET HOLE DIA.	1 1/8 "	1 1/8 "	1 1/8 "
PITCH	8.5 "	3.5 "	3.5 "
% PLATE	86	66	
% RIVET	86.1	47.5	

ALL RIVET HOLES DRILLED IN PLACE.  
MAIN STAYS SWELLED AT ENDS BY  
HYDRAULIC PRESSURE AND ANNEALED.

#### LIMITS OF TENSILE STRENGTH AND MATERIAL

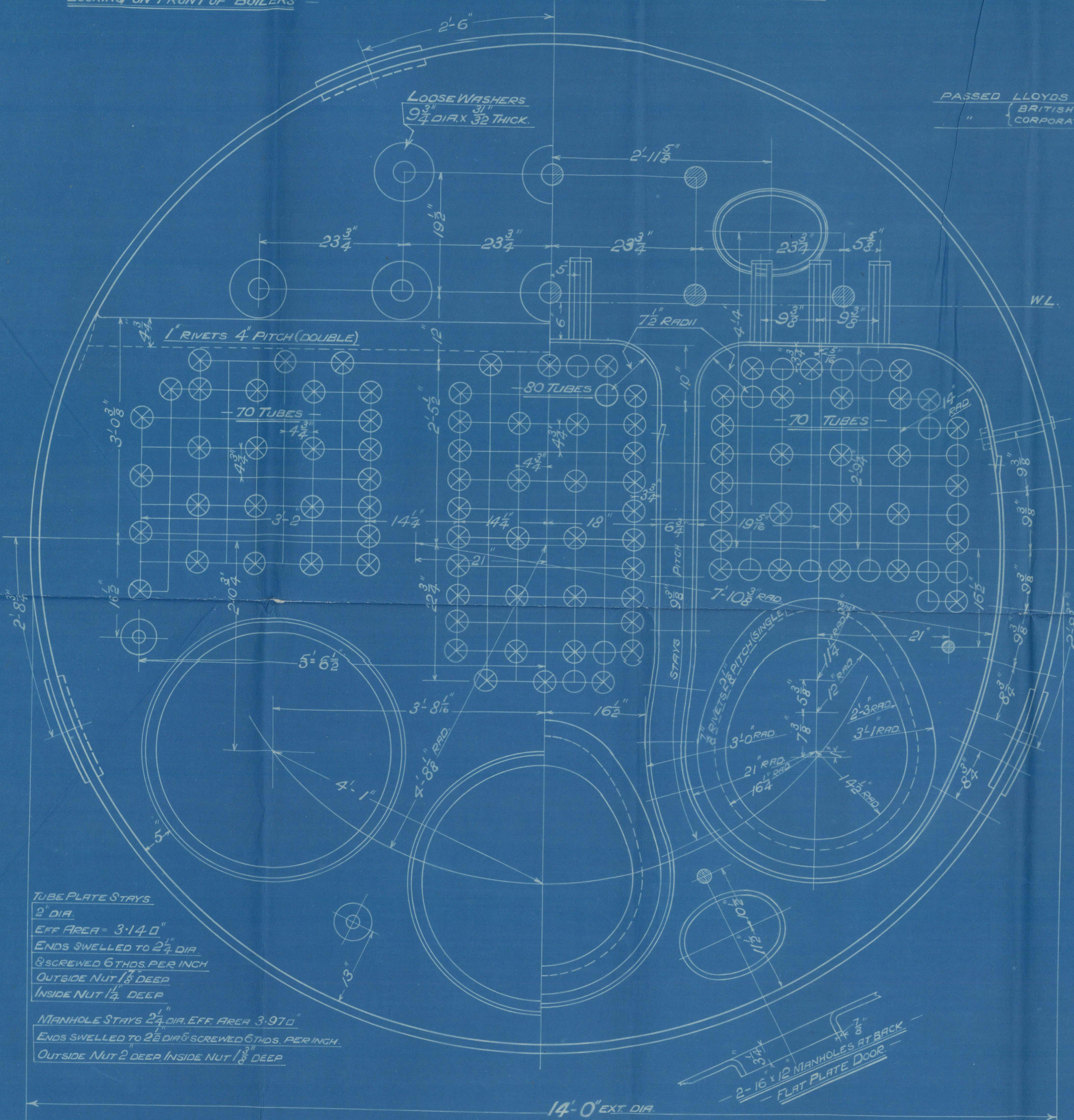
SHELL & BUTTSTRAPS	288 TO 33 TONS	SIEMENS MARTIN STEEL
GIRDERS	28 " 32 "	
OTHER PLATES	26 " 30 "	
FURNACES	26 " 30 "	
MAIN STAYS	28 1/2 " 33 "	
SCREWED STAYS	26 " 30 "	
RIVET BARS	26 " 30 "	



ARRANGEMENT OF MANHOLES & SHELL BUTTSTRAPS  
LOOKING ON FRONT OF BOILERS

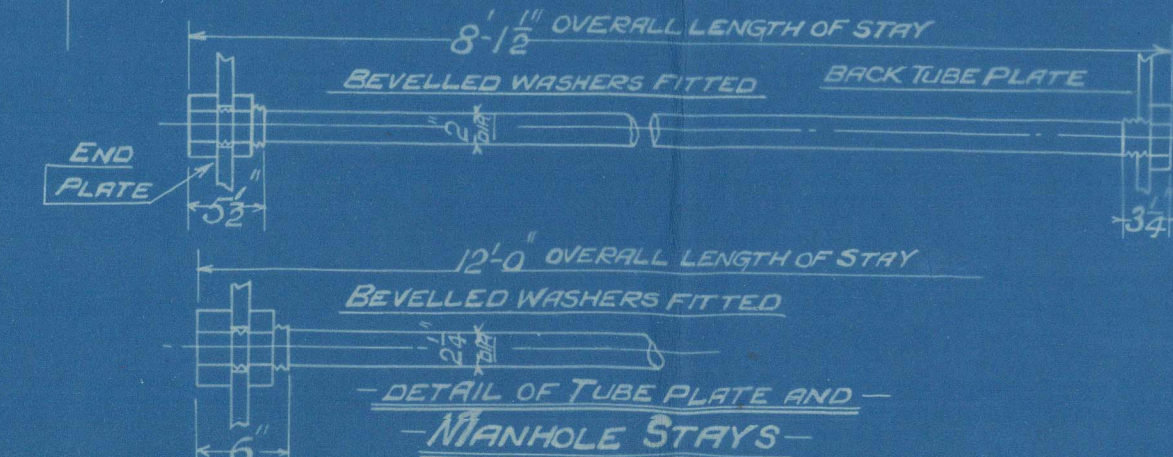


ONE 16 x 12 MANHOLE AT BACK  
FLAT PLATE DOOR



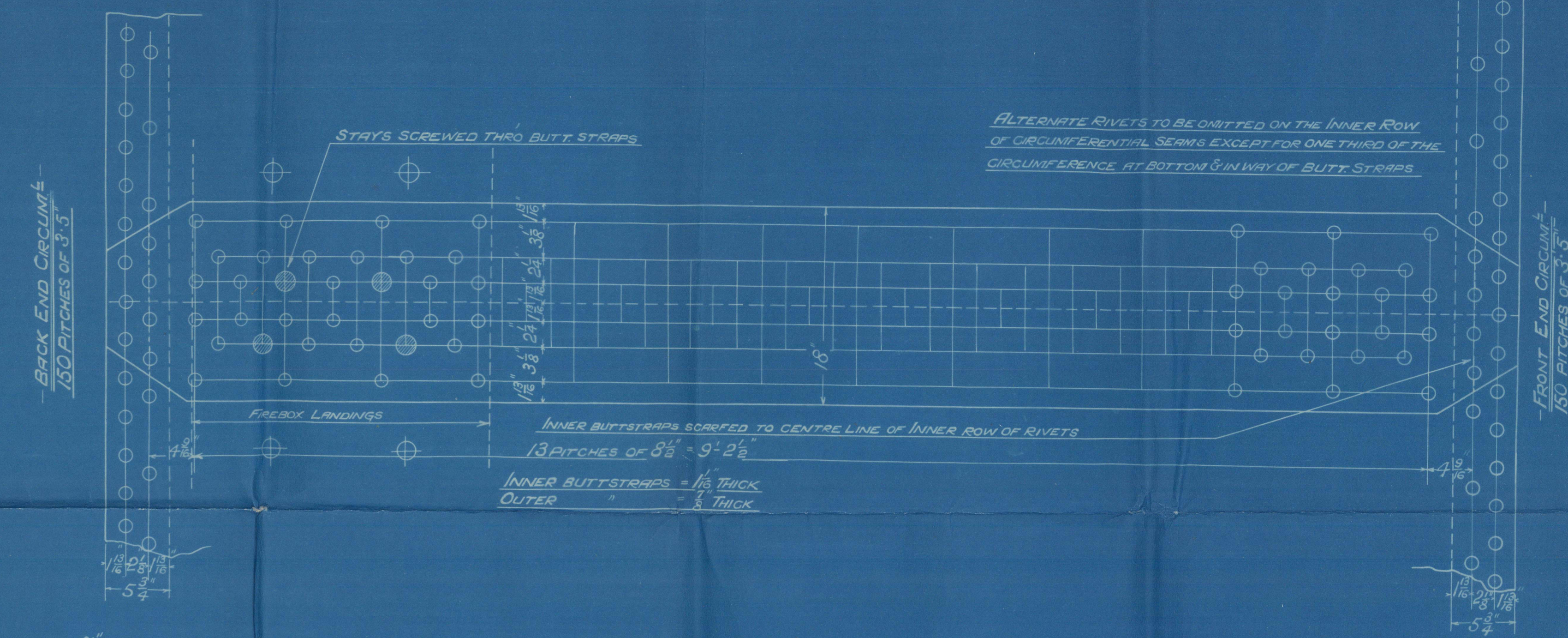
TUBE PLATE STAYS  
2" DIA.  
EFF AREA = 3.14 sq.  
ENDS SWELLED TO 2 1/2" DIA.  
SCREWED 6 THDS PER INCH  
OUTSIDE NUT 1 1/2" DEEP  
INSIDE NUT 1 1/2" DEEP

MANHOLE STAYS 2 1/2" DIA. EFF AREA 3.97 sq.  
ENDS SWELLED TO 2 1/2" DIA. SCREWED 6 THDS PER INCH.  
OUTSIDE NUT 2" DEEP INSIDE NUT 1 1/2" DEEP



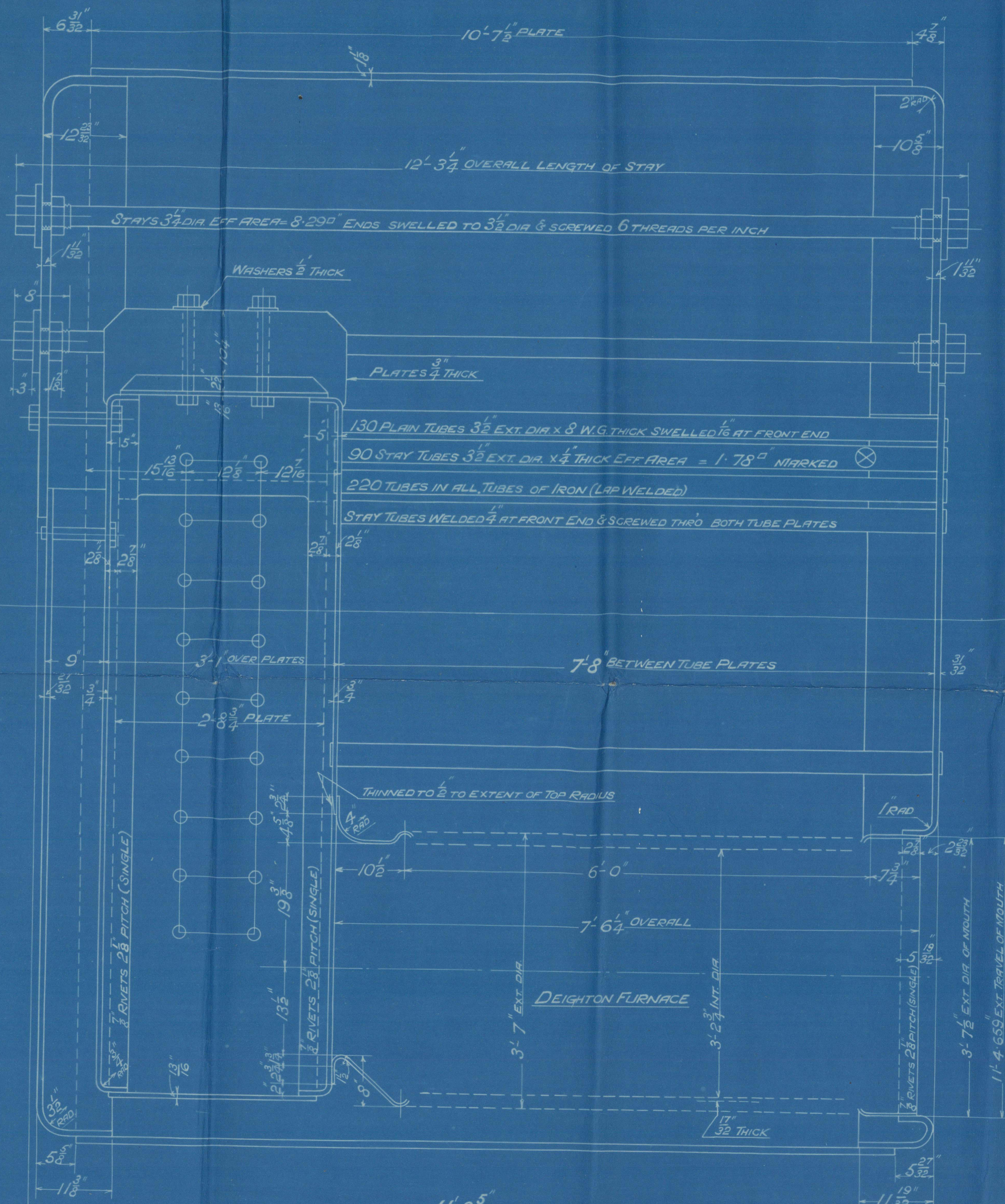
MAIN BOILER

CONT. NO.	SURVEY
729	LLOYDS
730	"
731	"



BACK END CIRCUMFERENCE  
150 PITCHES OF 3" 5"

FRONT END CIRCUMFERENCE  
150 PITCHES OF 3" 5"



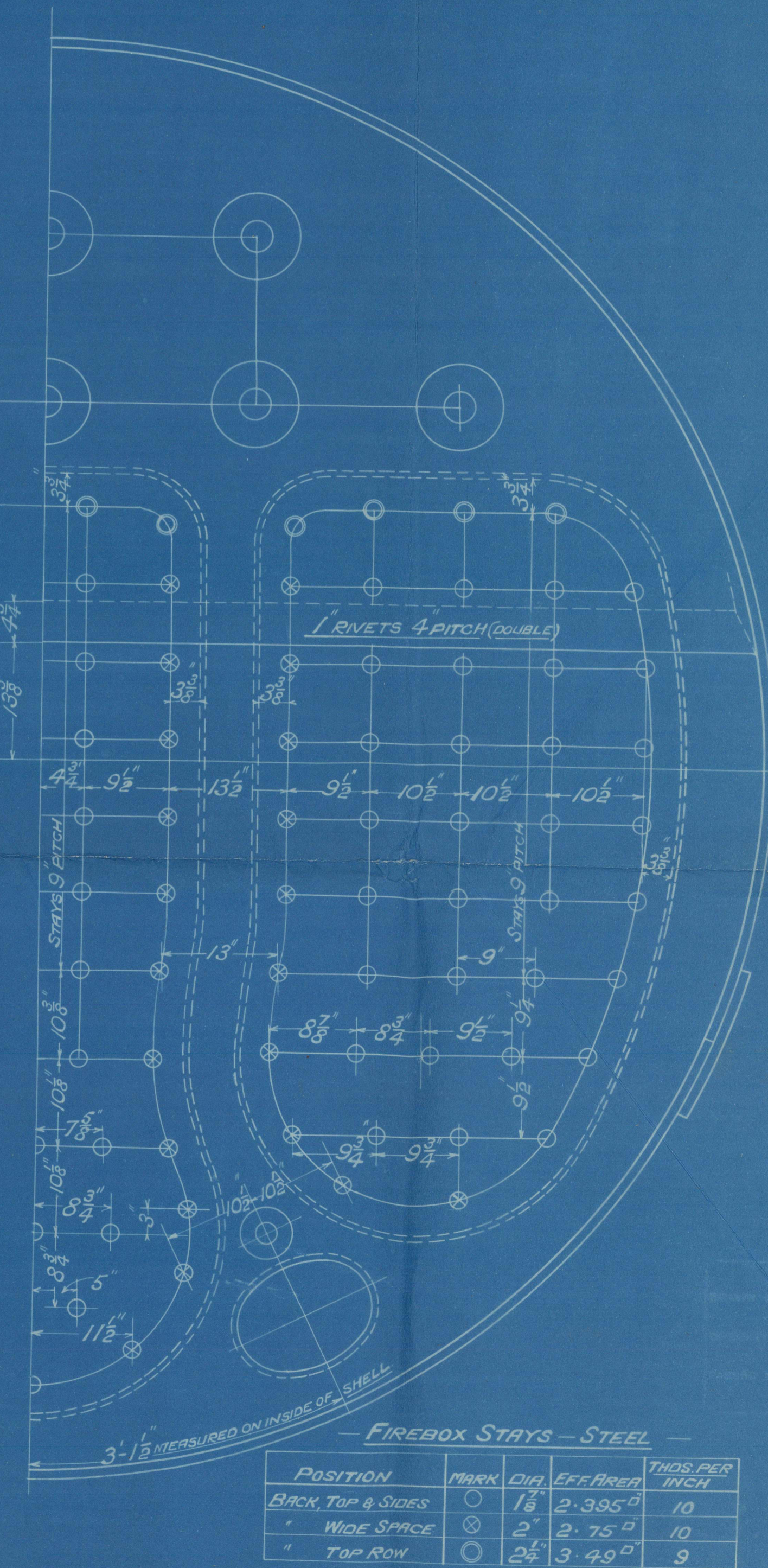
11'-8 1/2" TOTAL LENGTH  
MAIN BOILER  
3 OFF 2 OFF AS DRAWN  
ONE OFF TO OPPOSITE HAND

CONTIN<sup>o</sup> 729 ETC.

WORKING PRESSURE - 180 LBS. PER SQ. INCH

TO PASS LLOYDS SURVEY

SCALES 1" = 1 1/2" = ONE FOOT



FIREBOX STAYS - STEEL

POSITION	MARK	DIA.	EFF. AREA	THDS. PER INCH
BACK, TOP & SIDES	1	1 1/8 "	2.395 sq.	10
" WIDE SPACE	2	2 "	2.75 sq.	10
" TOP ROW	3	2 1/8 "	3.49 sq.	9

ALL FIREBOX TOP & SIDE STAYS SCREWED THRO' BOTH PLATES & NUT FITTED AT EACH END, EXCEPT FROM WING FIREBOX TO SHELL WHICH PROJECT 3/8" AND ARE CAULKED.  
ALL MARGINAL STAYS ON BACK OF FIREBOX TO HAVE NUT FITTED AT EACH END, REMAINDER TO HAVE NUT ON INNER END ONLY & TO PROJECT 3/8" ON OUTSIDE AND BE CAULKED.  
ALL 1 1/8" NUTS, 1 1/2" DEEP, EXCEPT ON GIRDER TOPS, WHERE THE OUTSIDE NUTS ARE 1 1/2" DEEP.  
ALL 2" & 2 1/8" NUTS 1 1/2" DEEP.

O.T. 26/58  
TR. NO. 50055  
TRACED AUGUST 1918

4810-0331M

2786-2C  
229

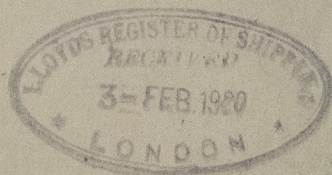
Glasgow  
to Rowan Co. La  
from Berlin  
e Ly Pe  
Standard Vessels

nos 729. 730. 731

approved 10/9/18

no 730 S.S. ALGERIER

Glasgow 39589.



W1330-0184



© 2021  
Lloyd's Register  
Foundation