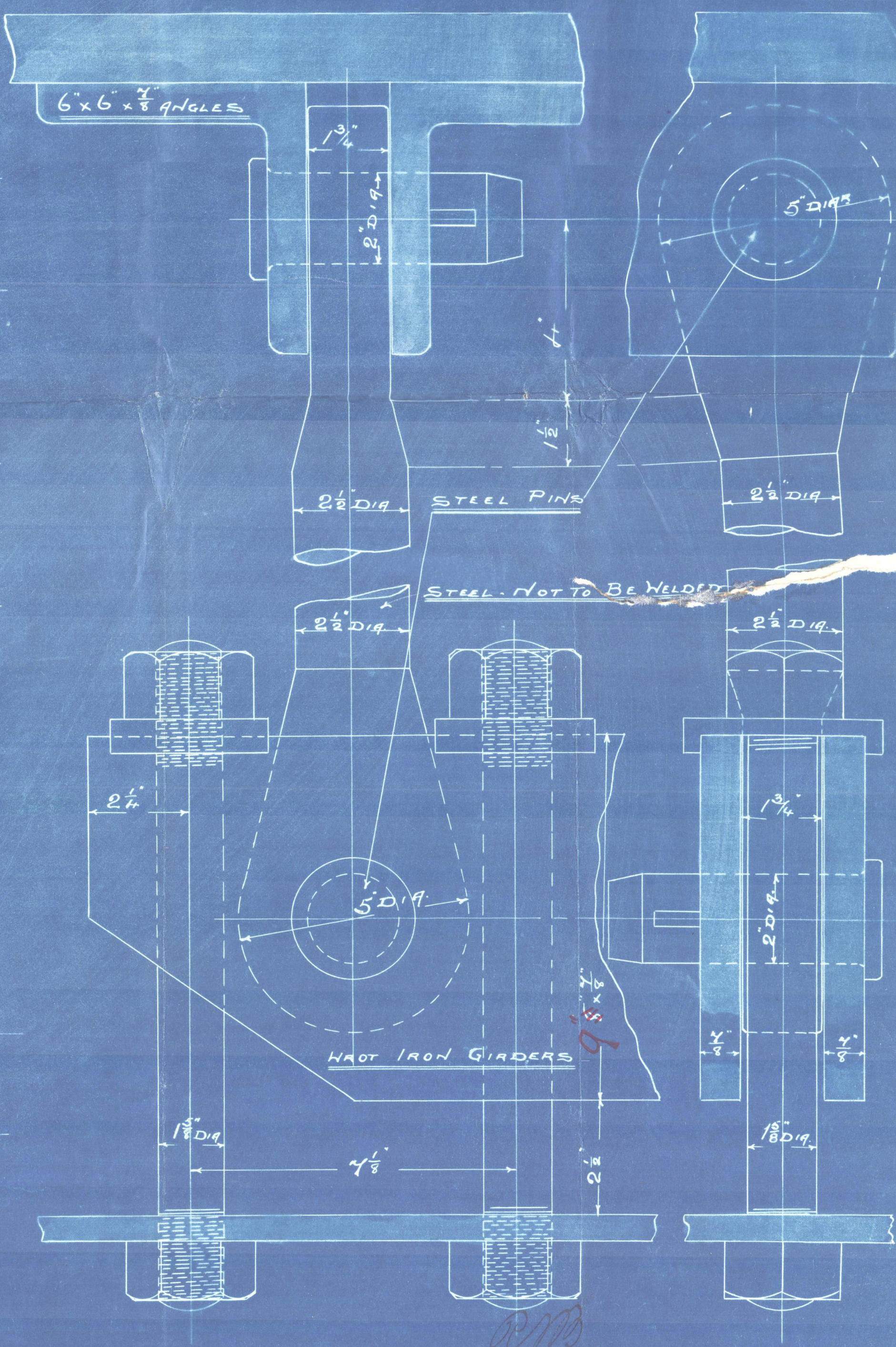
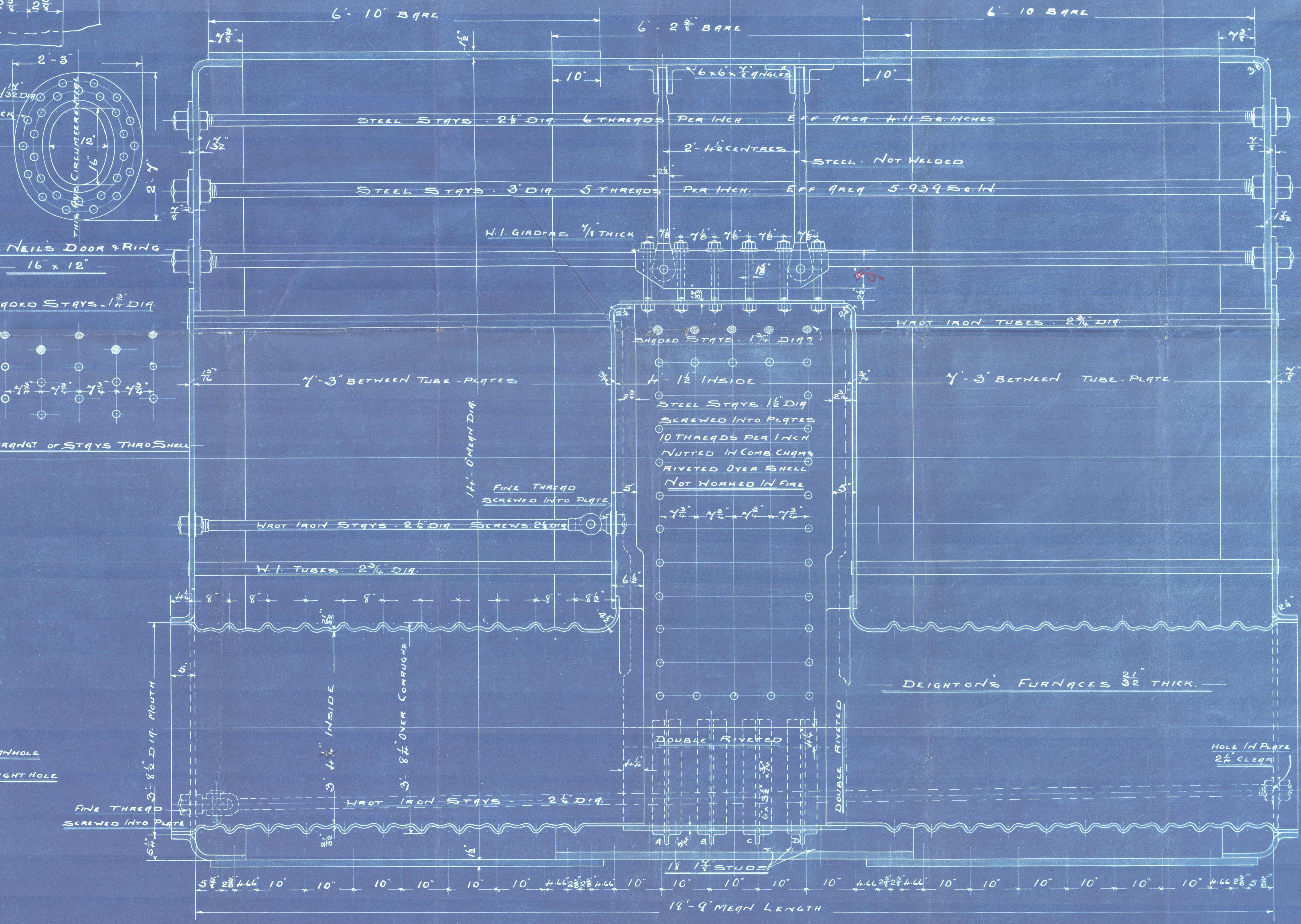
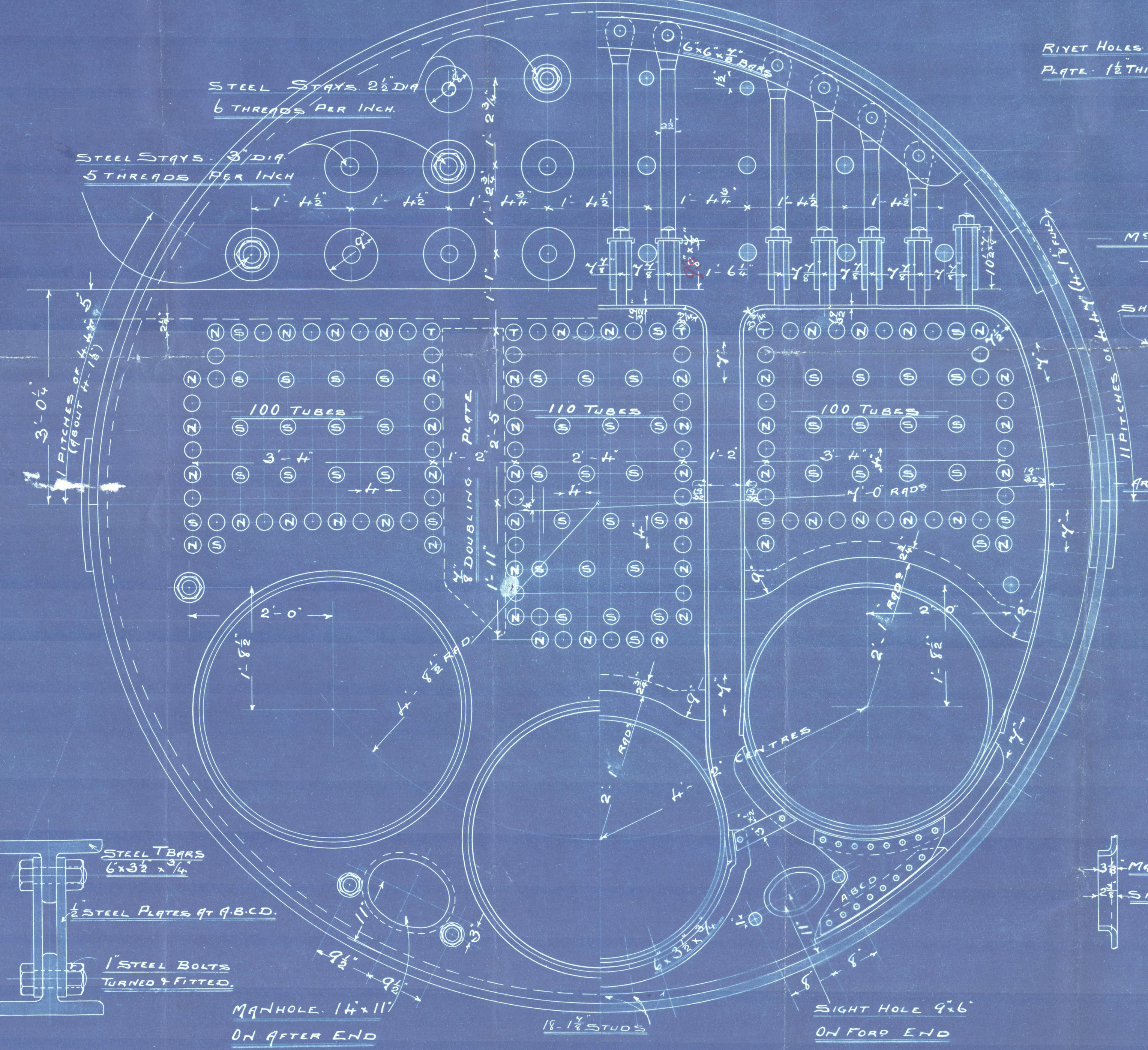
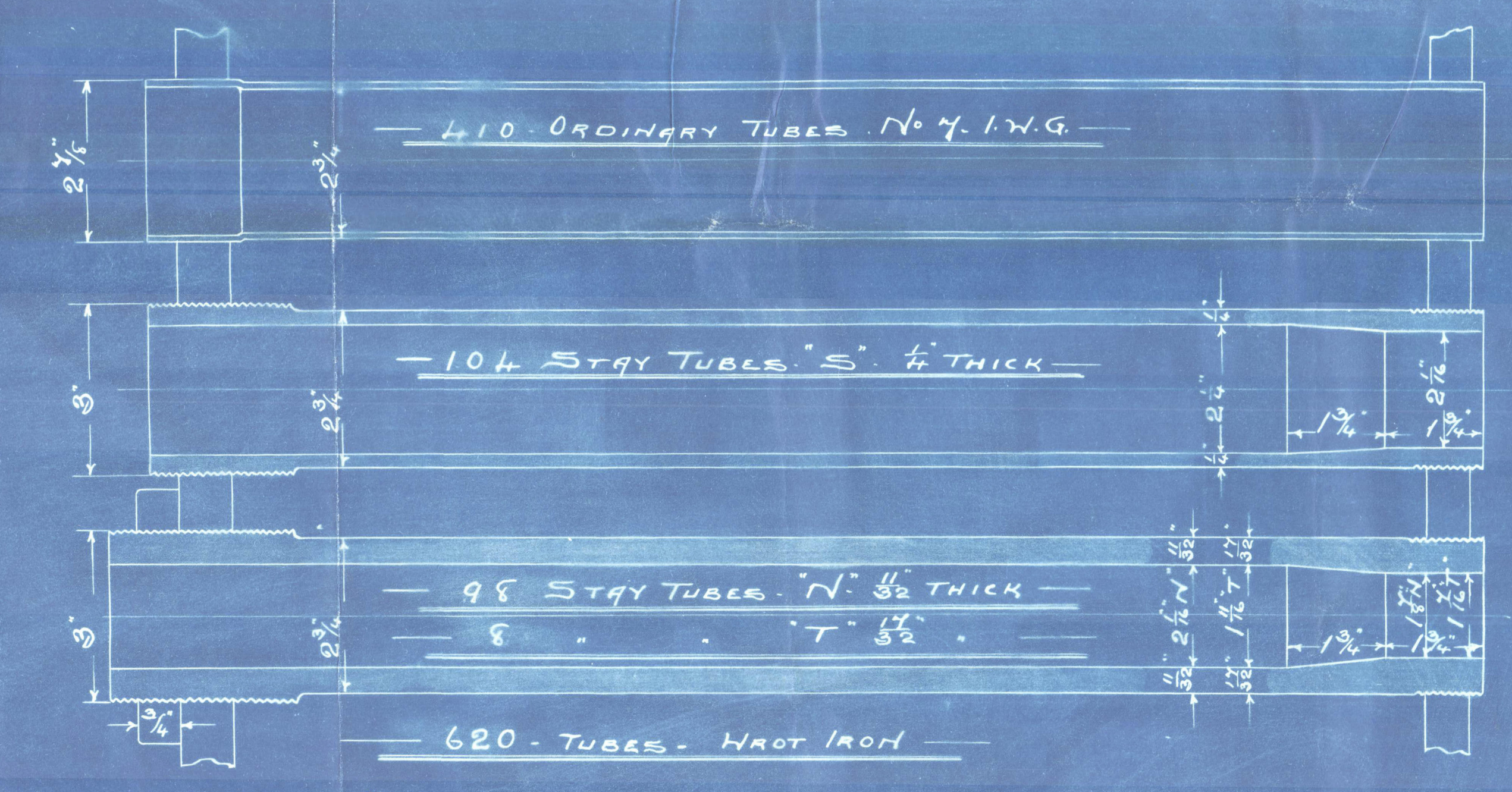


HEATING SURFACE	SQ. FT.
TUBES	3286
FURNACES	303
COMB. CHAM.	231
FRONT TUBE PLATES	50
TOTAL	3820
GRATE SURFACE	1104

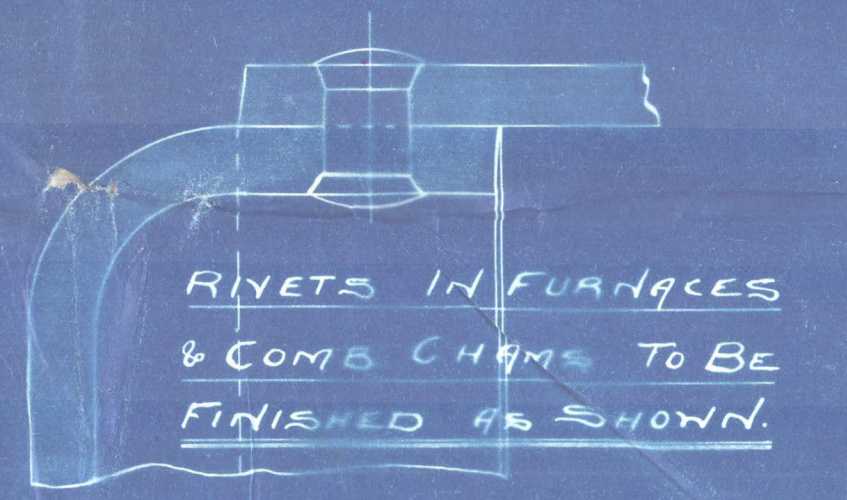
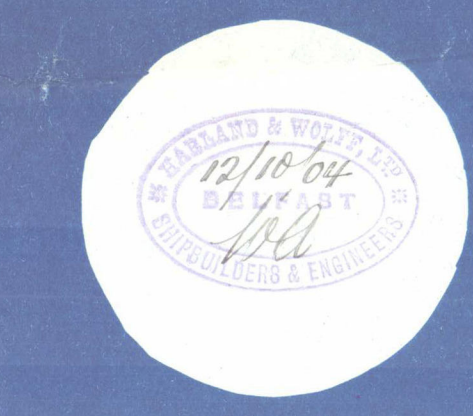


PARTICULARS OF RIVETING

LONGITUDINAL SEAMS - DOUBLE BUTT STRAPS RIVETED AS SHOWN	
STRENGTH OF PLATE 84.6% STRENGTH OF RIVET 85.12%	
CIRCUMFERENTIAL SEAMS - DOUBLE RIVETED AT CENTRE AS SHOWN	
DOUBLE RIVETED ENDS	
END PLATES - LAPPED - DOUBLE RIVETED 1/2\"/>	
DOUBLE RIVETED 3/4\"/>	
SINGLE RIVETED 1/2\"/>	
ALL PLATES & RIVETS STEEL. ALL HOLES DRILLED IN PLACE	
MINIMUM TENSILE STRENGTH OF SHELL PLATES - 29 TONS PER SQ. INCH	
MAXIMUM	32
MINIMUM	28
MAXIMUM	32

WORKING PRESSURE 215 LBS PER SQ. INCH

TEST 430 LBS



2-OFF

MAIN BOILER N° 369

UNDER SURVEY OF BOARD OF TRADE

LLOYDS

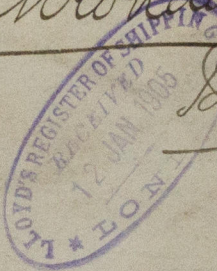
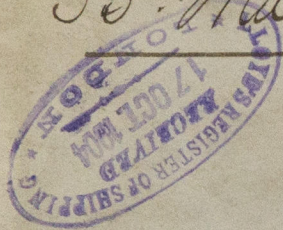
SCALE - 1" = 1'-0"



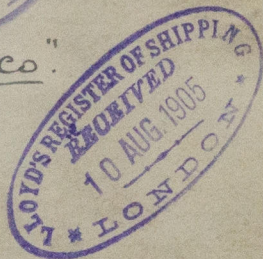
Belfast  
Harland & Wolff L<sup>td</sup>  
T.S.S. 369

Main End Bales  
S.S. Mahrona

Det 5941



N.N. Uniwaleco



W133-0262



© 2020

Lloyd's Register  
Foundation