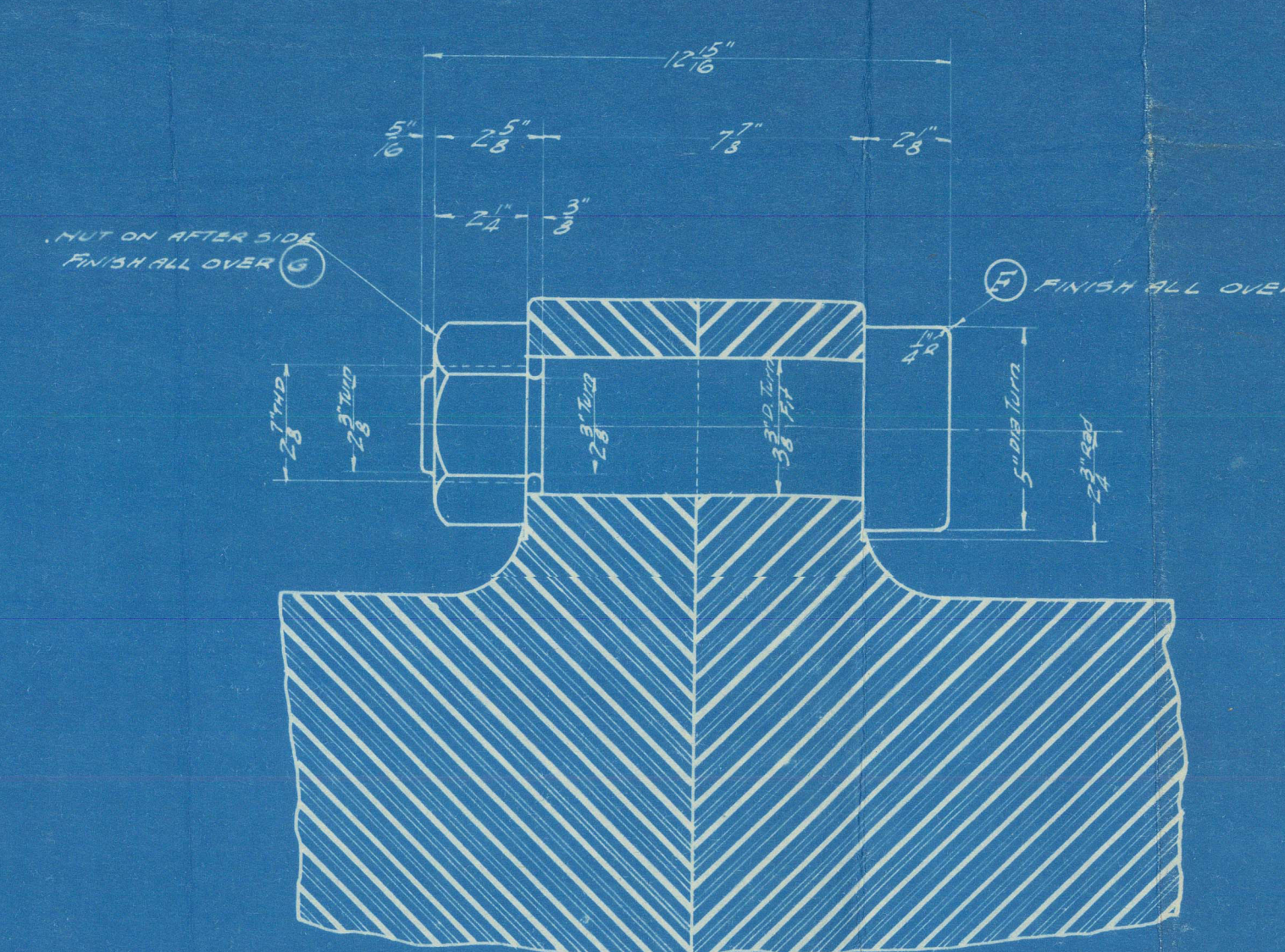
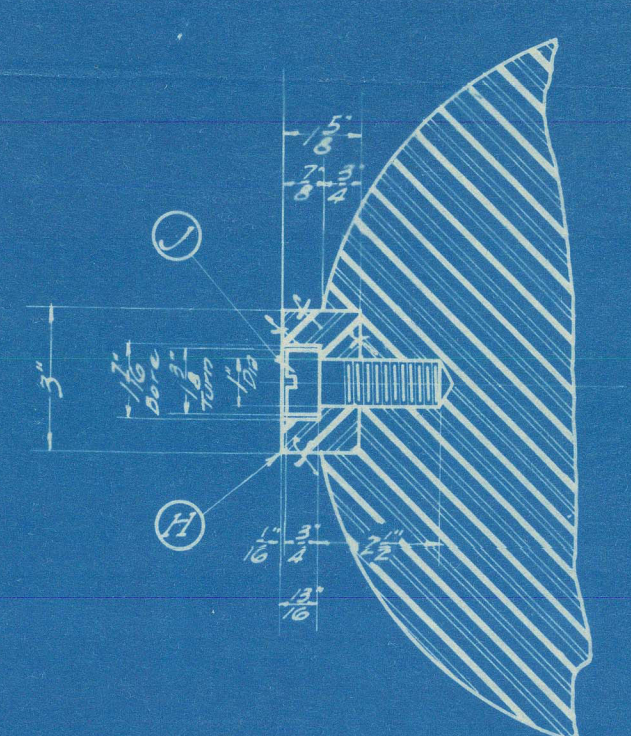


[illegible][illegible]



Trail Shaft

Southwestern S.B. Co's

Hulls 24-25-26

No. 24,  $\frac{1}{2}$ s "Scopas," SF. Apt. 3575

No. 25,  $\frac{1}{2}$ s "Silvanus" " " 3603

No. 26,  $\frac{1}{2}$ s "Semitamis" " " 3726

RECEIVED

RECEIVED



© 2021

Lloyd's Register  
Foundation

W1329 + 0155



Southwestern SB Co

Fort Shopt

Hulls N<sup>o</sup> 24-25 & 26

---

W1329-0155



© 2021

Lloyd's Register  
Foundation