



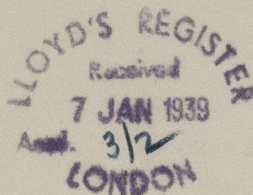
TELEGRAMS: "REGISTER" KOBE
TELEPHONE: 2530 SANNOMIYA

LLOYD'S REGISTER OF SHIPPING

MEIKAI BUILDING

No. 32, AKASHI MACHI,

KOBE, December 19th 1938.-



The Secretary,
LONDON

M/S "TYOZYU MARU" ex "Chojo Maru"
S/S "NEKKA MARU"
S/S "USSURI MARU"

Dear Sir,

I enclose herewith a copy of a letter from the Owners of the above vessels from which you will note that they do not desire to continue their Classification with the Society.

As in the case of previous vessels of this Company, the Classification of which has been withdrawn in recent months, the above three vessels are solely engaged in local trade, and I understand that these are the last of their classed vessels so engaged.

I am, Dear Sir,

Yours faithfully,



© 2021

Lloyd's Register
Foundation

W1329-0051

Referred to the Chief Ship Surveyor,
and the Chief Engineer Surveyor.

Also for Mr. Hill to note

RJL

Yours faithfully

I am, Dear Sir,

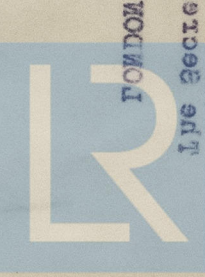
so engaged.

I understand that these are the last of their classed vessels
the above three vessels are solely engaged in local trade, and
the classification of which has been withdrawn in recent months.
As in the case of previous vessels of this company,

desire to continue their classification with the Society.
of the above vessels from which you will note that they do not

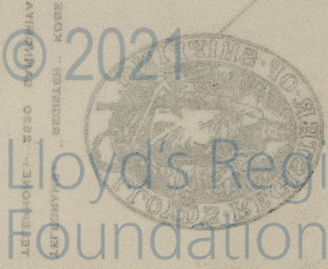
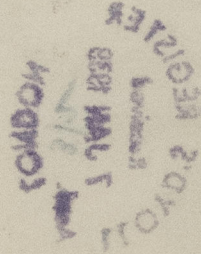
I enclose herewith a copy of a letter from the Owners

Dear Sir,



The Secretary,

"URAM AKKHA" S/S
"URAM AKKHA" S/S
"URAM AKKHA" S/S
"URAM AKKHA" S/S



December 1938

Kobe

No. 35, AKASHI MACHI,

MEIKAI BUILDING

LLOYD'S REGISTER OF SHIPPING