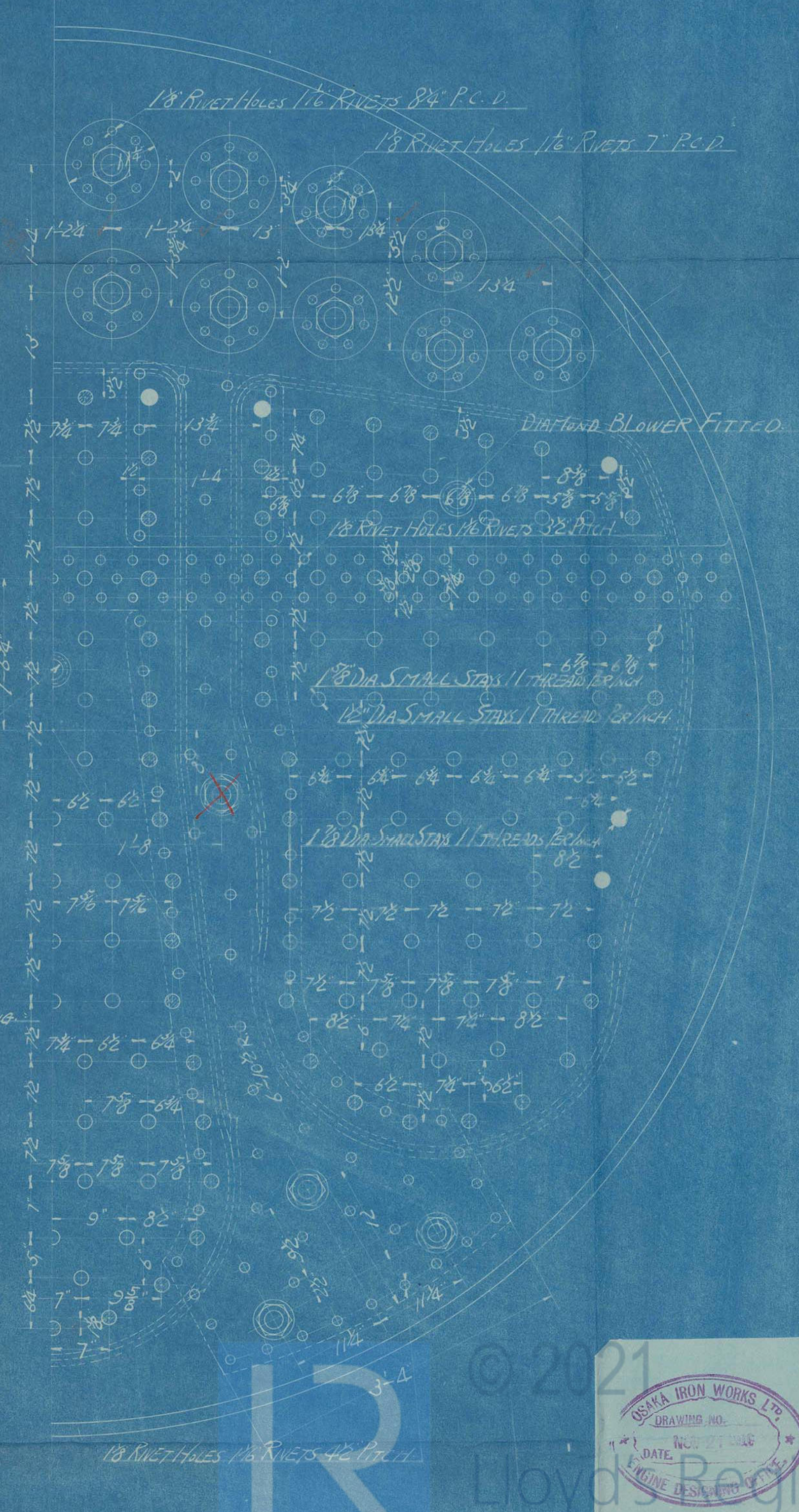
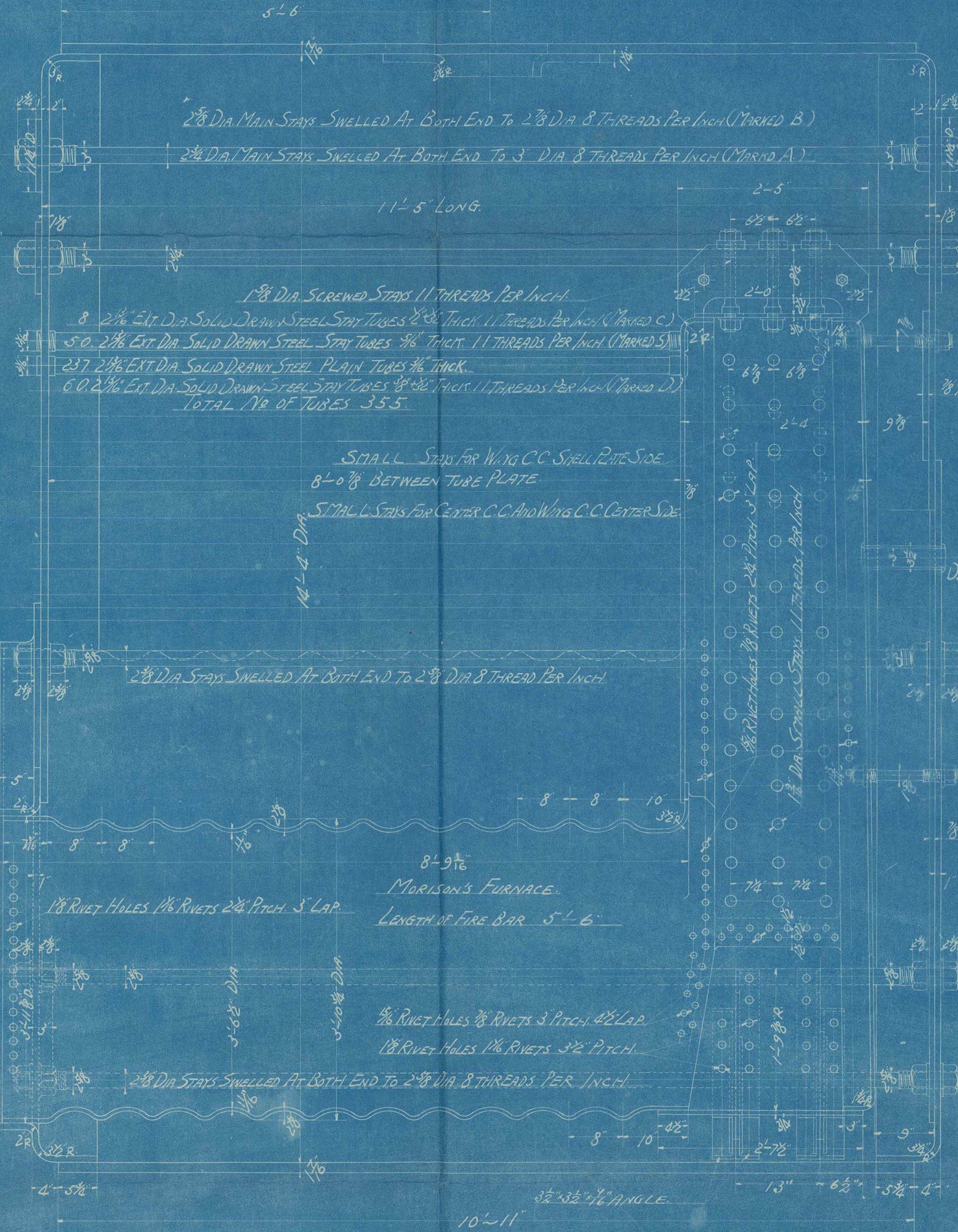
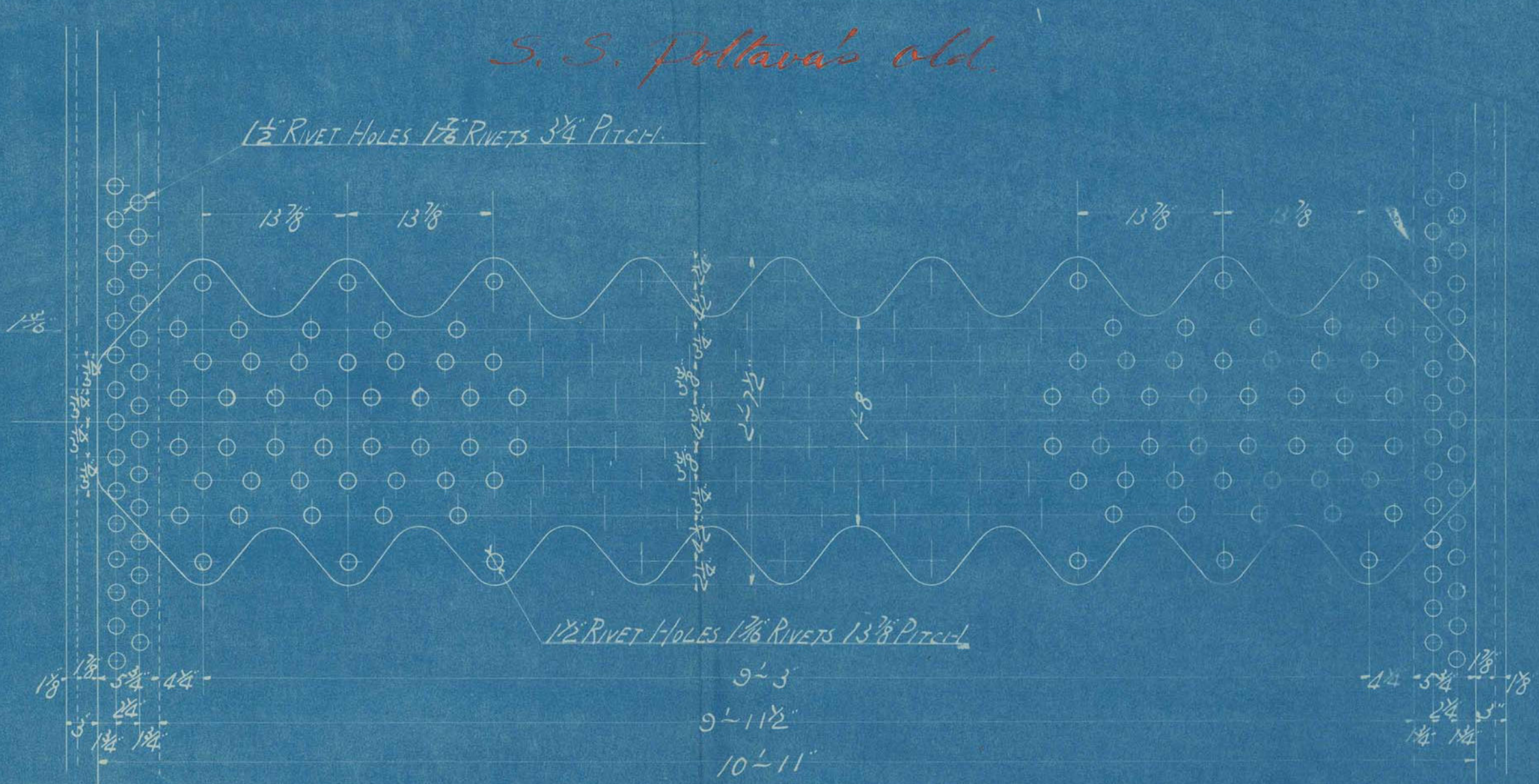
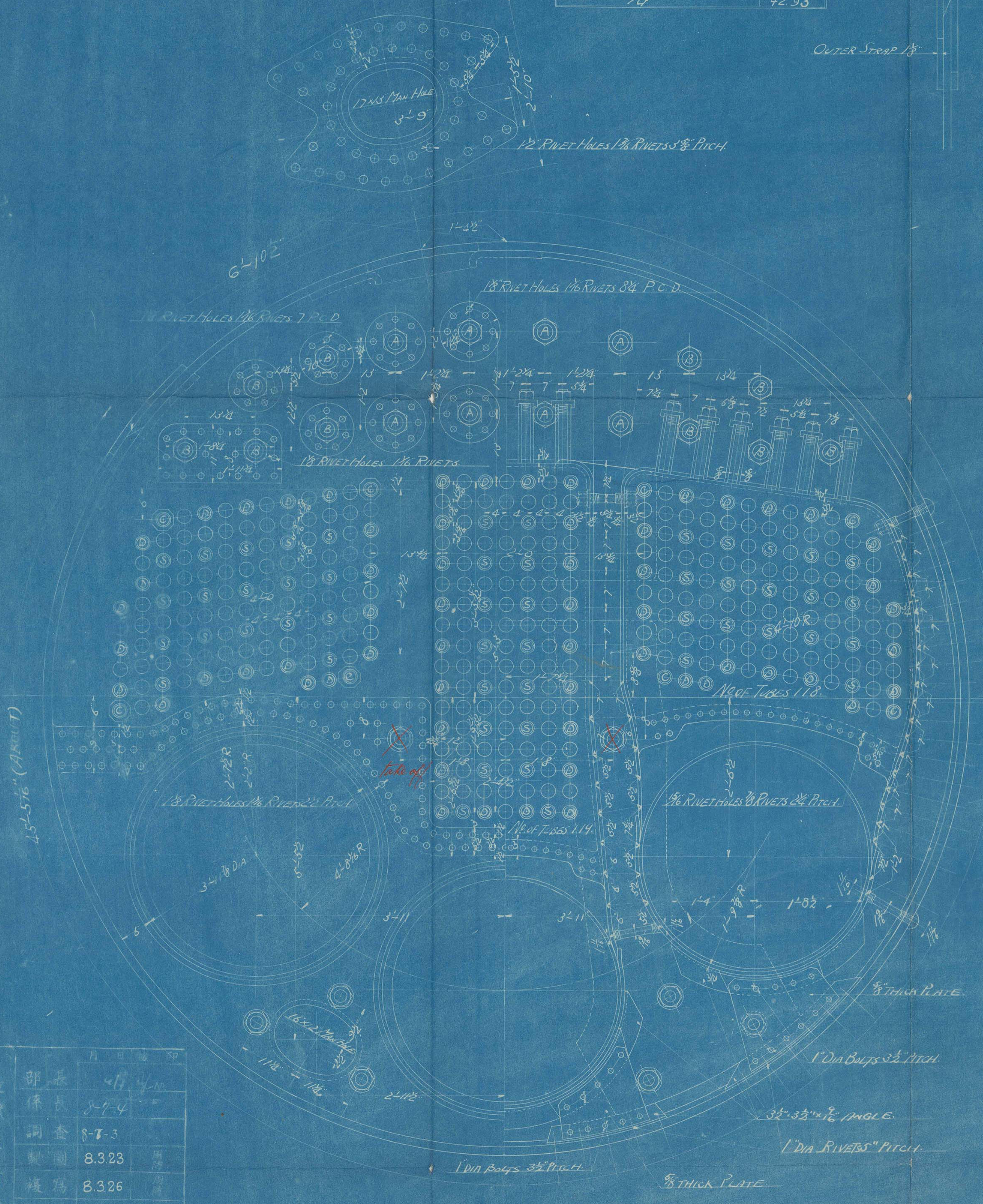


STEEL BOILER FOR *14938*  
W. P. = 200 LBS./sq. in.  
SCALE 1 IN. TO ONE FOOT. FOUR OFF (FOR ONE VESSEL)

PARTICULARS (ONE BOILER)

HEATING SURFACE OF TUBES	2108.14
" " " COMB. C.	245.37
" " " FURNACES	183.81
TOTAL HEATING SURFACE	2507.32
TOTAL GRATE AREA	58.41
W.P.	42.93



進機設計係

部	係	調	製	機	見
8.323	8.323	8.323	8.323	8.323	8.323
8.326	8.326	8.326	8.326	8.326	8.326





10 NICHOLS 1/6 NICHOLS

13" - 6 1/2" - 5 1/2" - 4"

32" x 32" x 1/2" ANGLE

10-11

4-5 1/2" - 7"

# STEEL BOILER

## FOR NO. 938

Honolulu Maru

RLR:

